

Article

The Life of a Painting as Traced by Technical Analysis: Original Materials and Posthumous Alterations in Édouard Manet's *Woman in Striped Dress*

Federica Pozzi ^{1,*}, Silvia A. Centeno ¹, Federico Carò ¹, Gillian McMillan ², Lena Stringari ² and Vivien Greene ³

¹ Department of Scientific Research, The Metropolitan Museum of Art, 1000 Fifth Avenue, New York, NY 10028, USA; silvia.centeno@metmuseum.org (S.A.C.); federico.carò@metmuseum.org (F.C.)

² Conservation Department, Solomon R. Guggenheim Museum, 1071 Fifth Avenue, New York, NY 10128, USA; gmcmillan@guggenheim.org (G.M.); lstringari@guggenheim.org (L.S.)

³ Curatorial Department, Solomon R. Guggenheim Museum, 1071 Fifth Avenue, New York, NY 10128, USA; vgreene@guggenheim.org (V.G.)

* Correspondence: federica.pozzi@centrorestaurovenaria.it (F.P.)

† Current address: Center for Conservation and Restoration of Cultural Heritage "La Venaria Reale", Via XX Settembre 18, 10078 Venaria Reale (Torino), Italy

Citation: Pozzi, F.; Centeno, S.A.; Carò, F.; McMillan, G.; Stringari, L.; Greene, V. The Life of a Painting as Traced by Technical Analysis: Original Materials and Posthumous Alterations in Édouard Manet's *Woman in Striped Dress*. *Coatings* **2021**, *11*, 1314. <https://doi.org/10.3390/coatings11111334>

Academic Editor: Maurizio Licchelli

Received: 23 September 2021

Accepted: 26 October 2021

Published: 30 October 2021

Publisher's Note: MDPI stays neutral with regard to jurisdictional claims in published maps and institutional affiliations.



Copyright: © 2021 by the authors. Licensee MDPI, Basel, Switzerland. This article is an open access article distributed under the terms and conditions of the Creative Commons Attribution (CC BY) license (<http://creativecommons.org/licenses/by/4.0/>).

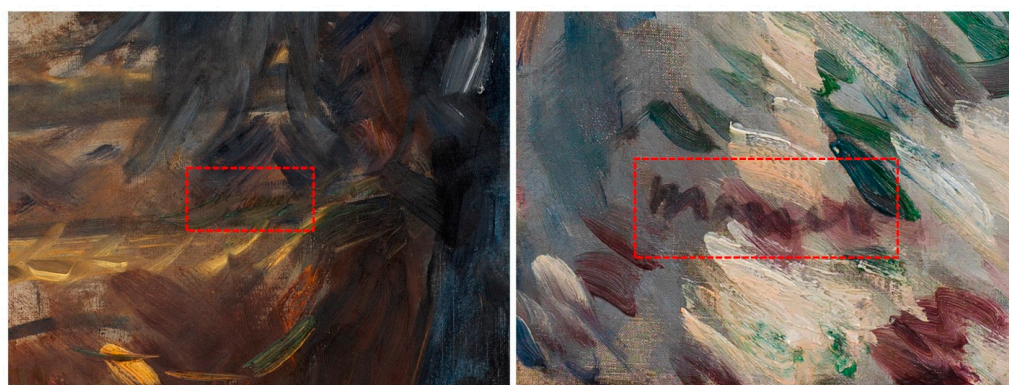


Figure S1. Inscription found on *Woman in Striped Dress* (left) compared to Manet's signature on *Before the Mirror* (right).

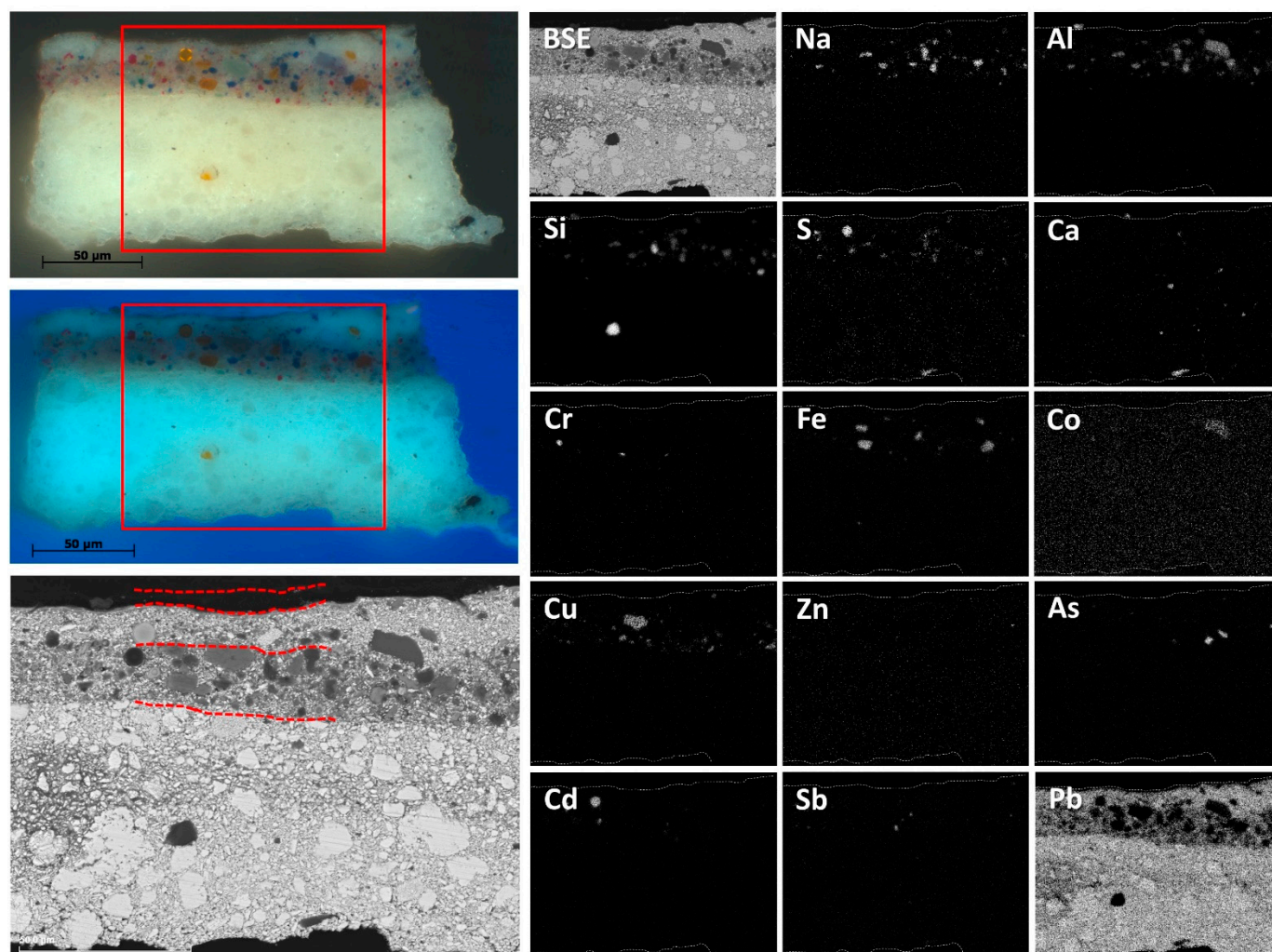


Figure S2. Optical microscopy and SEM/EDS data acquired on cross section S9.

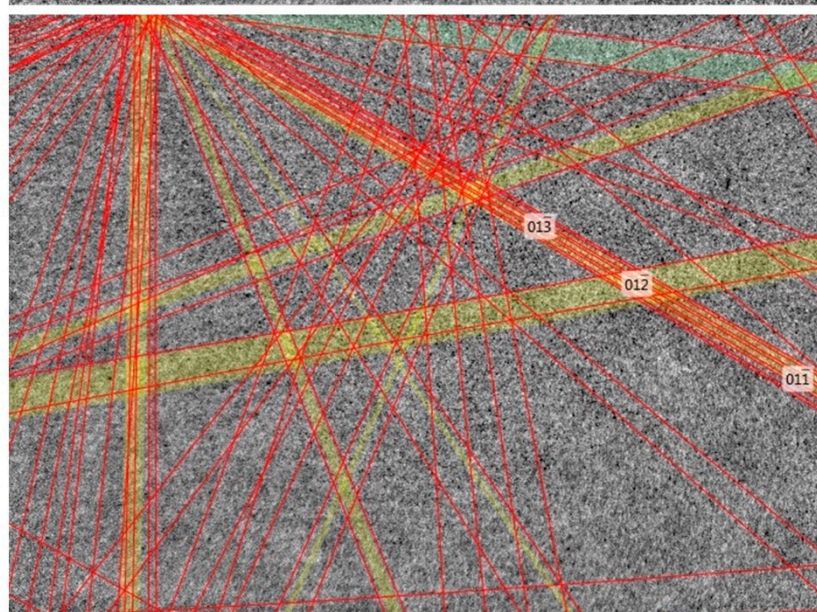
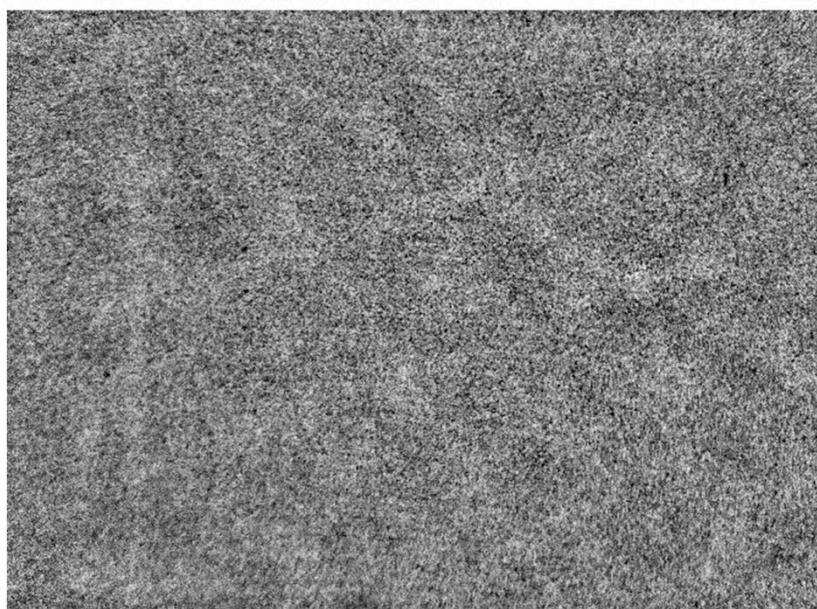
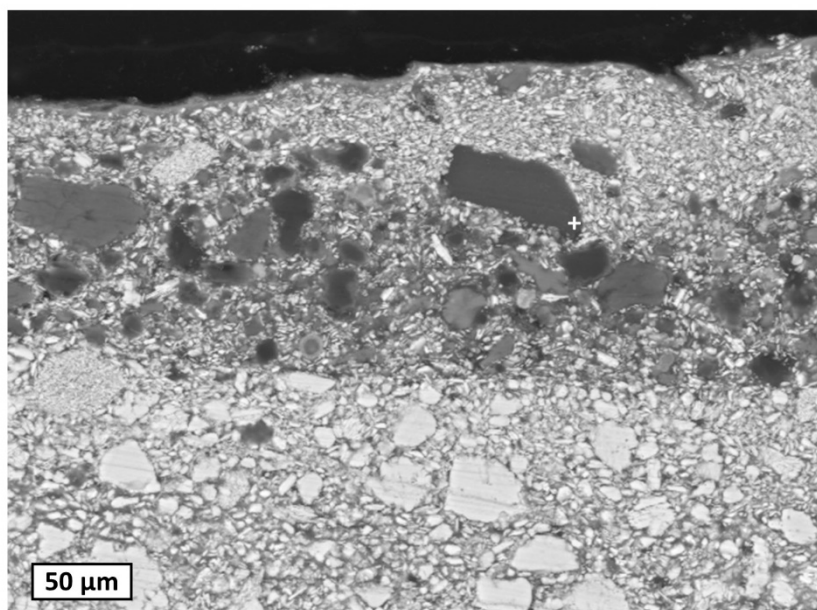


Figure S3. EBSD data acquired on cross section S9.



Figure S4. Areas of the painting where the MA-XRF elemental distribution maps shown in Figures 7 and 8 were acquired.

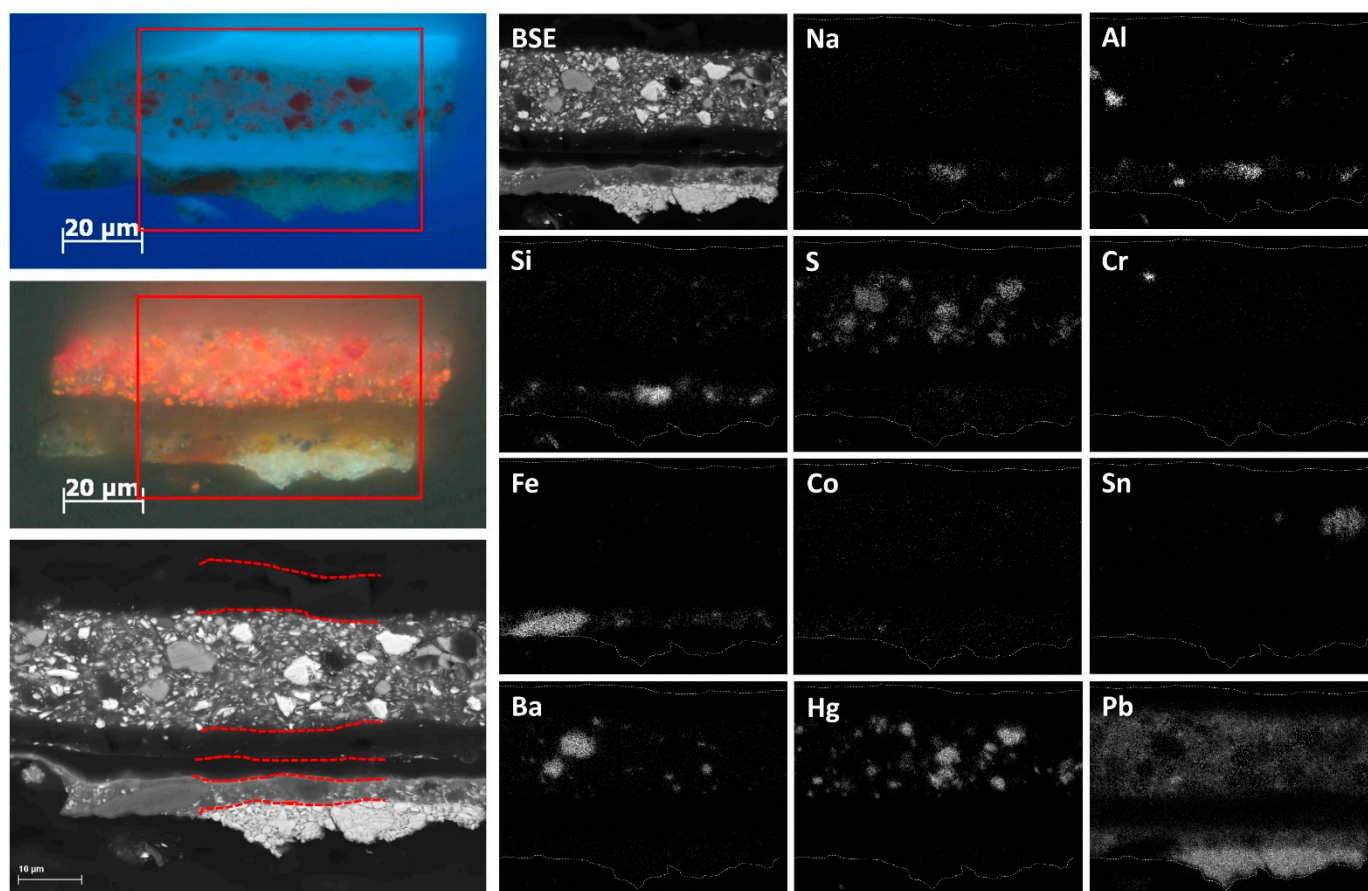


Figure S5. Optical microscopy and SEM/EDS data acquired on cross section S12.

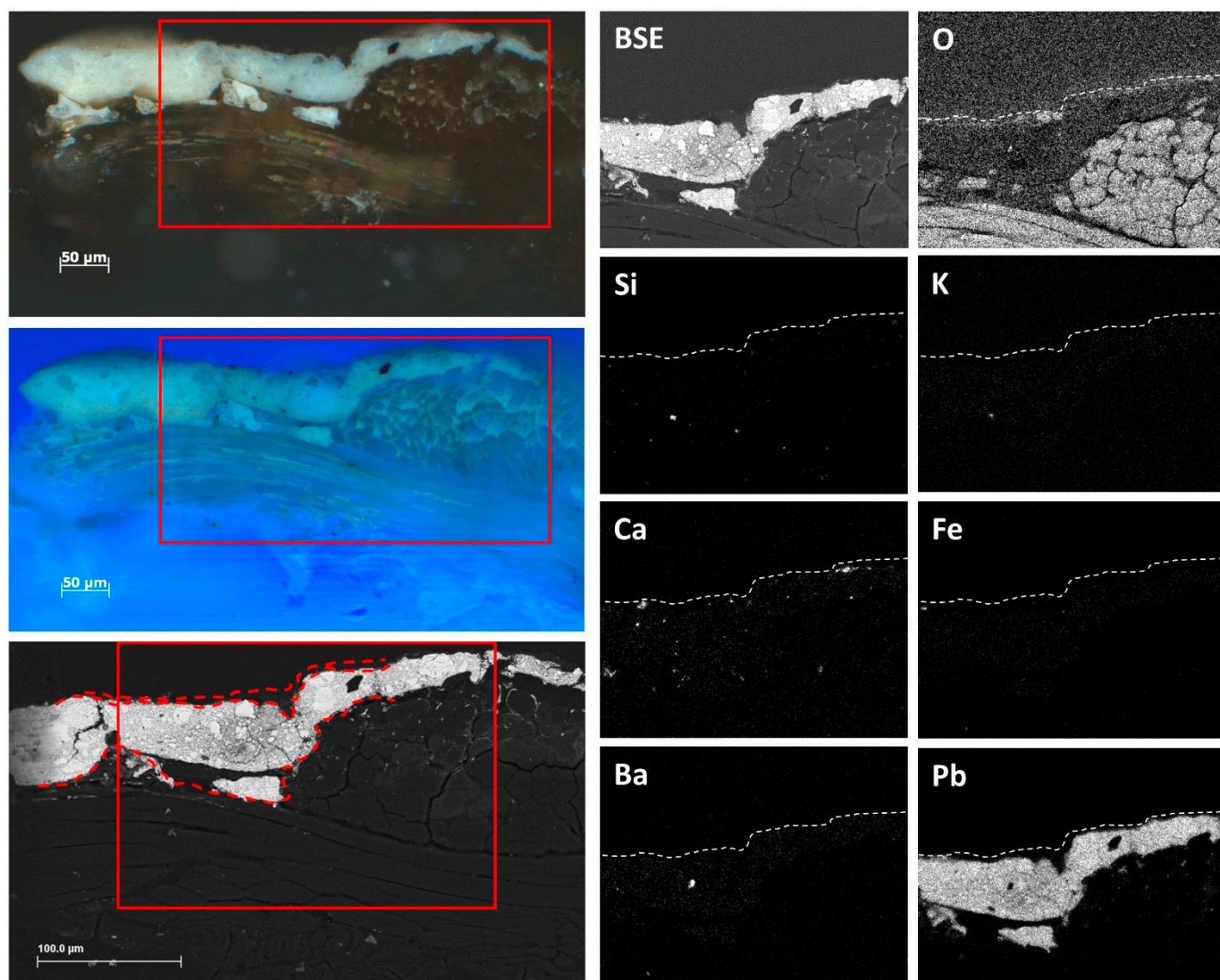


Figure S6. Optical microscopy and SEM/EDS data acquired on cross section S3.