

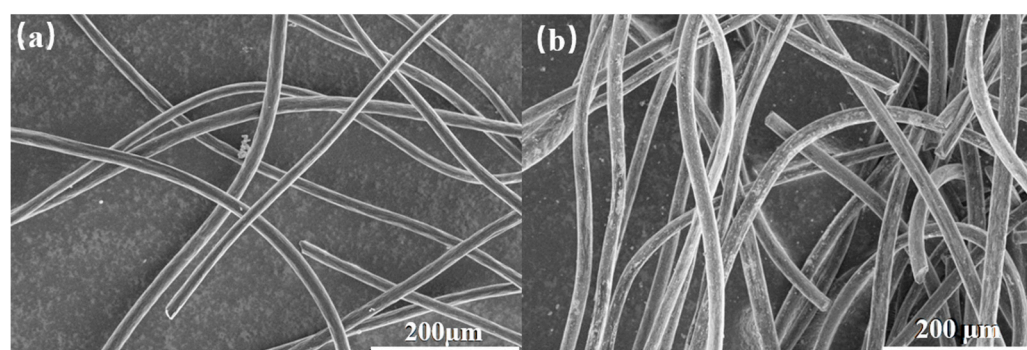
# Supplementary Information: Electrochemical Dechlorination of 3-chlorophenol with Palladium-Loaded Carbon Felt Electrode

Di Li <sup>1,2</sup>, Siqi Zhang <sup>1,2</sup>, Yingjia Chen <sup>1,2</sup>, Haiming Yang <sup>1,2,\*</sup>, Xin Geng <sup>1,2</sup>, Suying Zhao <sup>1,2</sup>, Jiajun Li <sup>1,2</sup> and Lixiang Li <sup>1,2</sup>

<sup>1</sup> School of Chemical Engineering, University of Science and Technology Liaoning, Anshan 114051, China; youxiangli@163.com (D.L.); zhangsq2021347@163.com (S.q.Z.); chenyingjia126@163.com (Y.C.); zhaoshuying912@sina.com (S.Z.); gengxin60@163.com (X. G.); lijiajun0413@sina.com (J.L.); lxli2005@126.com (L.L.)

<sup>2</sup> Key Laboratory of Energy Materials and Electrochemistry Research Liaoning Province, University of Science and Technology Liaoning, Anshan 114051, China

\* Correspondence: yanghaiming80@sina.com



**Figure S1.** SEM of cathode (a) Raw carbon felt electrode, (b) Pd loaded carbon felt electrode (0.5 mg/cm<sup>2</sup>).

**Citation:** Li, D.; Zhang, S.; Chen, Y.; Yang, H.; Geng, X.; Zhao, S.; Li, J.; Li, L. Electrochemical Dechlorination of 3-chlorophenol with Palladium-Loaded Carbon Felt Electrode. *Coatings* **2021**, *11*, 1188. <https://doi.org/10.3390/coatings11101188>

Academic Editor: Eva Pellicer

Received: date: 30 June 2021

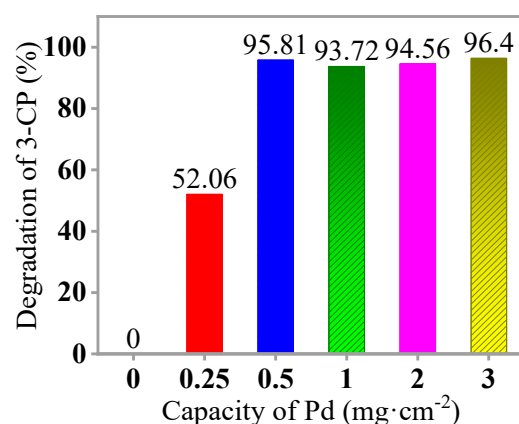
Accepted: date: 14 September 2021

Published: 29 September 2021

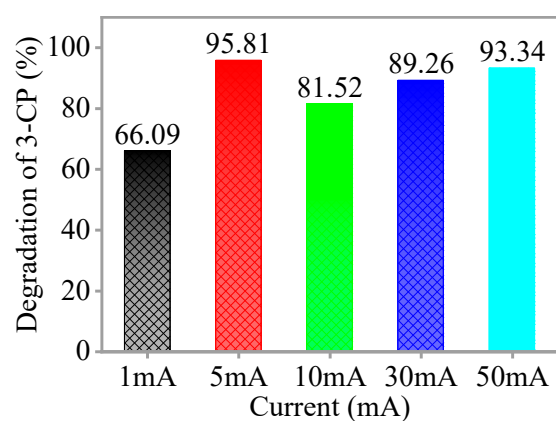
**Publisher's Note:** MDPI stays neutral with regard to jurisdictional claims in published maps and institutional affiliations.



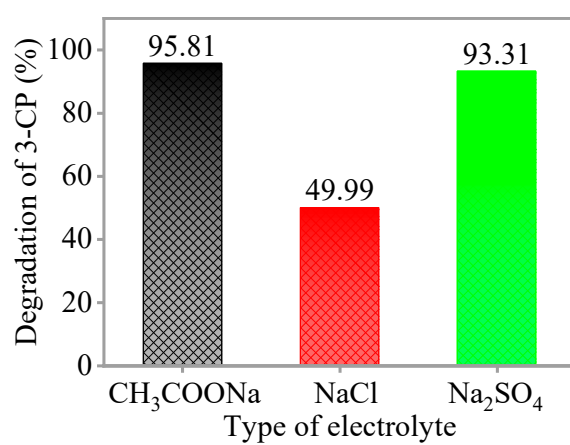
**Copyright:** © 2021 by the authors. Licensee MDPI, Basel, Switzerland. This article is an open access article distributed under the terms and conditions of the Creative Commons Attribution (CC BY) license (<http://creativecommons.org/licenses/by/4.0/>).



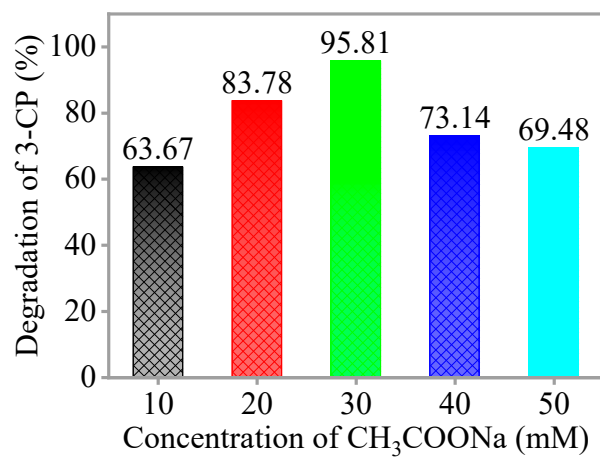
**Figure S2.** Effect of loading amount of Pd on the removal rates of 3-CP.



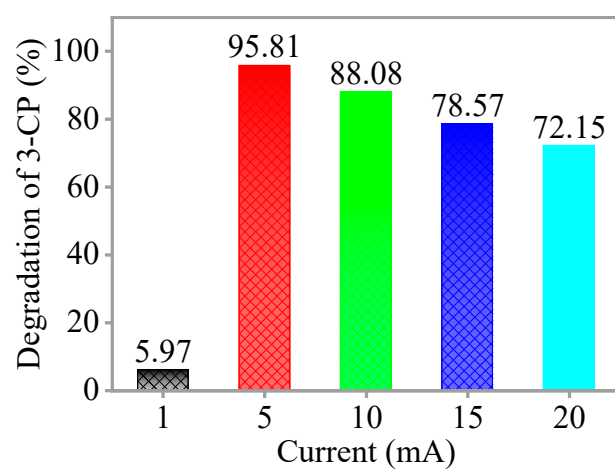
**Figure S3.** Effect of the currents for the preparation electrode on the removal rates of 3-CP.



**Figure S4.** Effect of different electrolytes on the removal rates of 3-CP.



**Figure S5.** Effect of concentrations of CH<sub>3</sub>COONa on the removal rates of 3-CP.



**Figure S6.** Effect of reduction current on The removal rates of 3-CP.