

Supplementary Information

Rapid Screening and Comparison of Chimeric Lysins for Antibacterial Activity against *Staphylococcus aureus* Strains (Supplementary Information)

Jin-Mi Park ^{1,2}, Dae-Sung Ko ^{1,2}, Hee-Soo Kim ^{1,2}, Nam-Hyung Kim ^{1,2}, Eun-Kyoung Kim ³, Young-Hye Roh ³, Danil Kim ³, Jae-Hong Kim ¹, Kang-Seuk Choi ^{2,4,*} and Hyuk-Joon Kwon ^{1,2,*}

¹ Laboratory of Poultry Medicine, College of Veterinary Medicine, Seoul National University, Seoul 08826, Republic of Korea

² Research Institute for Veterinary Science, College of Veterinary Medicine, BK21 for Veterinary Science, Seoul 08826, Republic of Korea

³ Department of Farm Animal Medicine, College of Veterinary Medicine, Seoul National University, Pyeongchang-gu 25354, Republic of Korea

⁴ Laboratory of Avian Diseases, College of Veterinary Medicine, Seoul National University, Seoul 08826, Republic of Korea

* Correspondence: kchoi0608@snu.ac.kr (K.-S.C.); kwonhj01@snu.ac.kr (H.-J.K.); Tel.: +82-2-880-1266 (K.-S.C. & H.-J.K.)

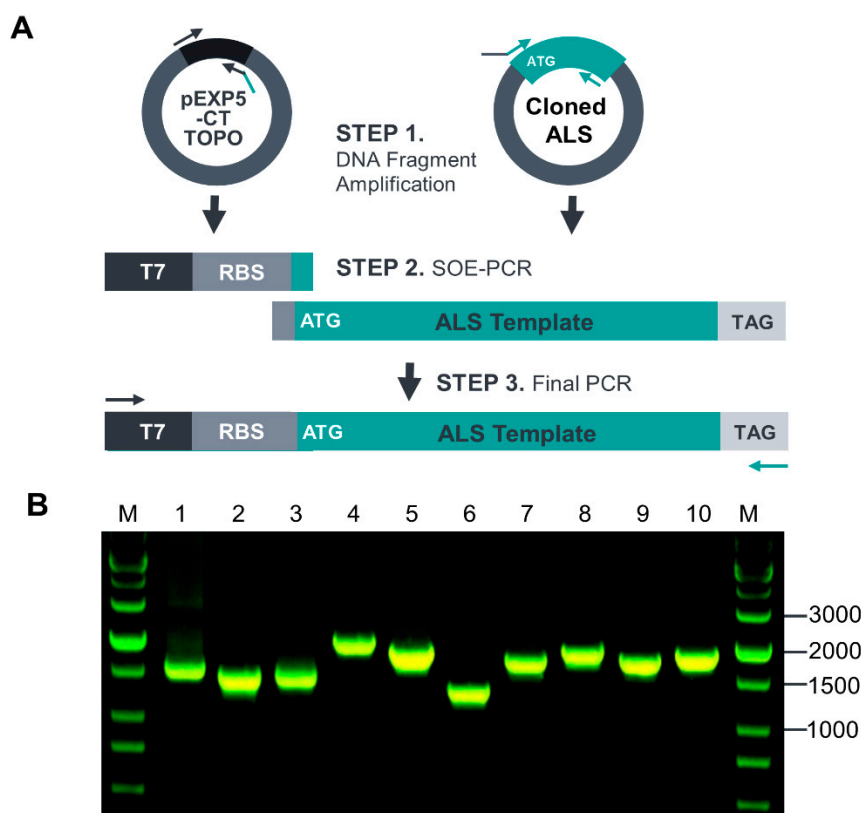


Figure S1. Preparation of chimeric lysin DNA template for cell-free expression system by PCR and SOE-PCR. (A) Schematic presentation of SOE-PCR for DNA template preparation and (B) Agarose gel electrophoresis of high-concentration purified DNA template for cell-free expression. Samples (about 400-600 ng/ μ l) were loaded with 1 μ l each on 1.3% agarose gel. Lane M, 1000 bp size marker; Lane 1, ALS1 (437ng), 1576bp; Lane 2, ALS2 (548ng), 1429bp; Lane 3, ALS3 (423ng), 1435bp; Lane 4,

ALS4 (483ng), 2032bp; Lane 5, ALS7 (600ng), 1858bp; Lane 6, ALS6 (403ng), 1330bp; Lane 7, ALS7 (420ng), 1671bp; Lane 8, ALS8 (417ng), 1936bp; Lane 9, ALS9 (514ng), 1783bp; Lane 10, ALS10 (518ng), 1879bp.

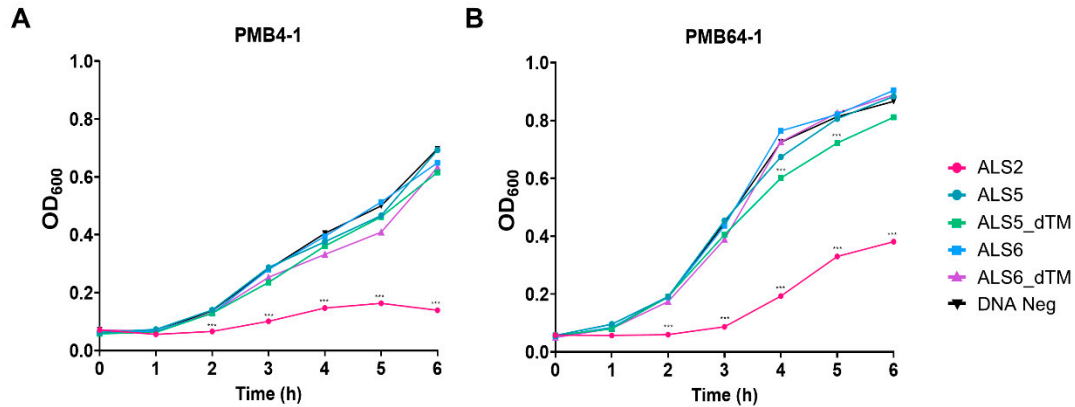


Figure S2. Effect of transmembrane peptides on antibacterial activity of ALS5 and ALS6. Antibacterial activity of parents (ALS5 and ALS6) and mutants (ALS5-dTM and ALS6-dTM) without transmembrane peptides were prepared using cell-free expression system and antibacterial activity was tested using turbidity reduction test. Antibacterial activity of chimeric lysins to *S. aureus* strains (A) PMB4-1 and (B) PMB64-1. ALS2 and cell free expression reaction without DNA were used as positive and negative controls. Single experiment was performed in triplicate samples. Data were analyzed by one-way ANOVA followed by Dunnett's test to determine the significance relative to the negative control. ($p^{***} < 0.001$, $p^{**} < 0.01$, $p^* < 0.05$).

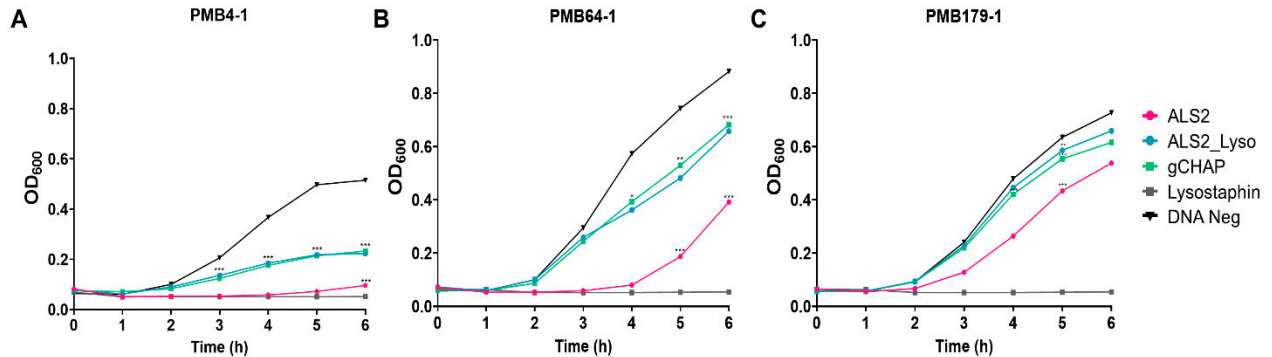


Figure S3. Comparison of antibacterial activities of ALS2, ALS2_Lyso and gCHAP. Antibacterial activity of chimeric lysins to *S. aureus* strains (A) PMB4-1, (B) PMB64-1 and (C) PMB179-1. Lysostaphin and cell free expression reaction without DNA were used as positive and negative controls. Single experiment was performed in triplicate samples. Data were analyzed by one-way ANOVA followed by Dunnett's test to determine the significance relative to the negative control. ($p^{***} < 0.001$, $p^{**} < 0.01$, $p^* < 0.05$).

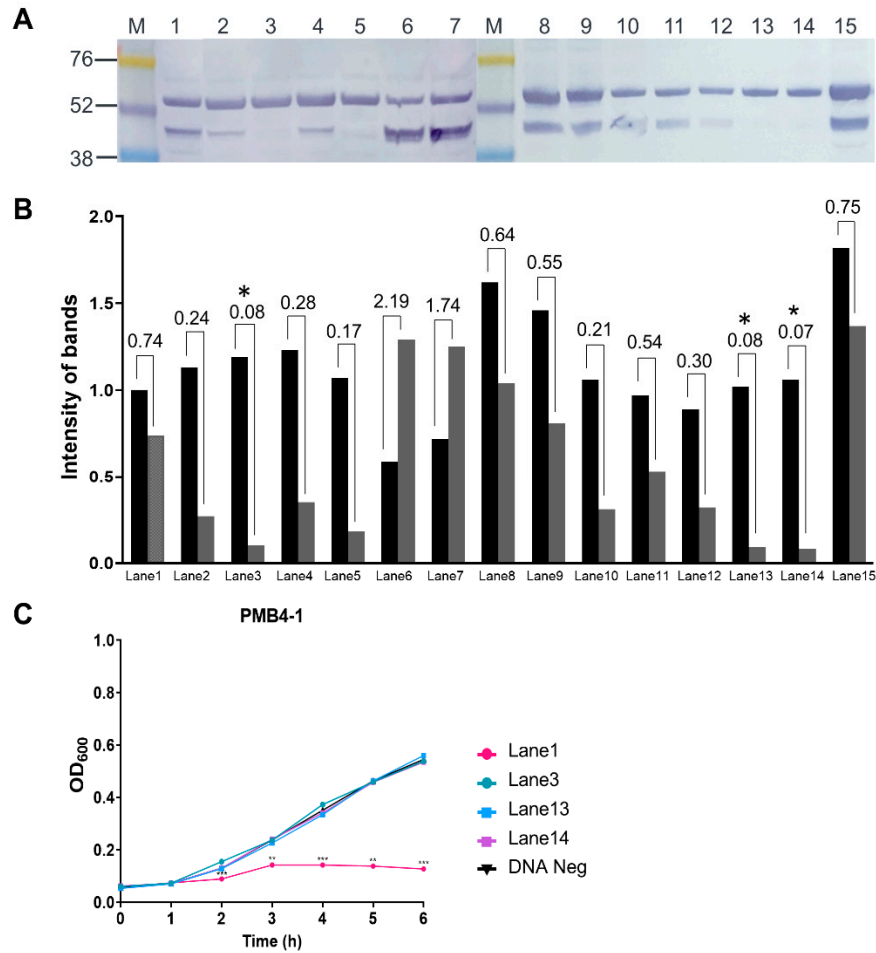


Figure S4. Effects of 89th methionine mutations on expression of the subprotein and antibacterial activity. (A) Western analysis in ALS2 89th amino acid (methionine) mutation. Lane M: protein molecular weight marker (Amersham™ ECL™ Rainbow™ Marker, Lane 1: ALS2 ; Lane 2: ATC (Ile) mutagenesis ; Lane 3: CTG (Leu) mutagenesis ; Lane 4: TTG (Leu) mutagenesis ; Lane 5: GTG (Val) mutagenesis ; Lane 6: ATT (Ile) mutagenesis ; Lane 7: ATA (Ile) mutagenesis ; Lane 8: TGT (Cys) mutagenesis ; Lane 9: TGC (Cys) mutagenesis ; Lane 10: ACT (Thr) mutagenesis ; Lane 11: ACC (Thr) mutagenesis ; Lane 12: ACA (Thr) mutagenesis ; Lane 13: ACG (Thr) mutagenesis ; Lane 14: GGG (Gly) mutagenesis ; Lane 15: GGC (Gly) mutagenesis. (B) The relative protein intensity of ALS2 protein and subprotein according to mutagenesis. Protein expression ratio was presented using Image J compared to ALS2 (52.4kDa). (C) Antibacterial activity of CTG (Leu), ACG (Thr), GGG (Gly) mutants were compared with parent ALS2. Cell free expression reaction without DNA was used as negative controls. Single experiment was performed in triplicate samples. Data were analyzed by one-way ANOVA followed by Dunnett's test to determine the significance relative to the negative control. ($p^{***} < 0.001$, $p^{**} < 0.01$, $p^* < 0.05$).

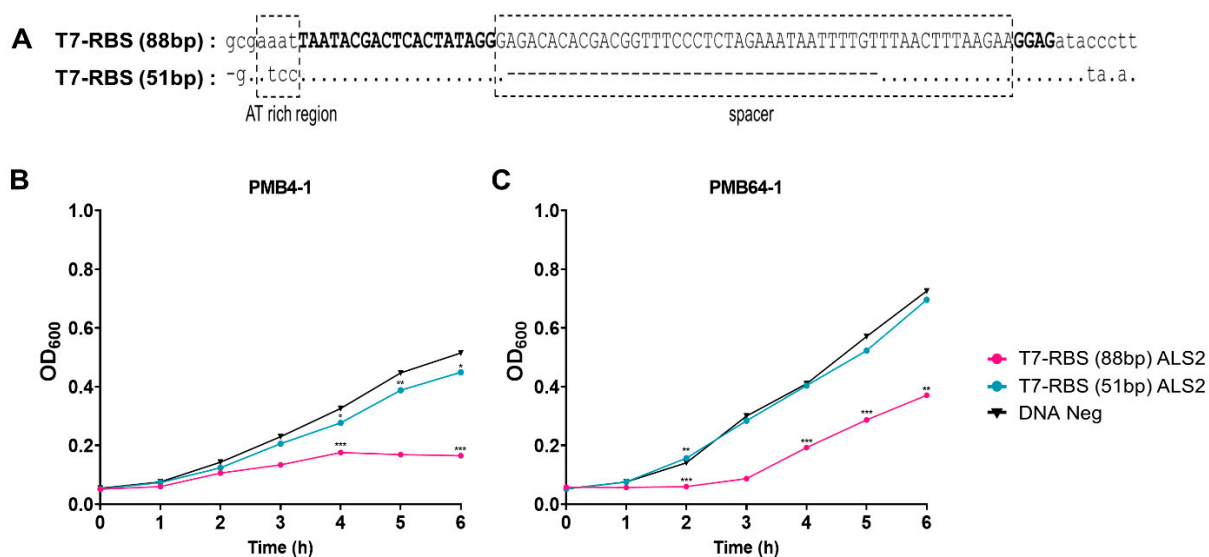


Figure S5. Comparison of the present and previous cell-free expression systems. (A) Structure of the present (88bp) and the previous (51bp) T7 promoter and ribosome-binding site (RBS). AT-rich and spacer regions are boxed in broken line and T7 promoter and RBS sequences are in bold. Comparison of antibacterial activities of ALS2 prepared by the present and previous methods in *S. aureus* strains (B) PMB4-1 and (C) PMB64-1. Cell free expression reaction without DNA was used as negative controls. Single experiment was performed in triplicate samples. Data were analyzed by one-way ANOVA followed by Dunnett's test to determine the significance relative to the negative control. ($p^{***} < 0.001$, $p^{**} < 0.01$, $p^* < 0.05$).

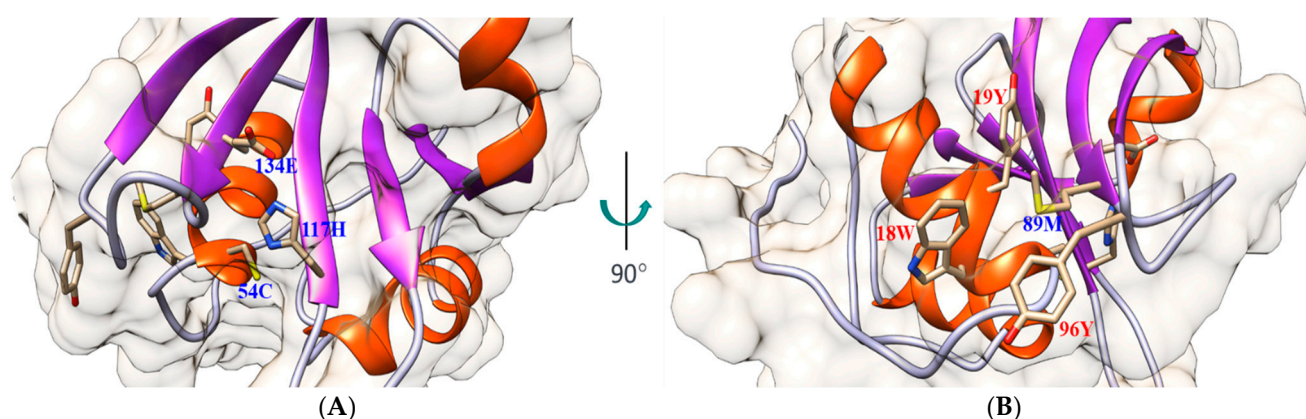


Figure S6. Locations of catalytic triad and 89M side chain in the 3D structure of gCHAP (AF-A0A6B5FVD2-F1-model_v3). (A) Location of catalytic triad (54C, 117H, and 134E). (B) Location of 89M side chain and interaction with neighboring side chains of 18W, 19Y and 96Y.

Table S1. Proteins and domains used for chimeric lysin construction.

Abbreviated name	Genbank Protein Full name	Genbank accession No.	Amino acid Region	Amino acid Length
ØK	LysK	AFN38929	1-495	495
gCHAP	Secretory antigen SsaA-like protein	ABD29804	152-265 (Surface antigen)	114
gAmi	Autolysin	CYF13637	257-385 (Ami_2 domain)	129
LytM	glycine-glycine endopeptidase LytM	WP_000736798	1-316	316
LytH	Cell wall amidase lyth	QBX59665	1-291	291
LytD	N-acetylglucosaminidase	WP_000739230	1-258	258
SsaA	Secretory antigen SsaA-like protein	ABD29804	1-265	265
Lysostaphin ^a	lysostaphin (ttg start codon)	AAA26655.1	144-389	246

^a used as a positive sample in the screening test.**Table S2.** PCR primers used for amplification of lysin, autolysin and lysostaphin

Amplified gene	Primer name	Sequence (5' -3')	Usage
LysK	phiK CHAP-F	ATGGCAAAGACTCAGGCAGA	ALS1,3 amplification
	phiK CHAP-R	TTCCTTCTTAACAGTAGTACC	ALS3 amplification
	phiK Ami-F	GCAGGTACTACTGTGAAGAAGG	ALS2,4,5,10 amplification
	phiK SH3-F	GGTACTTCTTCTTCTACTGTC	ALS3 amplification
	phiKL-R	TTTGAAAACACCCCATGCAAC	ALS1,2,3,4,5,10 & 5-dTM amplification
LysM peptidoglycan-binding domain-containing protein	gCHAP-F	atgGCATCATCTTTAATCACCAA	ALS2 amplification
	gCHAP-R	ATGGATGAATGCATAGCTAGA	ALS2,6,9,10 & 6-dTM amplification
Autolysin (AtIE)	gAmi2-F	CCTAAATACGCATACCGTAAC	ALS3 amplification
	gAmi2-R	GTCATATAATTGATCATAACT	ALS3 amplification
Glycine-glycine endopeptidase LytM	LytM-F	ATGAAAAAATTAACAGCAGCAGC	ALS4,8 amplification
	LytM-R	TCTACTTTGCAAGTATGACGTTGG	ALS4,8 amplification
Cell wall amidase lyth	LytH-F	ATGAAAAAATAGAGGCATGGTT	ALS6,7,8,9 amplification
	LytH-R	CGCAGAAAAATAAATTTTAAG	ALS6,7,8,9 amplification
N-acetylglucosaminidase	LytD-F	ATGAAGAAGAATTTCAAGTTACG	ALS5,7 amplification
	LytD-R	TTTATAATATGTTTGTCTAAT	ALS5,7 amplification
Secretory antigen SsaA-like protein	SsaA-F	aTGAAAAAATTAGCATTTGCAATA	ALS9,10 amplification

Lysostaphin (ttg start codon)	Lyso-F	atgGCGGCAACGCATGAACAC	Lysostaphin amplification
	Lyso-R	TTTGATAGTACCCACAGAAC	Lysostaphin amplification

small case letters indicate nucleotides added artificially.

Underlined letters indicate the sequence of T7 and RBS fragments.

Table S3. PCR primers used for amplification of DNA templates for cell free expression

Primer name	Sequence (5' -3')	Usage
T7-F	GCGAAATTAATACGACTCACTATAG	T7 amplification PCR for all
T7-R	AAGGGTATCTCCTTCTTAAAGTTAAAC	T7 amplification
phiKL-TAG-R	ctaTTTGAAAACACCCCATGCAAC	ALS1,2,3,4,5,10 & 5-dTM amplification
gCHAP-TAG-R	ctaATGGATGAATGCATAGCTAGA	ALS6 & 6-dTM amplification
LytD-TAG-R	ctaTTTATAATATGTTTGTCTAAT	ALS7 amplification
LytM-TAG-R	ctaTCTACTTTGCAAGTATGACGTTGG	ALS8 amplification
LytH-TAG-R	ctaCGCAGAAAAATAAATTTTAAG	ALS9 amplification
Lyso-TAG-R	ctaTTTGATAGTACCCACAGAAC	Lysostaphin amplification
T7-phiKCHAP-F	<u>CTTTAAGAAGGAGATACCCTT</u> ATGGCAA- GACTCAGGCAG	SOE-PCR for ALS1, ALS3
T7-phiKCHAP-R	CTGCCTGAGTCTTTGCCATA <u>AAGG-</u> <u>TATCTCCTTCTTAAAG</u>	SOE-PCR for ALS1, ALS3
T7-gCHAP-F	<u>CTTTAAGAAGGAGATACCCTT</u> ATGG- CATCATCTTTTAATCAC	SOE-PCR for ALS2
T7-gCHAP-R	GTGATTAAAAGATGATGCCATA <u>AAGG-</u> <u>TATCTCCTTCTTAAAG</u>	SOE-PCR for ALS2
T7-LytM-F	<u>CTTTAAGAAGGAGA-</u> <u>TACCCTT</u> ATGAAAAAATTAACAGCAGC	SOE-PCR for ALS4
T7-LytM-R	GCTGCTGTTAATTTTTTCATA <u>AAGG-</u> <u>TATCTCCTTCTTAAAG</u>	SOE-PCR for ALS4
T7-LytD-F	<u>CTTTAAGAAGGAGATACCCTT</u> ATGAAGAA- GAATTCAAGTTAC	SOE-PCR for ALS5
T7-LytD-R	GTAACCTTGAAATTTCTTTCATA <u>AAGG-</u> <u>TATCTCCTTCTTAAAG</u>	SOE-PCR for ALS5
T7-LytH-F	<u>CTTTAAGAAGGAGA-</u> <u>TACCCTT</u> ATGAAAAAATAGAGGCATG	SOE-PCR for ALS6,7,8
T7-LytH-R	CATGCCTCTATTTTTTCATA <u>AAGG-</u> <u>TATCTCCTTCTTAAAG</u>	SOE-PCR for ALS6,7,8
T7-SsaA-F	<u>CTTTAAGAAGGAGA-</u> <u>TACCCTT</u> ATGAAAAAATTAGCATTTGC	SOE-PCR for ALS9,10
T7-SsaA-R	GCAAATGCTAATTTTTTCATA <u>AAGG-</u> <u>TATCTCCTTCTTAAAG</u>	SOE-PCR for ALS9,10
T7-Lyso-F	<u>CTTTAAGAAGGAGATACCCTT</u> ATGGCGG- CAACGCATGAAC	SOE-PCR for Lysostaphin
T7-Lyso-R	GTCATGCGTTGCCGCCATA <u>AAGG-</u> <u>TATCTCCTTCTTAAAG</u>	SOE-PCR for Lysostaphin

small case letters indicate nucleotides added artificially.

Underlined letters indicate the sequence of T7 and RBS fragments.

Table S4. PCR primers used for ALS2 mutagenesis.

Primer name	Location	Modified sequence (5'-3')	Usage
GAT81GAC-F	229-255	CGTGTCATGGTGACGGTAGTATCTTG	TS-10 mutation
GAT81GAC-R	229-255	CAAGATACTACCGTCACCATGACACG	TS-10 mutation
GCT73GCC-F	203-234	CATATGGTCATGTTGCCTACGTTGAACGTGTC	TS-34 mutation
GCT73GCC-R	203-234	GACACGTTCAACGTAGGCAACATGACCATATG	TS-34 mutation
TAT74TAC-F	208-238	GGTCATGTTGCCTACGTTGAACGTGTCAATG	TS-31 mutation
TAT74TAC-R	208-238	CATTGACACGTTCAACGTAGGCAACATGACC	TS-31 mutation
GAA88TAA-F	245-277	GTAGTATCTTGATTCTTAAATGAATTACACAT	STOP mutation
GAA88TAA-R	245-277	ATGTGTAATTCATTTAAGAAATCAAGATACTAC	STOP mutation

Table S5. PCR primers used for transmembrane region deletion.

Primer name	Sequence (5' -3')	Usage
ALS5-dTM_F	atgGTGAATGAACTAAATTGTTTAAAAAT	ALS5-dTM amplification
ALS6-dTM_F	atgAATAGCAATAGTGAAGATAGTGGAAC	ALS6-dTM amplification
T7-ALS5-dTM_F	<u>CTTTAAGAAGGAGA-</u> <u>TACCCTTATGGTGAATGAACTAAATT-</u> GTTTAAAAAT	SOE-PCR for ALS5-dTM
T7-ALS6-dTM_F	<u>CTTTAAGAAGGAGATACCCTTATGAA-</u> TAGCAATAGTGAAGATAGTGGAAC	SOE-PCR for ALS6-dTM

Table S6. PCR primers used for mutagenesis of ALS2 89 th amino acid (methionine).

Primer name	Modified sequence (5'-3')	Amino acid change
gCHAP-ATG89ATC-F	CTTGATTCTGAAAT <u>C</u> AATTACACATATGGTCC	Isoleucine
gCHAP-ATG89ATC-R	GGACCATATGTGTAATT <u>G</u> ATTTTCAGAAATCAAG	Isoleucine
gCHAP-ATG89CTG-F	GTATCTTGATTCTGAA <u>C</u> TGAATTACACATATGGTCC	leucine
gCHAP-ATG89CTG-R	GGACCATATGTGTAATTCAG <u>T</u> TCAGAAATCAAGATAC	leucine
gCHAP-ATG89TTG-F	GTATCTTGATTCTGAA <u>T</u> TGAATTACACATATGGTC	leucine
gCHAP-ATG89TTG-R	GACCATATGTGTAATTCA <u>A</u> TTTCAGAAATCAAGATAC	leucine
gCHAP-ATG89GTG-F	GTATCTTGATTCTGAA <u>G</u> TGAATTACACATATGGTC	valine
gCHAP-ATG89GTG-R	GACCATATGTGTAATTCAC <u>T</u> TCAGAAATCAAGATAC	valine
gCHAP-ATG89ATT-F	CTTGATTCTGAAAT <u>I</u> AATTACACATATGGTCC	Isoleucine
gCHAP-ATG89ATT-R	GGACCATATGTGTAATT <u>A</u> ATTTTCAGAAATCAAG	Isoleucine
gCHAP-ATG89ATA-F	CTTGATTCTGAAAT <u>A</u> AATTACACATATGGTCC	Isoleucine
gCHAP-ATG89ATA-R	GGACCATATGTGTAATT <u>I</u> ATTTTCAGAAATCAAG	Isoleucine
gCHAP-ATG89TGT-F	GTATCTTGATTCTGAA <u>I</u> GTAATTACACATATGGTCC	cysteine
gCHAP-ATG89TGT-R	GGACCATATGTGTAATTAC <u>A</u> TTTCAGAAATCAAGATAC	cysteine
gCHAP-ATG89TGC-F	GTATCTTGATTCTGAA <u>I</u> GCAATTACACATATGGTCC	cysteine
gCHAP-ATG89TGC-R	GGACCATATGTGTAATTG <u>C</u> ATTTCAGAAATCAAGATA	cysteine
gCHAP-ATG89ACT-F	GTATCTTGATTCTGAA <u>A</u> CTAATTACACATATGGTCC	threonine
gCHAP-ATG89ACT-R	GGACCATATGTGTAATTAG <u>T</u> TTTCAGAAATCAAGATAC	threonine

gCHAP-ATG89ACC-F	GTATCTTGATTTCTGAAAC <u>C</u> AATTACACATATGGTCC	threonine
gCHAP-ATG89ACC-R	GGACCATATGTGTAATT <u>G</u> GTTTCAGAAATCAAGATAC	threonine
gCHAP-ATG89ACA-F	GTATCTTGATTTCTGAAAC <u>A</u> AATTACACATATGGTCC	threonine
gCHAP-ATG89ACA-R	GGACCATATGTGTAATT <u>T</u> GTTTCAGAAATCAAGATAC	threonine
gCHAP-ATG89ACG-F	GTATCTTGATTTCTGAAAC <u>G</u> AATTACACATATGGTCC	threonine
gCHAP-ATG89ACG-R	GGACCATATGTGTAATT <u>C</u> GTTTCAGAAATCAAGATAC	threonine
gCHAP-ATG89GGG-F	GTATCTTGATTTCTGAAG <u>G</u> GGAATTACACATATGGTCC	glycine
gCHAP-ATG89GGG-R	GGACCATATGTGTAATT <u>C</u> CCTTCAGAAATCAAGATAC	glycine
gCHAP-ATG89GGC-F	GTATCTTGATTTCTGAAG <u>G</u> C AATTACACATATGGTCC	glycine
gCHAP-ATG89GGC-R	GGACCATATGTGTAATT <u>G</u> CCTTCAGAAATCAAGATAC	glycine

Underlined letters indicate nucleotides modified by mutagenesis.