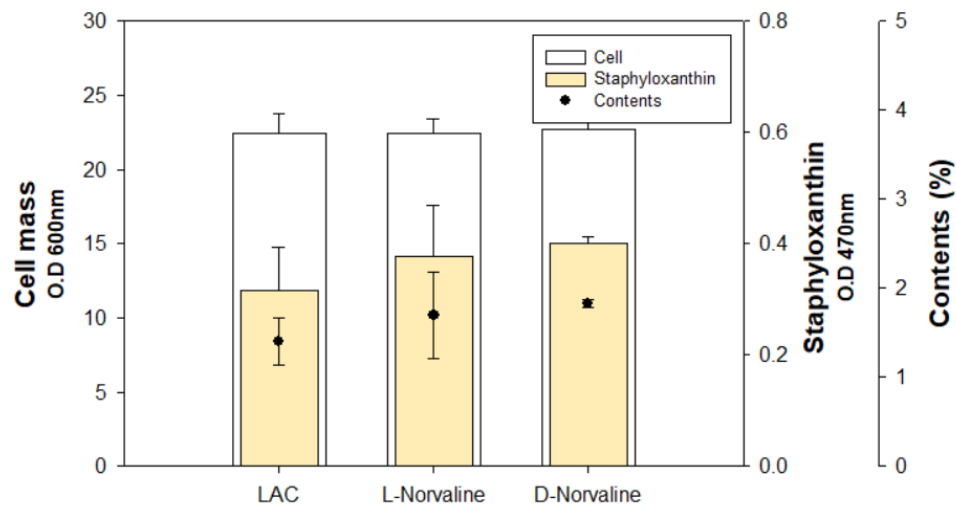
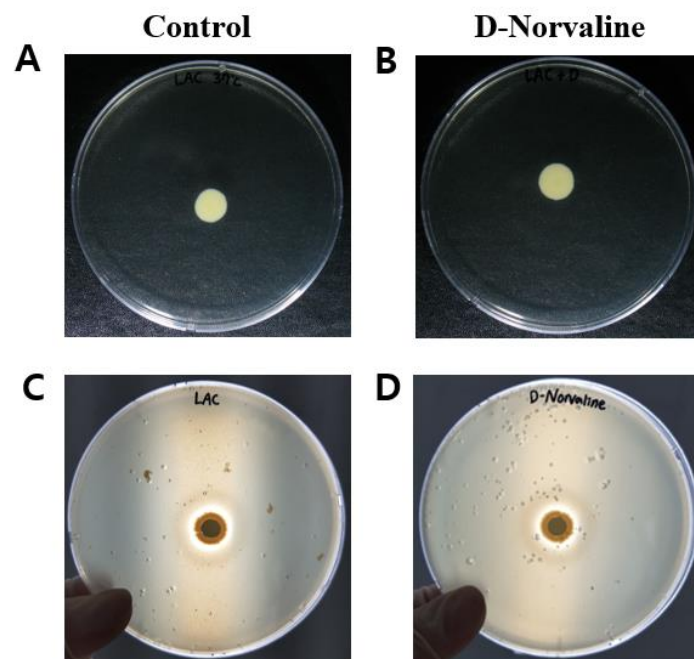


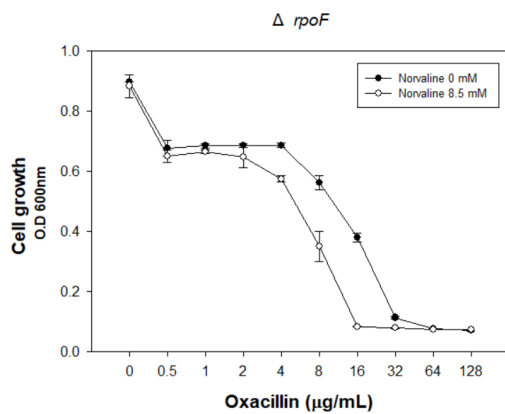
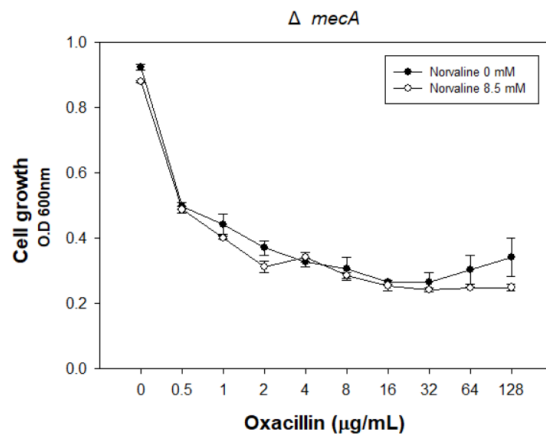
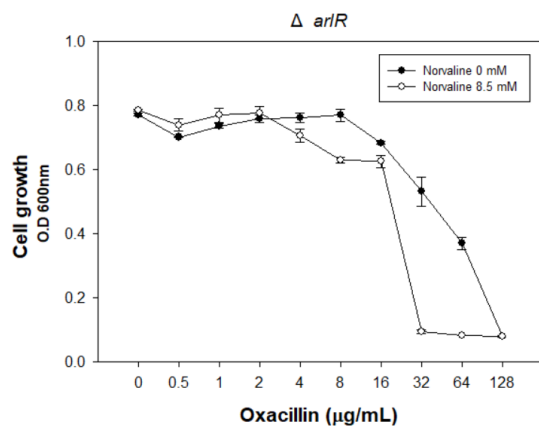
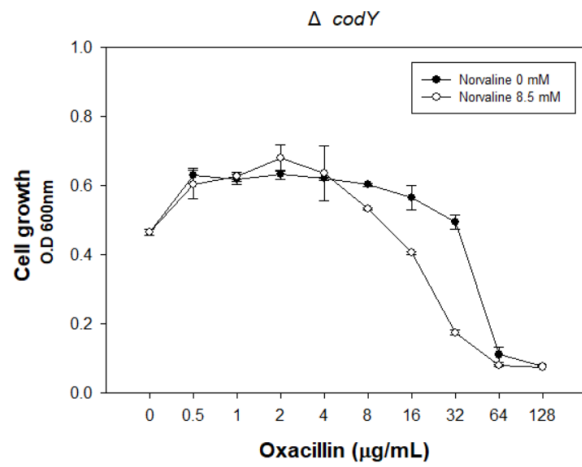
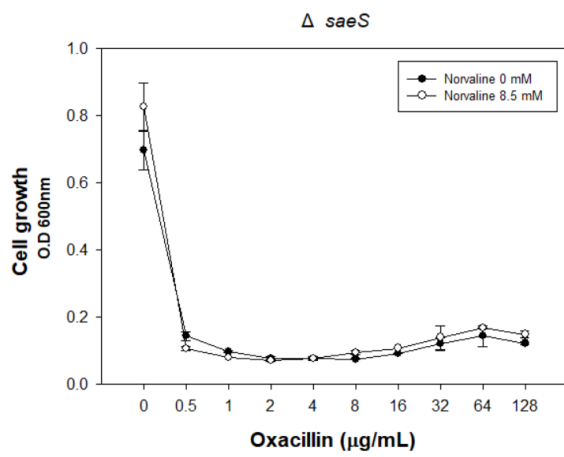
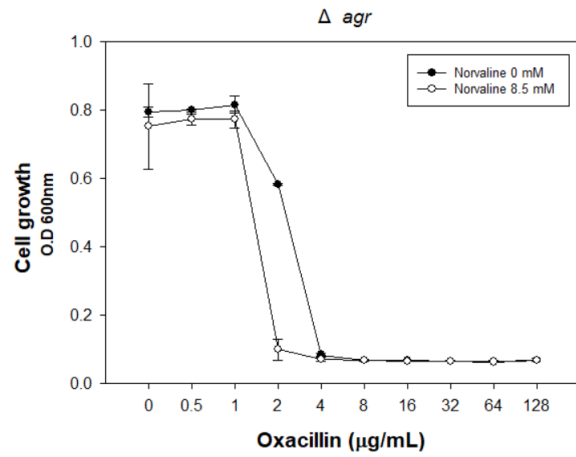
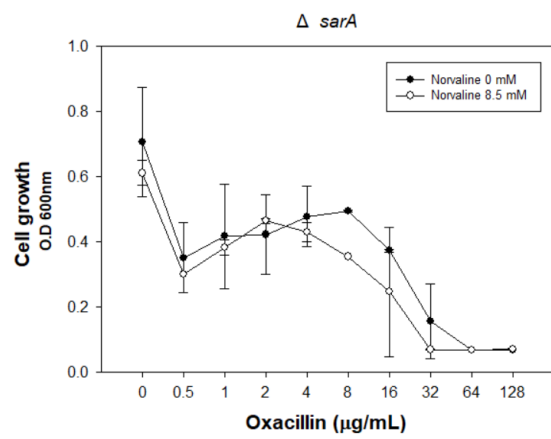
Supplementary data



Supplementary Figure S1. Staphyloxanthin production in LAC and L- / D- Norvaline treated LAC.



Supplementary Figure S2. Plate-based assay. (A) Motility of LAC. (B) Motility of LAC with D-Norvaline. (C) Protease activity in LAC. (D) Protease activity in LAC with D-Norvaline.



Supplementary Figure S3. Cell growth of MRSA deletion mutants ($\Delta sarA$, Δagr , $\Delta saeS$, $\Delta codY$, $\Delta arlR$, $\Delta mecA$, and $\Delta rpoF$) with and without D-norvaline treatment.