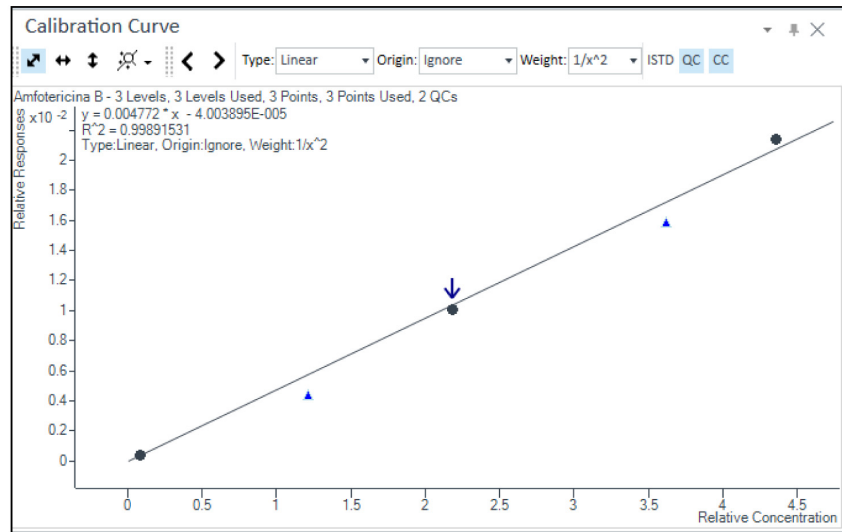
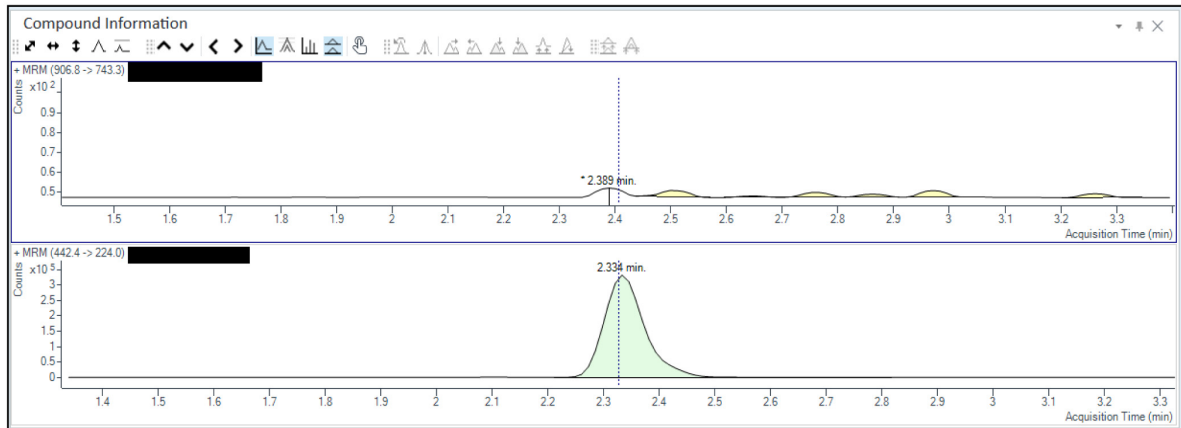
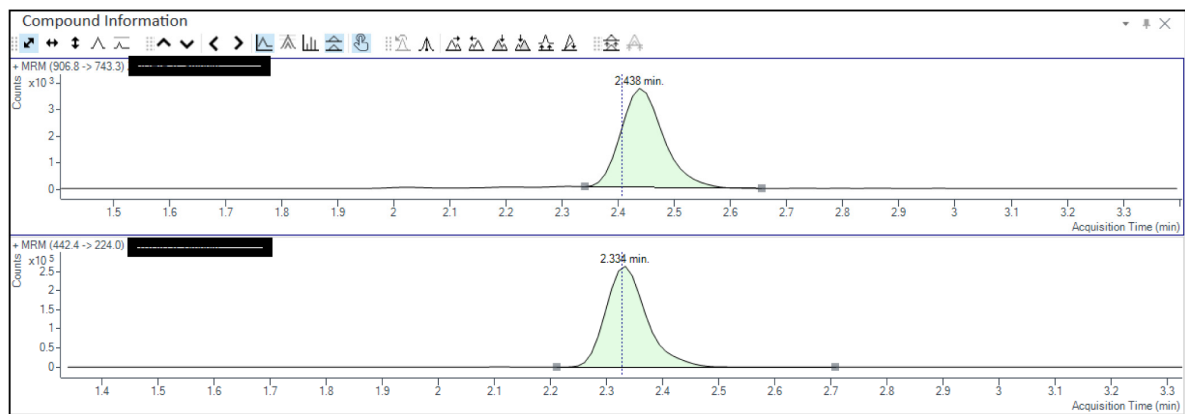


A**B****C**

Supplementary Figure S1. Selectivity and specificity for amphotericin-B in plasma determined by LC-MS/MS. **(A)** Calibration curve for amphotericin-B. Black dots indicate calibrators, purple arrow indicates calibrator 2 (2.36 $\mu\text{g/mL}$) whilst blue triangles represent Low and High QCs. **(B)** Representative chromatogram of plasma sample from a patient treated with Isavuconazole but not amphotericin-B is

reported in the upper layer meanwhile lower layer shows the same samples spiked with an isotopically labeled internal standard (IS). (C) Upper layer shows a representative chromatogram of plasma sample from one patient treated with liposomal amphotericin-B and spiked with IS (lower layer). Black rectangular has been used to hide patients' identity. Retention times for amphotericin-B and IS are 2.438 and 2.334, respectively.