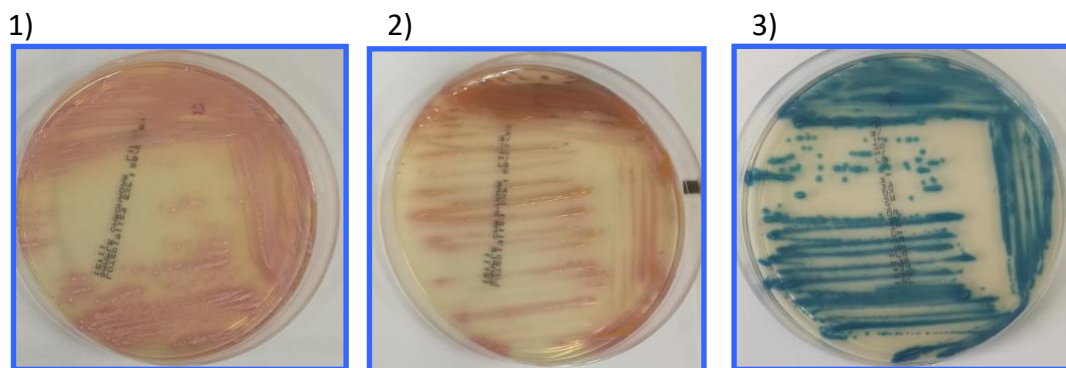


Evaluation of CHROMagar™ LIN-R for the screening of linezolid resistant *Staphylococci* from positive blood cultures and nasal swab screening samples

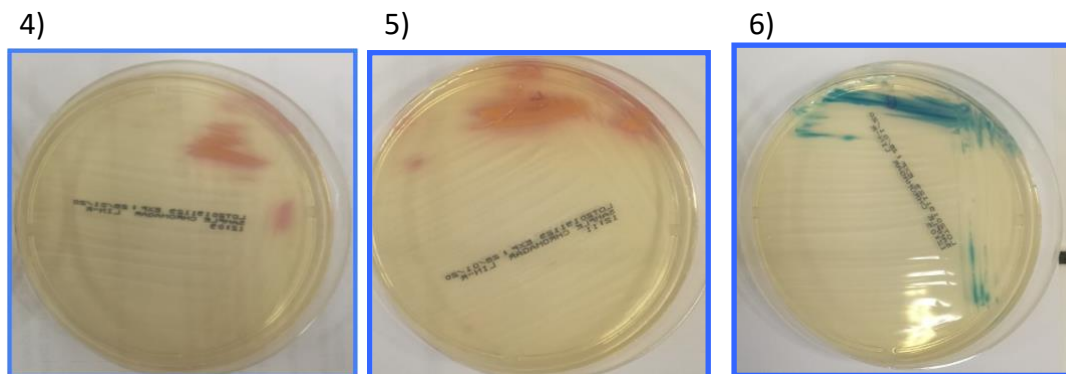
SUPPLEMENTARY FIGURES

Supplementary Figure S1. Image of the growth on CHROMagar™ LIN-R after 48h incubation at 37°C of a pure culture of A. linezolid resistant (LZD^R) *S. epidermidis* 1), *S. aureus* 2), and *E. faecium* 3), versus B. the artifactual effect of inoculum observed with (LZD^S) *S. epidermidis* 4), *S. aureus* 5) and *E. faecium* 6).

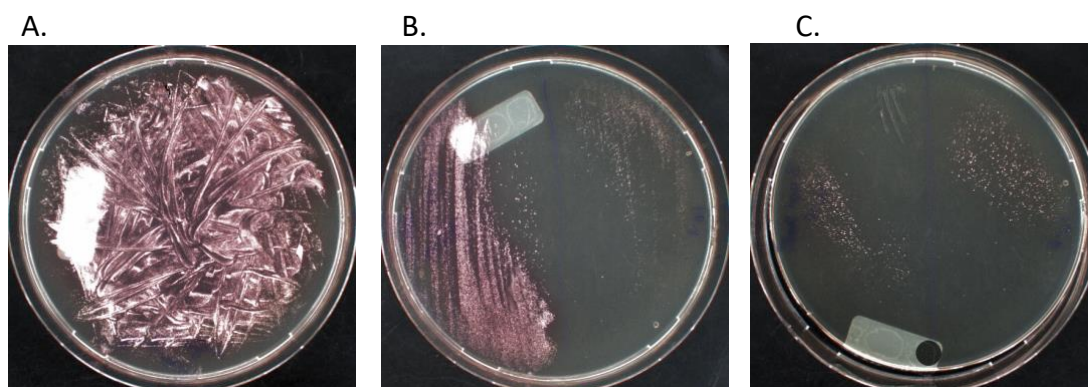
A.



B.



Supplementary Figure S2. CHROMagar™ LIN-R medium plated with positive blood culture spiked with LZD^S *S. epidermidis* after 24h of incubation.



Supplementary Figure S3. Determination of the artifactual inoculum effect observed with 10 μ l of a pure culture of a linezolid susceptible *S. epidermidis* isolate (A) 0.5 McFarland ($\sim 10^6$ CFU), (B) dilutions in sterile water at 10^{-1} ($\sim 10^5$ CFU) and 10^{-2} ($\sim 10^4$ CFU), C. 10^{-3} ($\sim 10^3$ CFU) and 10^{-4} ($\sim 10^2$ CFU).

