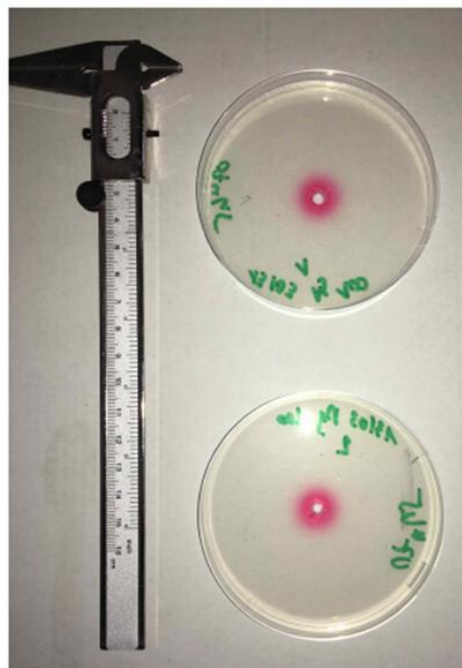


(a)



(b)

Figure S1. Evolution of dyed halos over time: (a) after 60 min and (b) after 155 min experiment. Each plate was duplicated.



(a)



(b)

Figure S2. Pictures of inoculated plates in contact with silver ions for 24 h; initial silver concentrations were respectively (a) 20 mg L⁻¹ and (b) 155 mg L⁻¹.