

Branch number, with a bootstrap value of 1 and containing 3 isolates or more. See figure below	Maximum nb of years between to isolates sampling date	Nombre de SNP max	Name of the associated clone
1	5	<i>Except three outsiders that have been colored in black, and 16 isolates that presents 65 SNPs of difference with one isolate. 55 for 134 isolates (the distance matrix is available in supplemental data Table S10)</i>	A-I
2	2	0	A-I-sub
3	4	62	
4	2	68	
5	2	188	
6	5	41	A-II
7	3	132	
8	4	129	
9	5	>200	

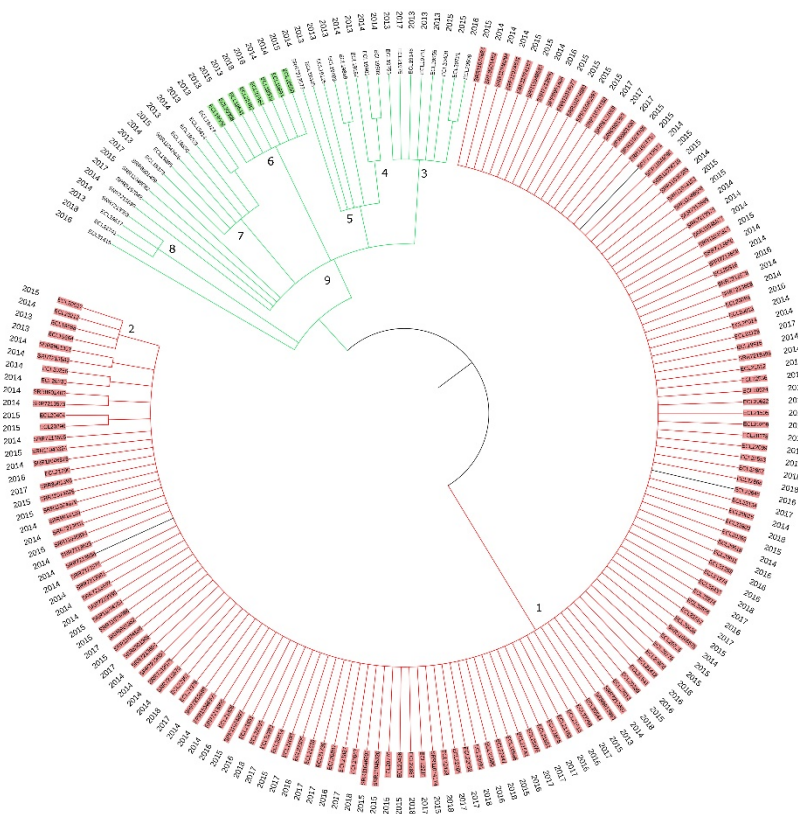


Figure S2 : Number of maximum SNPs in relation to the number of years between two isolates within each branch tree with a bootstrap value of one and composed of 3 isolates and more. The bolded branches in the table are considered as clones. In this phylogenetic analysis the number of SNP per year should not exceed 11 ($MxP = 3 \times 10^{-6} \times 3\,675\,678$).

