

Supplementary Figure

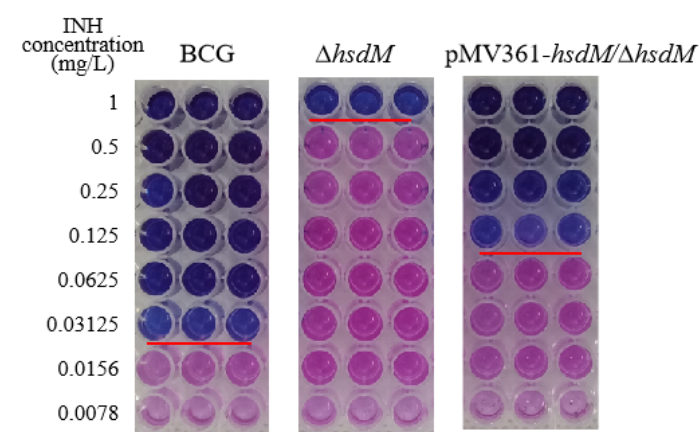


Figure S1. The MIC of INH on microplates in BCG, $\Delta hsdM$ and pMV361- $hsdM/\Delta hsdM$. Blue wells indicate no growth owing to drug inhibition and pink wells indicate growth.

Supplementary Table

Table S1. Methylated HsdM substrates: modification sites located in the gene

In a Separated Excel File.

Table S2. Methylated HsdM substrates: modification sites located upstream of the gene

In a Separated Excel File.

Table S3. HsdM-methylated substrates involved in intermediary metabolism and the respiration pathway

In a Separated Excel File.

Table S4. Primers used in this study

In a Separated Excel File.