

Figure S1: Compound 1a, ^1H NMR (400 MHz) in CDCl_3

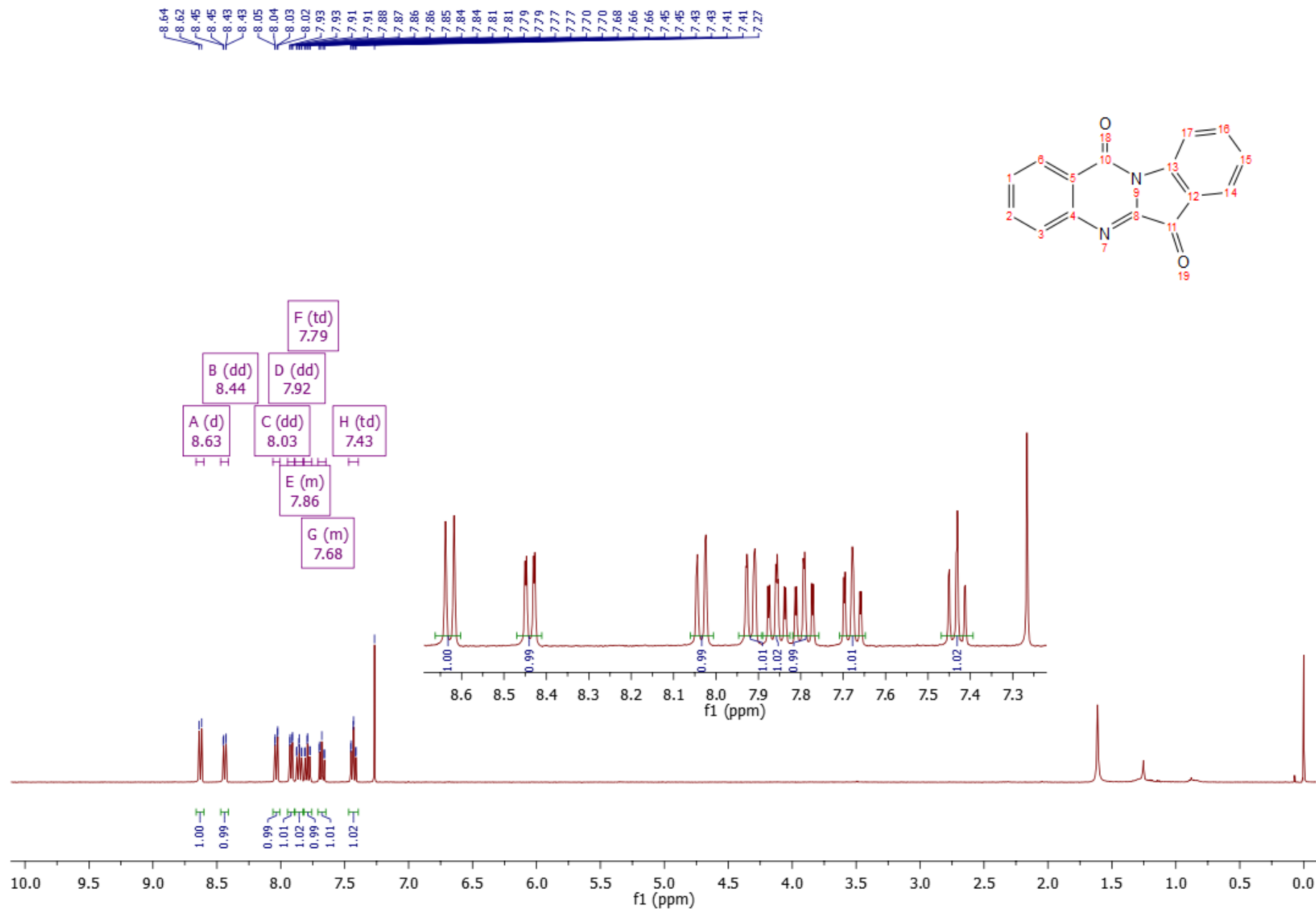


Figure S2: Compound 1a, HPLC

Panjab University Chandigarh

Acquired By admin
Sequence Name: SingleSample
Sample name: RK-1-61
Location:
Inj. volume:
Acq. method: Ravinder 1.amx
Processing method: GC_LC Area
Percent_DefaultMethod.pmx

Signal: VWD1A,Wavelength=250 nm					
Name	RT	Area	Peak Area Percent	Peak Height	Peak Height Percent
	12.35	152.000	1.80	30.608	2.01
	14.41	8,308.475	98.20	1494.760	97.99

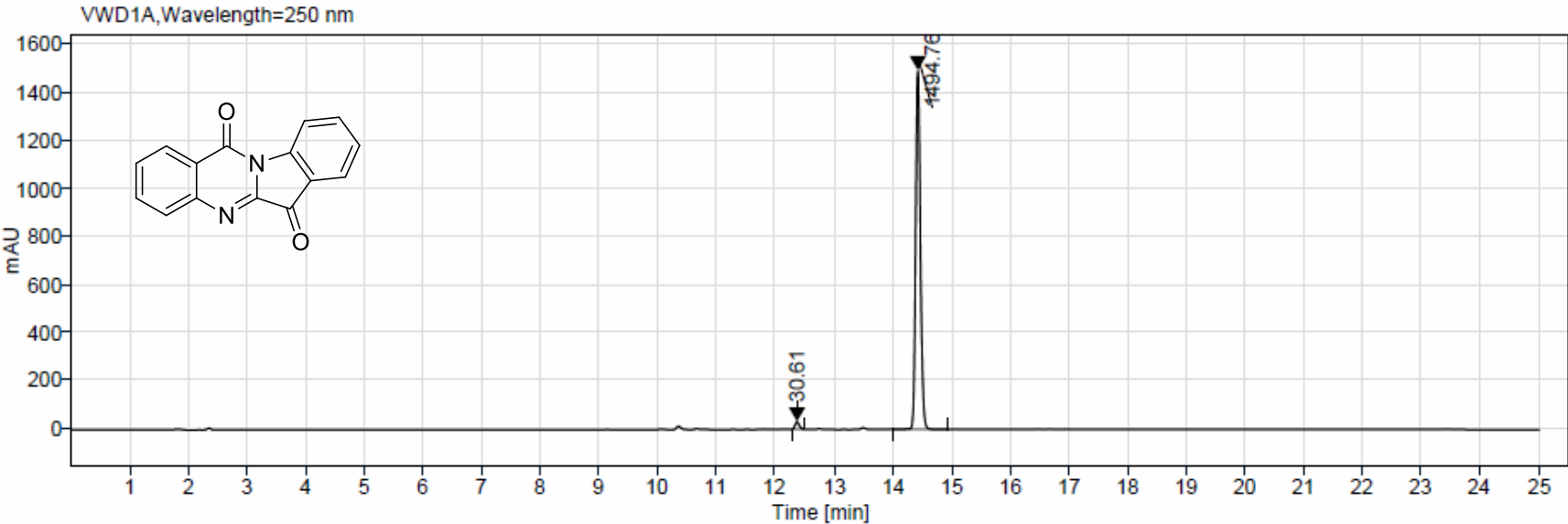


Figure S3: Compound 1b, ¹H NMR (500 MHz) in CDCl₃

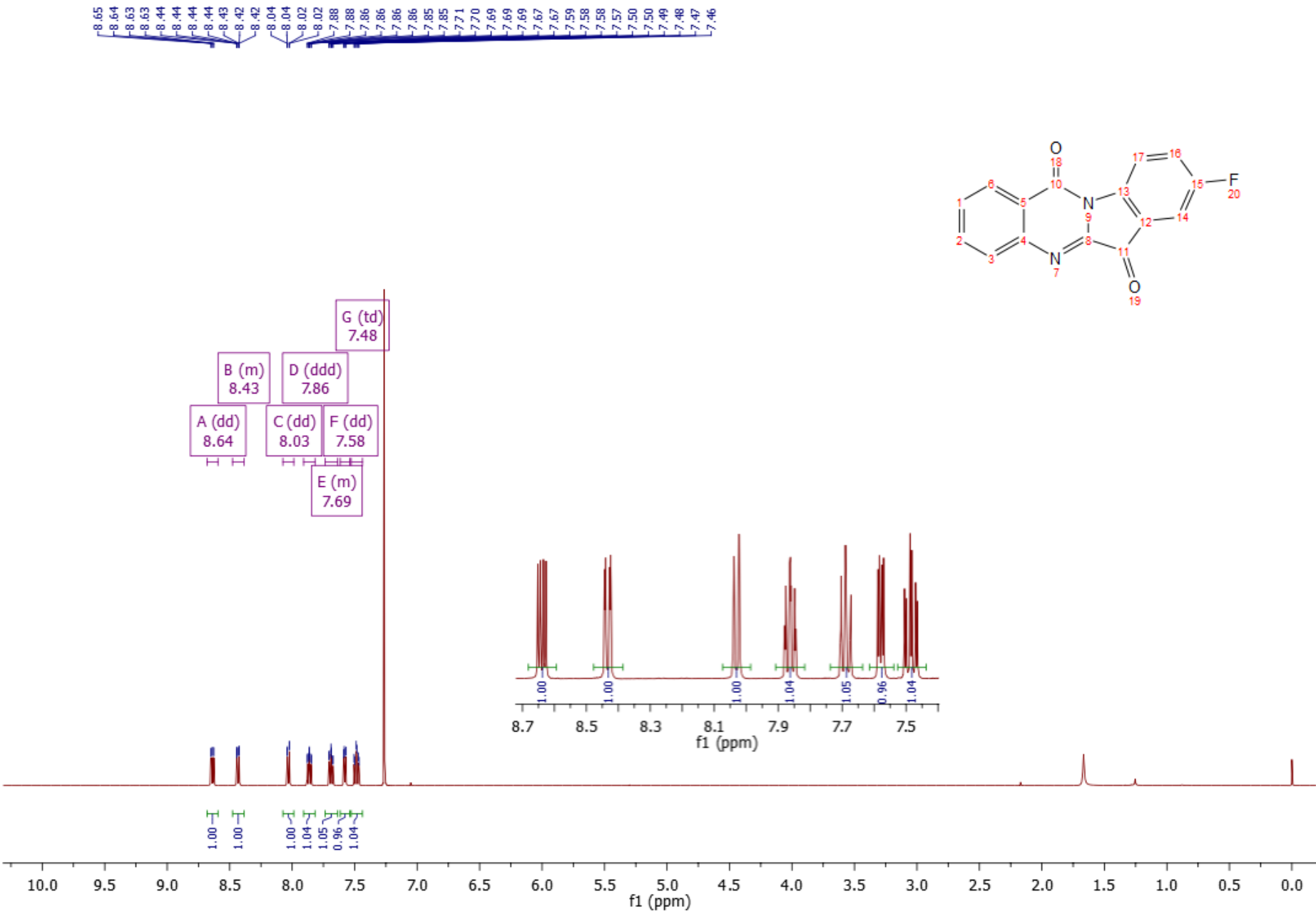


Figure S4: Compound 1b, ^{13}C NMR (126 MHz) in CDCl_3

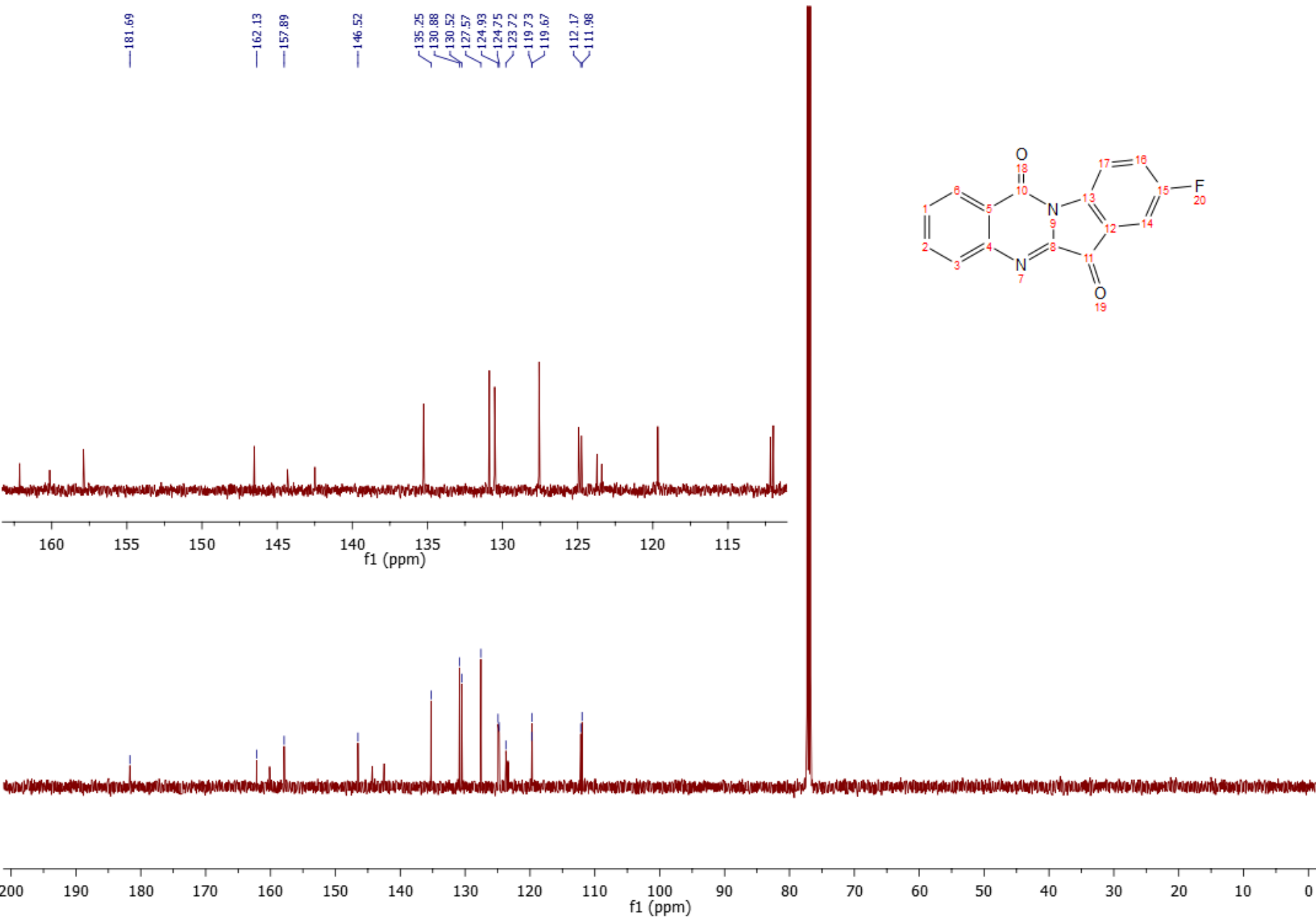


Figure S5: Compound 1b, HPLC

Panjab University Chandigarh

Acquired By admin
Sequence Name: SingleSample
Sample name: RK-2-188
Location:
Inj. volume:
Acq. method: Ravinder 1.amx
Processing method: GC_LC Area
Percent_DefaultMethod.pmx

Signal: VWD1A,Wavelength=250 nm					
Name	RT	Area	Peak Area Percent	Peak Height	Peak Height Percent
	1.74	20.817	0.11	4.203	0.14
	1.80	24.565	0.13	4.467	0.15
	2.11	7.078	0.04	1.782	0.06
	2.38	30.191	0.16	7.745	0.26
	9.12	9.679	0.05	2.396	0.08
	11.01	61.877	0.32	9.302	0.31
	15.02	19,199.503	99.04	2942.547	98.86
	15.70	13.799	0.07	1.730	0.06
	16.41	18.822	0.10	2.401	0.08

