

Supporting Information to

# Vertically-ordered mesoporous silica film based electrochemical aptasensor for highly sensitive detection of alpha-fetoprotein in human serum

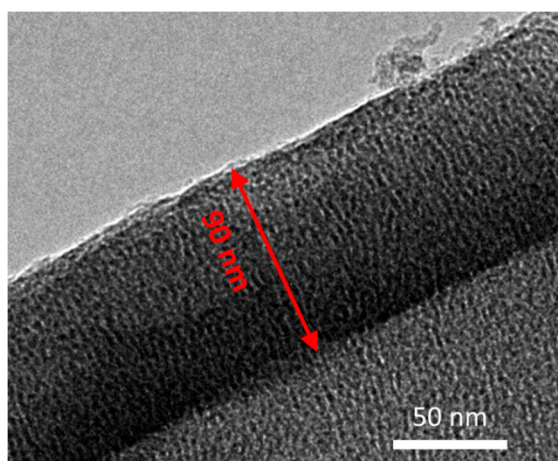
Tongtong Zhang <sup>1,†</sup>, Luoxiang Yang <sup>2,†</sup>, Fei Yan <sup>2,\*</sup> and Kai Wang <sup>1,\*</sup>

<sup>1</sup> Key Laboratory of Integrated Oncology and Intelligent Medicine of Zhejiang Province, Department of Hepatobiliary and Pancreatic Surgery, Affiliated Hangzhou First People's Hospital, Zhejiang University School of Medicine, Hangzhou 310006, China; tongtongzhang@zju.edu.cn

<sup>2</sup> Key Laboratory of Surface & Interface Science of Polymer Materials of Zhejiang Province, Department of Chemistry, Zhejiang Sci-Tech University, Hangzhou 310018, China; 202020104156@mails.zstu.edu.cn

\* Correspondence: yanfei@zstu.edu.cn (F.Y.); kaiw3@zju.edu.cn (K.W.)

† These authors contributed equally to this work.



**Figure S1.** Cross-sectional TEM image of VMSF.