

Supplementary Information

Salivary Glucose Detection with Laser Induced Graphene/AgNPs Non-Enzymatic Sensor

Eider Pedro Aparicio-Martínez ¹, Alejandro Vega-Rios ¹, Velia Osuna ² and Rocio Berenice Dominguez ^{2,*}

¹ Centro de Investigación en Materiales Avanzados, SC, Miguel de Cervantes #120, Complejo Industrial Chihuahua, Chihuahua 31136, Mexico

² CONACyT-CIMAV, SC, Miguel de Cervantes #120, Complejo Industrial Chihuahua, Chihuahua 31136, Mexico

* Correspondence: berenice.dominguez@cimav.edu.mx

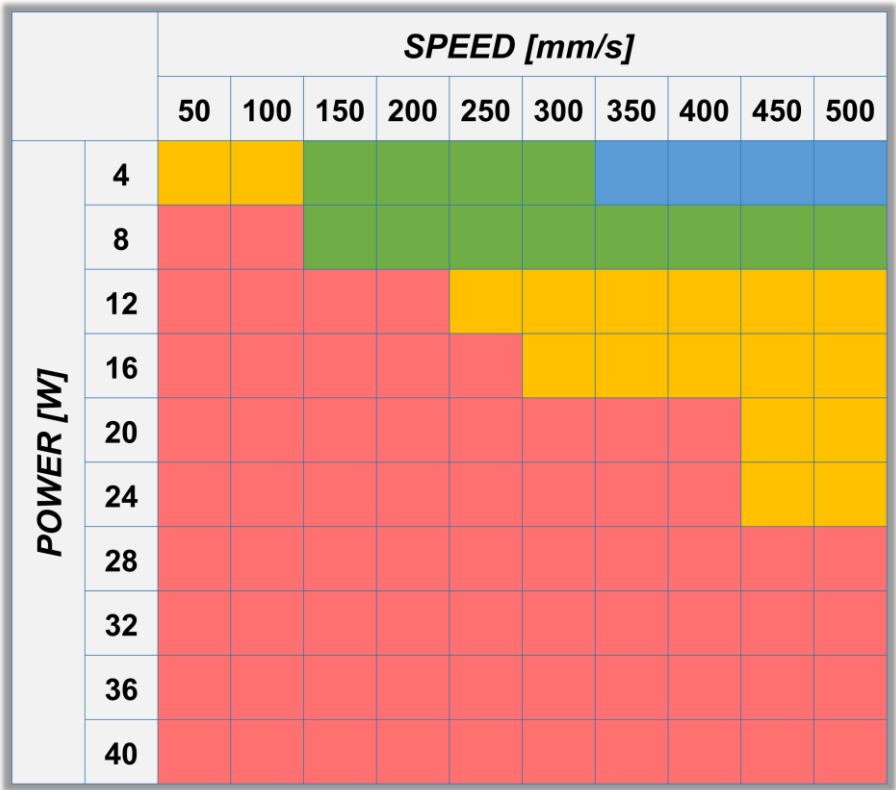


Figure S1. Processing conditions of power and speed for LIG production.

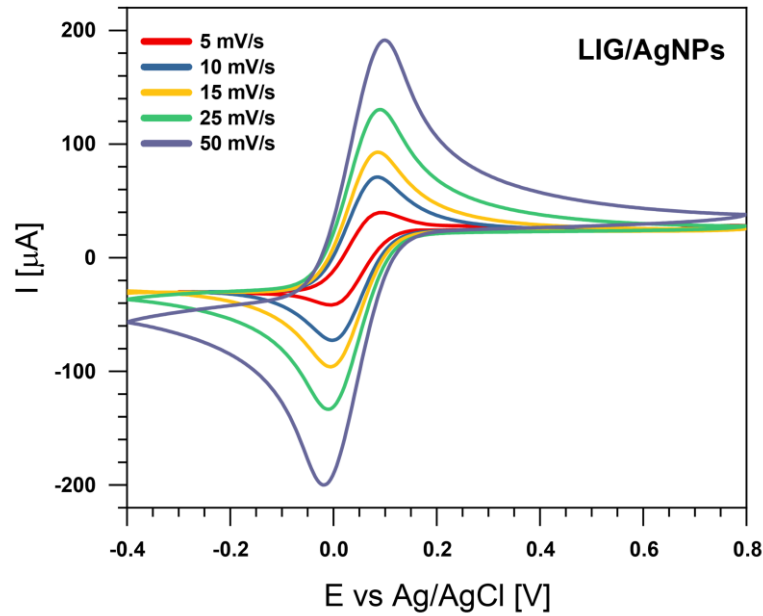


Figure S2. CV of LIG electrode with redox couple $K_3[Fe (CN)_6]/K_4[Fe (CN)_6]$.

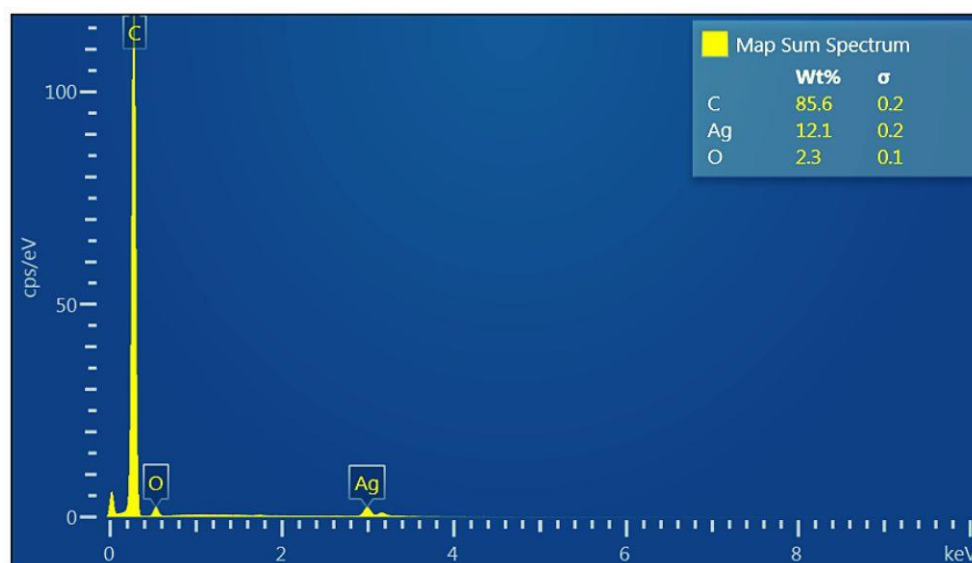


Figure S3. EDS specter of LIG/AgNPs non-enzymatic sensor.

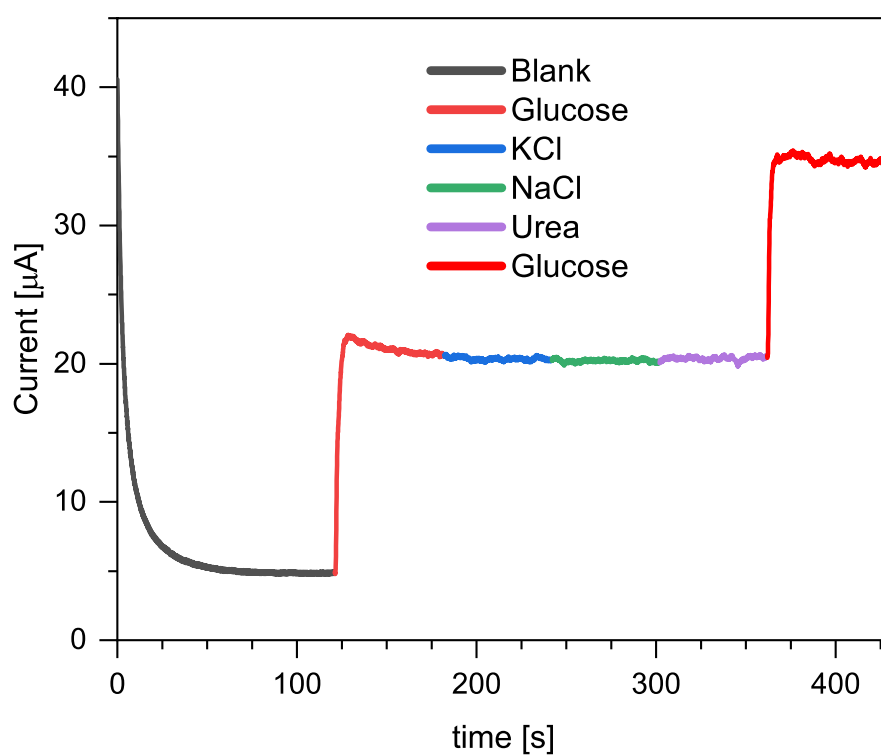


Figure S4. Interference analysis of LIG/AgNPs non-enzymatic sensor.