

# Supporting Information

## Correlative Raman-Electron-Light (CREL) Microscopy Analysis of Lipid Droplets in Melanoma Cancer Stem Cells

**Francesca Pagliari<sup>1,2,#</sup>, Elisa Sogne<sup>2,3#</sup>, Davide Panella<sup>4</sup>, Gerardo Perozziello<sup>4</sup>, Carlo Liberale<sup>2</sup>, Gobind Das<sup>2,5</sup>, Alice Turdo<sup>6</sup>, Simone Di Franco<sup>7</sup>, Joao Seco<sup>1,8</sup>, Andrea Falqui<sup>9</sup>, Santo Gratteri<sup>10</sup>, Arturo Pujia<sup>11</sup>, Enzo Di Fabrizio<sup>12</sup>, Patrizio Caneloro<sup>4\*</sup> and Luca Tirinato<sup>1,2,11\*</sup>.**

<sup>1</sup> Division of Biomedical Physics in Radiation Oncology, German Cancer Research Center (DKFZ), 69120 Heidelberg, Germany

<sup>2</sup> Biological and Environmental Science and Engineering, King Abdullah University of Science and Technology (KAUST), Saudi Arabia

<sup>3</sup> PoliFAB, Polytechnic of Milan, Via Giuseppe Colombo, 81, 20133 Milan, Italy

<sup>4</sup> Nanotechnology Research Center, Department of Experimental and Clinical Medicine, University of Magna Graecia, 88100 Catanzaro, Italy

<sup>5</sup> Department of Physics, Khalifa University, Abu Dhabi, United Arab Emirates

<sup>6</sup> Department of Health Promotion, Mother and Child Care, Internal Medicine, and Medical Specialties (PROMISE), University of Palermo, Palermo, Italy

<sup>7</sup> Department of Surgical, Oncological and Stomatological Sciences (DICHIRONS), University of Palermo, Palermo, Italy

<sup>8</sup> Department of Physics and Astronomy, Heidelberg University, 69120 Heidelberg, Germany

<sup>9</sup> Department of Physics "Aldo Pontremoli", University of Milan, Via Celoria 16, 20133 Milan, Italy

<sup>10</sup> Institute of Research for Food Safety & Health IRC-FSH, University Magna Graecia, 88100 Catanzaro, Italy

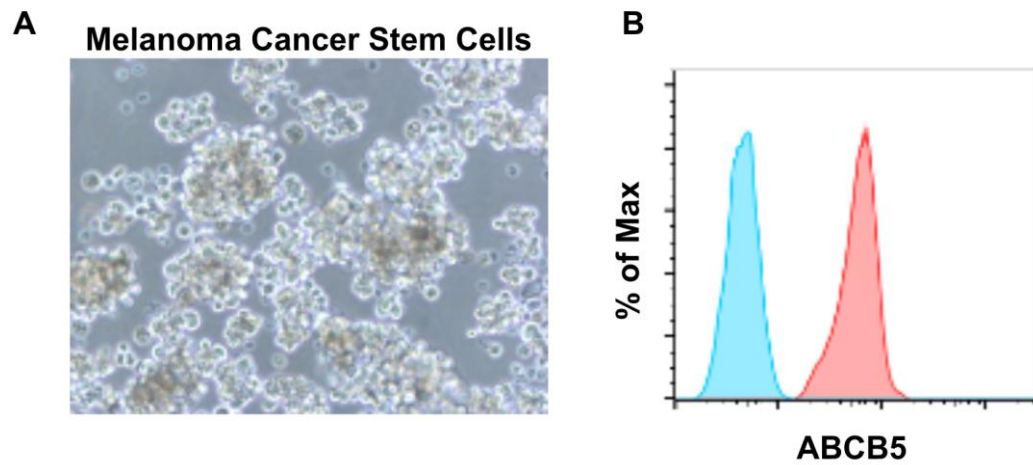
<sup>11</sup> Department of Medical and Surgical Science, University Magna Graecia, 88100, Catanzaro, Italy

<sup>12</sup> Department of Applied Science and Technology, Polytechnic of Turin, Corso Duca degli Abruzzi 24, 10129 Turin, Italy

# These authors contributed equally

\* Correspondence: [tirinato@unicz.it](mailto:tirinato@unicz.it); [patrizio.caneloro@unicz.it](mailto:patrizio.caneloro@unicz.it)

## Supporting Figure S1



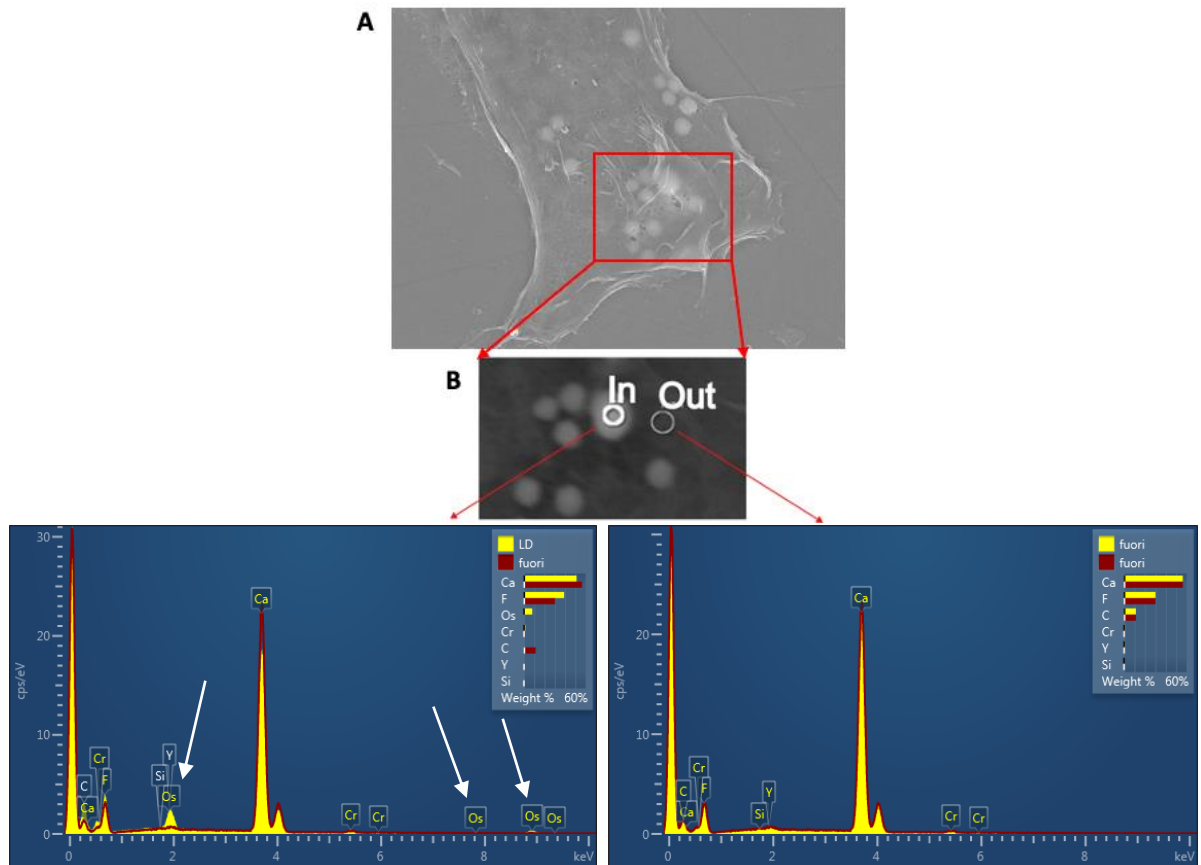
**Figure S1. Patient-derived Melanoma Cancer Stem Cells.** **A)** Representative phase contrast analysis of melanoma stem cells. **B)** Flow cytometry analysis of ABCB5 on melanoma stem cell. The isotype-matched control is shown in light blue.

## Supporting Table S1

Raman Shift (cm-1)	Peak Assignment
750	Cytochrome C
782	<b>DNA/RNA</b> Nucleotides
1076	Stretching P-O-CH <sub>3</sub>
1093	DNA Backbone
1128	Cytochrome C
1262	C-H <i>cis</i> -stretch: <b>Unsaturated Lipids</b>
1301	CH <sub>2</sub> Twist: <b>Saturated Lipids</b>
1312	CH <sub>3</sub> CH <sub>2</sub> Twist: <b>Lipids</b>
1338	CH <sub>2</sub> /CH <sub>3</sub> Wagging, Twisting &/or Bending mode: <b>Lipids</b>
1440	<b>Lipid/Protein</b> Marker
1578	G, A <b>DNA</b> Bases
1582	Cytochrome C
1654	Overlapping of Amide III with <b>Unsaturated Lipids</b>
1743	<b>Lipids</b> : Ester Band
2850	CH <sub>2</sub> Symmetric Stretching: <b>Unsaturated Lipids</b>
2885	CH <sub>2</sub> Asymmetric Stretching: <b>Saturated Lipids</b>

Table S1. Tentative assignment of main Raman peaks.

## Supporting Figure S2



**Figure S2. Osmium BSE-SEM detection within LDs.** Osmium-related higher BSE-SEM contrast as an indirect further indication of LD presence