



Supporting Information

# Hydrogen induced etching features of wrinkled graphene domains

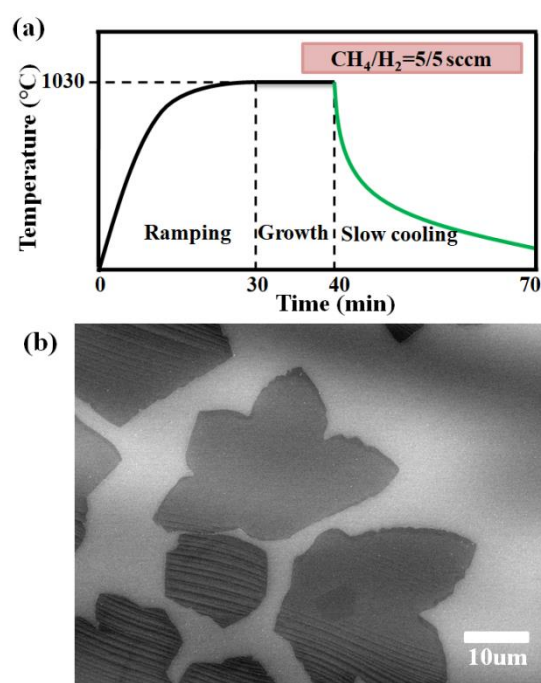
Qiongyu Li <sup>1</sup>, Fang Li <sup>1</sup>, You Li <sup>1</sup>, Yongping Du <sup>1</sup>, Tien-Mo Shih <sup>2</sup> and Erjun Kan <sup>1,\*</sup>

<sup>1</sup> Department of Applied Physics and Institution of Energy and Microstructure, Nanjing University of Science and Technology, Nanjing 210094, China; qyli@njust.edu.cn (Q.L.); lifang@njust.edu.cn (F.L.); liyou18@njust.edu.cn (Y.L.); njstdyp@njust.edu.cn (Y.D.)

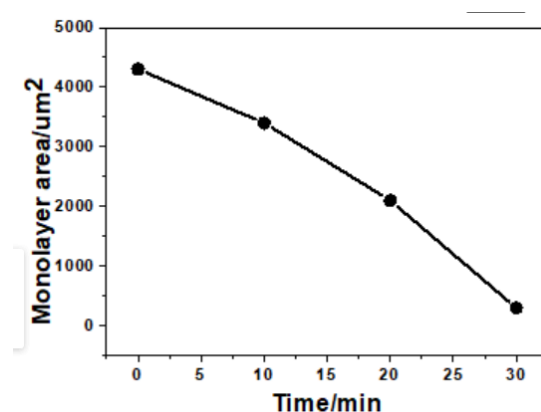
<sup>2</sup> Department of Mechanical Engineering, University of California, Berkeley, CA 94720, USA; tshih111@gmail.com

\* Correspondence: ekan@njust.edu.cn

Received: 22 May 2019; Accepted: 10 June 2019; Published: date



**Figure S1.** (a) Synthesis of graphene under slow cooling down process. (b) SEM images of as synthesized graphene domain.



**Figure S2.** Statistical data of the area of monolayer graphene with etching time.