

## *Supporting information*

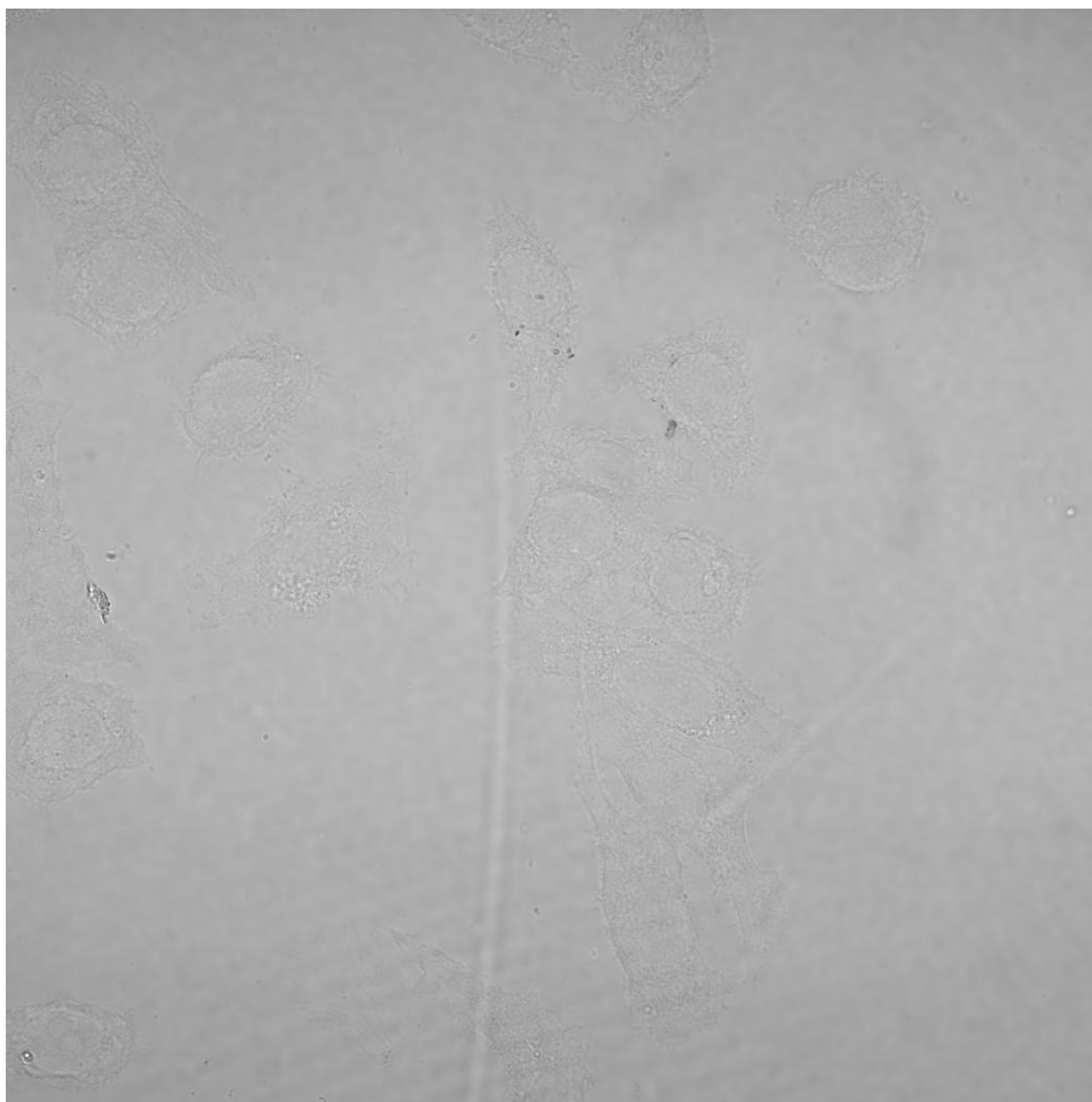
# **Homologous Gold Nanoparticles and Nanoclusters Composites with Enhanced Surface Raman Scattering and Metal Fluorescence for Cancer Imaging**

Xiaoxia Wu <sup>1,2</sup>, Yan Peng <sup>1</sup>, Xiaomei Duan <sup>1</sup>, Lingyan Yang <sup>1</sup>, Jinze Lan <sup>1</sup> and Fu Wang <sup>1,\*</sup>

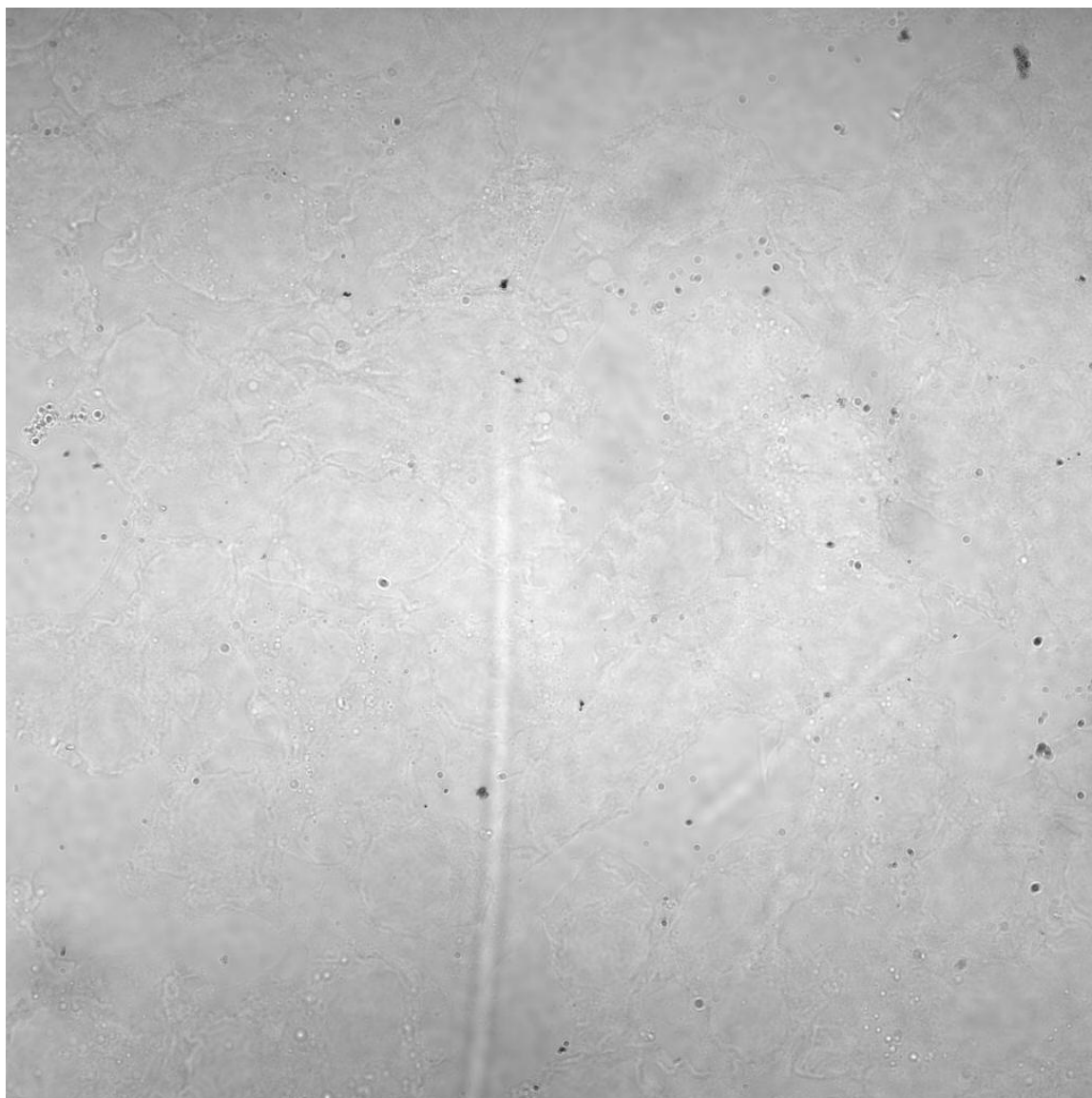
<sup>1</sup> Laboratory of Environmental Sciences and Technology, Xinjiang Technical Institute of Physics & Chemistry, Chinese Academy of Sciences, Urumqi, Xinjiang 830011, China; wuxx@ms.xjb.ac.cn (X.W.); yanpeng9236@sina.com (Y.P.); 1498244651@qq.com (X.D.); 994125943@qq.com (L.Y.); 593530519@qq.com (J.L.)

<sup>2</sup> University of Chinese Academy of Sciences, No. 19 Yuquan Road, Beijing 100049, China

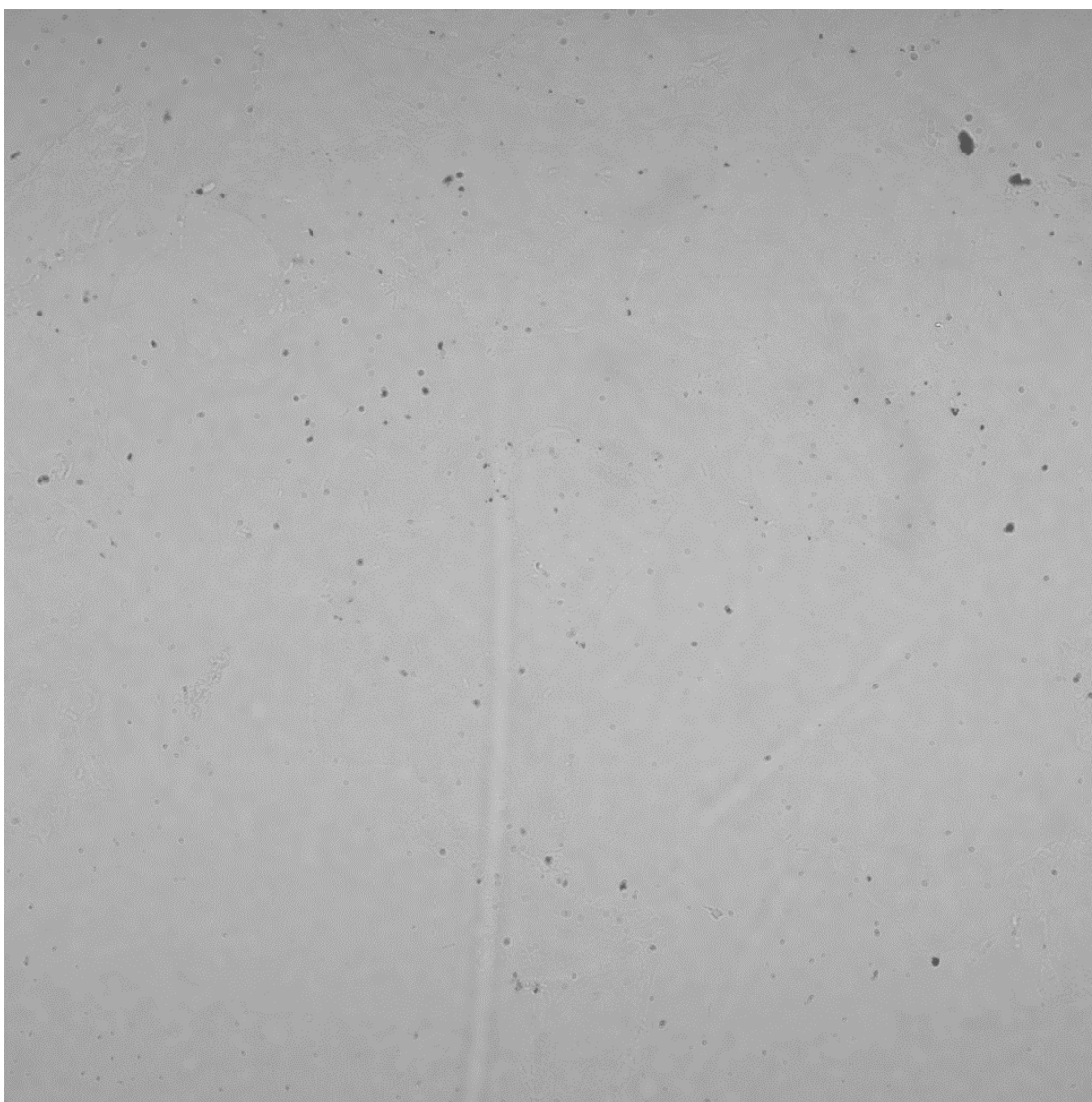
\* Correspondence: wangfu@sjtu.edu.cn (F.W.); Tel.: +86-021-54742824 (F.W.)



**Figure S1.** The bright field of laser confocal microscopy images for HeLa cells incubated without nanoparticles.



**Figure S2.** The bright field of laser confocal microscopy images for HeLa cells incubated with AuNPC nanoparticles.



**Figure S3.** The bright field of laser confocal microscopy images for HeLa cells incubated with AuNPC-RGD nanoparticles.