

Figure S1. Shows the EDS characterization of thin copper-coated SWCNT/PMMA thin-film composite. This confirms the presence of functional group with Cu in the copper-coated SWCNT/PMMA composite.

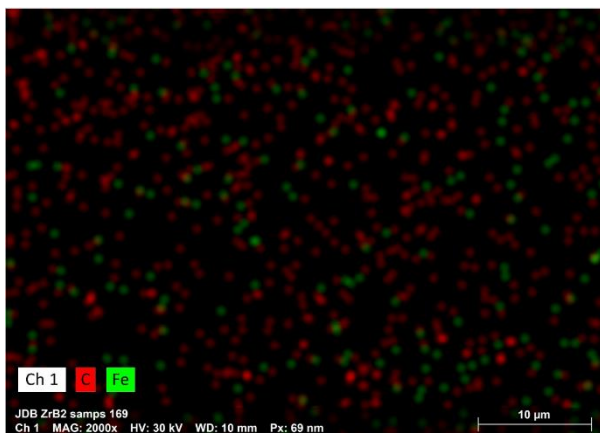


Figure S2. Shows the EDS characterization of the ferrocene-doped-SWCNT/PMMA. This confirms that ferrocene is present in the ferrocene doped-SWCNT/PMMA composite.