

SBA-15 Mesoporous Silica as Delivery Vehicle for rhBMP-2 Bone Morphogenic Protein for Dental Applications

Dimitrios Gkiliopoulos ^{1,2}, Ioannis Tsamesidis ³, Anna Theocharidou ³, Georgia K. Pouroutzidou ^{3,4}, Evi Christodoulou ⁵, Evangelia Stalika ³, Konstantinos Xanthopoulos ⁶, Dimitrios Bikiaris ⁵, Konstantinos Triantafyllidis ^{1,2} and Eleana Kontonasaki ^{3,*}

- ¹ Laboratory of Chemical and Environmental Technology, Department of Chemistry, Aristotle University of Thessaloniki, GR-54124 Thessaloniki, Greece; dgiliopo@chem.auth.gr (D.G.); ktrianta@chem.auth.gr (K.T.)
 - ² Center for Interdisciplinary Research and Innovation (CIRI-AUTH), Balkan Center, 57001 Thessaloniki, Greece
 - ³ Department of Prosthodontics, School of Dentistry, Faculty of Health Sciences, Aristotle University of Thessaloniki, GR-54124 Thessaloniki, Greece; itsamesidis@auth.gr (I.T.); antheo@dent.auth.gr (A.T.); gpourout@physics.auth.gr (G.K.P.); evangelia.stalika@gmail.com (E.S.)
 - ⁴ Laboratory of Advanced Materials and Devices (AMDeLab), School of Physics, Faculty of Sciences, Aristotle University of Thessaloniki, GR-54124 Thessaloniki, Greece
 - ⁵ Laboratory of Polymer Chemistry and Technology, Department of Chemistry, Aristotle University of Thessaloniki, GR-54124 Thessaloniki, Greece; evicius@gmail.com (E.C.); dbic@chem.auth.gr (D.B.)
 - ⁶ Laboratory of Pharmacology, School of Pharmacy, Faculty of Health Sciences, Aristotle University of Thessaloniki, GR-54124 Thessaloniki, Greece; xantho@pharm.auth.gr
- * Correspondence: kont@dent.auth.gr

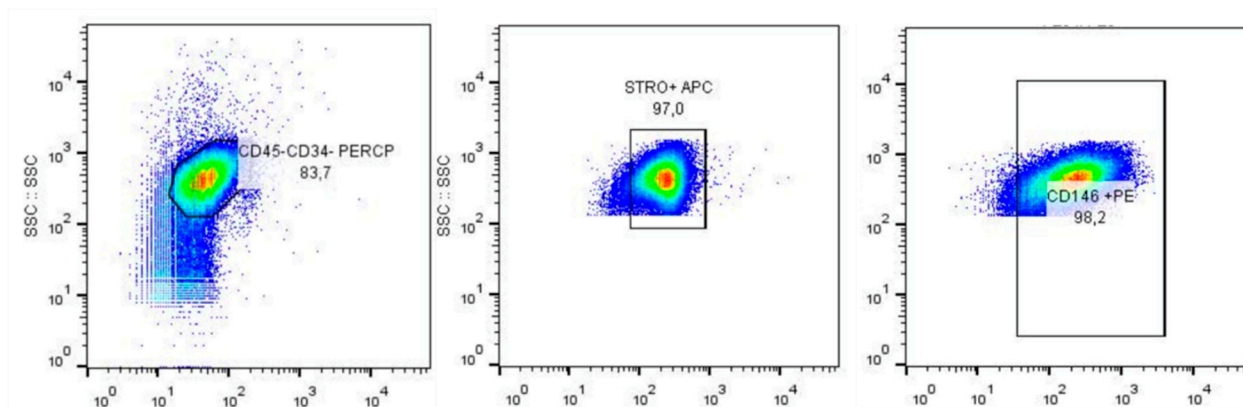


Figure S1. Representative flow cytometric density plot of hPDLs using as reference markers: C45-C34, STRO-1 and CD146. The 83.7% of the cells were double negative for the hematopoietic markers C45-C34, 97% of these cells expressed STRO-1 and 98.2% CD146, proving the stem cell properties of human periodontal ligament cells.