

## Supplementary Materials

# Comparing Commercial Metal-Coated AFM Tips and Home-Made Bulk Gold Tips for Tip-Enhanced Raman Spectroscopy of Polymer Functionalized Multiwalled Carbon Nanotubes

Antonino Foti <sup>1,2,\*</sup>, Suriya Venkatesan <sup>2,†</sup>, Bérengère Lebental <sup>2,3</sup>, Gaël Zucchi <sup>2</sup> and Razvigor Ossikovski <sup>2,\*</sup>

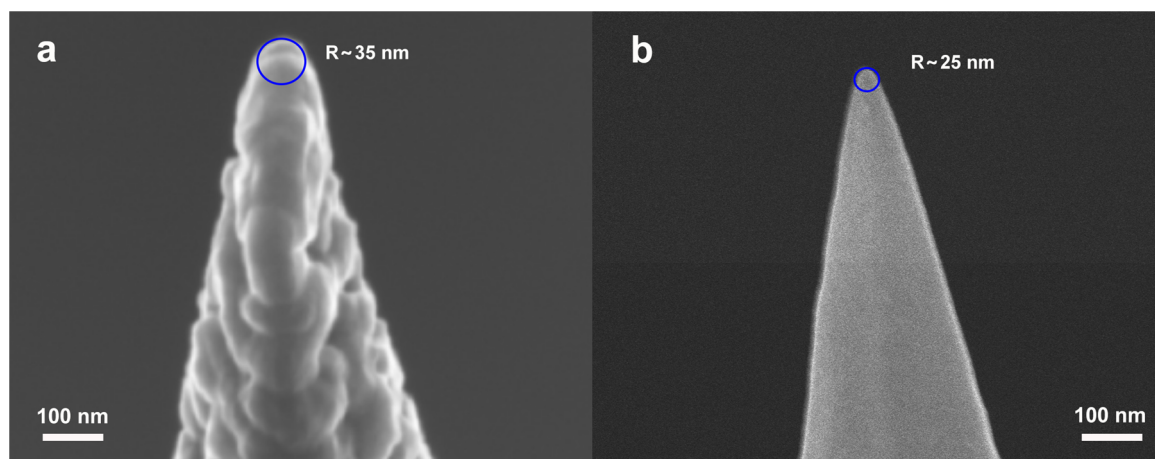
<sup>1</sup> CNR—IPCF, Istituto per I Processi Chimico-Fisici, Viale F. Stagno d'Alcontres 37, 98158 Messina, Italy

<sup>2</sup> LPICM, CNRS, Ecole Polytechnique, Institut Polytechnique de Paris, Route de Saclay, 91128 Palaiseau, France; suriya.venkatesan@dlr.de (S.V.); berengere.lebental@univ-eiffel.fr (B.L.); gael.zucchi@polytechnique.edu (G.Z.)

<sup>3</sup> COSYS-LISIS, Université Gustave Eiffel, IFSTTAR, 77454 Marne-la-Vallée, France

\* Correspondence: antonino.foti@cnr.it (A.F.); razvigor.ossikovski@polytechnique.edu (R.O.)

† Current address: Department of Electrochemical Energy Technology, Institute of Engineering Thermodynamics, German Aerospace Centre (DLR), D-70569 Stuttgart, Germany.



**Figure S1.** Tips morphology. (a) Typical SEM image of a commercial AFM-TERS Tips (Courtesy of Dr. Agnes Tempez from HORIBA Scientific). (b) Typical SEM image of an electrochemically etched Au tip.