



## Supplementary Materials

# MoS<sub>2</sub>-Decorated Graphene@porous Carbon Nanofiber Anodes Via Centrifugal Spinning

Elham Abdolrazzaghan <sup>1</sup>, Jiadeng Zhu <sup>2</sup>, Juran Kim <sup>3,\*</sup> and Meltem Yanilmaz <sup>1,4,\*</sup>

<sup>1</sup> Department of Nano Science and Nano Engineering, Istanbul Technical University, Istanbul 34469, Turkey; elham.a1992@gmail.com

<sup>2</sup> Oak Ridge National Laboratory, Chemical Sciences Division, Oak Ridge, TN 37831, USA; jzhu14@ncsu.edu

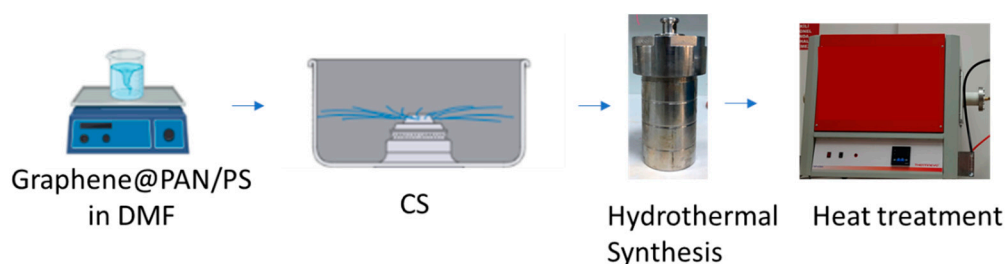
<sup>3</sup> Advanced Textile R&D Department, Korea Institute of Industrial Technology (KITECH), Ansan 15588, Korea

<sup>4</sup> Department of Textile Engineering, Istanbul Technical University, Istanbul 34437, Turkey

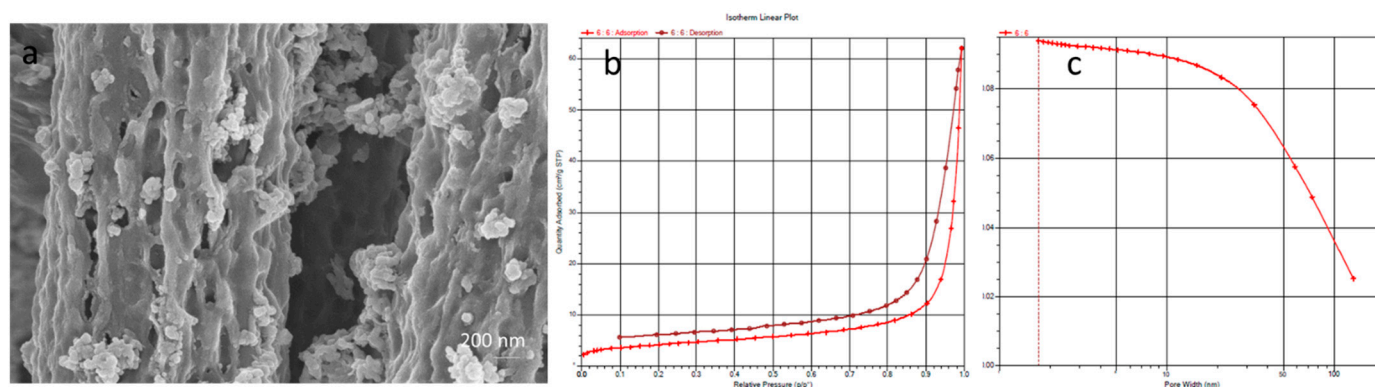
\* Correspondence: jkim0106@kitech.re.kr (J.K.); yanilmaz@itu.edu.tr (M.Y.)

**Table S1.** Interlayer spacing  $d_{(002)}$ , crystalline size  $L_c$  and in-plane graphitic crystalline size ( $L_a$ ) of CNF-700, CNF-800 and CNF-900

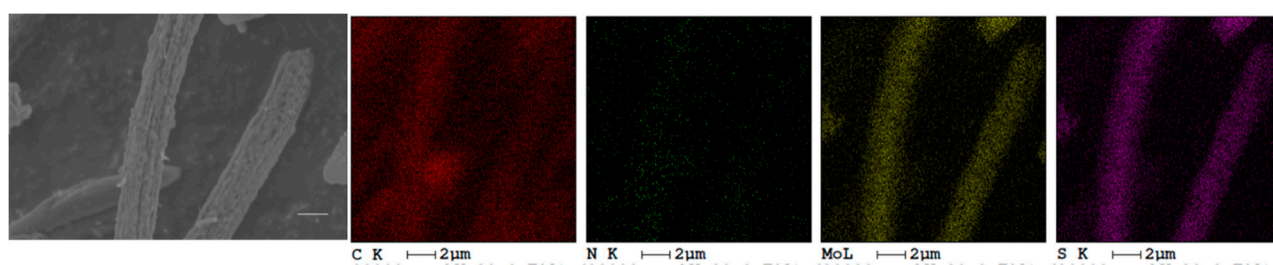
| Sample name | D(002), (nm) | Crystalline size $L_c$ , (nm) | In-plane graphitic crystalline size ( $L_a$ ), (nm) |
|-------------|--------------|-------------------------------|---|
| CNF-700 °C  | 0.359        | 1.07                          | 3.9   |
| CNF-800 °C  | 0.353        | 1.11                          | 4.4   |
| CNF-900 °C  | 0.352        | 1.13                          | 4.4   |



**Figure S1.** Schematic of preparation of MoS<sub>2</sub> decorated on graphene@PCNFs.



**Figure S2.** SEM image (a), N<sub>2</sub> adsorption-desorption isotherms (b) and BJH plots (c) of MoS<sub>2</sub> decorated on graphene@PCNFs.



**Figure S3.** EDX mapping of MoS<sub>2</sub> decorated on graphene@PCNFs.