



Supporting Information

Solar Light Photoactive Floating Polyaniline/TiO₂ Composites for Water Remediation

Ermelinda Falletta ^{1,2,*}, Anna Bruni ¹, Marta Sartirana ¹, Daria C. Boffito ³, Giuseppina Cerrato ⁴, Alessia Giordana ⁴, Ridha Djellabi ^{1,2}, Erfan S. Khatibi ¹ and Claudia L. Bianchi ^{1,2}

¹ Department of Chemistry, Università degli Studi di Milano, via Golgi 19, 20133 Milano, Italy; anna.bruni@unimi.it (A.B.); marta.sartirana@unimi.it (M.S.); ridha.djellabi@unimi.it (R.D.); erfan.saberkhatibi@studenti.unimi.it (E.S.K.); claudia.bianchi@unimi.it (C.L.B.)

² Consorzio Interuniversitario Nazionale per la Scienza e Tecnologia dei Materiali (INSTM), via Giusti 9, 50121 Florence, Italy

³ Polytechnique Montréal—Génie Chimique 2900 Boul, Edouard Montpetit—H3T 1J4, Montréal, QC H3C 3A7, Canada; daria-camilla.boffito@polymtl.ca

⁴ Department of Chemistry, Università degli Studi di Torino, via Pietro Giuria, 7, 10125 Torino, Italy; giuseppina.cerrato@unito.it (G.C.); alessia.giordana@unito.it (A.G.)

* Correspondence: ermelinda.falletta@unimi.it; Tel.: +39-025-031-4410

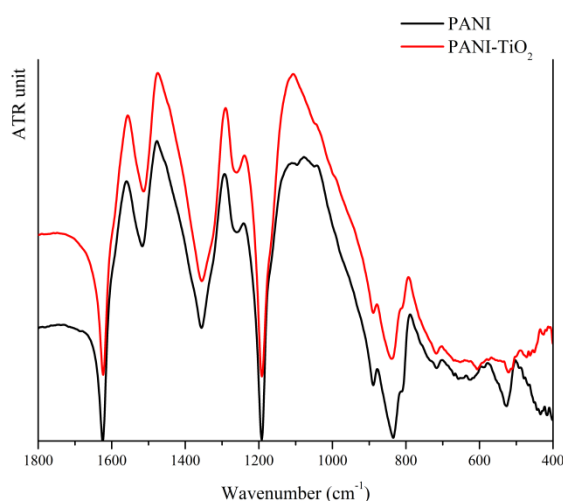
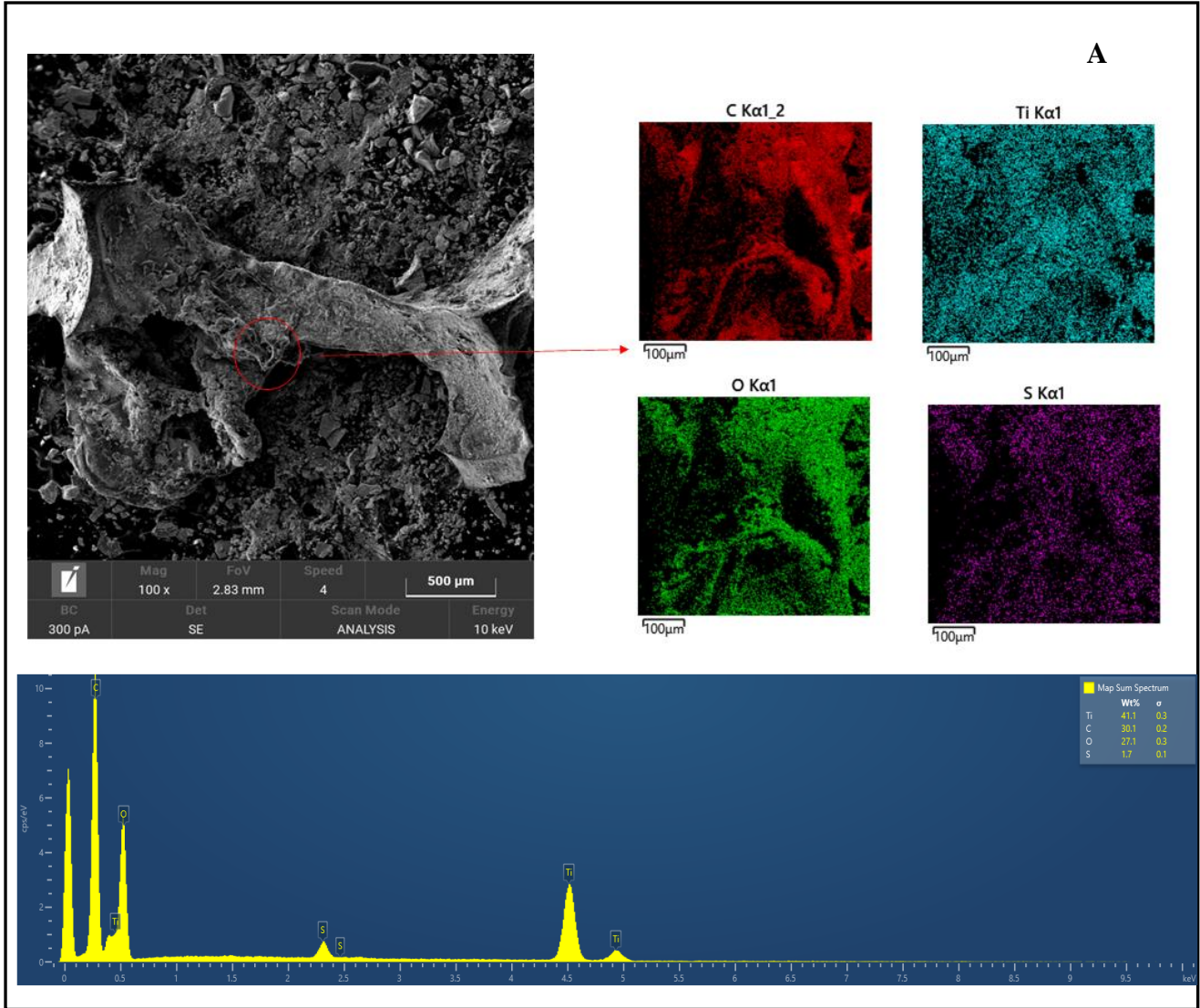


Figure S1. ATR-FTIR spectra of PANI and PANI/TiO₂.



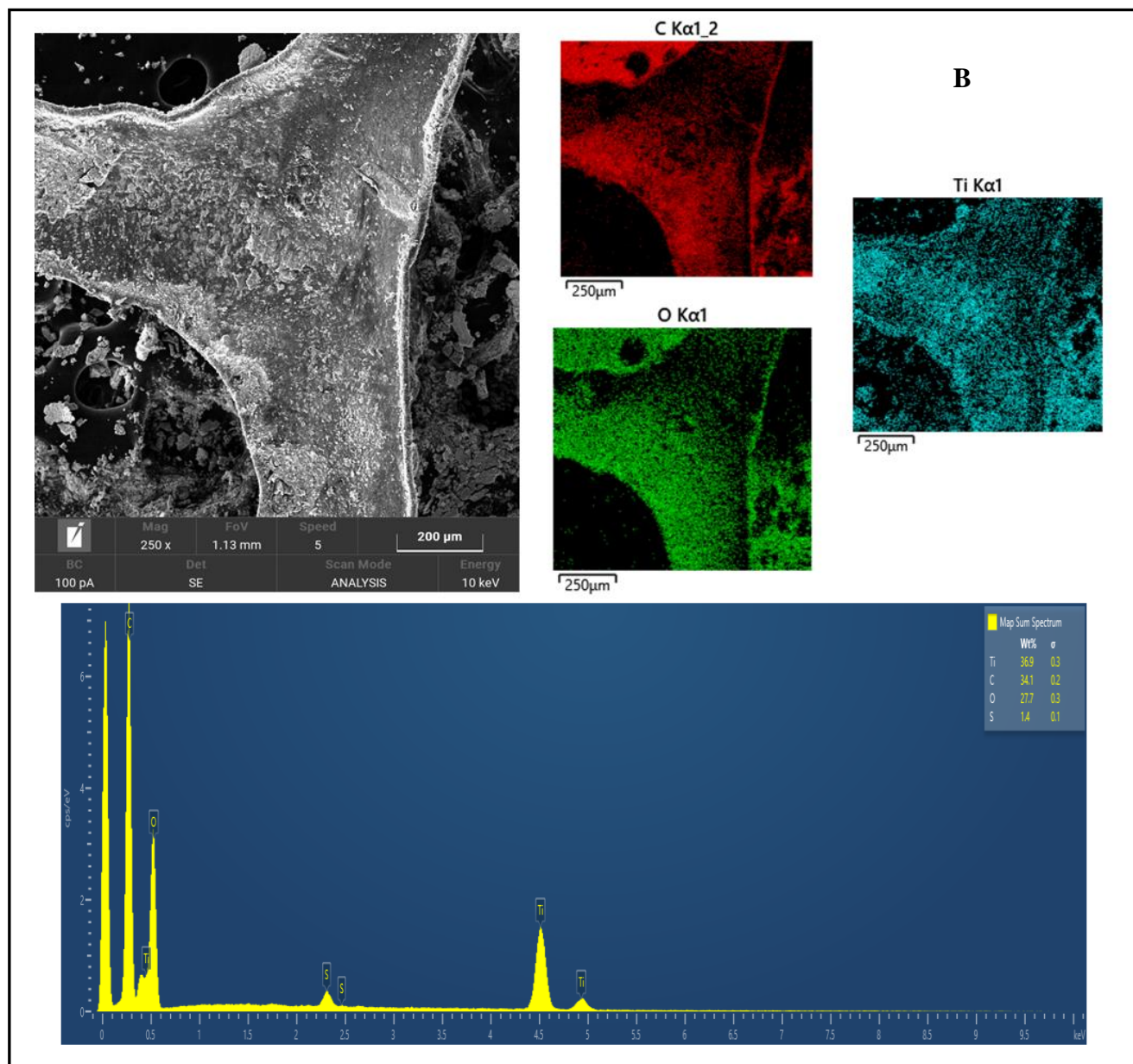


Figure S2. FESEM images and EDS analyses of (A) PT/PU-4 and (B) PT/PU-6.

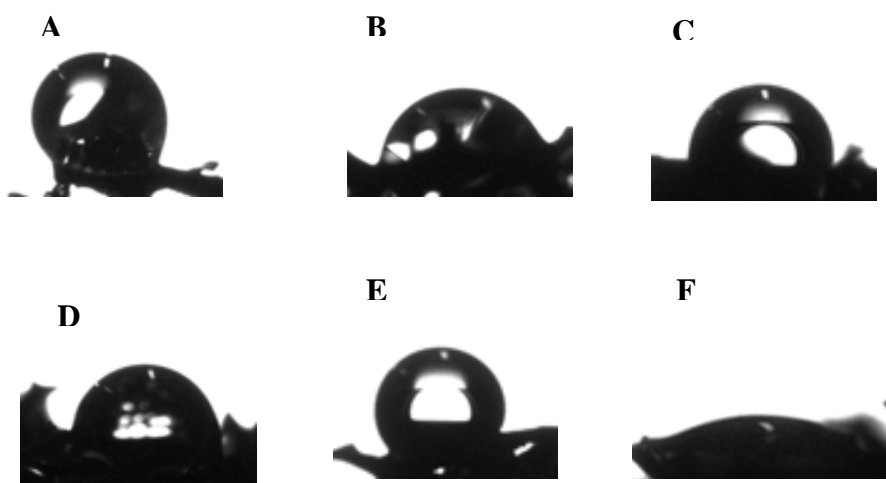


Figure S3. Contact angle images for droplets water on: (A) P/PU, (B) PT/PU-1, (C) PT/PU-2, (D) PT/PU-3, (E) PT/PU-4, (F) PT/PU-5.

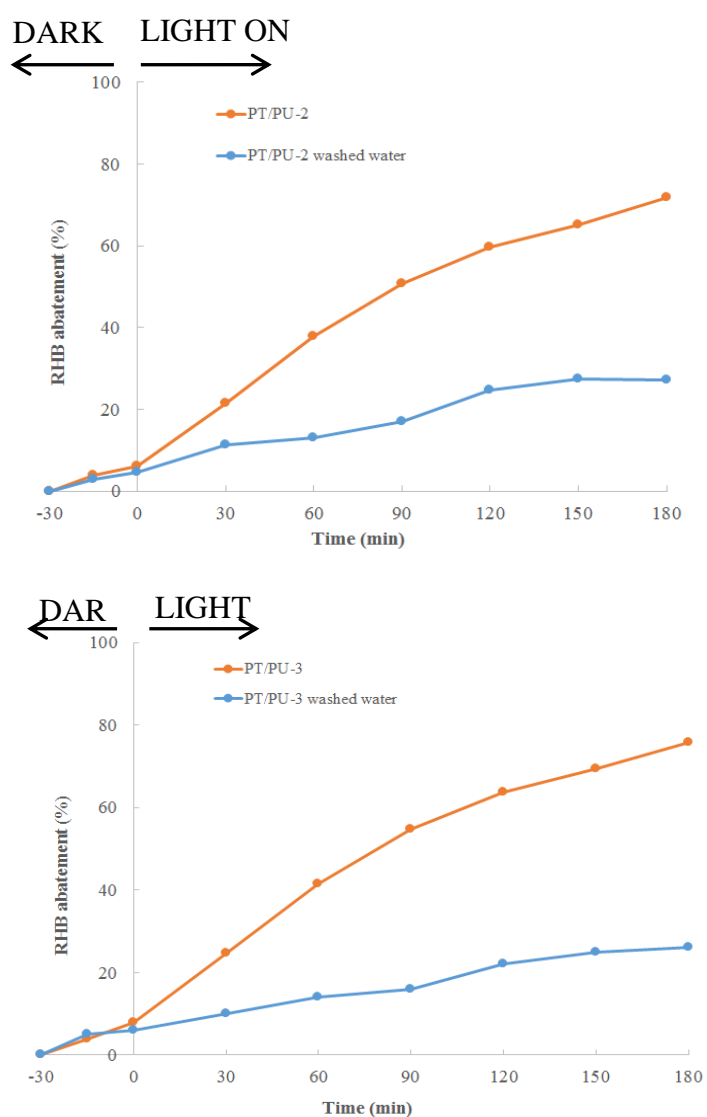


Figure S4. Reuse of PT/PU-2 (up) and PT/PU-3 (down) for RHB abatement after washing with water