

Figure S1: Droplet size (71.97 nm with Pdl 0.619) and zeta potential (-19.1 mV) of NE1

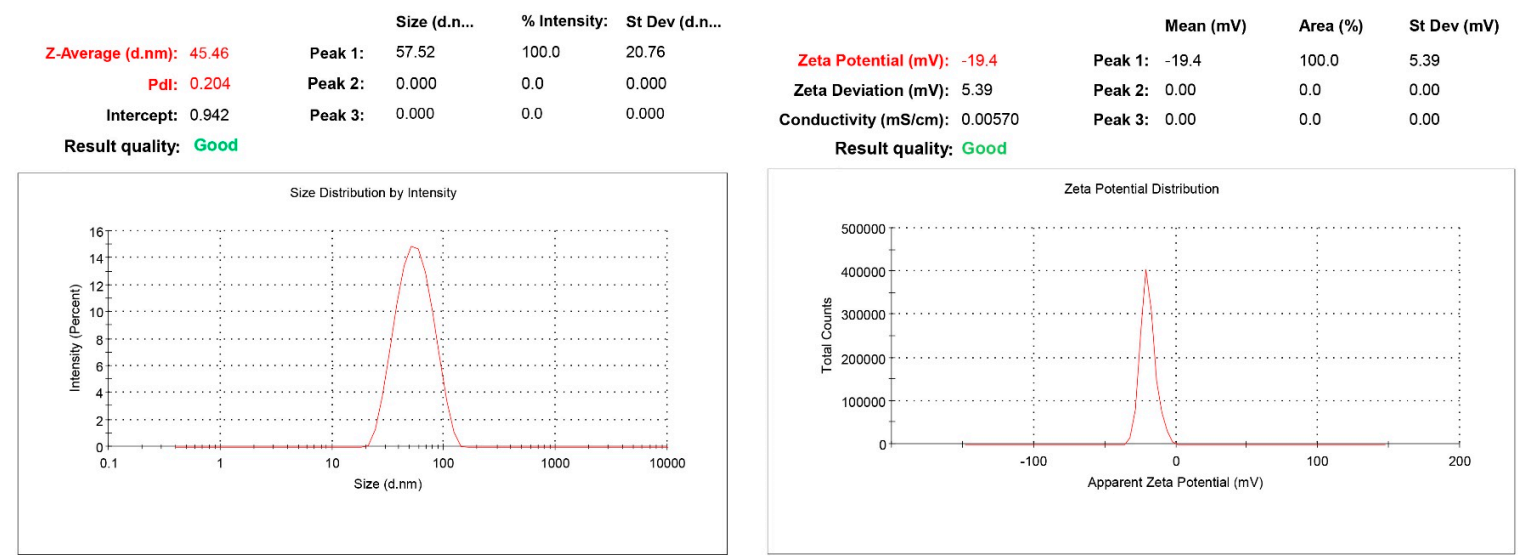
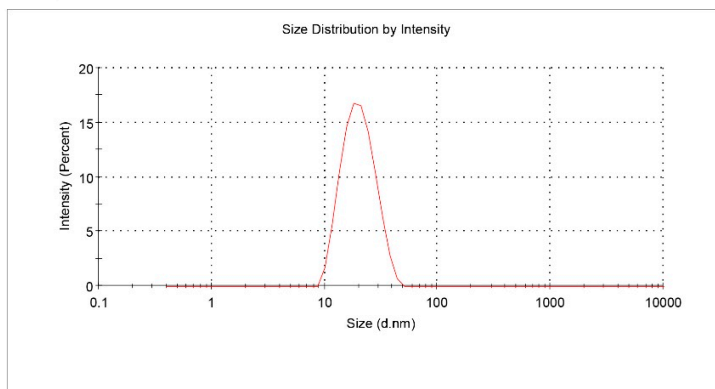


Figure S2: Droplet size (45.46 nm with Pdl 0.204) and zeta potential (-19.4 mV) of NE2

	Size (d.n...	% Intensity:	St Dev (d.n...
Z-Average (d.nm): 19.06	Peak 1: 20.87	100.0	6.746
Pdl: 0.125	Peak 2: 0.000	0.0	0.000
Intercept: 0.939	Peak 3: 0.000	0.0	0.000
Result quality: Good			



	Mean (mV)	Area (%)	St Dev (mV)
Zeta Potential (mV): -20.1	Peak 1: -20.1	100.0	4.01
Zeta Deviation (mV): 4.01	Peak 2: 0.00	0.0	0.00
Conductivity (mS/cm): 0.00994	Peak 3: 0.00	0.0	0.00
Result quality: Good			

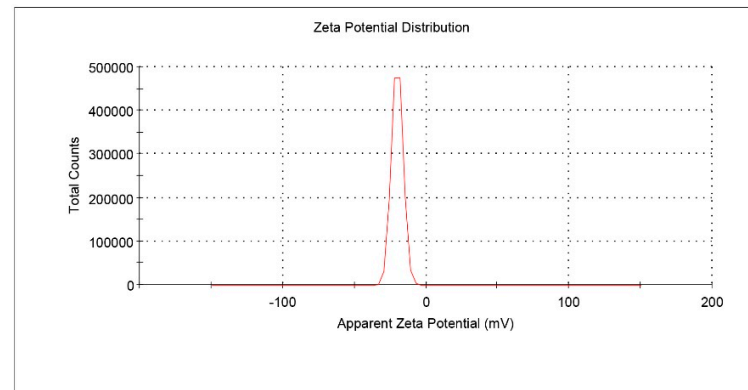
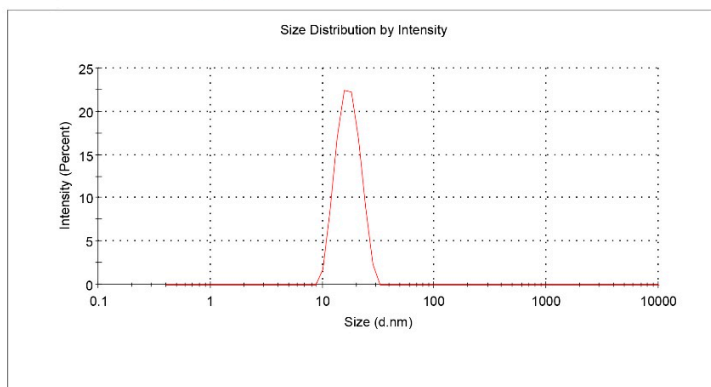


Figure S3: Droplet size (19.06 nm with Pdl 0.125) and zeta potential (-20.1 mV) of NE3

	Size (d.n...	% Intensity:	St Dev (d.n...
Z-Average (d.nm): 16.63	Peak 1: 17.39	100.0	4.046
Pdl: 0.016	Peak 2: 0.000	0.0	0.000
Intercept: 0.930	Peak 3: 0.000	0.0	0.000
Result quality: Good			



	Mean (mV)	Area (%)	St Dev (mV)
Zeta Potential (mV): -20.6	Peak 1: -20.6	100.0	5.03
Zeta Deviation (mV): 5.03	Peak 2: 0.00	0.0	0.00
Conductivity (mS/cm): 0.00565	Peak 3: 0.00	0.0	0.00
Result quality: Good			

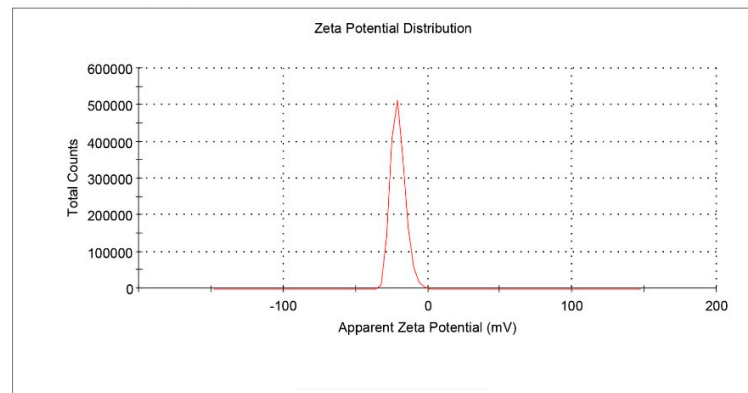


Figure S4: Droplet size (16.63 nm with Pdl 0.016) and zeta potential (-20.6 mV) of NE4