

(a)

(b)

(c)

Figure S1. Confocal imaging of blank NLC macrophages uptake. Red, blue, and green colours represent cell cytoplasm (Alexa Fluor™ 647 phalloidin), cell nuclei (DAPI) and NLC formulations (Coumarin 6), respectively: (a) blue channel (b) red channel and (c) green channel.



(a)

(b)

(c)

Figure S2. Confocal imaging of RFB-loaded NLC macrophages uptake. Red, blue, and green colours represent cell cytoplasm (Alexa Fluor™ 647 phalloidin), cell nuclei (DAPI) and NLC formulations (Coumarin 6), respectively: (a) blue channel (b) red channel and (c) green channel.

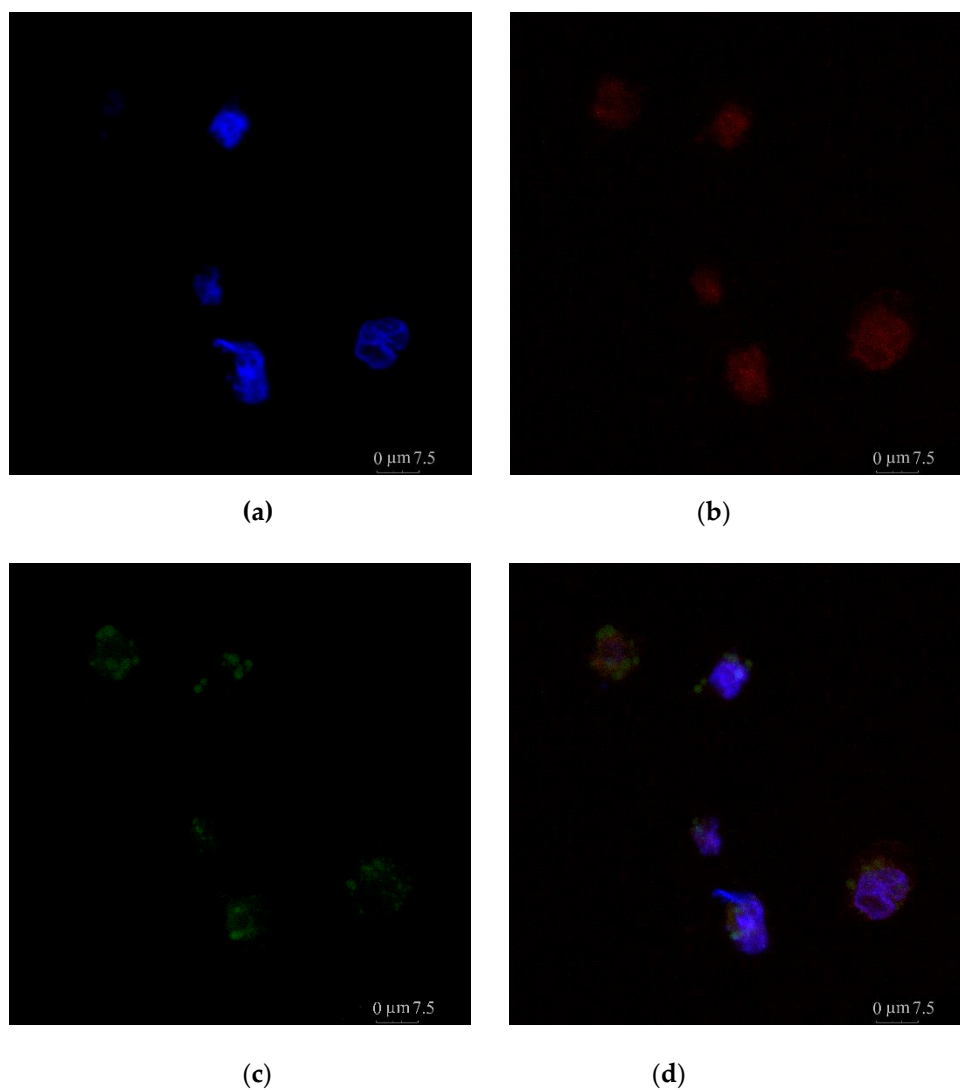


Figure S3. Confocal imaging of blank NLC uptake by a group of macrophages. Red, blue, and green colours represent cell cytoplasm (Alexa FluorTM 647 phalloidin), cell nuclei (DAPI) and NLC formulations (Coumarin 6), respectively: (a) blue channel (b) red channel, (c) green channel and (d) overlay of the three channels.