

Supplementary Figures

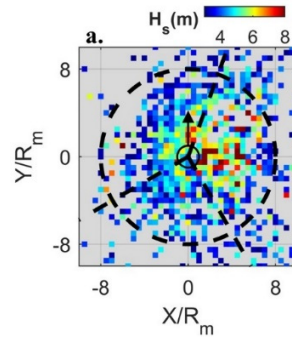


Figure S1. Summary of all TC generated H_s observations (greater than 3 m) in a storm-centric frame of reference with X and Y distances normalized by the radius of maximum winds (R_m). Color scale indicates average wave height observed in $1R_m \times 1R_m$ bins. The dashed circle is $R_m = 8$ with the small inner circle $R_m = 1$. The up arrow denotes the direction of the TCs forward translation.

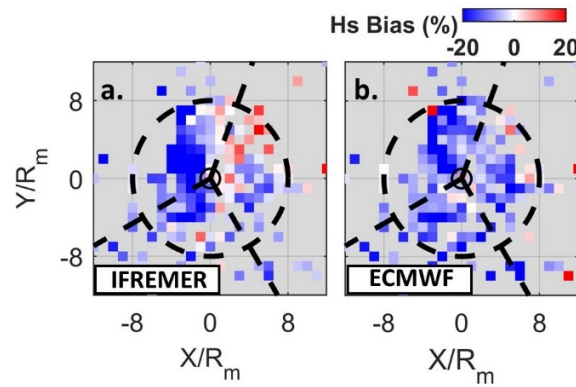


Figure S2. H_s bias at all buoy locations during Hurricane Sandy for (a) IFREMER and (b) ECMWF in a storm-centric frame of reference with distance from the eye normalized by the radius of maximum winds (R_m). Observations are binned into $1R_m \times 1R_m$ bins. The inner circle denotes $1R_m$ and outer dotted circle denotes $8R_m$. Direction of storm motion is up the page.

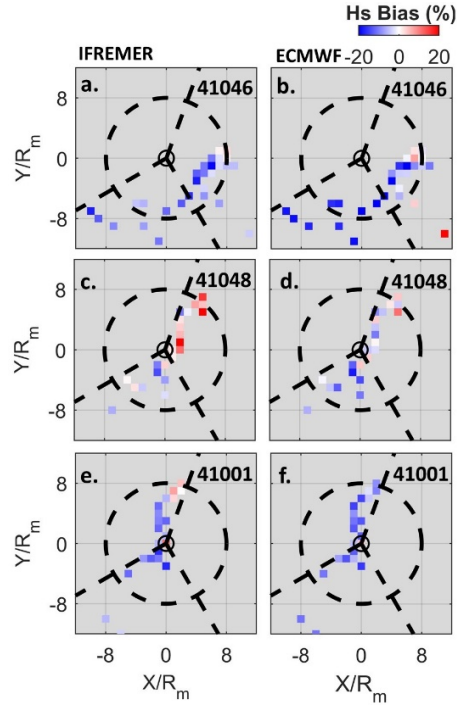


Figure S3. (a, c, e) IFREMER and (b, d, f) ECMWF Hs biases at buoys (a, b) 41046, (c, d) 41048, (e, f) 41002 during Hurricane Sandy. Plots are in a storm-centric frame of reference with distance from the eye normalized by the radius of maximum winds (R_m). Observations are binned into $1R_m \times 1R_m$ bins. The inner circle denotes $1R_m$ and outer dotted circle denotes $8R_m$. Direction of storm motion is up the page.