

Supplementary Materials: The following supporting information can be downloaded at: .

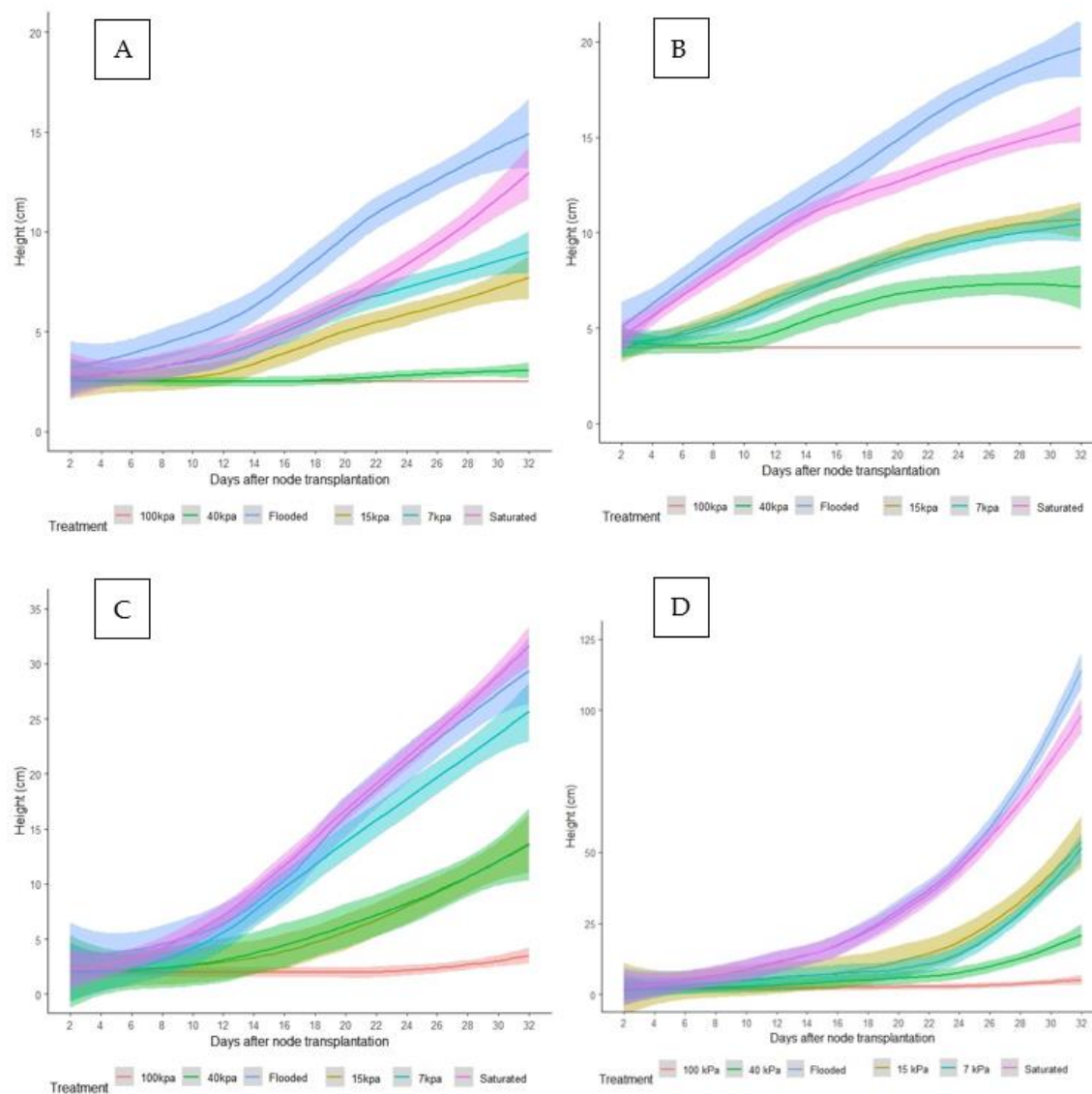


Figure S1. Plant length (cm) of *Leersia hexandra* (A and C) and *Luziola peruviana* (B and D) at different soil moisture levels in 2017/18 (A-B) and 2018/19 (C-D) growing seasons. Smoothing lines represent the observed values ($n=16$) with confidence intervals ($P \leq 0.05$). A confidence interval has been added around the linear trend.

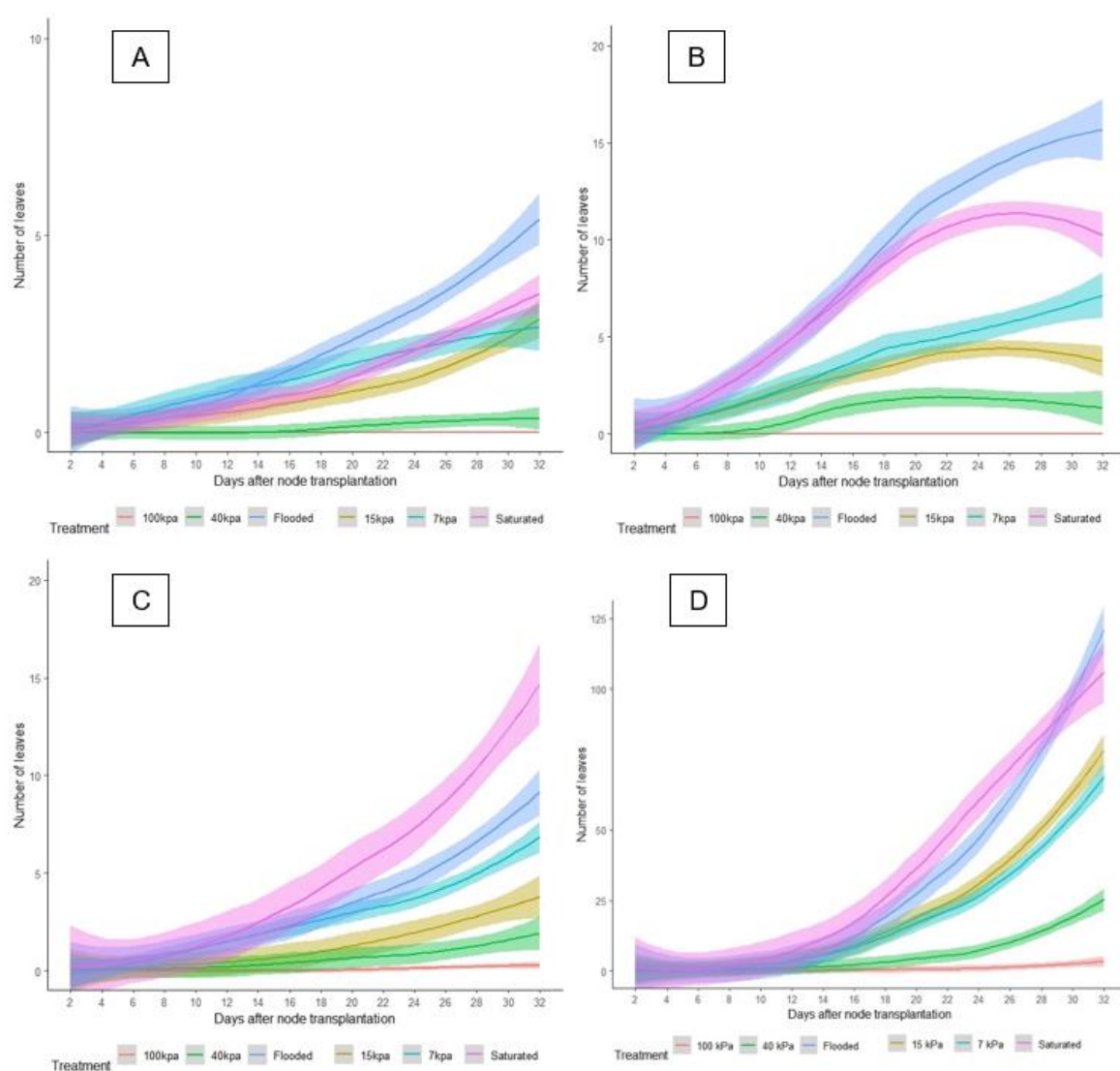


Figure S2. Number of leaves of *Leersia hexandra* (A and C) and *Luziola peruviana* (B and D) at different soil moisture levels in 2017/18 (A-B) and 2018/19 (C-D) growing seasons. Smoothing lines represent the observed values ($n=16$) with confidence intervals ($P \leq 0.05$). A confidence interval has been added around the linear trend.

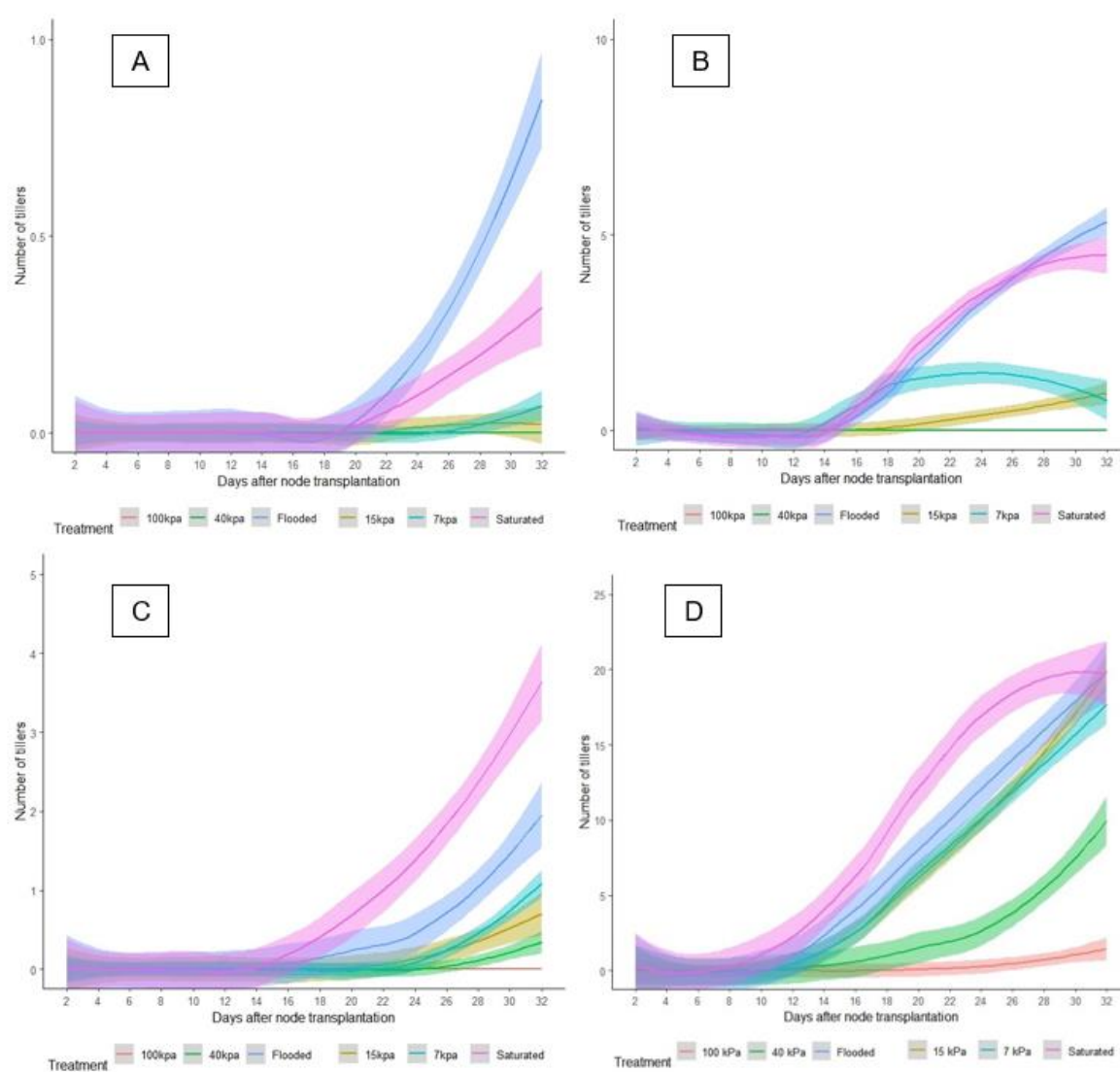


Figure S3. Number of tillers of *Leersia hexandra* (A and C) and *Luziola peruviana* (B and D) at different soil moisture levels in 2017/18 (A-B) and 2018/19 (C-D) growing seasons. Smoothing lines represent the observed values ($n=16$) with confidence intervals ($P \leq 0.05$). A confidence interval has been added around the linear trend.