

Figure S1. SEM images of cuticular wax structures of *Alocasia* (A), *Colocasia* (B), and *Xanthosoma* (C) at 500×, 1000×, and 2000×.

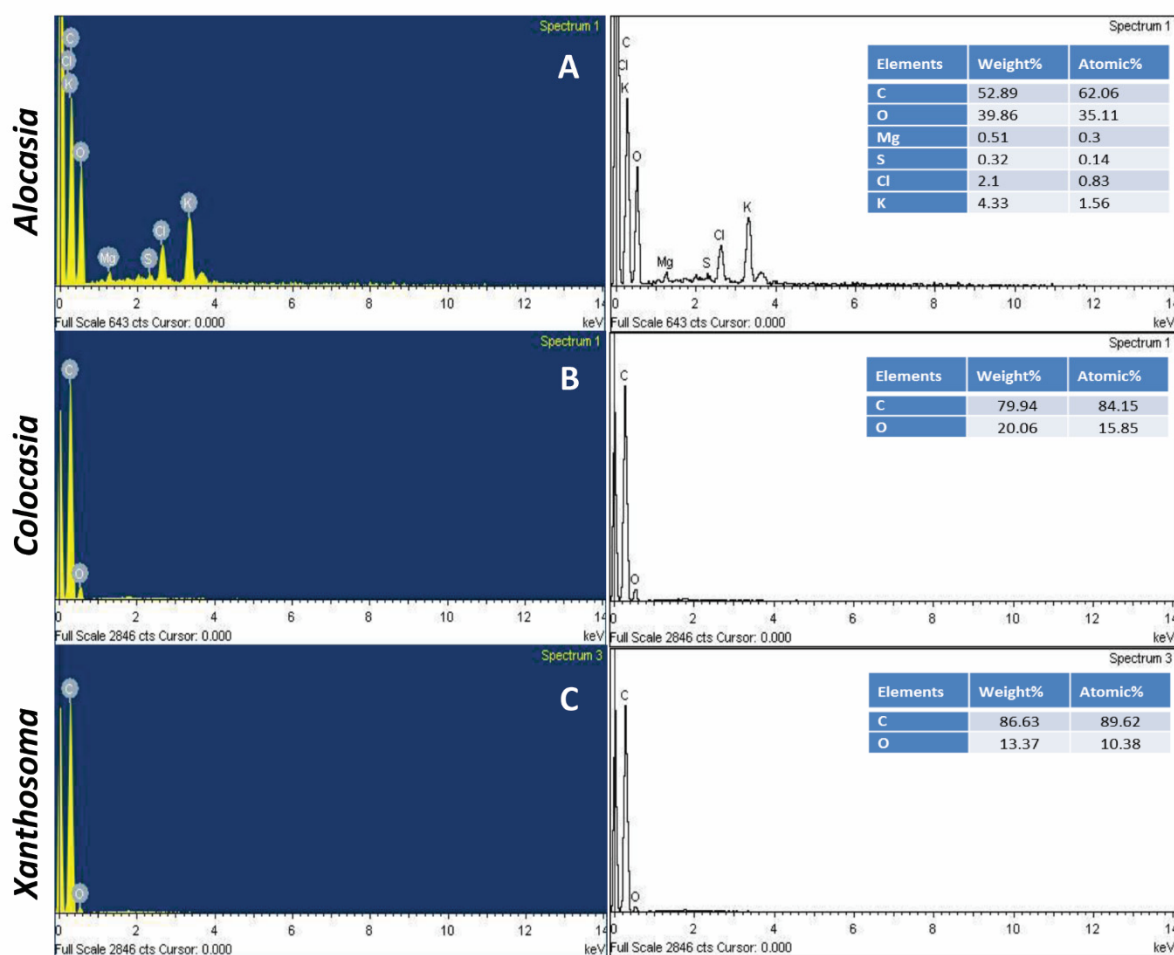


Figure S2. Elemental composition analysis of *Alocasia* (A), *Colocasia* (B), and *Xanthosoma* (C) cuticular wax using SEM-EDX

Table S1: Analysis of variance (mean sum of squares) for the leaf physiological properties of three aroid species, *Alocasia*, *Colocasia* and *Xanthosoma* as influenced by leaf cuticular wax in a complete randomized design (CRD)

Source	Mean sum of squares (MSS)	
	Species	Error
<i>df</i>	2	21
Wax content	248.59**	4.16
Sun protecting factor (SPF)	225.18**	42.15
Contact angle (CA)	8249.1**	29.8
Chlorophyll content (Ch)	306.38**	2.91
Chlorophyll stability index (CSI)	4000.6**	175.7
<i>l</i> * values	176.35**	4.30
<i>a</i> * values	50.00**	0.99
<i>b</i> * values	116.64**	5.11
Relative water content (RWC)	862.14**	65.53
Cell membrane injury (CMI)	0.239**	0.003

** indicates the level of significance at $P \leq 0.01$