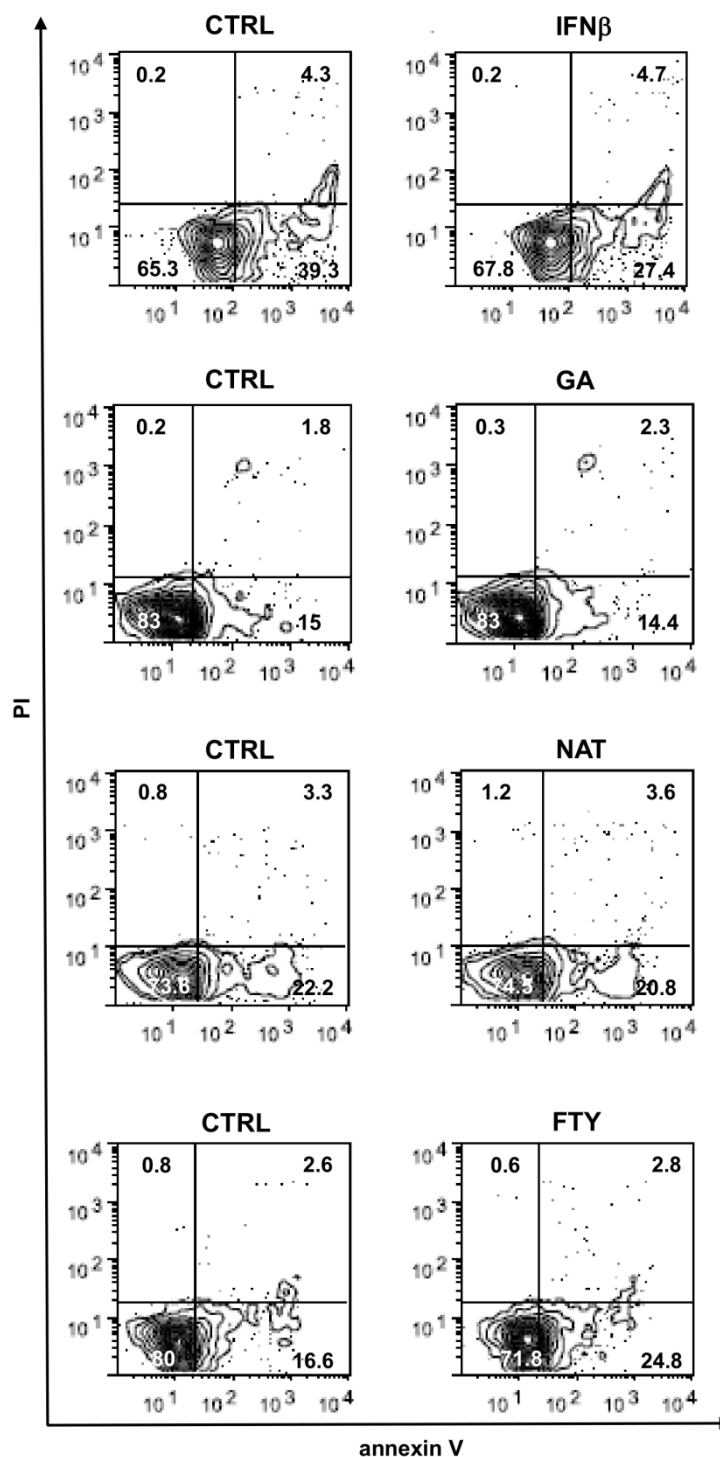


Supplemental Table 1. Effect of DMTs on HS PMN intracellular killing activity of *K. pneumoniae*.

Mean Survival Index \pm SEM (% of initial microbial population killed by PMNs)						
Time (min)	Controls	First-line treatment		Second-line treatment		Statistical analysis
		INF β -1b	GA	NAT	FTY	Mann-Whitney test
	A	B	C	D	E	
30	1.51 \pm 0.02 (49%)	1.87 \pm 0.01 (13%)	1.77 \pm 0.06 (23%)	1.69 \pm 0.05 (31%)	>2 (0%)	<i>P</i> = 0.0003 A <i>vs.</i> B <i>P</i> = 0.0010 A <i>vs.</i> C <i>P</i> = 0.003 A <i>vs.</i> D <i>P</i> < 0.0001 A <i>vs.</i> E
60	1.74 \pm 0.04 (26%)	>2 (0%)	1.94 \pm 0.04 (6%)	1.96 \pm 0.05 (4%)	>2 (0%)	<i>P</i> = 0.0003 A <i>vs.</i> B <i>P</i> = 0.04 A <i>vs.</i> C <i>P</i> = 0.004 A <i>vs.</i> D <i>P</i> < 0.0001 A <i>vs.</i> E
90	>2 (0%)	>2 (0%)	>2 (0%)	>2 (0%)	>2 (0%)	n.s.

P < 0.05 was deemed statistically significant

Abbreviations: DMTs, disease-modifying therapies; HS, healthy subject; PMNs, polymorphonuclear leukocytes; INF β -1b, interferon β -1b; GA, glatiramer acetate; NAT, natalizumab; FTY, fingolimod



Supplemental Figure 1. Effect of DMTs on HS PMN apoptosis. Representative dot plots of untreated (left panels) or DMTs treated PMNs (right panels). Viable cells are presented in the lower left quadrant, early apoptotic cells in the lower right quadrant, late apoptotic cells in the upper right quadrant and unviable cells in the upper left quadrant.

