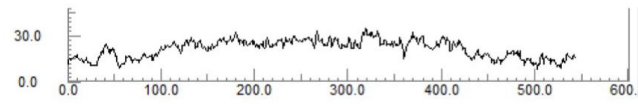
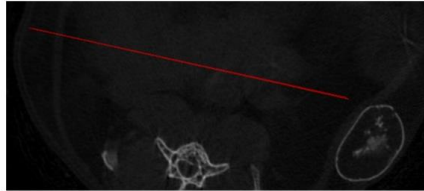
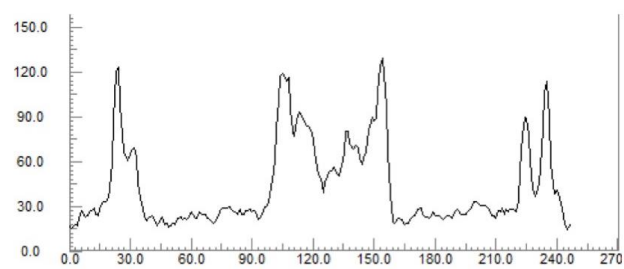
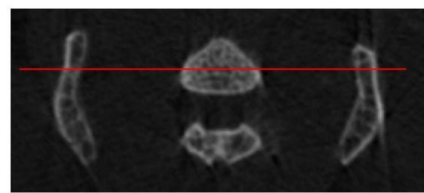


Supplementary Figures

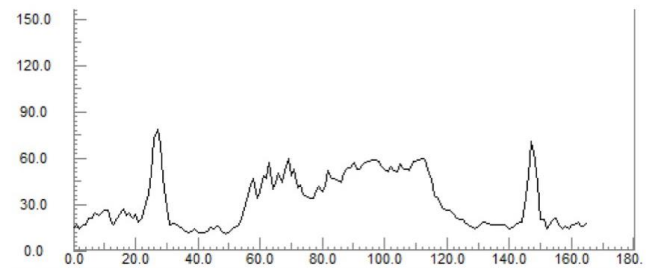
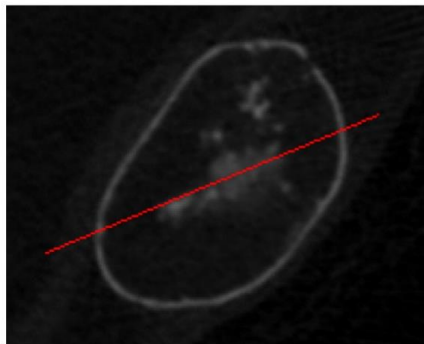
a



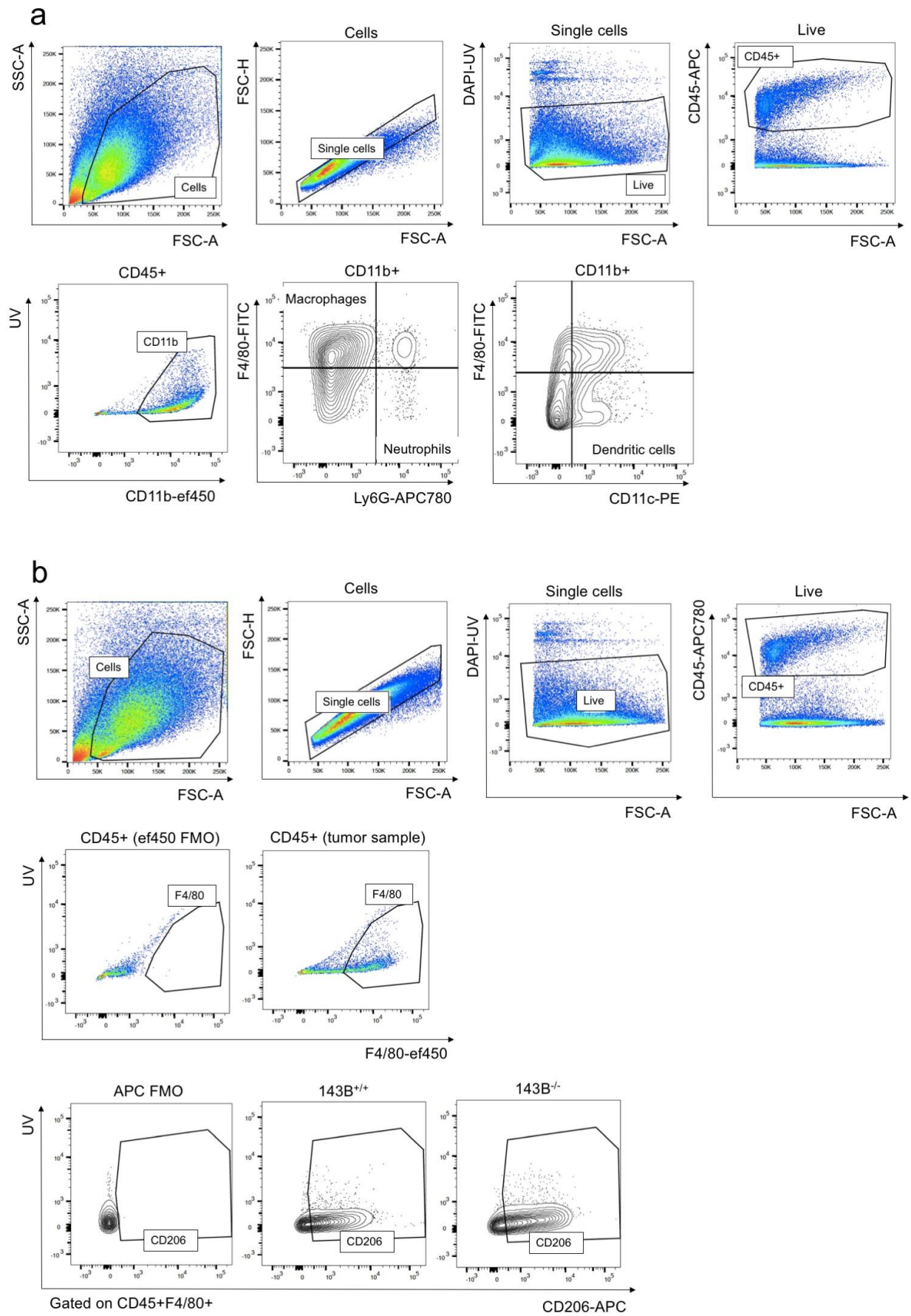
b



c



Supplementary Figure 1. Micro CT scans of the mouse body sections selecting (a) soft tissue, (b) bone tissue and (c) humanized bone niche control sample.



Supplementary Figure 2. Gating strategies for flow cytometry analyses of (a) innate immune system cell populations and (b) CD206⁺ macrophages.