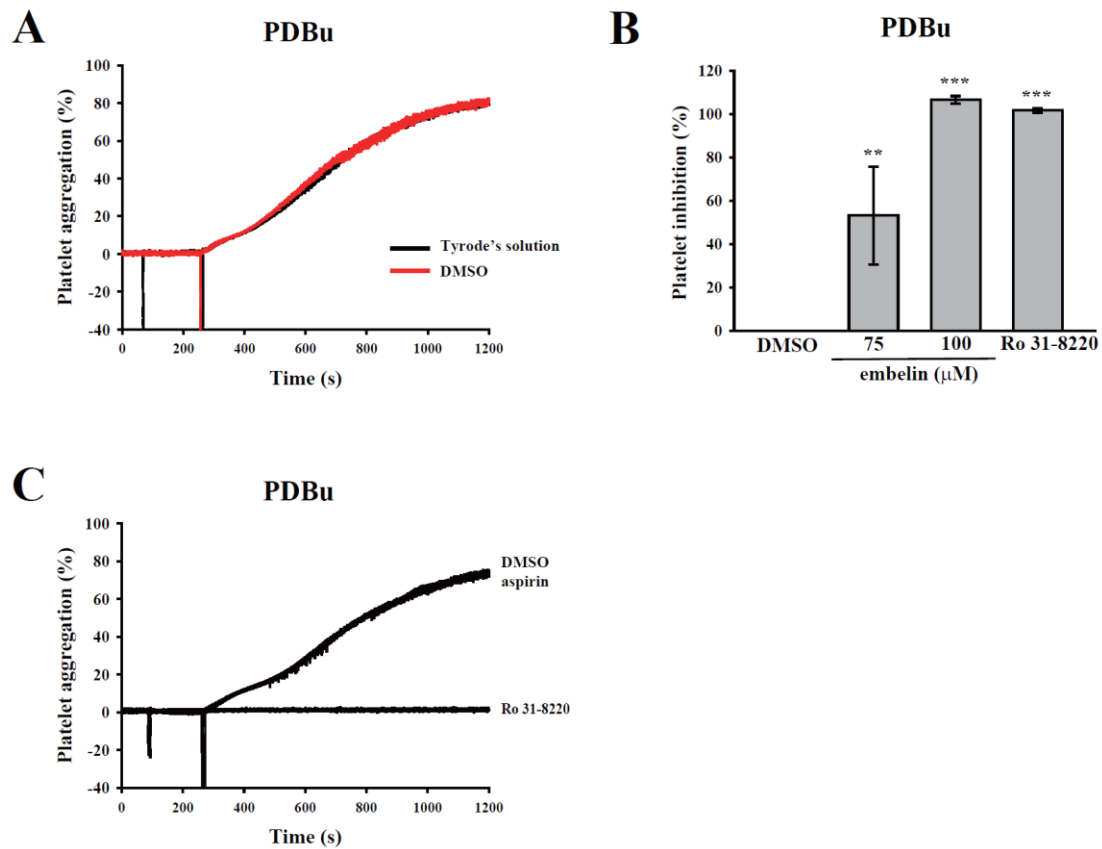


**Supplemental Figure 1.** Human washed platelets ( $3.6 \times 10^8$  cells/mL) were pretreated with Tyrode's solution (control) or dimethyl sulfoxide (DMSO) (solvent control), followed by stimulation with (A) collagen (1  $\mu$ g/mL), (B) convulxin (10 ng/mL), (C) thrombin (0.02 U/mL), and (D) U46619 (1  $\mu$ M) to induce platelet aggregation.



**Supplemental Figure 2.** Human washed platelets ( $3.6 \times 10^8$  cells/mL) were pretreated with Tyrode's solution (control), DMSO (solvent control), embelin (75 and 100  $\mu$ M), the PKC inhibitor Ro 31-8220 (2  $\mu$ M), or aspirin (100  $\mu$ M), followed by the stimulation of phorbol 12,13-dibutyrate (PDBu) (150 nM) to induce platelet aggregation. Data (**B**) are presented as means  $\pm$  standard error of the mean (SEM) ( $n = 3$ ). \*\* $P < 0.01$  and \*\*\* $P < 0.001$ , compared with the DMSO (solvent control) group.