

Supplemental material:

Table S1. Categorisation of post-COVID-19 symptoms

Table S2. Number of subjects interviewed and timing of the interviews in adults and children

Table S3. Frequency of post-COVID-19 symptoms in categories, by sex and age classes, *males, n (%) / females, n (%)*

Table S4. Vaccination status in adults and children analysed, at the time of the last survey, *n (%)*

Figure S1: Kaplan-Meier estimates of cumulative reported frequency of post-COVID-19 symptoms in the whole cohort, by sex. Numbers in parentheses represent the number of symptoms that were reported within each time interval, by sex.

Figure S2: Kaplan-Meier estimates of cumulative reported frequency of post-COVID-19 symptoms in the whole cohort, by age class. Numbers in parentheses represent the number of symptoms that were reported within each time interval, by age class.

Figure S3: Kaplan-Meier estimates of cumulative reported frequency of post-COVID-19 symptoms, by sex, (A) in subjects aged 0-5y, (B) 6-11y, (C) 12-17y, (D) 18-50y, (E) 51-64y and (F) 65+y. Numbers in parentheses represent the number of symptoms that were reported within each time interval, by sex. The estimate of the hazard ratio (HR) was based on a Cox proportional hazards regression model, adjusted for age.

Figure S4: Forest plot of the risk estimate (hazard ratio, HR) of post-COVID-19 symptoms for females vs. males in each symptom category, stratified by age group, in pediatric outpatients. HRs are adjusted for age. Abbreviations: P-inter., p-value for the sex*age interaction term in the Cox model. Note: HR for sensory symptoms in 0-5y group was not estimable because of lack of events; data are from all the surveys collected.

Figure S5: Forest plot of the risk estimate (hazard ratio, HR) of post-COVID-19 symptoms for females vs. males in each symptom category, stratified by age group, in hospitalized adults. HRs are adjusted for age. Abbreviations: P-inter., p-value for the sex*age interaction term in the Cox model; data are from all the surveys collected.

Figure S6: Forest plot of the risk estimate (hazard ratio, HR) of post-COVID-19 symptoms for females vs. males in each symptom category, stratified by age group, excluding data from the 1st survey of pediatric outpatients. HRs are adjusted for age. Abbreviations: P-inter., p-value for the sex*age interaction term in the Cox model. Note: HR for sensory symptoms in 0-5y group was not estimable because of lack of events.

Figure S7: Forest plot of the risk estimate (hazard ratio, HR) of post-COVID-19 symptoms for females vs. males in each symptom category, stratified by age group, in pediatric outpatients, excluding data from the 1st survey. HRs are adjusted for age. Abbreviations: P-inter., p-value for the sex*age interaction term in the Cox model. Note: HR for sensory symptoms in 0-5y group was not estimable because of lack of events.

Table S1. Categorisation of post-COVID-19 symptoms.

Category	Symptoms
Musculoskeletal	Joint pain or swelling, Persistent muscle pain, Weakness arms/legs or muscle weakness.
Cardiovascular	Palpitations (heart racing), Variations in heart rate (tachycardia or bradycardia).
Respiratory	Shortness of breath/ breathlessness, Pain on breathing, Persistent cough, Chest pain, Nasal congestion/rhinorrea.
Neurological and cognitive dysfunction	Cannot fully move or control movement, Problems with balance, Tremor/shakiness, Seizures, Tingling feeling/“pins and needles”, Confusion/lack of concentration, Problems speaking or communicating, Fainting/ blackouts, Dizziness/ light headedness, Problems seeing/blurred vision, Headache, problems swallowing or chewing, ringing in ears, can’t feel one side of body/face.
Dermatological	Hair loss, Skin rash, Lumpy lesions on toes,
Gastrointestinal	Constipation, Diarrhoea, Stomach/ abdominal pain, Vomiting
Sensory	Loss of smell, Loss of taste
Sleep	Problems sleeping, Hypersomnia (children only)
Fatigue	Fatigue
Poor appetite/Weight loss	Poor appetite, Weight loss (adults only)

Table S2. Number of subjects interviewed and timing of the interviews in adults and children

	No. subjects surveyed	time from discharge, months, median (IQR)
Adults (n=518):		
1 st survey (expected 1-3 mos after hospital discharge)	450	3.3 (2.4-4.3)
2 nd survey (expected 3 mos after 1 st survey)	362	6.9 (5.9-8.4)
3 rd survey (expected 6 mos after 1 st survey)	227	9.9 (8.7-11.4)
4 th survey (expected 9 mos after 1 st survey)	125	12.4 (11.6-13.2)
5 th survey (expected 12 mos after 1 st survey)	81	15.3 (14.6-16.3)
Children (n=1,010):		
1 st survey (expected 1-3 mos after 1 st COVID symptom)	905	time from 1 st symptom, months, median (IQR) 2.4 (2.0-2.9)
2 nd survey (expected 3-6 mos after 1 st COVID symptom)	559	5.4 (5.0-5.9)
3 rd survey (expected 6-12 mos after 1 st COVID symptom)	328	8.4 (8.0-8.8)
Abbreviations: IQR, interquartile range		

Table S3. Frequency of post-COVID-19 symptoms in categories, by sex and age classes, *males, n (%) / females, n (%)**

	0-5y (n=128/102)	6-11y (n=282/249)	12-50y (n=128/151)	>50y (n=201/136)	All children (n=482/443)	All adults (n=257/195)
Musculoskeletal pain	3 (2.3) / 2 (2.0) p>0.99	33 (11.7) / 25 (10.0) p=0.579	41 (32.0) / 55 (36.4) p=0.451	121 (60.2) / 89 (65.4) p=0.360	44 (9.1) / 40 (9.0) p>0.99	154 (59.9) / 131 (67.2) p=0.117
Cardiovascular	2 (1.6) / 1 (1.0) p>0.99	10 (3.6) / 9 (3.6) p>0.99	20 (15.6) / 49 (32.5) p=0.001	49 (24.4) / 50 (36.8) p=0.015	14 (2.9) / 26 (5.9) p=0.034	67 (26.1) / 83 (42.6) p<0.001
Respiratory	57 (44.5) / 39 (38.2) p=0.349	102 (36.2) / 84 (33.7) p=0.585	47 (36.7) / 65 (43.1) p=0.327	110 (54.7) / 90 (66.2) p=0.042	174 (36.1) / 155 (35.0) p=0.732	142 (55.3) / 123 (63.1) p=0.102
Neurological and cognitive dysfunction	11 (8.6) / 11 (10.8) p=0.654	77 (27.3) / 89 (35.7) p=0.039	53 (41.4) / 88 (58.3) p=0.006	125 (62.2) / 98 (72.1) p=0.062	107 (22.2) / 145 (32.7) p<0.001	159 (61.9) / 141 (72.3) p=0.021
Dermatological	14 (10.9) / 6 (5.9) p=0.240	18 (6.4) / 17 (6.8) p=0.862	16 (12.5) / 19 (12.6) p>0.99	33 (16.4) / 39 (28.7) p=0.010	35 (7.3) / 28 (6.3) p=0.603	46 (17.9) / 53 (27.2) p=0.022
Gastrointestinal	26 (20.3) / 18 (17.7) p=0.736	57 (20.2) / 50 (20.1) p>0.99	26 (20.3) / 53 (35.1) p=0.008	68 (33.8) / 62 (45.6) p=0.031	92 (19.1) / 86 (19.4) p=0.934	85 (33.1) / 97 (49.7) p<0.001
Sensory	2 (1.6) / 0 (-) p=0.504	3 (1.1) / 4 (1.6) p=0.711	10 (7.8) / 18 (11.9) p=0.319	30 (14.9) / 21 (15.4) p>0.99	9 (1.9) / 10 (2.3) p=817	36 (14.0) / 33 (16.9) p=0.429
Sleep	25 (19.5) / 10 (9.8) p=0.044	43 (15.3) / 38 (15.3) p>0.99	30 (23.4) / 60 (39.7) p=0.005	82 (40.8) / 72 (52.9) p=0.034	81 (16.8) / 80 (18.1) p=0.664	99 (38.5) / 100 (51.3) p=0.007
Fatigue	10 (7.8) / 4 (3.9) p=0.274	62 (22.0) / 57 (22.9) p=0.835	51 (39.8) / 76 (50.3) p=0.092	120 (59.7) / 96 (70.6) p=0.049	88 (18.3) / 98 (22.1) p=0.163	155 (60.3) / 135 (69.2) p=0.060
Poor appetite/Weight loss	23 (18.0) / 12 (11.8) p=0.203	34 (12.1) / 39 (15.7) p=0.256	19 (14.8) / 27 (17.9) p=0.521	37 (18.4) / 40 (29.4) p=0.024	65 (13.5) / 68 (15.4) p=0.453	48 (18.7) / 50 (25.6) p=0.084
<i>Any symptom (at least 1)</i>	83 (64.8) / 53 (52.0) p=0.059	173 (61.4) / 166 (66.7) p=0.207	83 (64.8) / 114 (75.5) p=0.065	166 (82.6) / 120 (88.2) p=0.167	293 (60.8) / 282 (63.7) p=0.378	212 (82.5) / 171 (87.7) p=0.147

Abbreviations: y, years old. *Fisher exact p-values are shown.

Table S4. COVID-19 vaccination status in adults and children analysed, at the time of the last survey, n (%)

	Hospitalized adults (n=452)	Pediatric outpatients (n=925)
Yes (at least 1 dose)	360 (79.7)	198 (21.4)
2 doses	244 (54.0)	106 (11.5)
3 doses ("booster")	130 (28.8)	26 (2.8)
No	88 (19.5)	725 (78.4)
"Don't know" or not compiled	4 (0.9)	2 (0.2)

Supplementary figures:

Figure S1: Kaplan-Meier estimates of cumulative reported frequency of post-COVID-19 symptoms in the whole cohort, by sex. Numbers in parentheses represent the number of symptoms that were reported within each time interval, by sex.

Figure S2: Kaplan-Meier estimates of cumulative reported frequency of post-COVID-19 symptoms in the whole cohort, by age class. Numbers in parentheses represent the number of symptoms that were reported within each time interval, by age class.

Figure S3: Kaplan-Meier estimates of cumulative reported frequency of post-COVID-19 symptoms, by sex, (A) in subjects aged 0-5y, (B) 6-11y, (C) 12-17y, (D) 18-50y, (E) 51-64y and (F) 65+y. Numbers in parentheses represent the number of symptoms that were reported within each time interval, by sex. The estimate of the hazard ratio (HR) was based on a Cox proportional hazards regression model, adjusted for age.

Figure S4: Forest plot of the risk estimate (hazard ratio, HR) of post-COVID-19 symptoms for females vs. males in each symptom category, stratified by age group, in pediatric outpatients. HRs are adjusted for age. Abbreviations: P-inter., p-value for the sex*age interaction term in the Cox model. Note: HR for sensory symptoms in 0-5y group was not estimable because of lack of events.

Figure S5: Forest plot of the risk estimate (hazard ratio, HR) of post-COVID-19 symptoms for females vs. males in each symptom category, stratified by age group, in hospitalized adults patients. HRs are adjusted for age. Abbreviations: P-inter., p-value for the sex*age interaction term in the Cox model.

Figure S6: Forest plot of the risk estimate (hazard ratio, HR) of post-COVID-19 symptoms for females vs. males in each symptom category, stratified by age group, excluding data from the 1st survey of pediatric outpatients. HRs are adjusted for age. Abbreviations: P-inter., p-value for the sex*age interaction term in the Cox model. Note: HR for sensory symptoms in 0-5y group was not estimable because of lack of events.

Figure S7: Forest plot of the risk estimate (hazard ratio, HR) of post-COVID-19 symptoms for females vs. males in each symptom category, stratified by age group, in pediatric

outpatients, excluding data from the 1st survey. HRs are adjusted for age. Abbreviations: P-inter., p-value for the sex*age interaction term in the Cox model. Note: HR for sensory symptoms in 0-5y group was not estimable because of lack of events.

Figure S1

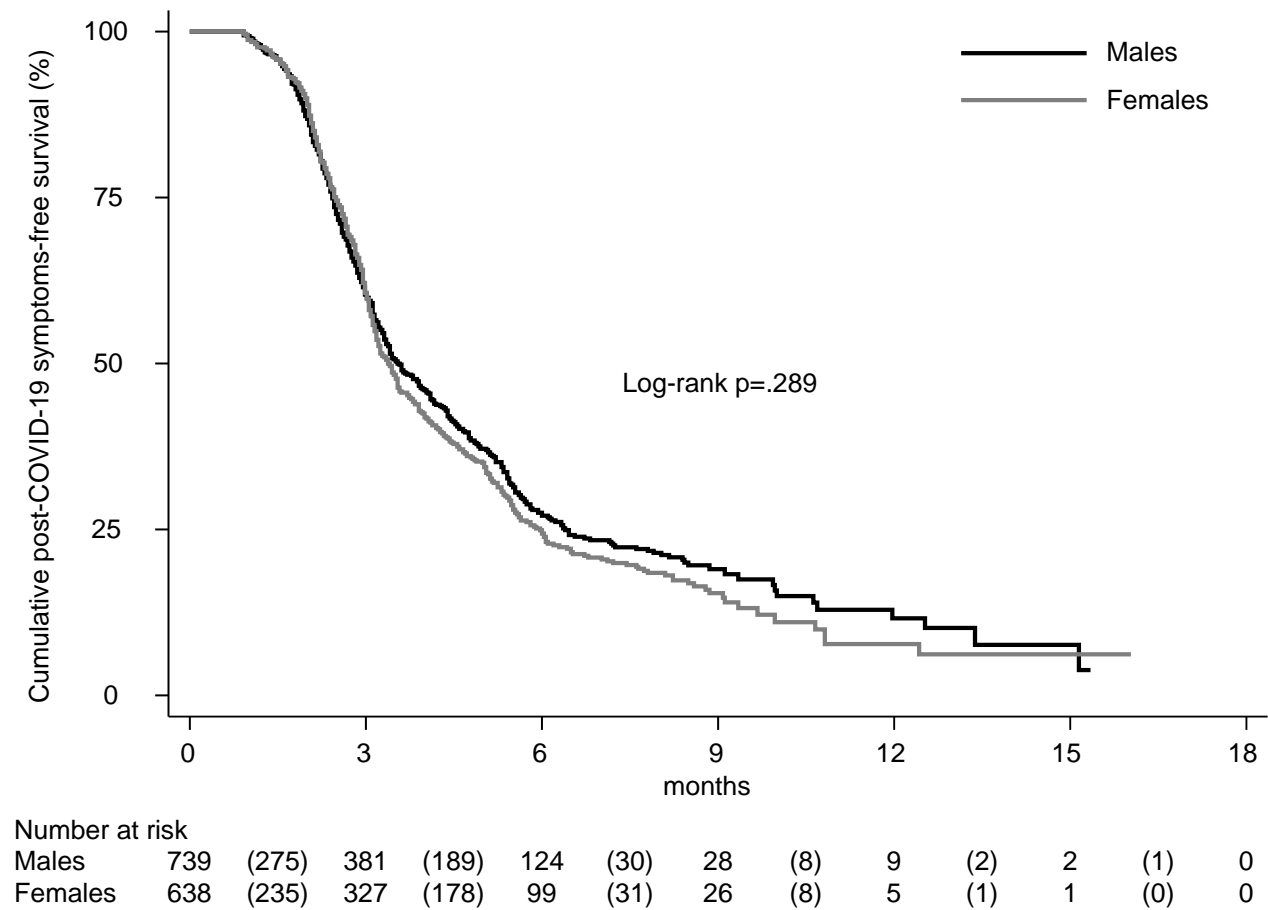


Figure S2

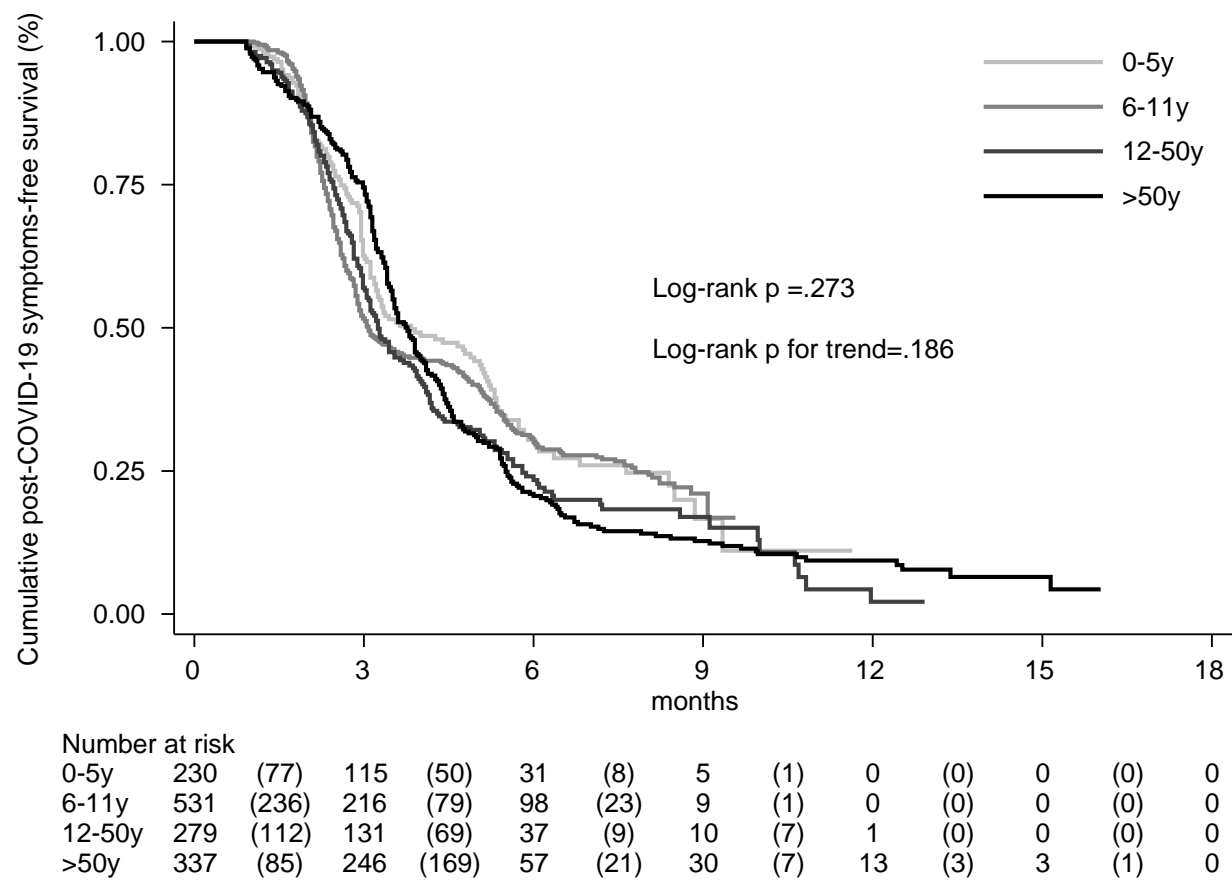


Figure S3

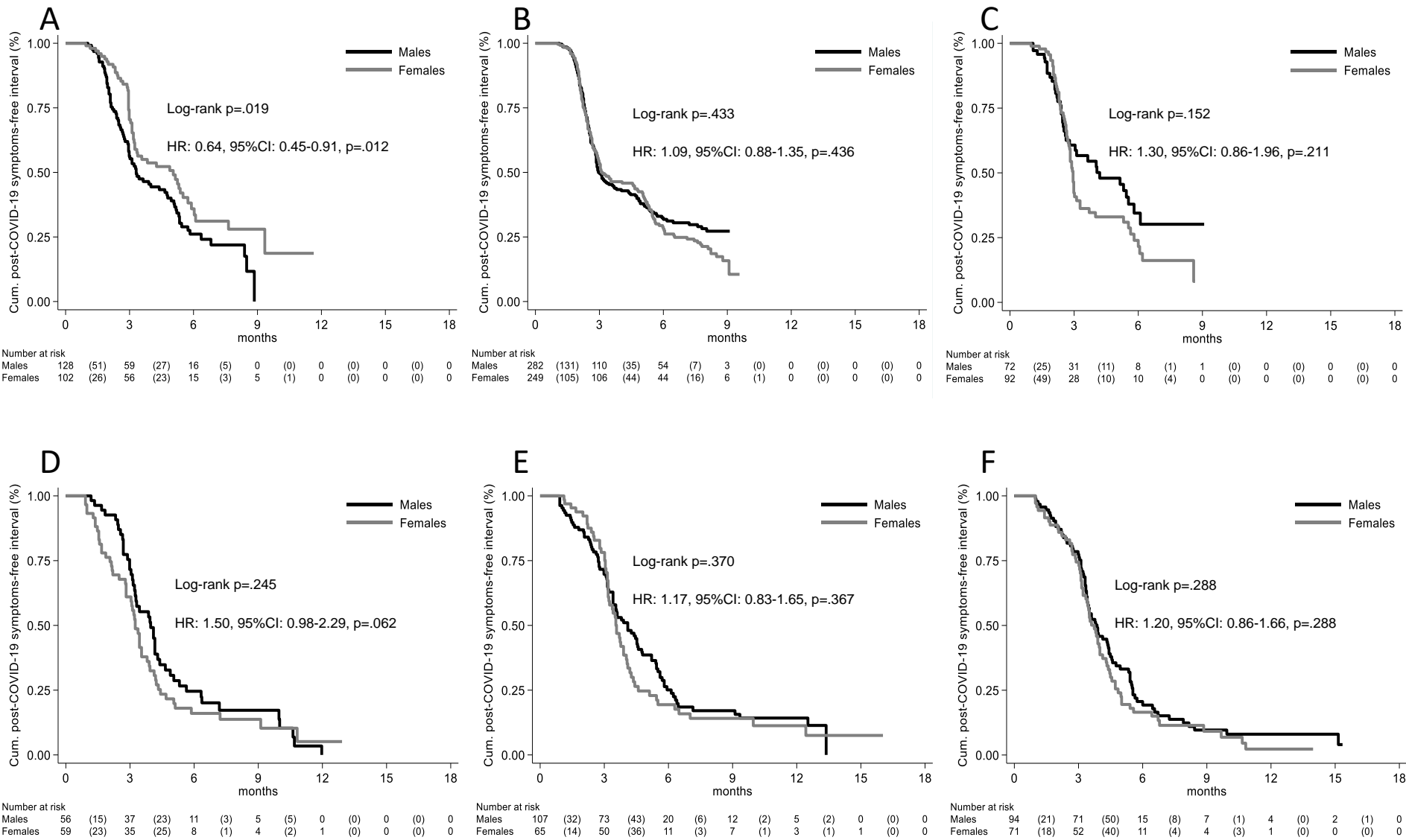


Figure S4

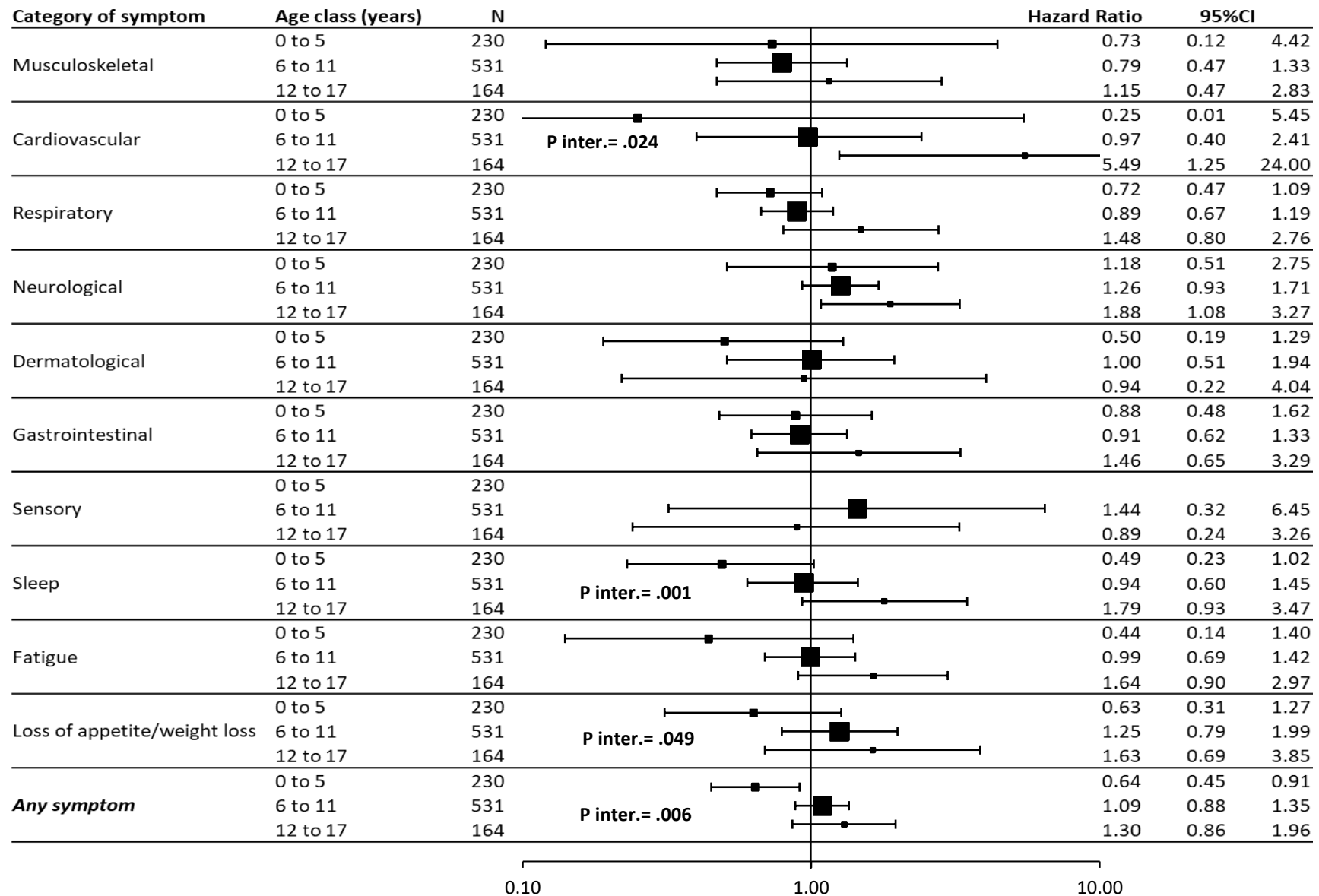


Figure S5

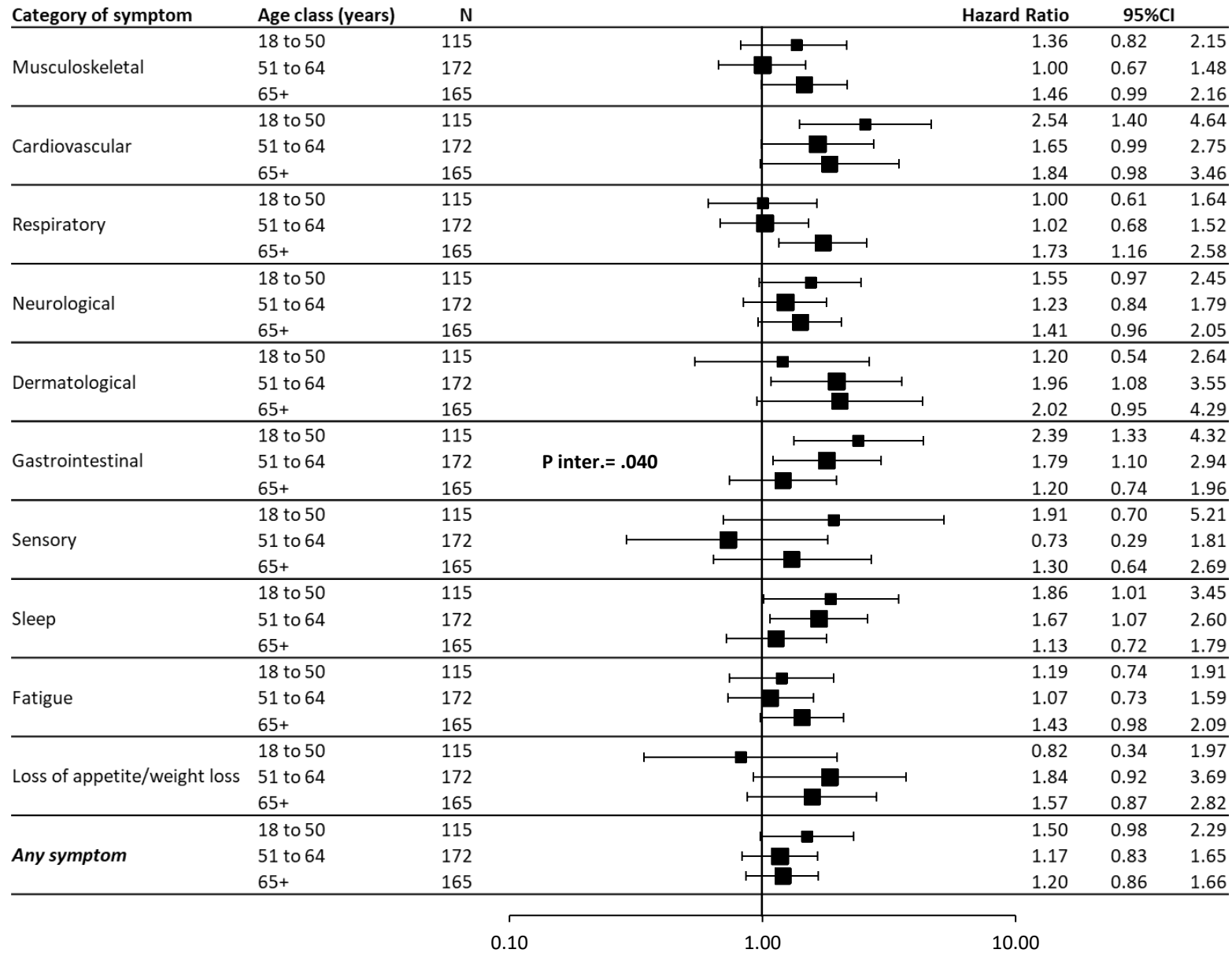


Figure S6

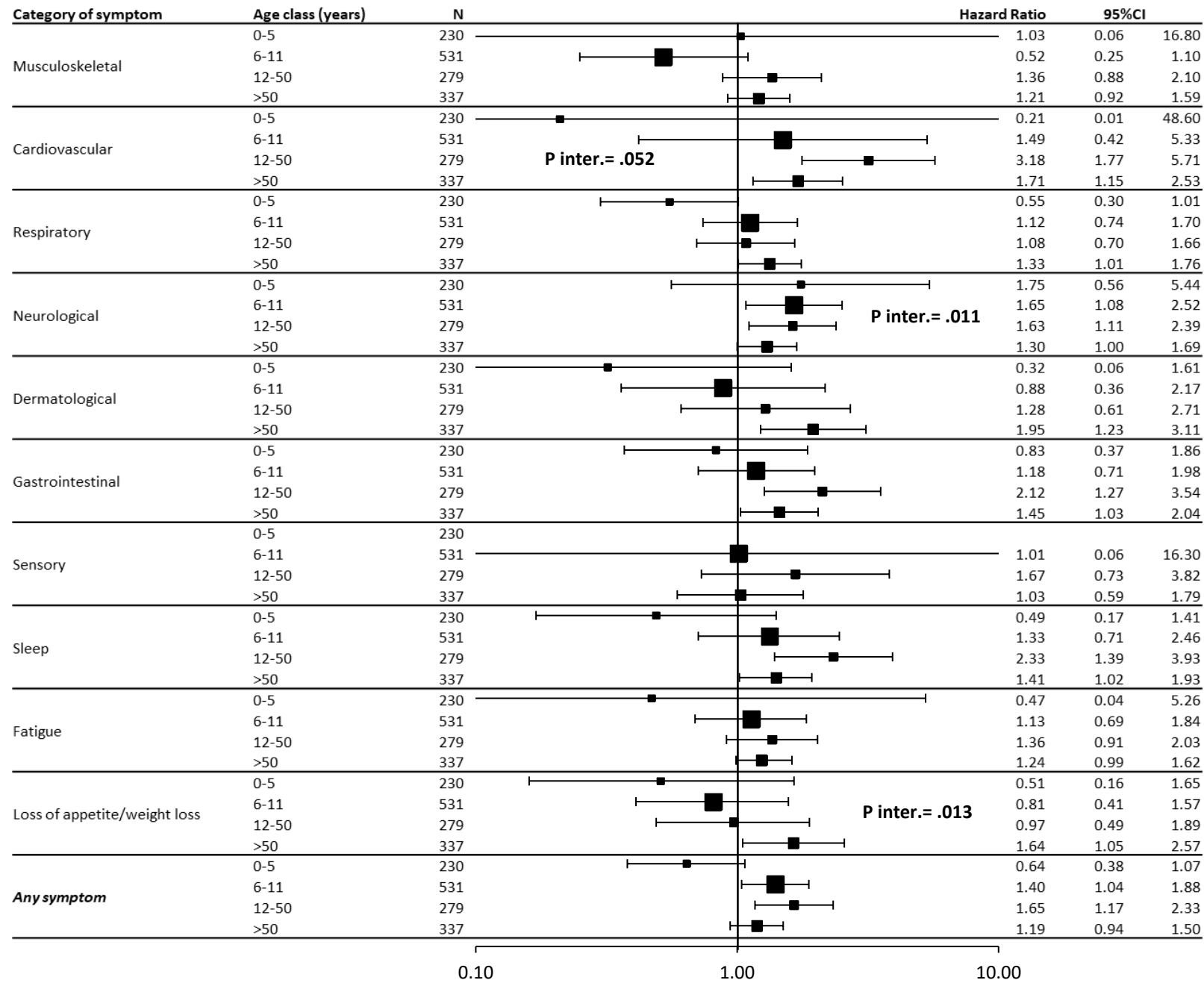


Figure S7

