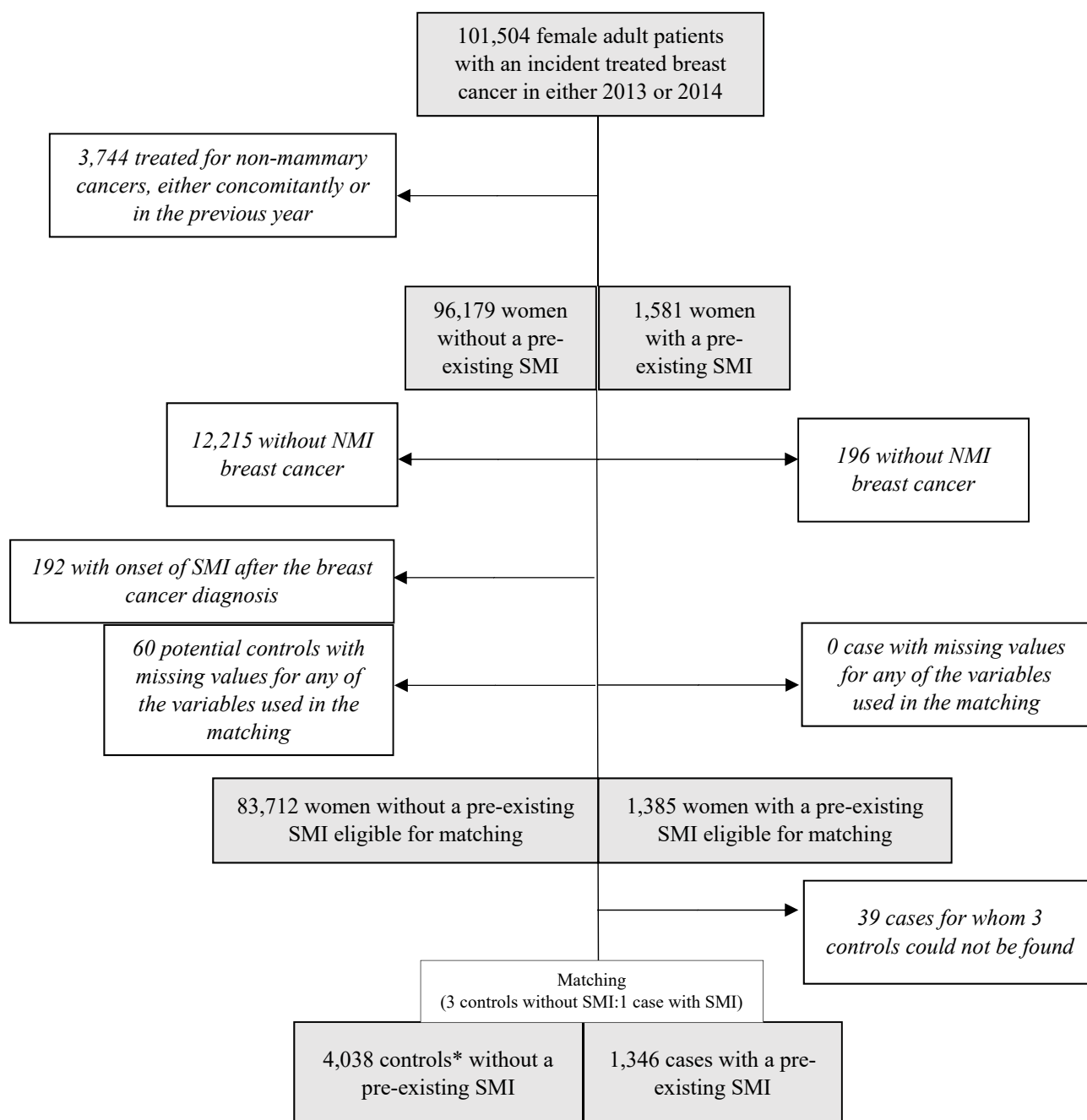


Figure S1. Flowchart for the selection of the study population



Note: *4,000 individuals selected through matching with replacement (certain matched multiple times to obtain 4,038 controls)

Table S1. Characteristics of matched and unmatched SMI patients

	Matched women with SMI (n=1,346)	Unmatched women with SMI (n=39)
Characteristic	Mean (\pm SD) or n (%)	
Demographics		
Age	61.08 (\pm 11.70)	53.82 (\pm 18.14)
Socio-economic characteristics at the individual level		
Inclusion in the scheme covering healthcare costs for low-income groups (CMU-C)	52 (3.86)	5 (12.82)
Inclusion in the scheme providing financial assistance for the purchase of supplementary health insurance (ACS)	155 (11.52)	6 (15.38)
Characteristics of the living environment		
Quintile of community-level deprivation index (FDep)- using bounds calculated at the national level		
1st quintile (least deprived)	249 (18.50)	1 (2.56)
2nd quintile	229 (17.01)	4 (10.26)
3rd quintile	333 (24.74)	10 (25.64)
4th quintile	263 (19.54)	12 (30.77)
5th quintile (most deprived)	228 (16.94)	9 (23.08)
<i>Missing values</i>	44 (3.27)	2 (5.13)
Residency in an overseas territory	23 (1.71)	2 (5.13)
Clinical characteristics		
Non-metastatic invasive breast cancer with lymph node involvement	263 (19.54)	30 (76.92)
Non-metastatic invasive breast cancer with no lymph node involvement	1,083 (80.46)	8 (20.51)
Comorbidity index	0.58 (\pm 0.97)	0.37 (\pm 0.67)