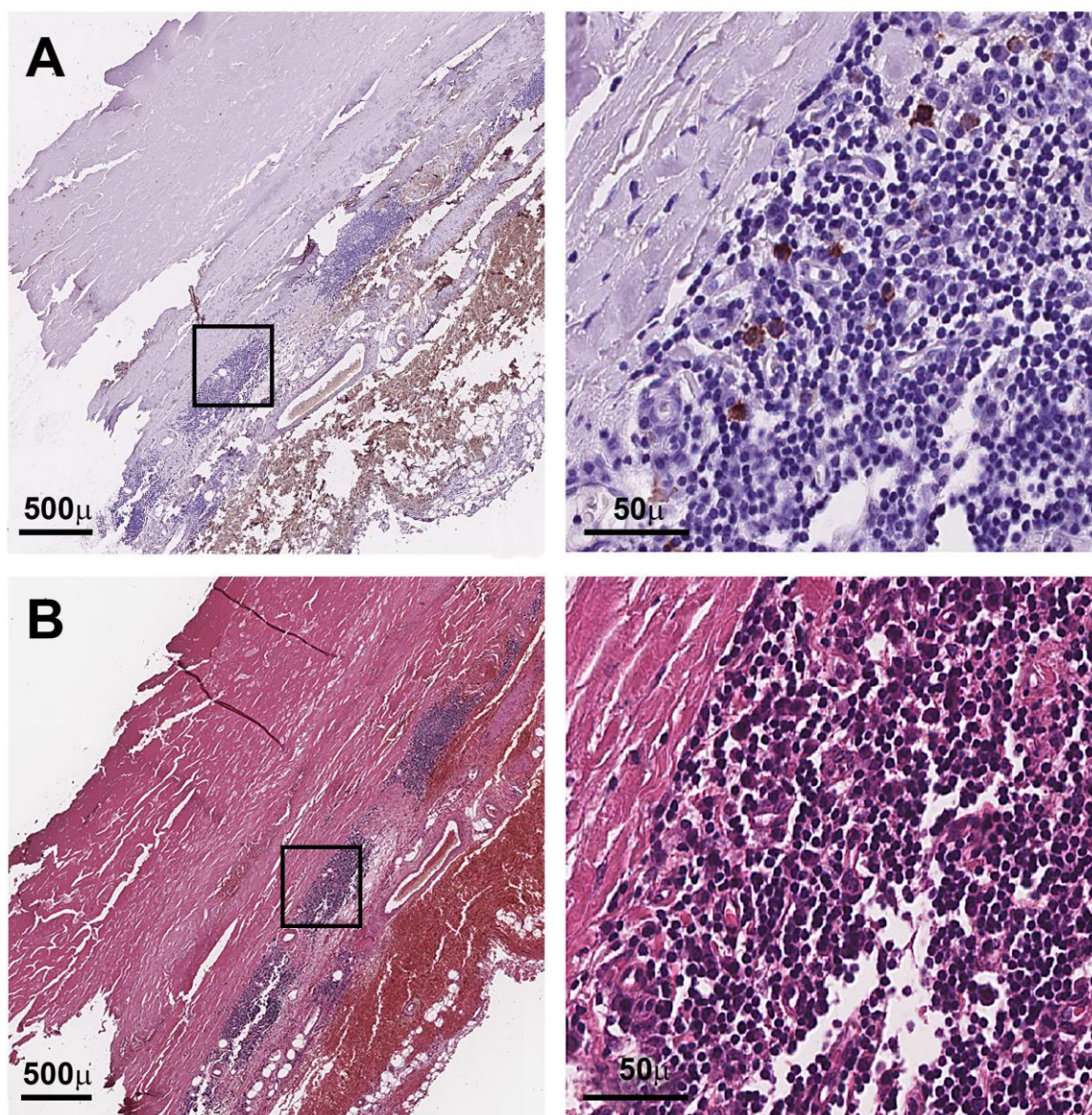
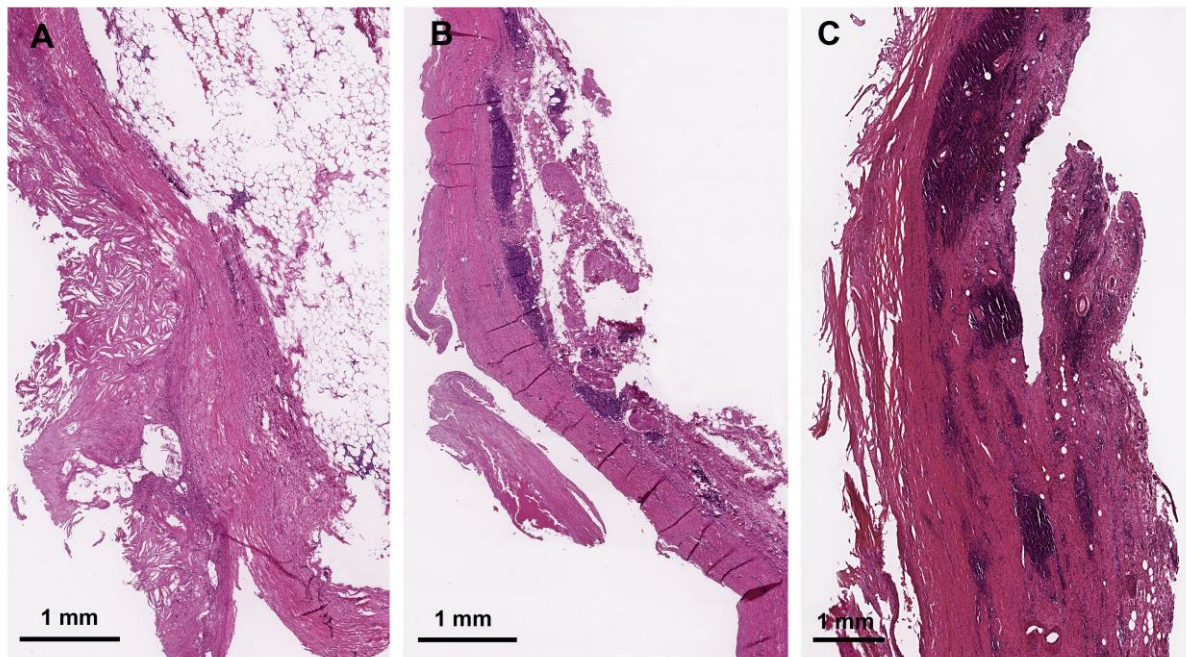


## Supplement Material

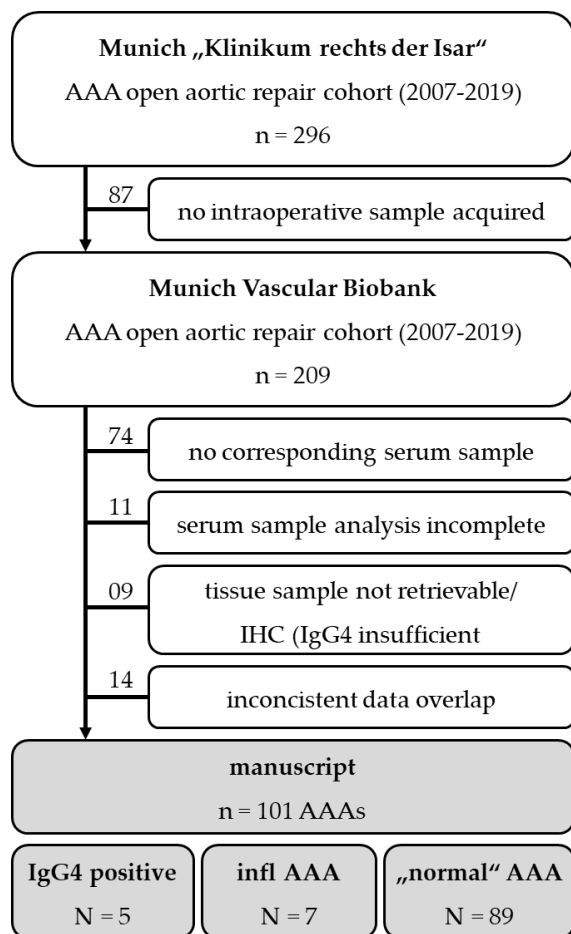


**Suppl. Figure S1: Additional example of IgG4 positive AAA staining:** (A) Overview and close up of IgG4-immunostaining from additional patients with positivity score 1. (B) Corresponding overview and close up of HE staining. (scale bar 200μm, 50μm respectively, all photos lumen oriented upwards).





**Suppl. Figure S2: Degree of inflammation in AAA vessel wall. (A)** No to very low level of infiltrate. **(B)** Intermediate level of infiltrate. **(C)** High levels of inflammatory infiltrate (scale bar 1mm; lumen oriented sideways; HE staining).



**Suppl. Figure S3: Inclusion flow chart.**

		patient cohort	IgG4 positive AAA	inflammatory AAA
		N=101	N=5	N=7
<b>AAA characteristics</b>				
growt	slow	10 (9.9)	2 (40)	1 (14.3)
	intermediate	22 (21.8)	0	3 (42.9)
	fast	13 (12.9)	0	0
<b>procedural details and clinical outcome</b>				
surgical complication		20 (19.8)	1 (20)	2 (28.6)
SSI		12 (11.9)	1 (20)	1 (14.3)
leg ischemia		7 (6.9)	0	1 (14.3)
bleeding		5 (5)	0	0
bowel ischemia		1 (1)	0	0
medical complication		40 (39.6)	2 (40)	1 (14.3)
urinary tract infection		7 (6.9)	1 (20)	0
acute kidney failure		11 (10.9)	0	0
ischemic colitis		5 (5)	0	0
myocardial infarction		3 (3)	0	0
stroke		1 (1)	0	0
lung edema		7 (6.9)	1 (20)	0
pneumonia		11 (10.9)	0	1 (14.3)
other		2 (2)	0	0

**Suppl. Table S1: Additional AAA characteristics and short-term clinical outcomes.** SSI = surgical site infection. Continuous variables are shown as mean  $\pm$  one standard deviation (SD). Categorical variables are shown as absolute number and percentage.