

Supplementary Materials

For

**Clinicopathological Correlation of Chronic Thromboembolic Pulmonary Hypertension: A
retrospective study**

Manuscript ID: jcm-1976754

Contents:

Figures S1 through S4 and Figure Legends

Table S1

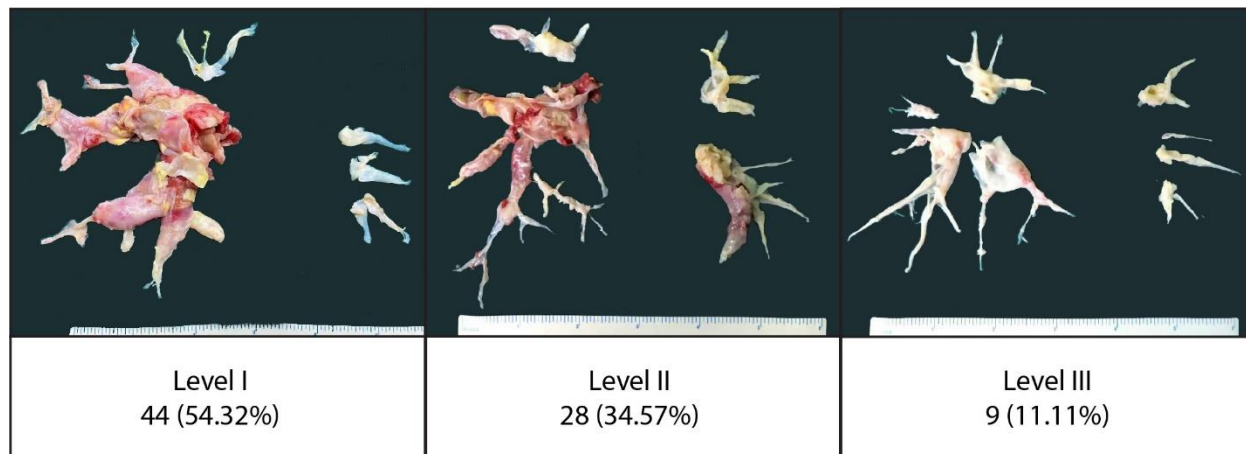


Fig. S1. Representative gross photographs of different types of PEA specimens by UCSD surgical classification.

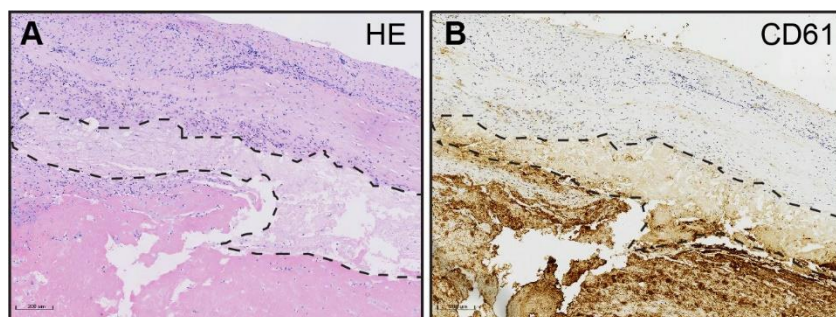


Fig. S2. Representative images of HE staining (A) and CD61 immunohistochemical staining (B) of atherosclerotic lesion accompanied with thrombus. Necrotic plaques were indicated by dashed lines. Scale bar =200 μm .

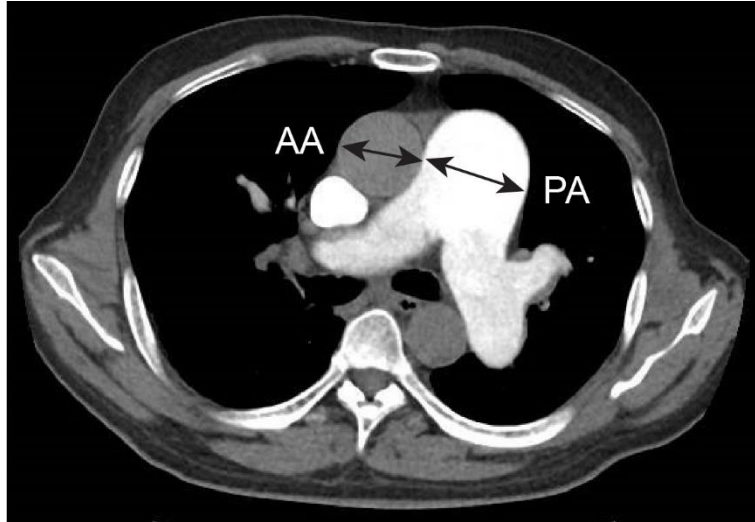


Fig. S3. Representative CTPA image of CTEPH. Pulmonary artery diameter (PA) and ascending aorta diameter (AA) were measured at the level of the bifurcation of the pulmonary trunk to calculate PA/AA.

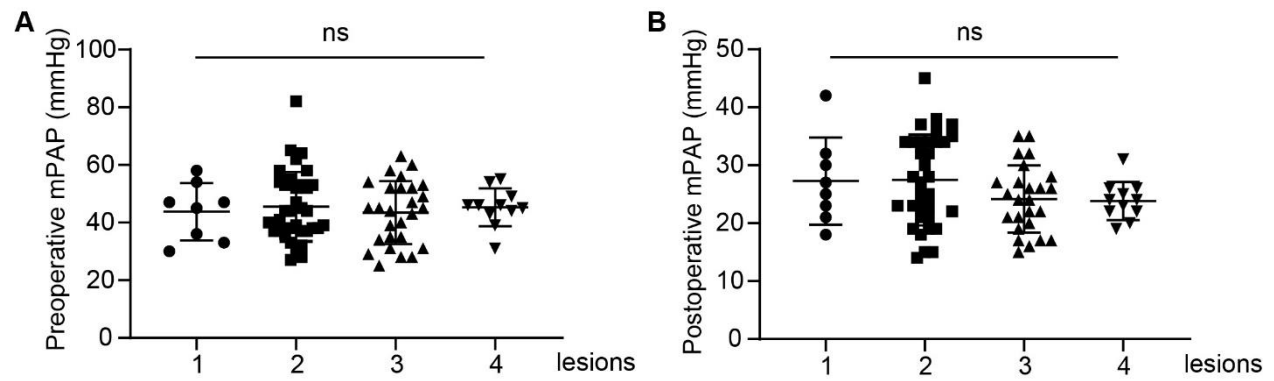


Fig. S4. mPAP levels were comparable among patients with one type and with several types of lesions before (A) and after PEA (B). Data are presented as mean \pm SD and analyzed through one-way ANOVA.

Table S1. Clinical characteristics of patients with or without atherosclerosis.

Parameters	Non-atherosclerosis	Atherosclerosis	<i>p</i> -value
Subjects n	56	25	
Age	49.14±13.27	53.44±10.47	0.1564
Sex male%	69.64	60	0.3951
BMI	23.90±3.14	25.42±4.12	0.0743
Ever smoking%	33.93	36	0.8563
Atherosclerotic diseases%*	30.36	40	0.3951
TC (mmol/L)	4.04±1.12	3.86±1.40	0.5714
TG (mmol/L)	1.47±0.80	1.29±0.96	0.4153

Values are expressed as n (%) or means ± standard deviations (SDs) unless otherwise indicated.

BMI: body mass index; TC: total cholesterol; TG: triglyceride. *Atherosclerotic diseases include coronary artery disease, carotid stenosis, and lower limb atherosclerosis.