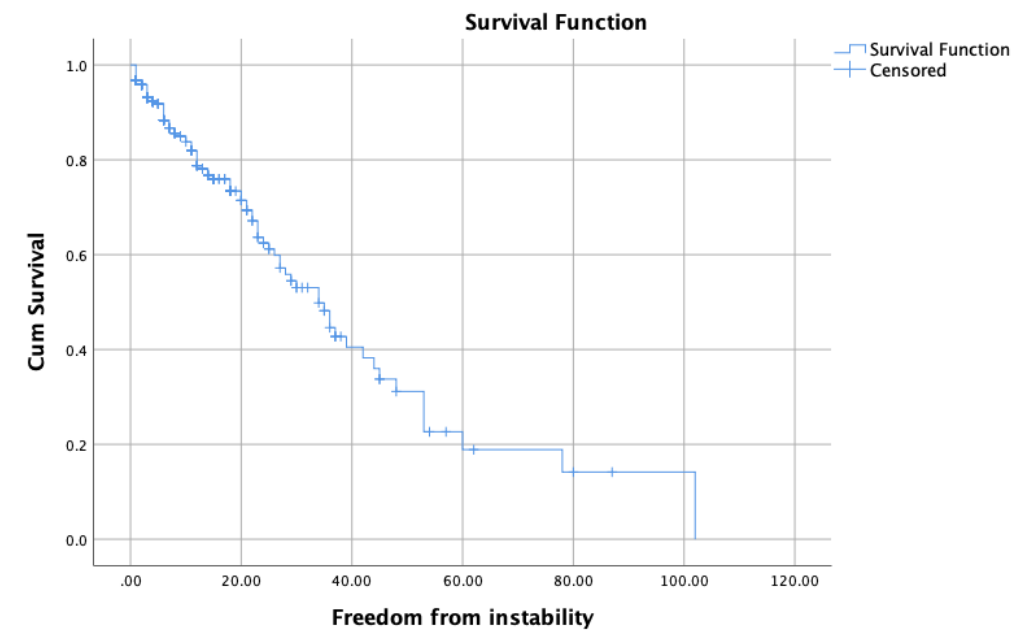
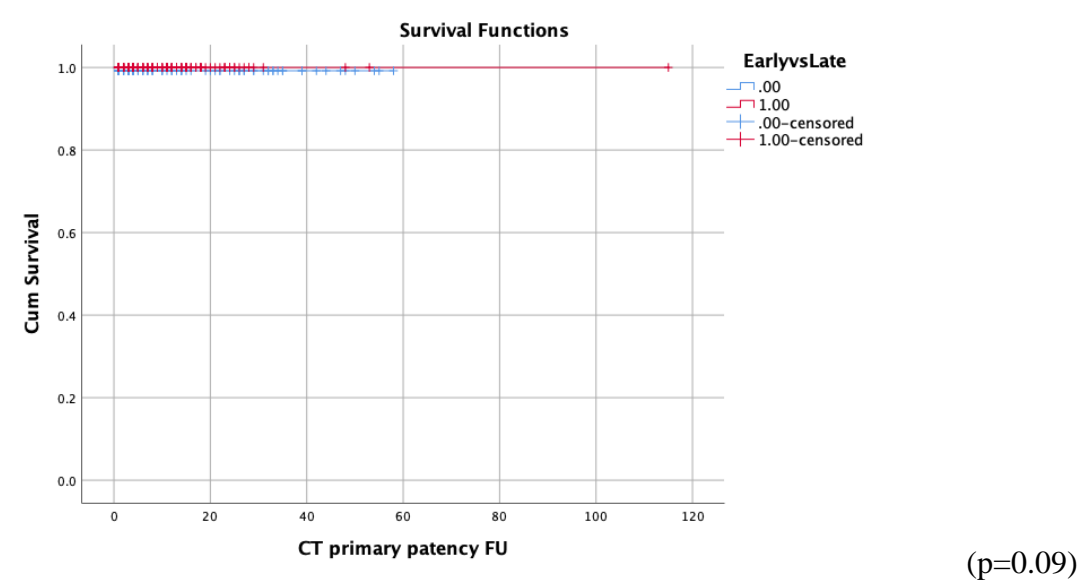


Supplementary Figure S1. Freedom from target vessel instability. SE: standard error.



Months	1	3	6	12	24	36
Patients at risk	508	274	180	124	52	25
Events	17	28	38	54	71	83
Percentages	96.8%	93%	88.4%	79%	62%	45%
SE	0.8	1.3	1.9	2.8	4.3	5.4

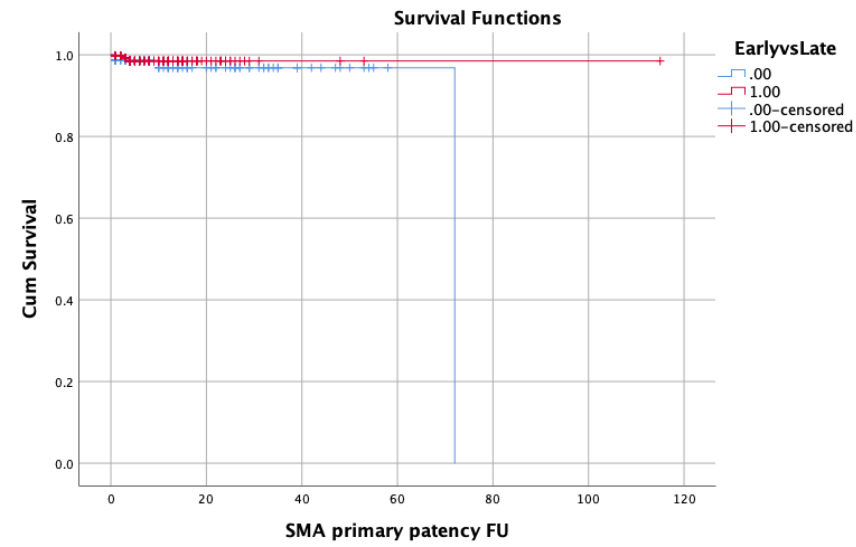
Supplementary Figure S2. **(a)**. Sub-analysis between early and late experience for primary patency of coeliac trunk (CT) bridging covered stent. SE: standard error. **(b)**. Sub-analysis between early and late experience for primary patency of superior mesenteric artery (SMA) bridging covered stent. SE: standard error. **(c)**. Sub-analysis between early and late experience for primary patency of right renal artery (RRA) bridging covered stent. SE: standard error. **(d)**. Sub-analysis between early and late experience for primary patency of left renal artery (LRA) bridging covered stent. SE: standard error.



Months	1	3	6	12	24	36
Patients at risk Early	125	80	57	41	21	12
Events	1	1	1	1	1	1
Percentages	99.2					
SE	0.8					
Patients at risk Early	341	170	97	58	13	3

Events	0	0	0	0	0	0
Percentages						
SE						

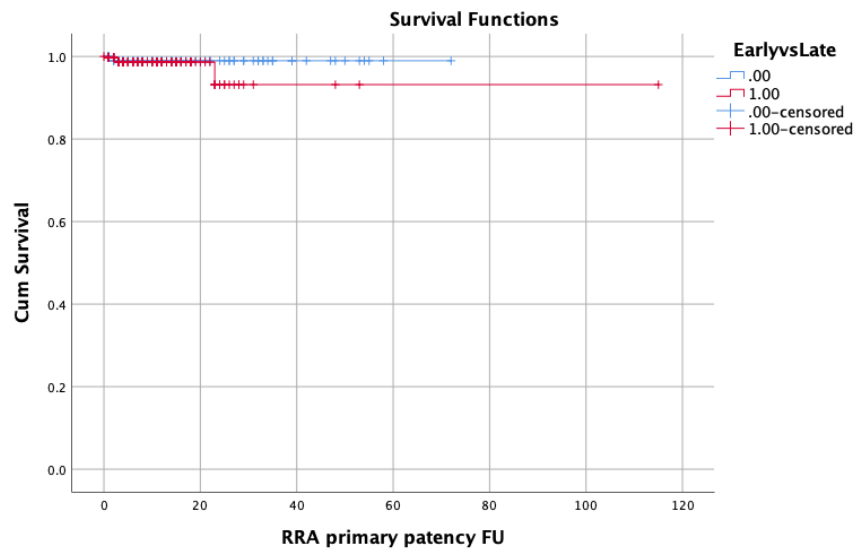
(a)



(p=0.21)

Months	1	3	6	12	24	36
Patients at risk Early	146	92	66	48	30	13
Events	2	2	2	3	3	3
Percentages	98.6%			96.8		
SE	0.9			2		
Patients at risk Early	368	186	104	62		
Events	1	2	3	3	13	3
Percentages	99.7	99.2	98.5		3	3
SE	0.3	0.6	0.9			

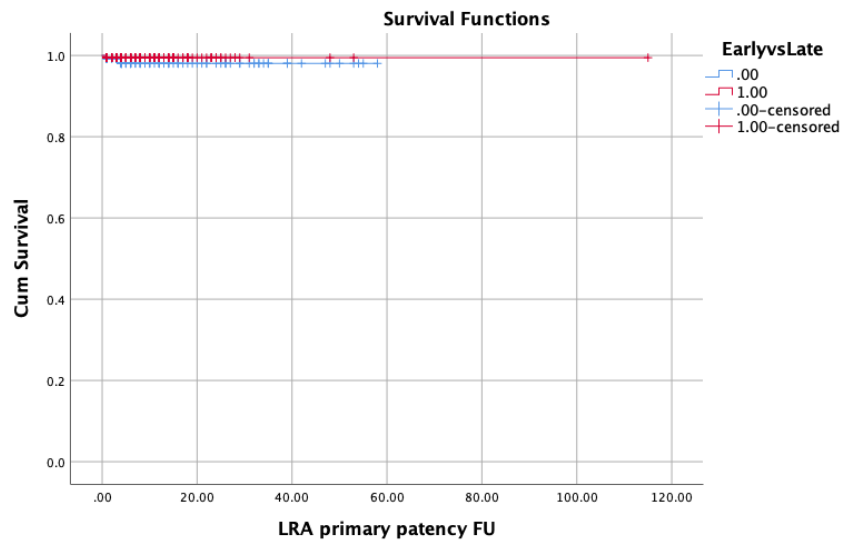
(b)



(p=0.39)

Months	1	3	6	12	24	36
Patients at risk Early	144	91	65	48	28	12
Events	0	1	1	1	1	1
Percentages		99				
SE		1				
Patients at risk Early	372	183	103	61	12	
Events	1	3	3	3	4	4
Percentages	99.7	98.7			93.2	3
SE	0.3	0.8			5.4	

(c)



Months	1	3	6	12	24	36
Patients at risk Early	146	92	64	47	27	11
Events	1	1	2	2	2	1
Percentages	99.3		98			
SE	0.7		1.4			
Patients at risk Early	368	184	104	59	13	3
Events	2	2	2	2	2	2
Percentages	99.5					
SE	0.4					

(d)