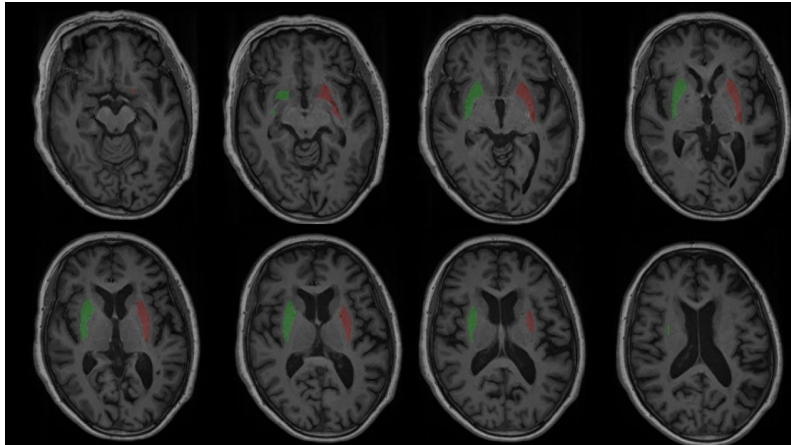
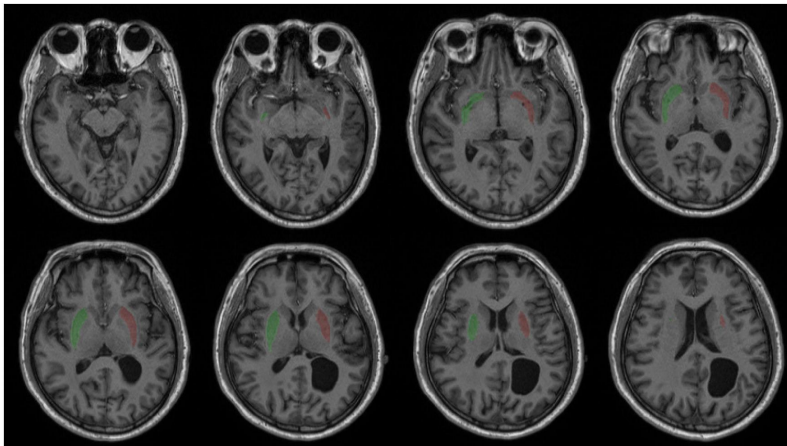


Supplemental Data: Putaminal volumes of quantitative images and corresponding result of EQ for each patient

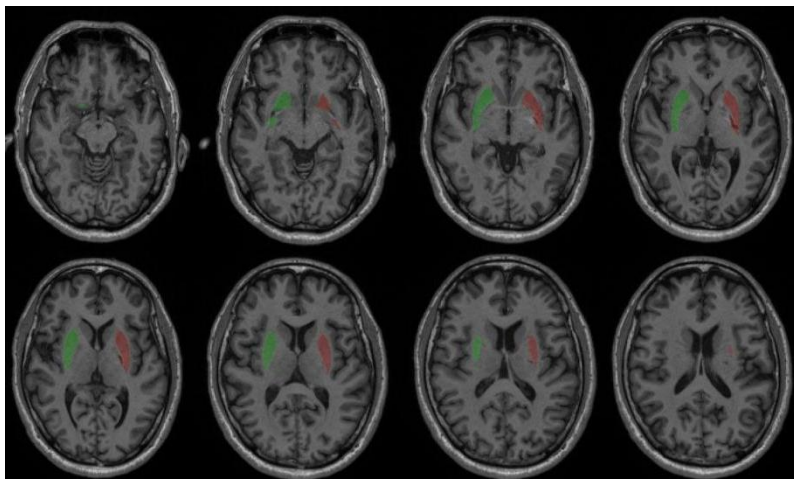
Subject 1 Putamen volume = 10.3ml EQ = 19



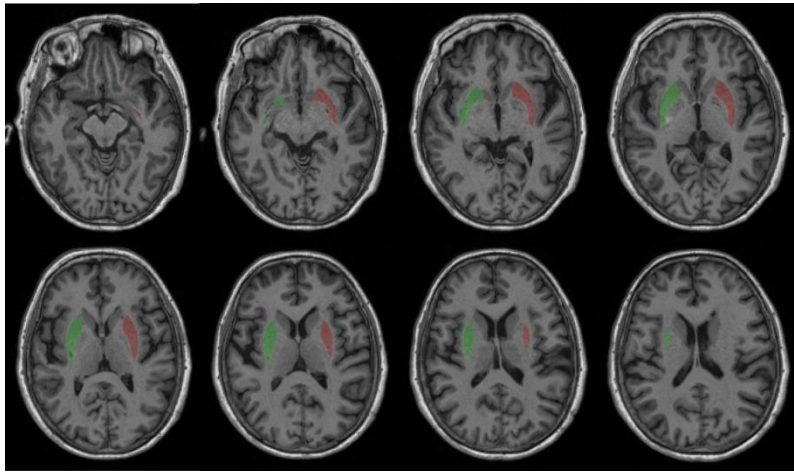
Subject 2 Putamen volume = 9.92ml EQ = 52



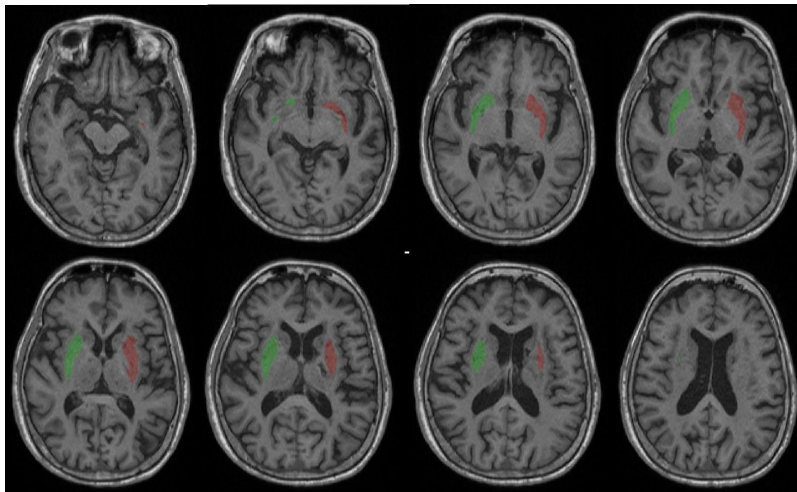
Subject 3 Putamen volume = 11.6ml EQ = 57



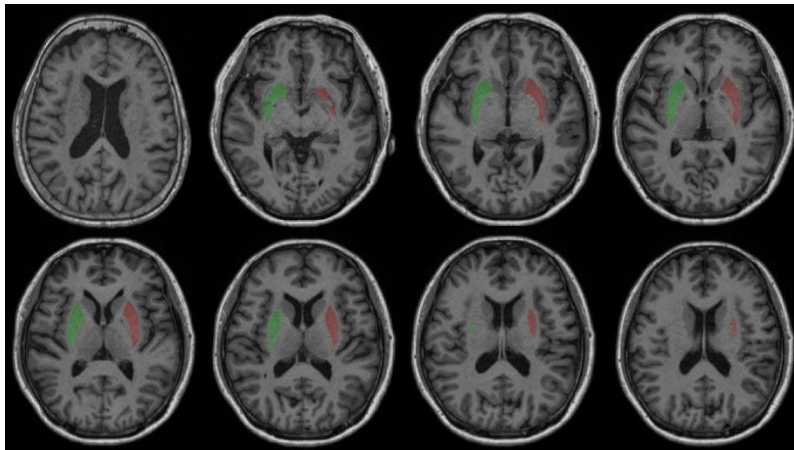
Subject 4 Putamen volume = 11.2ml EQ = 51



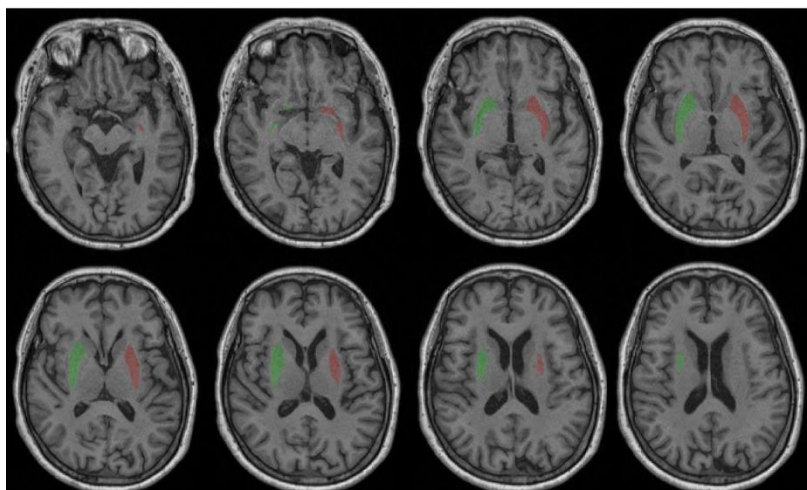
Subject 5 Putamen volume = 10.6ml EQ = 60



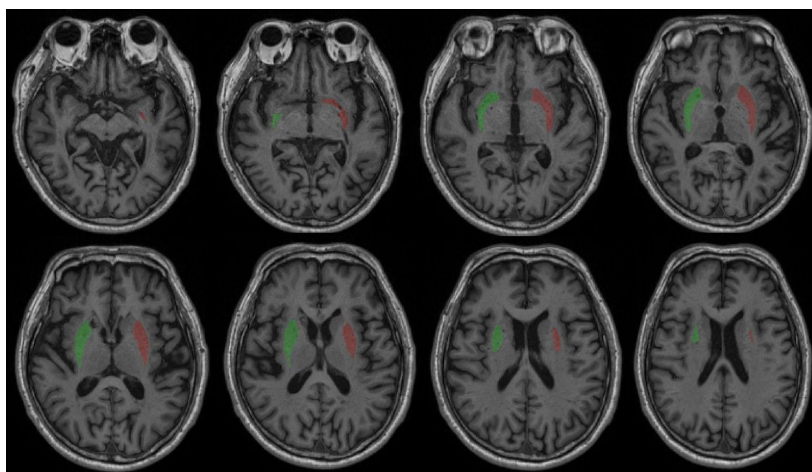
Subject 6 Putamen volume = 11.6ml EQ = 73



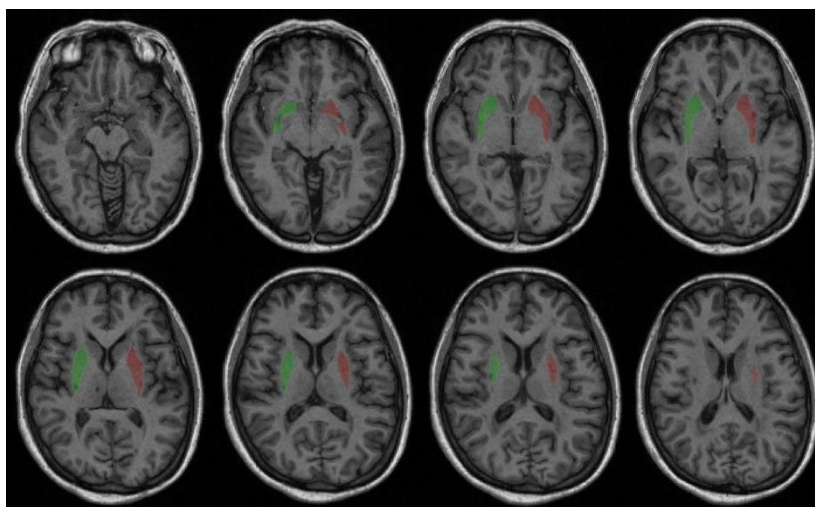
Subject 7 Putamen volume = 10.9ml EQ = 44



Subject 8 Putamen volume = 10.2ml EQ = 31

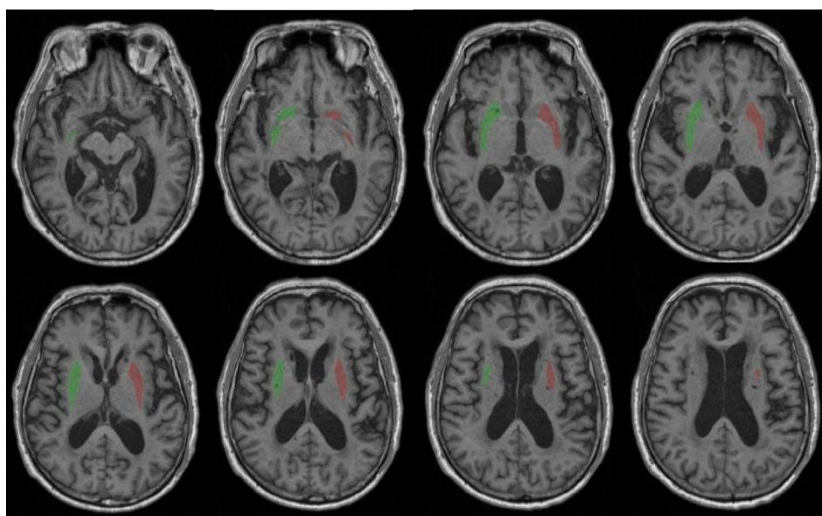


Subject 9 Putamen volume = 10.1ml EQ = 50

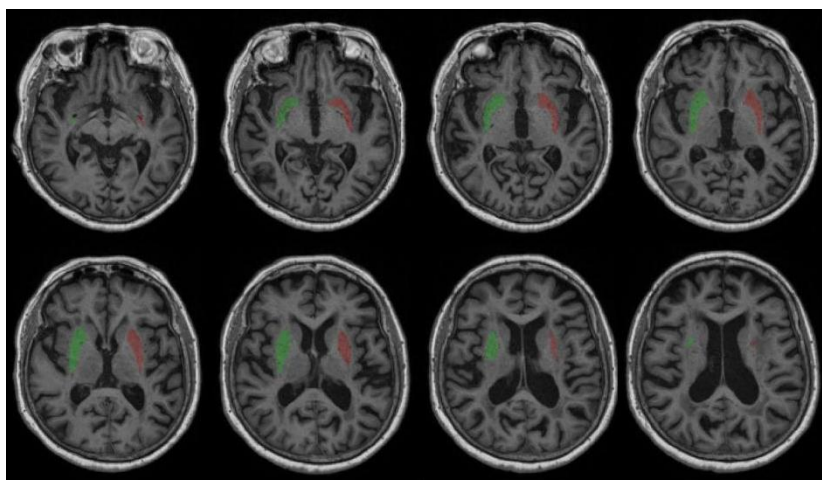




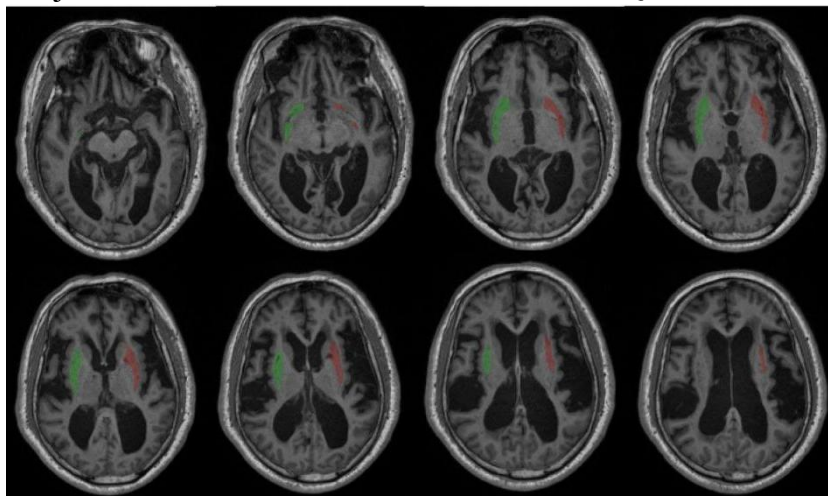
Subject 10     Putamen volume = 11.7ml     EQ = 57



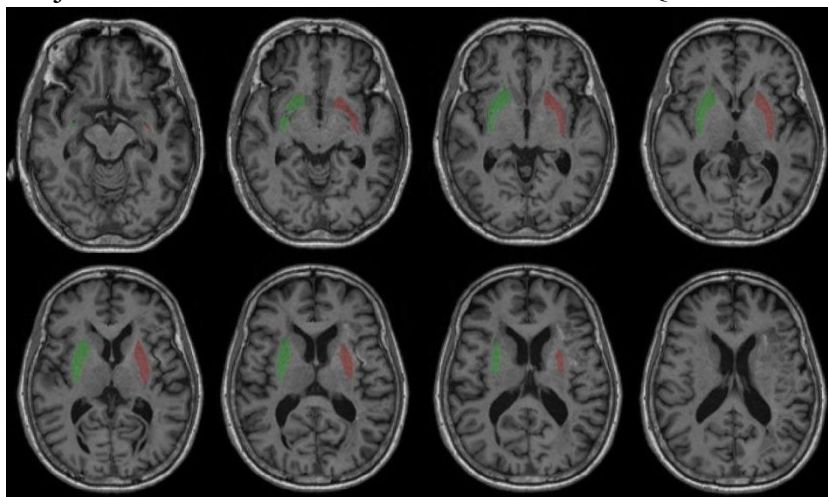
Subject 11     Putamen volume = 10ml     EQ = 47



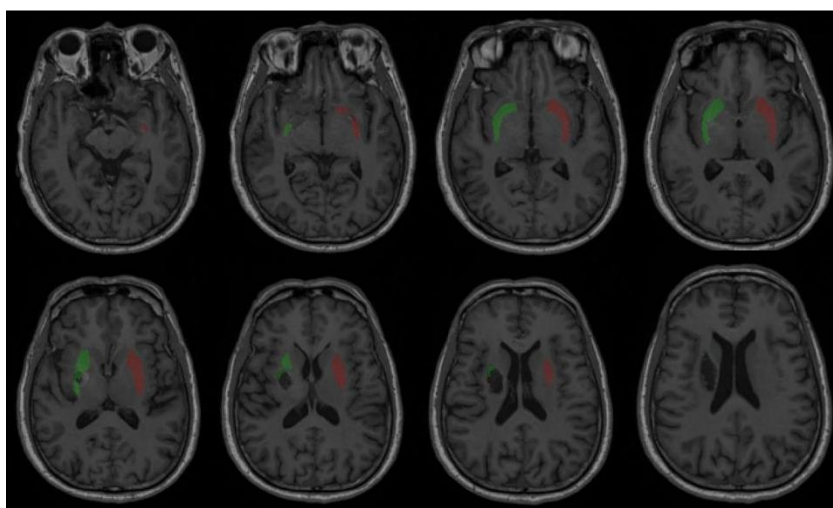
Subject 12     Putamen volume = 10ml     EQ = 33



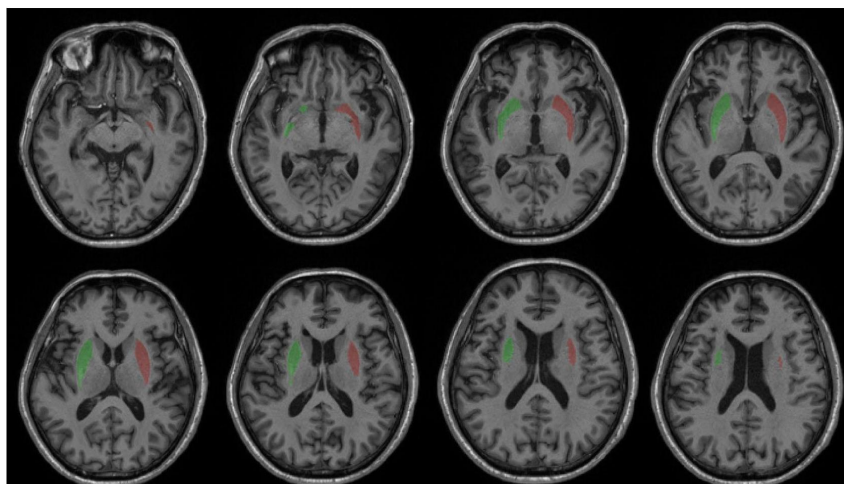
Subject 13      Putamen volume = 10.3ml      EQ = 24



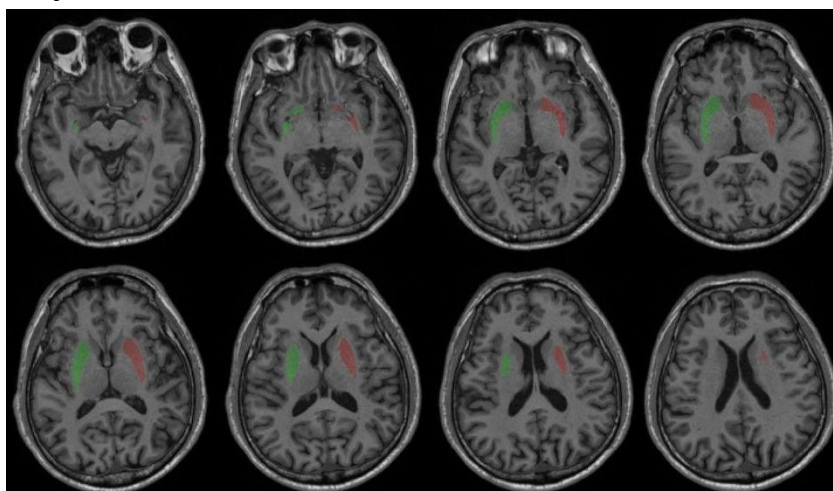
Subject 14      Putamen volume = 8.1ml      EQ = 20



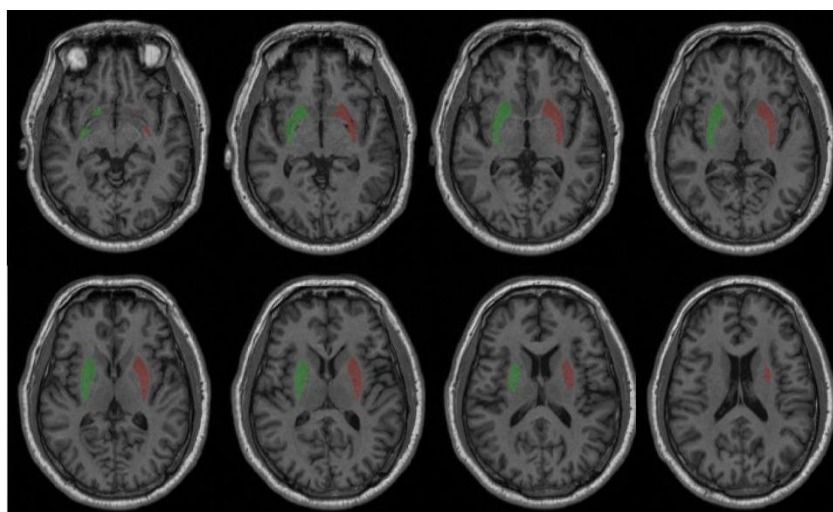
Subject 15      Putamen volume = 11.3ml      EQ = 30



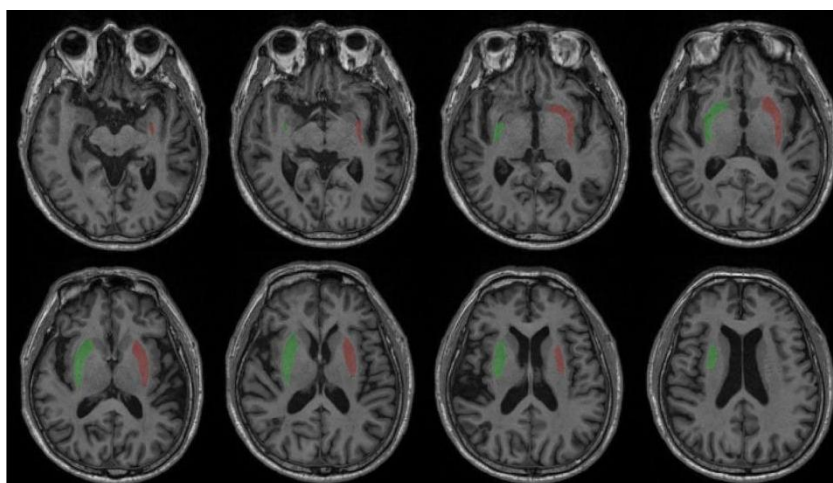
Subject 16 Putamen volume = 11.8ml EQ = 33



Subject 17 Putamen volume = 10.2ml EQ = 31

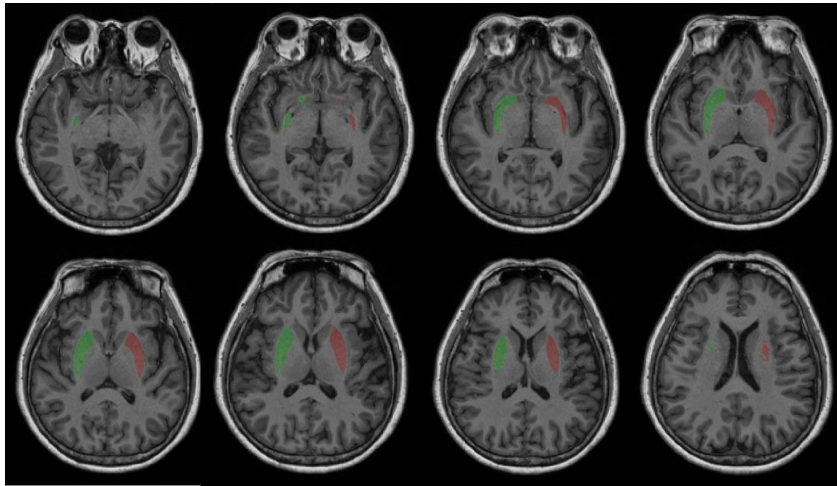


Subject 18 Putamen volume = 10.7ml EQ = 36

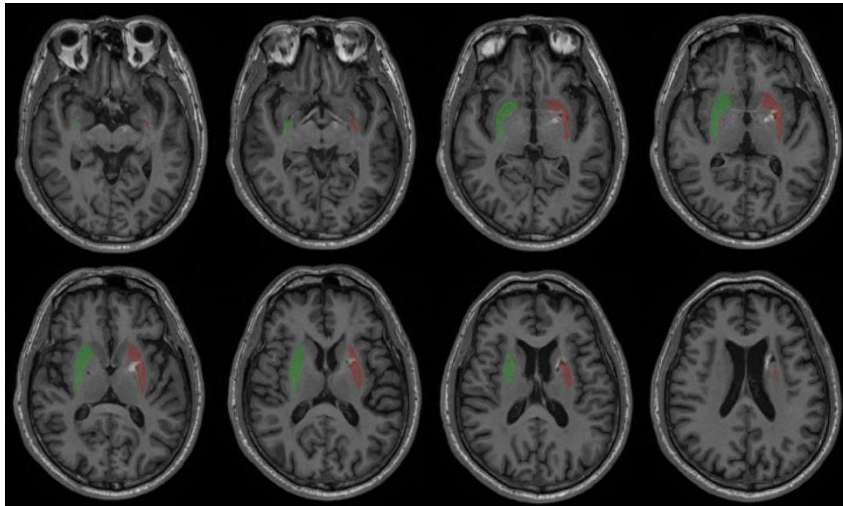




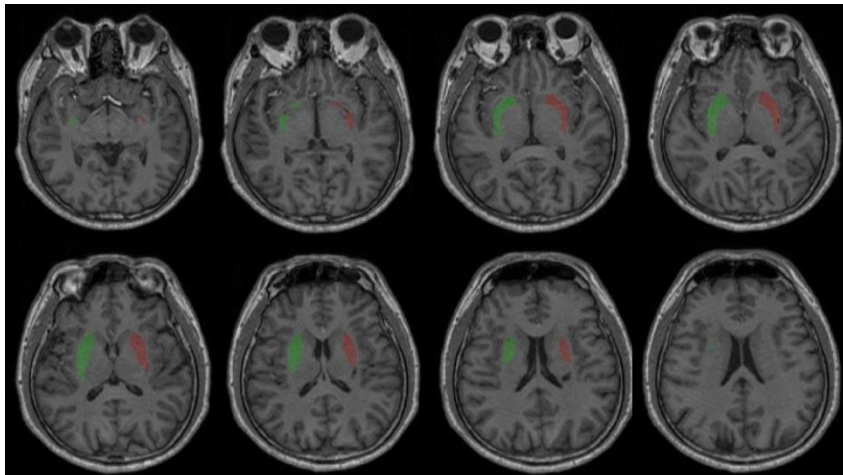
Subject 19 Putamen volume = 10.6ml EQ = 50



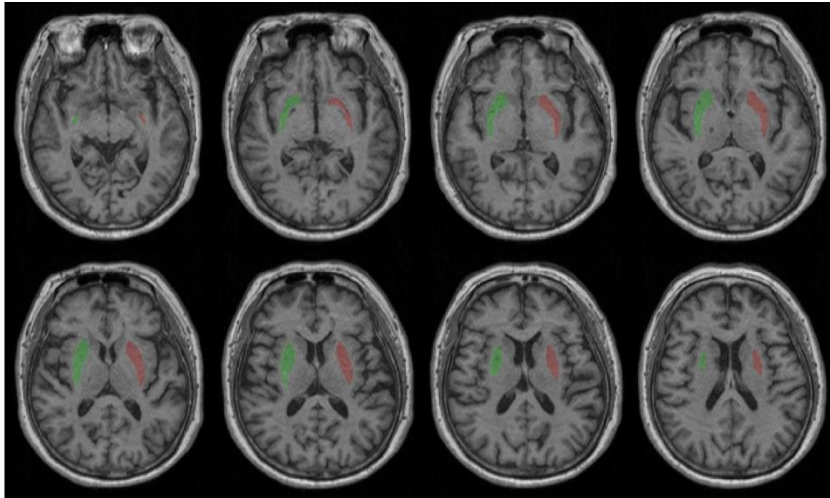
Subject 20 Putamen volume = 10ml EQ = 45



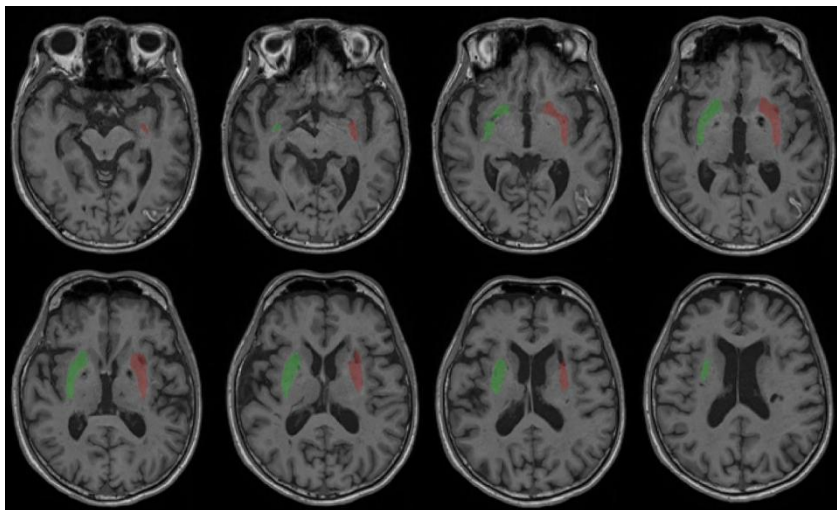
Subject 21 Putamen volume = 11.4ml EQ = 39



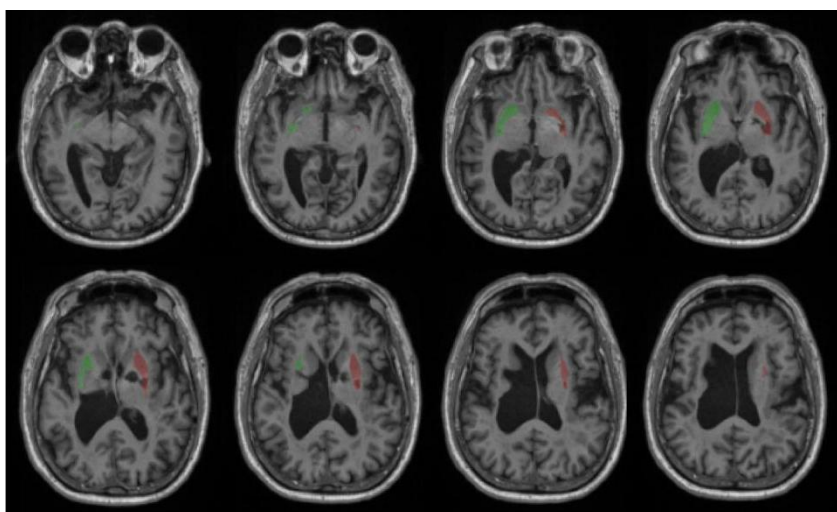
Subject 22 Putamen volume = 8.73ml EQ = 38



Subject 23 Putamen volume = 10.8ml EQ = 39

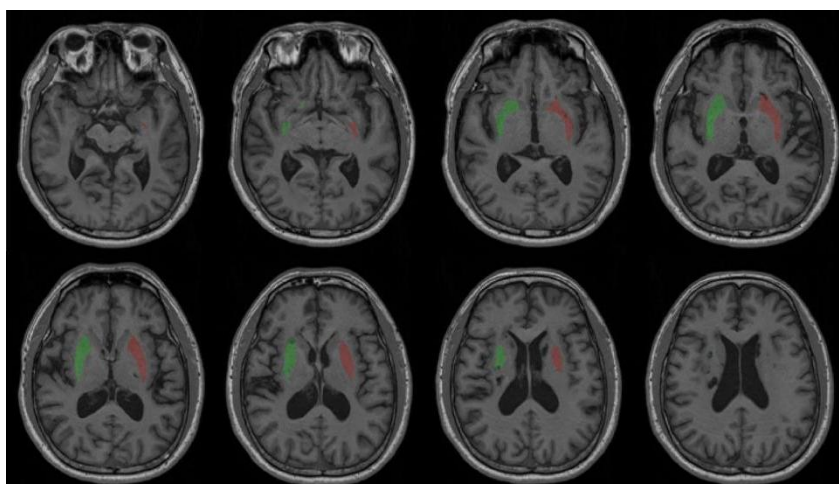


Subject 24 Putamen volume = 5.53ml EQ = 23

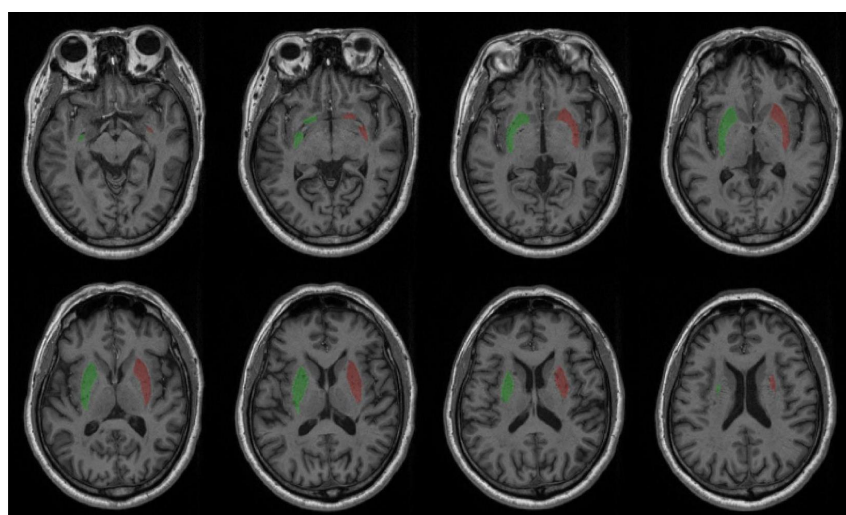




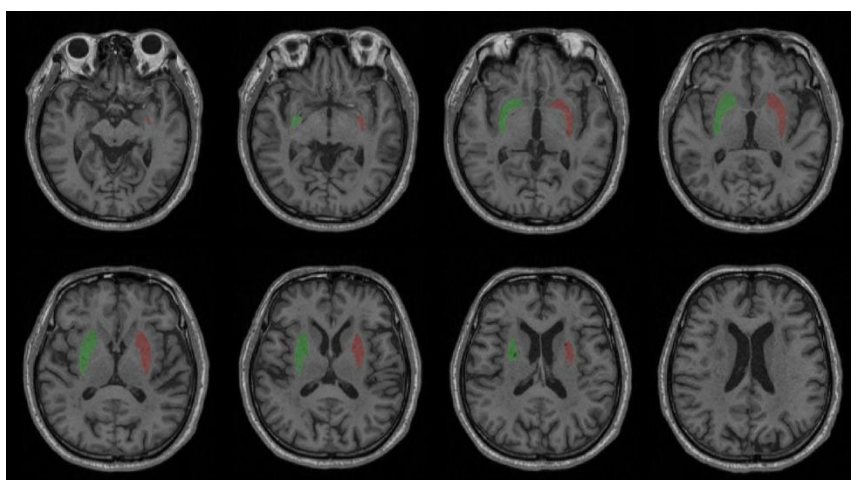
Subject 25     Putamen volume = 10.9ml     EQ = 46



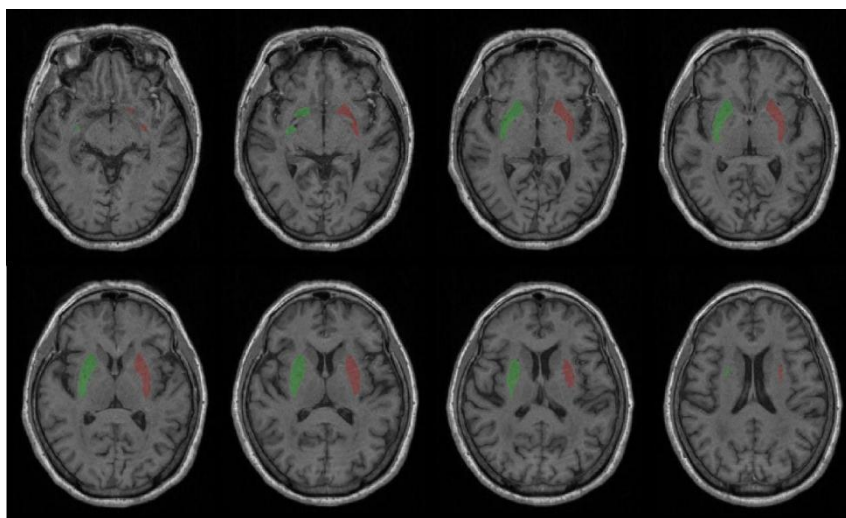
Subject 26     Putamen volume = 12.9ml     EQ = 20



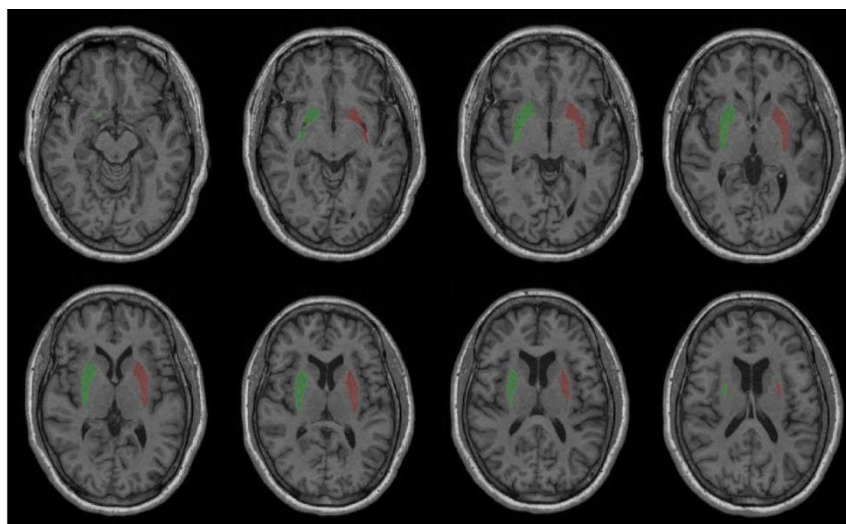
Subject 27     Putamen volume = 10.5ml     EQ = 48



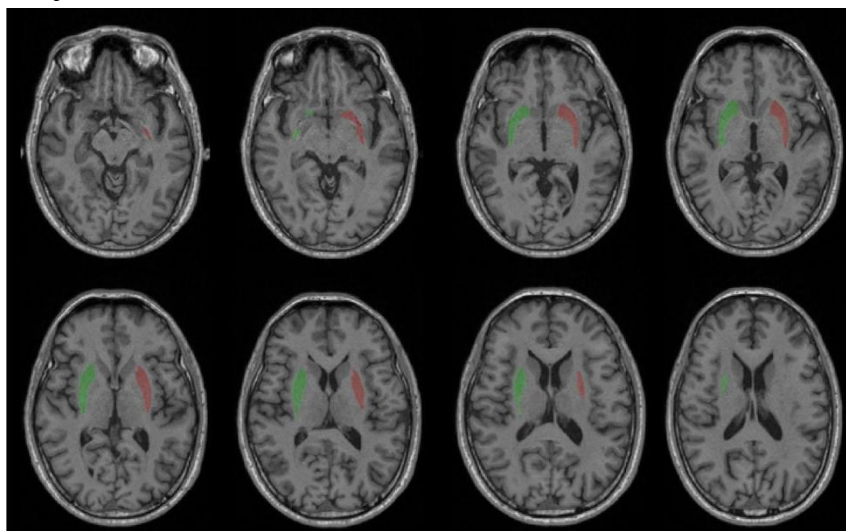
Subject 28    Putamen volume = 10.8ml    EQ = 52



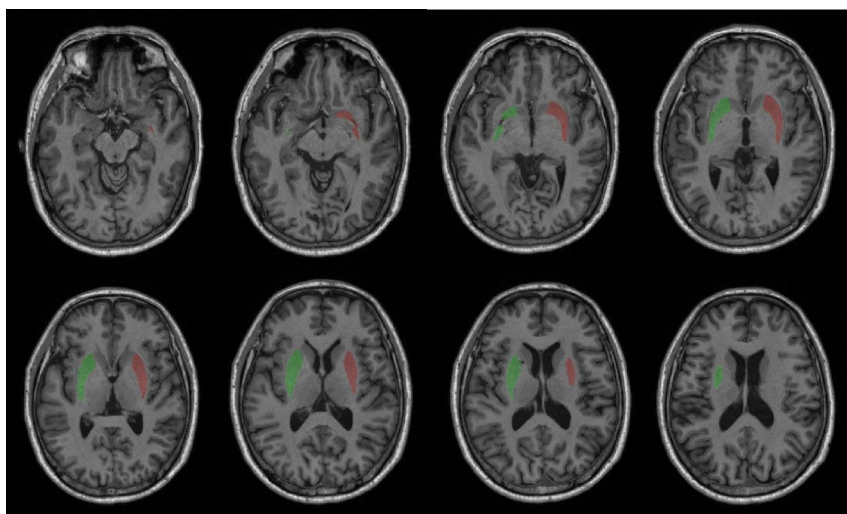
Subject 29    Putamen volume = 10.7ml    EQ = 26



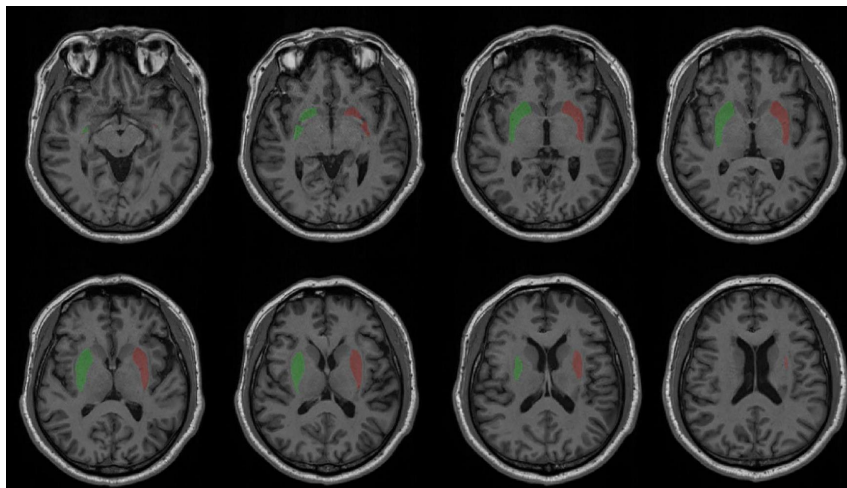
Subject 30    Putamen volume = 10.3ml    EQ = 16



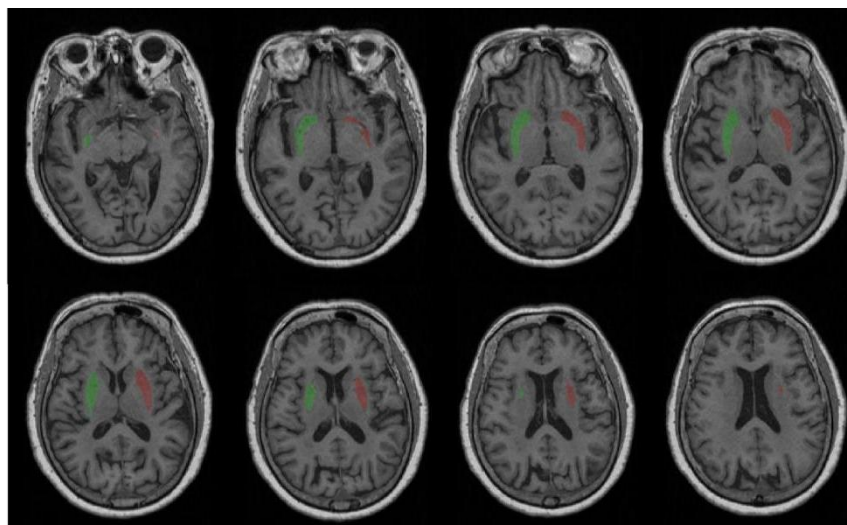
Subject 31    Putamen volume = 12.7ml    EQ = 36



Subject 32    Putamen volume = 13ml    EQ = 33

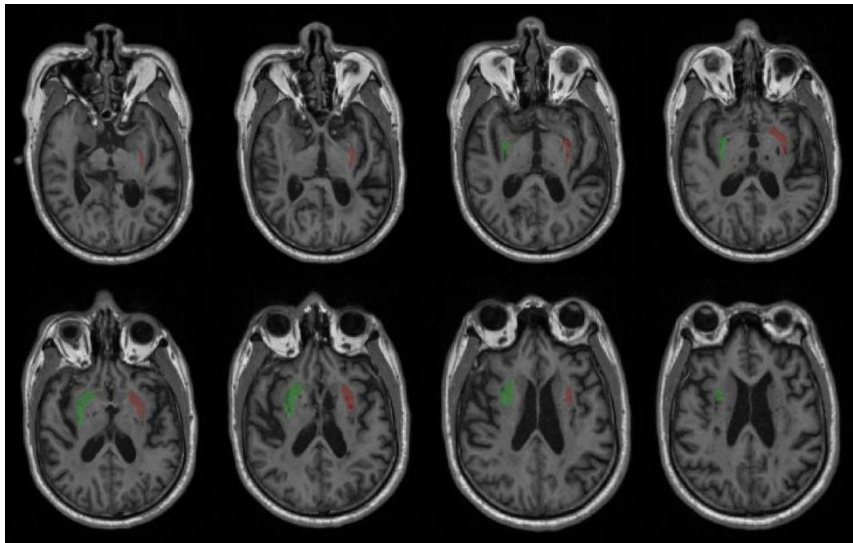


Subject 33    Putamen volume = 8.72ml    EQ = 35

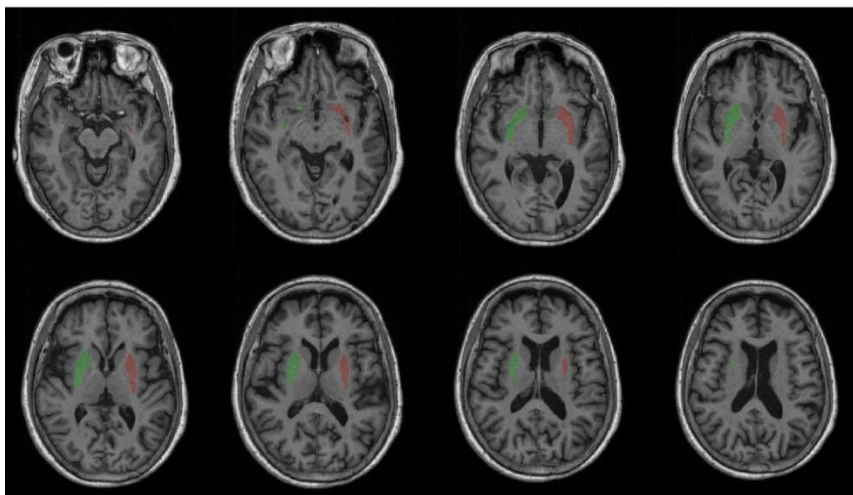




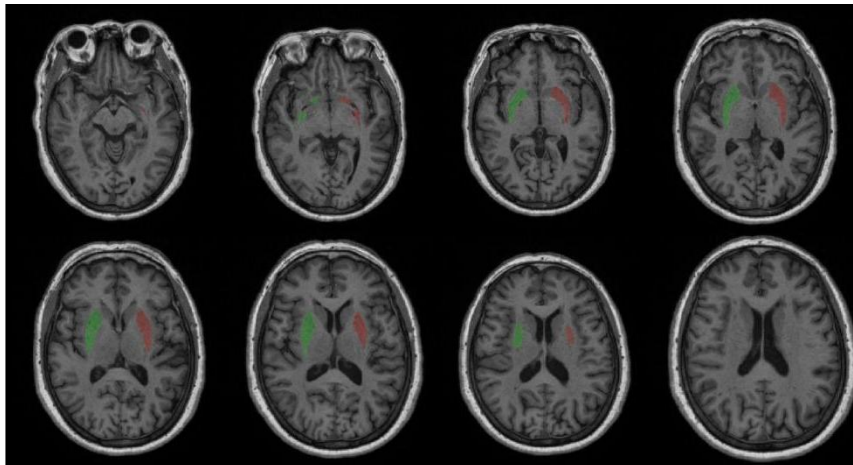
Subject 34    Putamen volume = 8.95ml    EQ = 32



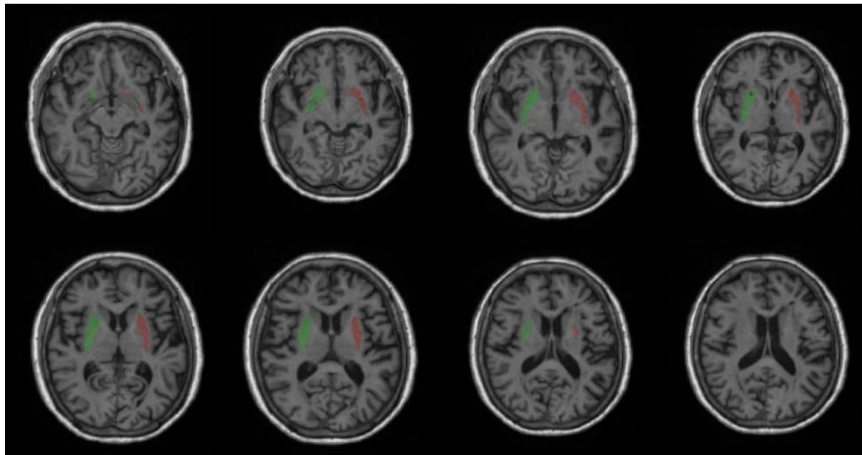
Subject 35    Putamen volume = 8.75ml    EQ = 34



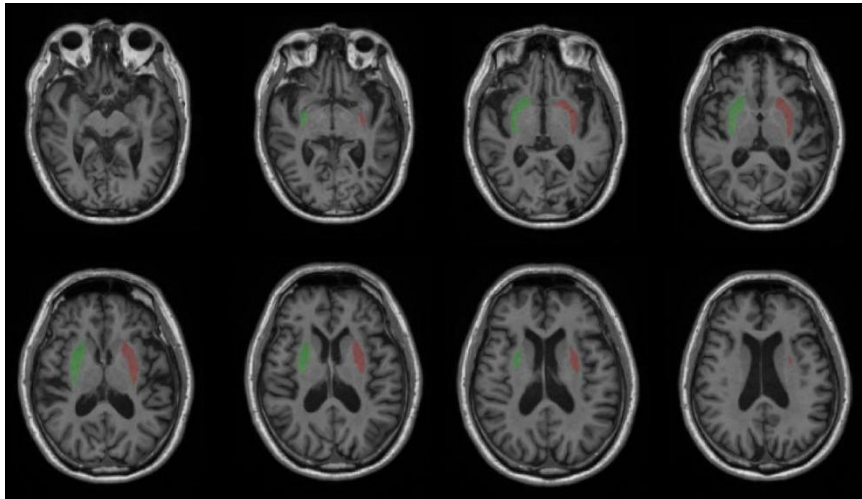
Subject 36    Putamen volume = 10.8ml    EQ = 51



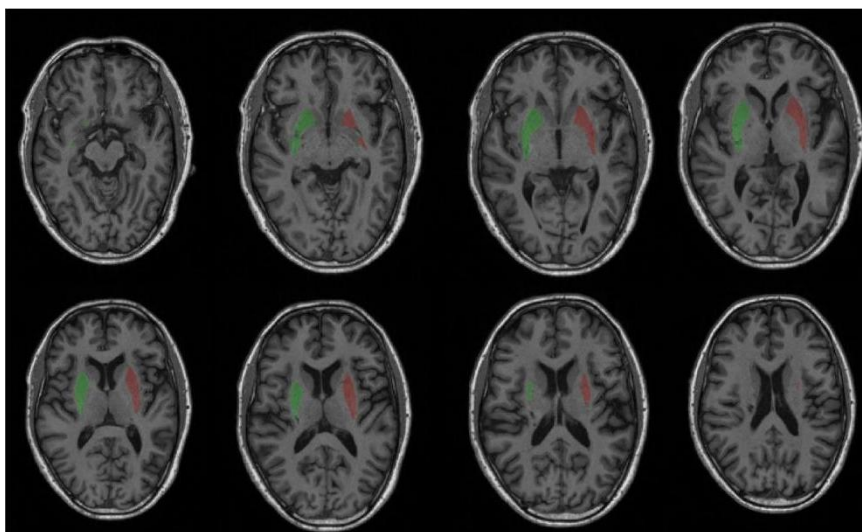
Subject 37 Putamen volume = 8.96ml EQ = 24



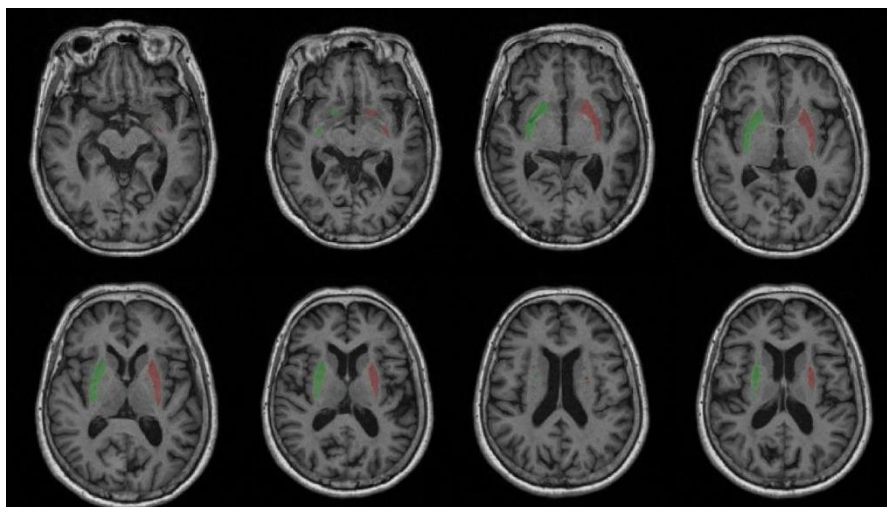
Subject 38 Putamen volume = 9.24ml EQ = 43



Subject 39 Putamen volume = 12ml EQ = 45



Subject 40    Putamen volume = 8.38ml    EQ = 20



Subject 41    Putamen volume = 11.1ml    EQ = 37

