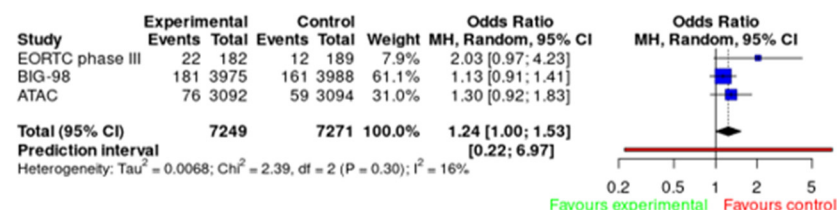
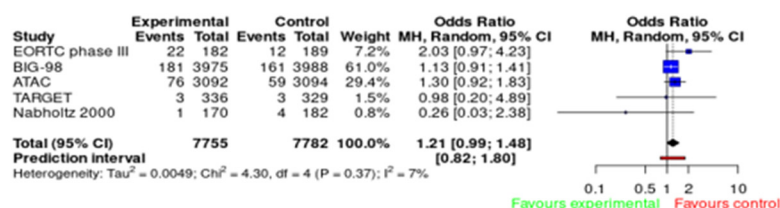


Supplementary Material S2: sensitivity analysis.

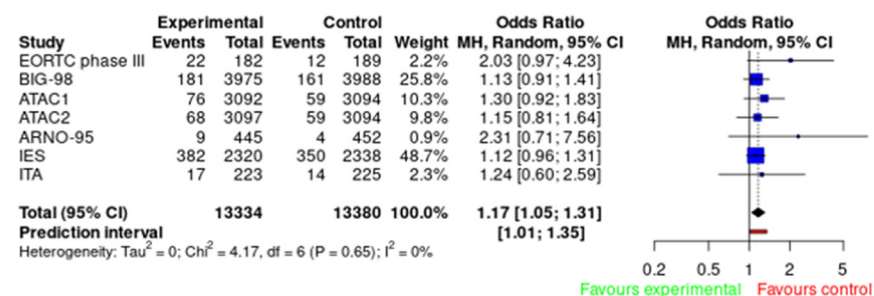
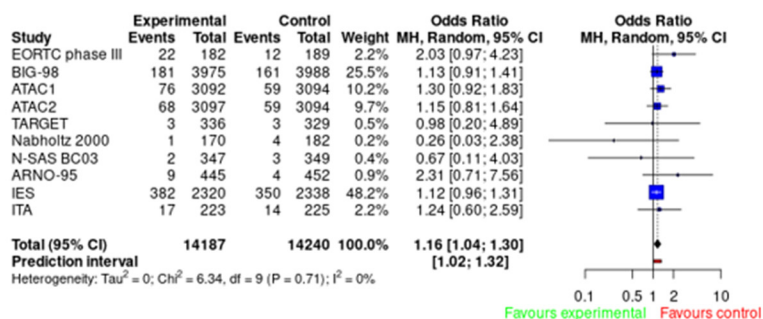
In the sensitivity analysis, were made the assumptions that studies with incidence rate of events < 0,01 (1%) will be excluded, therefore it only applies to cardiovascular events.

Cardiovascular events:

1. AIs vs. tamoxifen (monotherapy) – all (left) vs. without low incidence (right)



2. AIs (monotherapy) or AIs+tamoxifen (sequence) vs. tamoxifen (monotherapy) - all (left) vs. without low incidence (right)



3. AIs (monotherapy) vs. AIs+tamoxifen (sequence) or tamoxifen (monotherapy) - all (left) vs. without low incidence (right)

