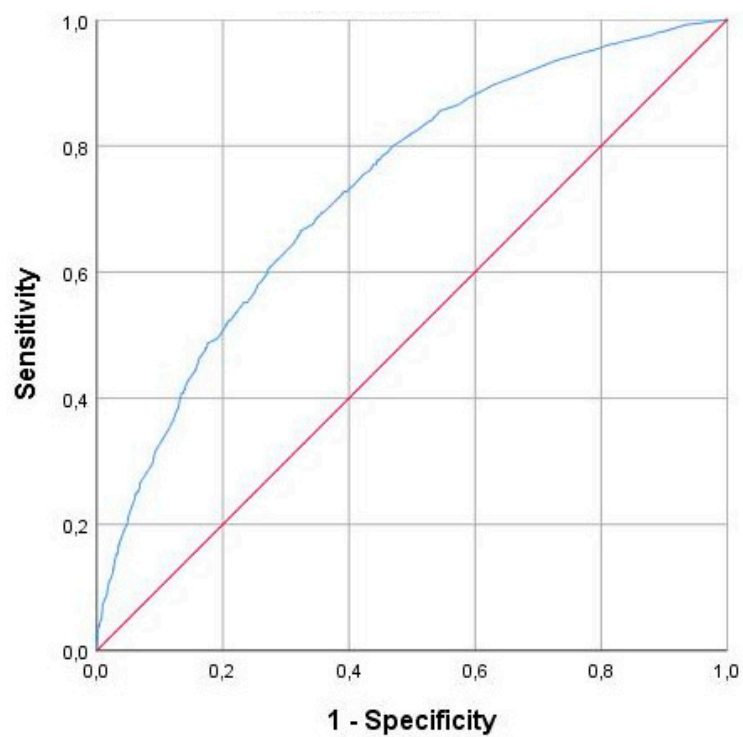


SUPPLEMENTARY MATERIALS

Figure S1. The ROC curve for classification according to the multivariable model for predicting mortality in patients with cardiogenic shock, AUC = 0.73.



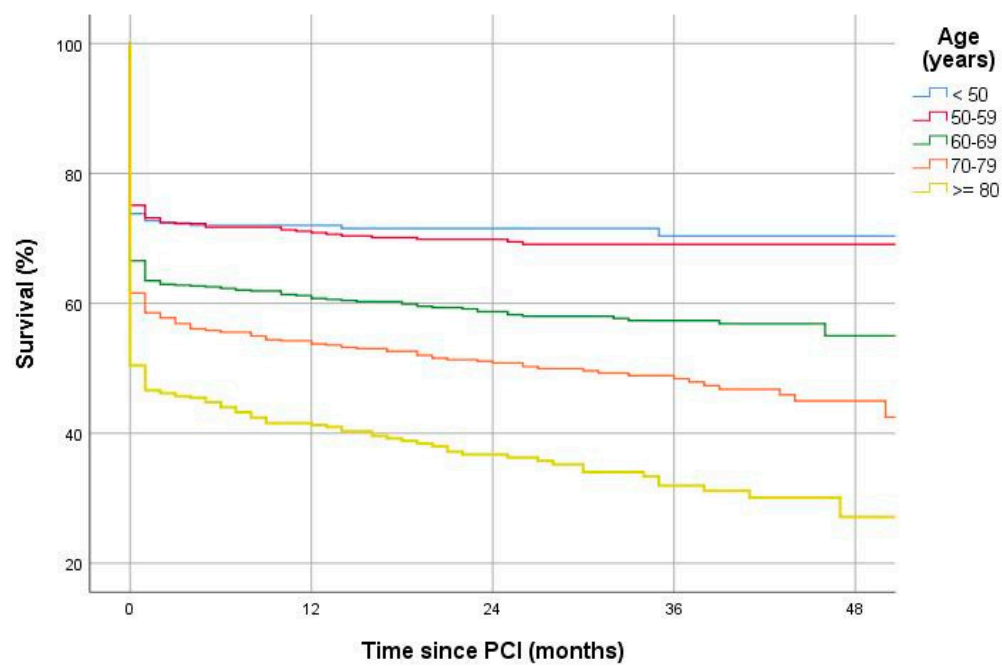
Diagonal segments are produced by ties.

Table S1. Results of univariable Cox regression analysis and multivariable model to predict mortality for patients with cardiogenic shock excluding patients who died before or at 30-days (N=1,916).

	Univariable			Multivariable		
	HR	95% CI	p-value	HR	95% CI	p-value
Age (years)	1.05	1.04-1.07	<0.001	1.04	1.02-1.05	<0.001
Male	0.82	0.61-1.09	0.17			
Diabetes mellitus	2.28	1.68-3.09	<0.001	1.66	1.19-2.31	<0.01
Multivessel disease	2.17	1.61-2.94	<0.001	1.47	1.06-2.04	0.02
CTO	1.03	0.42-2.49	0.95			
Prior MI	2.61	1.94-3.52	<0.001	1.95	1.40-2.71	<0.001
Prior CABG	2.47	1.59-3.84	<0.001	1.17	0.71-1.91	0.54
eGFR (ml/min/1.73 m ²)	0.98	0.98-0.99	<0.001	0.99	0.99-1.00	0.02
OHCA	0.70	0.52-0.93	0.02	0.92	0.67-1.26	0.61
STEMI	0.57	0.39-0.84	<0.01	0.78	0.52-1.18	0.23
PCI center	0.88	0.64-1.20	0.40			
Intervention year						
2015	1.00	0.64-1.55	0.98			
2016	1.27	0.82-1.97	0.28			
2017	1.10	0.71-1.71	0.67			

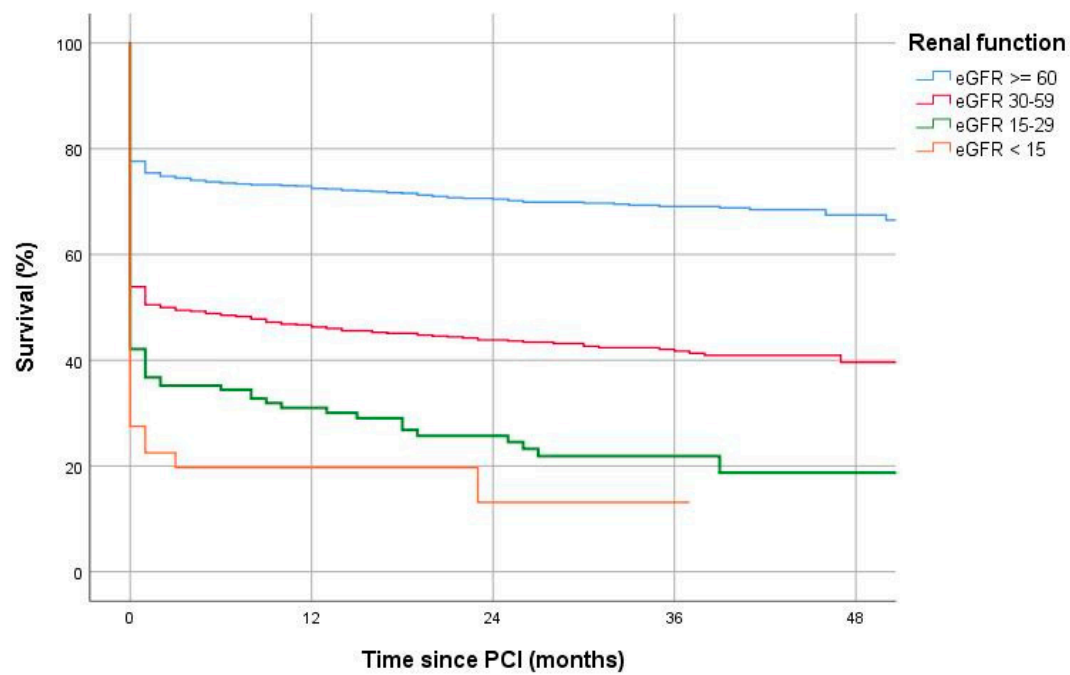
Variables with $p < 0.10$ in the univariable analysis were included in the multivariable model. STEMI vs NSTEMI; PCI center vs heart center; reference intervention year was 2018. CTO, chronic total occlusion; MI, myocardial infarction; CABG, coronary bypass grafting; eGFR, estimated glomerular filtration rate; STEMI, ST-segment elevation myocardial infarction; NSTEMI, non-ST-segment elevation myocardial infarction; PCI, percutaneous coronary intervention.

Figure S2. Kaplan Meier curves showing survival of cardiogenic shock patients treated by PCI (n=3,082) per age category, log-rank $p<0.001$.



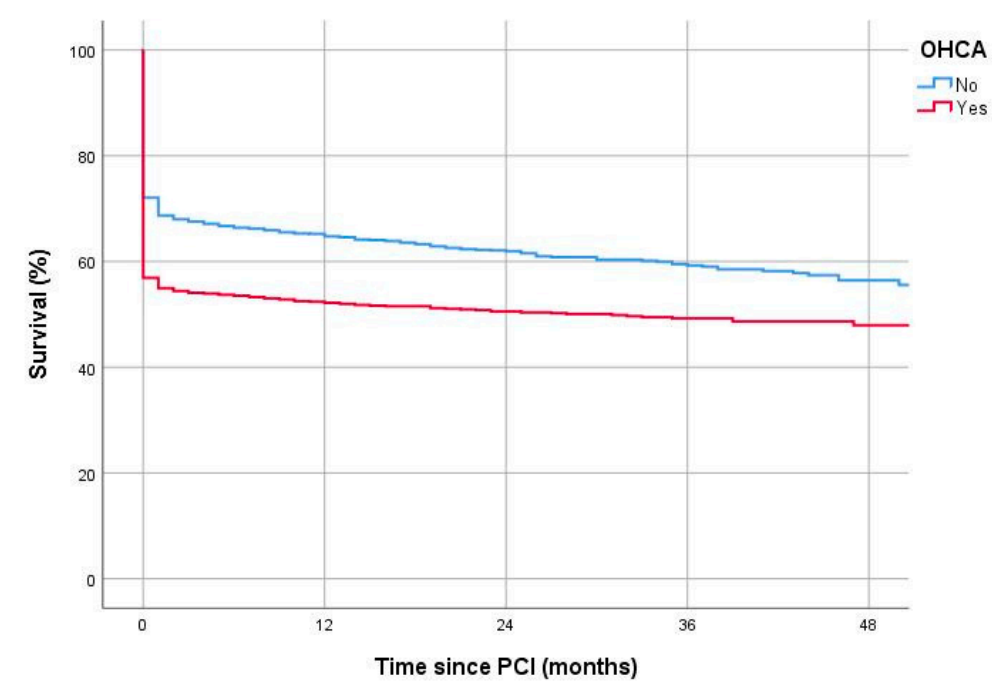
Age	No. at Risk				
<50	294	160	101	58	15
50-59	590	319	201	126	46
60-69	864	409	265	142	49
70-79	794	336	202	102	35
≥80	454	139	82	44	8

Figure S3. Kaplan Meier curves showing survival of cardiogenic shock patients treated by PCI (n=3,082) according to renal function, log-rank $p<0.001$.



eGFR	No. at Risk				
≥ 60	1467	820	515	297	111
30-59	991	347	225	120	27
15-29	133	34	22	9	4
< 15	40	6	2	1	0

Figure S4. Kaplan Meier curves showing survival of cardiogenic shock patients treated by PCI (n=3,082) for patients with and without OHCA, log-rank p<0.001.



OHCA	No. at Risk				
No	1635	818	483	262	97
Yes	1355	542	365	208	56