

Supplementary information

Table S1. Organic content in aniline wastewater.

Retention time/min	Chemical compound	Molecular formula	Boiling point/ °C	Molecular weight/Da
6.175	aniline	C ₆ H ₇ N	184.4	93
7.344	2,4,6-trimethyldecane	C ₁₃ H ₂₈	204.3	184
8.999	Cyclohexyldimethoxymethylsilane	C ₉ H ₂₀ O ₂ Si	201.2	188
10.444	2,6,10,14-tetramethylheptadecane	C ₂₁ H ₄₄	356.9	296
10.672	N-pentadecane	C ₁₅ H ₃₂	270.0	212
16.304	2,6,10,15-tetramethylheptadecane	C ₂₁ H ₄₄	356.9	296
21.190	Triphenylphosphine oxide	C ₁₈ H ₁₅ OP	360.0	278

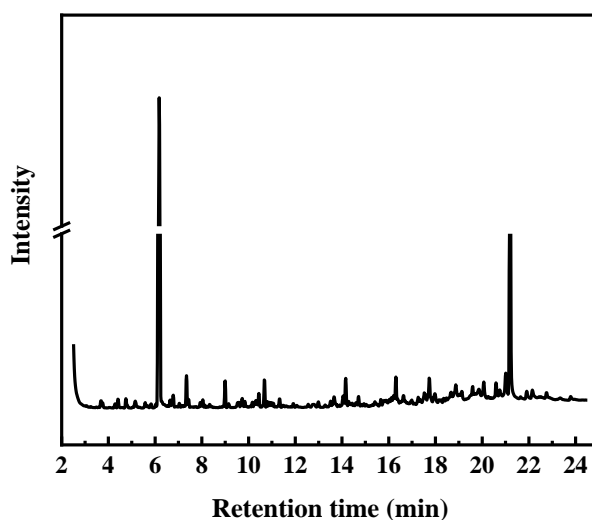


Figure S1 GC-MS spectrum of aniline wastewater.

As we can see, the pore size distribution of the fouled membrane at 0.25 μm -0.30 μm was reduced comparing the original membrane, this is because after the 15h MD operation, the membrane surface was polluted and some membrane pores were blocked, which can also explain that the flux in Figure 3 (b) began to decline at 15h.

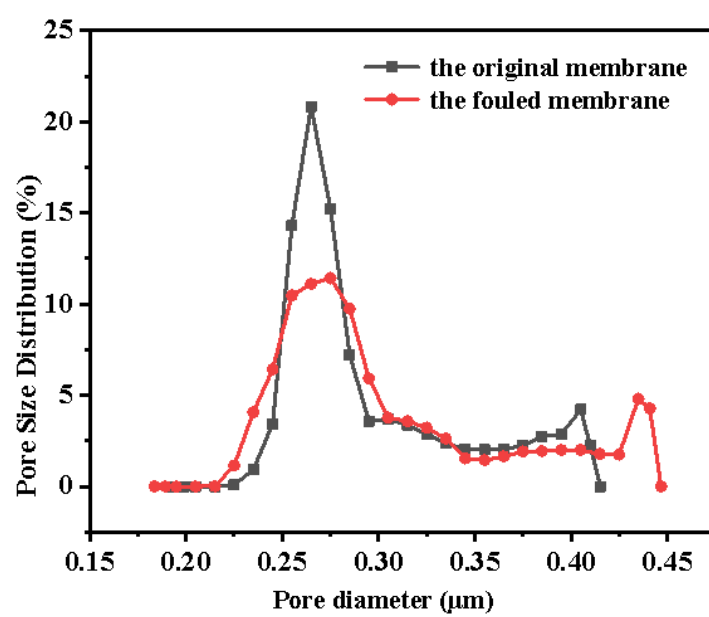


Figure S2. The pore size distribution of the original membrane and the fouled membrane.