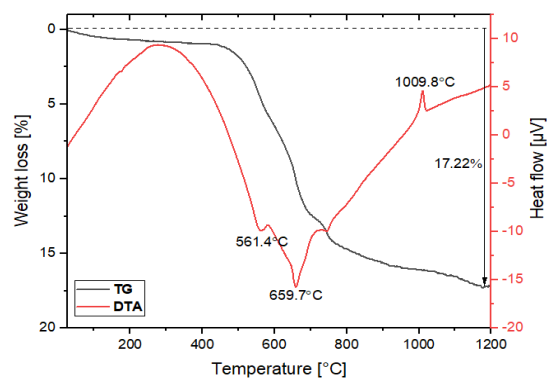
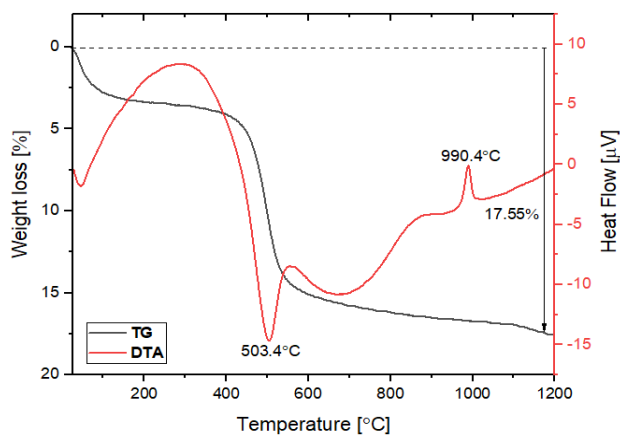


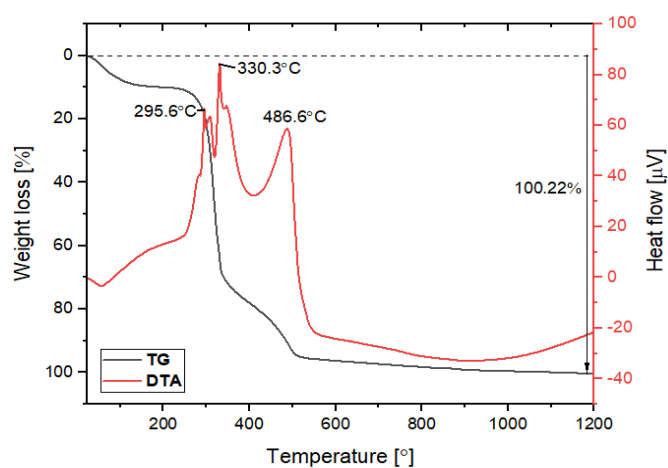
Supplementary Information



(A)



(B)



(C)

Figure S1. TG-DTA curves for kaolin (A), clay (B) and starch(C).

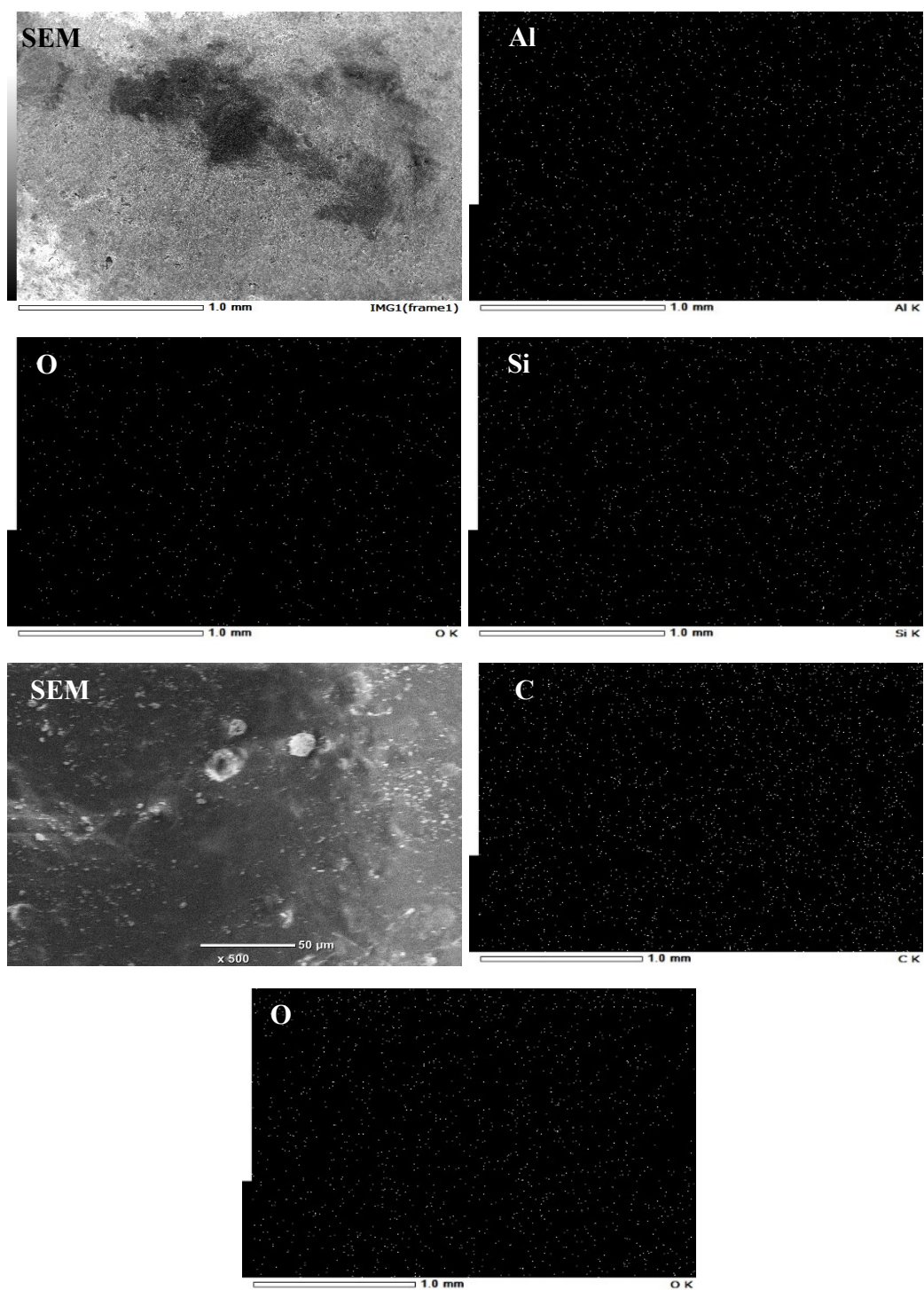


Figure S2. SEM images and mapping images of CMs before coating and after coated with cross-linked chitosan.

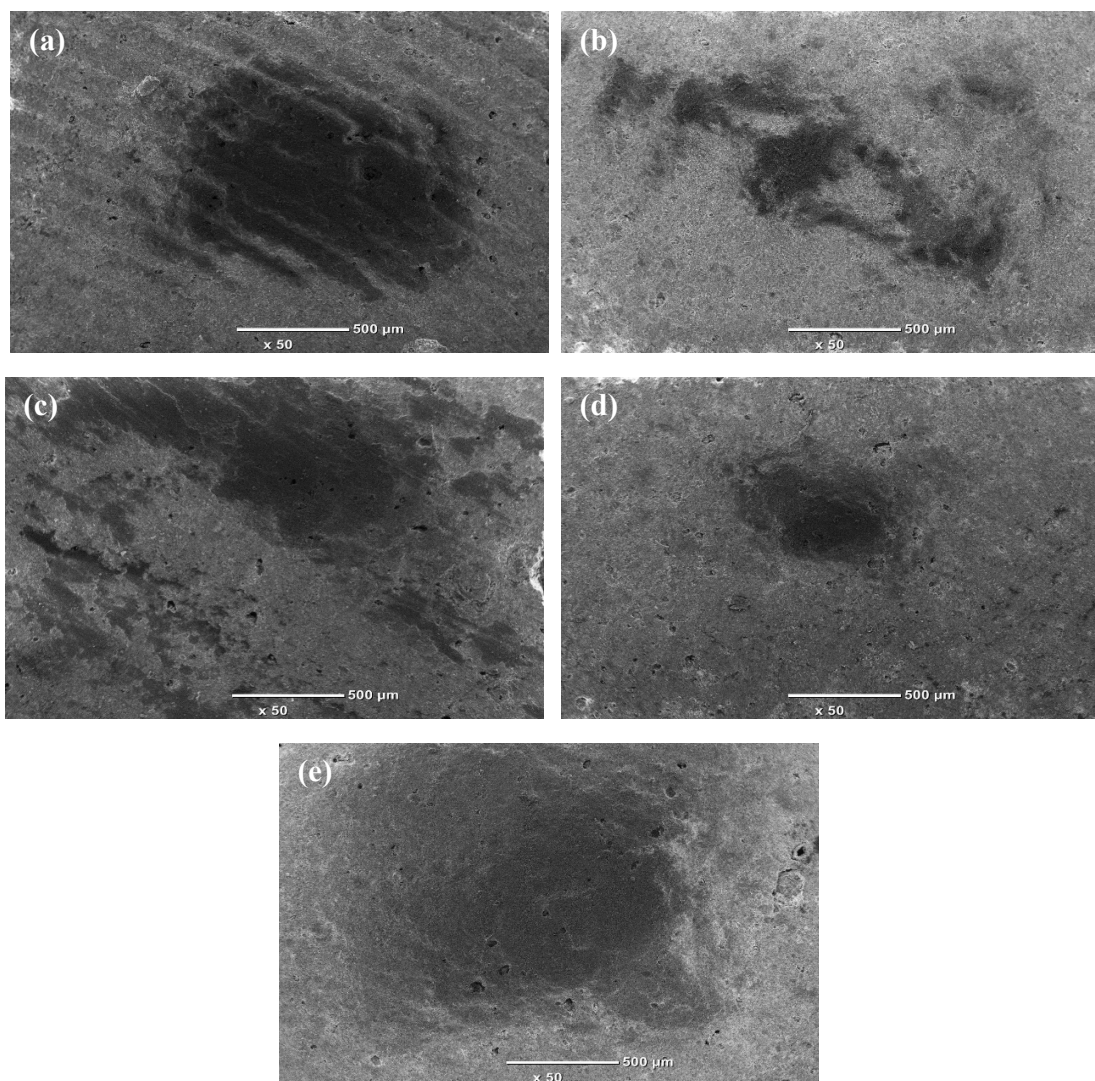


Figure S3. SEM images of CMs surface after sintered at 950°C (a), 1000°C(b), 1050°C(c), 1100°C(d) and 1150°C(e) for 3h.