

## Autopsy of used reverse osmosis membranes from the largest seawater desalination plant in Oman

Mohammed Al-Abri<sup>a,b,\*</sup>, Htet Htet Kyaw<sup>a</sup>, Buthayna Al-Ghafri<sup>a</sup>, Myo Tay Zar Myint<sup>c</sup>, Sergey Dobretsov<sup>d,e</sup>

<sup>a</sup> Nanotechnology Research Center, Sultan Qaboos University, P.O. Box 33, Al-Khoud, Muscat 123, Oman

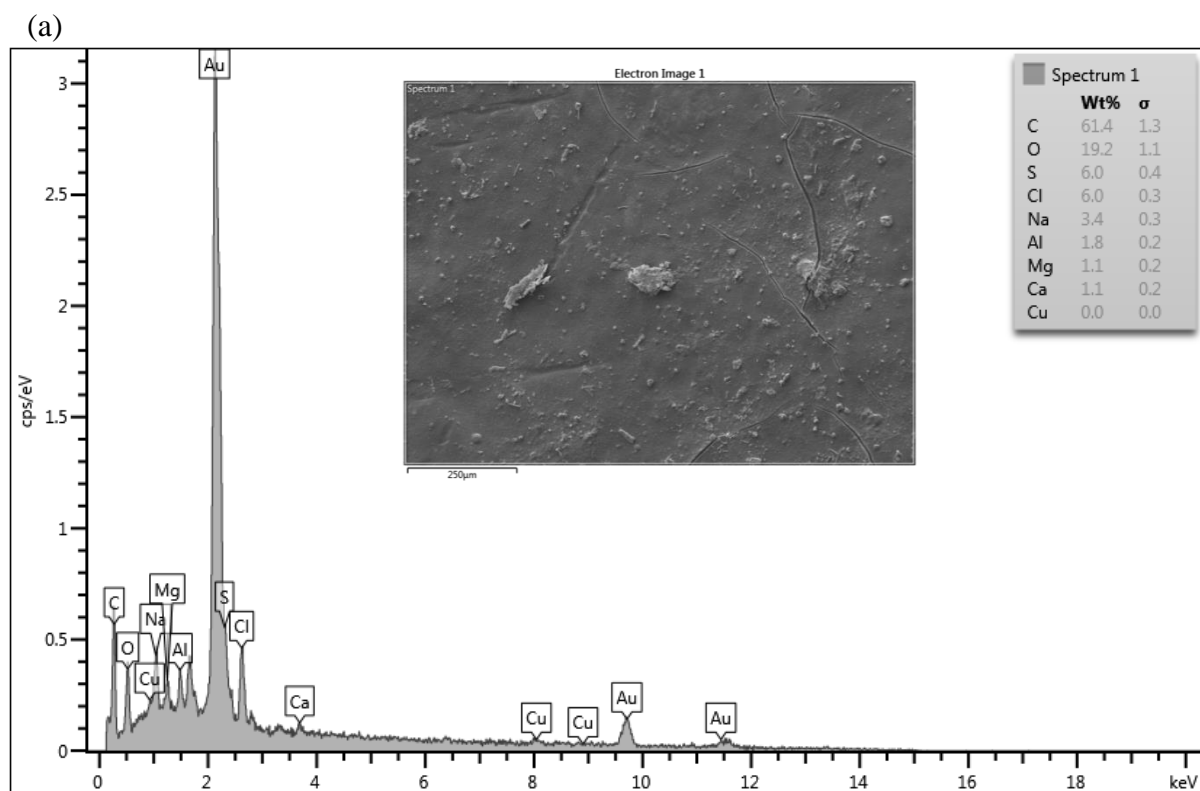
<sup>b</sup> Department of Petroleum and Chemical Engineering, College of Engineering, Sultan Qaboos University, P.O. Box 33, Al Khoudh, Muscat 123, Oman

<sup>c</sup> Department of Physics, College of Science, Sultan Qaboos University, P.O Box 36, Al-Khoud, Muscat 123, Oman

<sup>d</sup> Department of Marine Science and Fisheries, College of Agricultural & Marine Sciences, Sultan Qaboos University, PO Box 34, Al-Khouthd, Muscat 123, Oman

<sup>e</sup> Center of Excellence in Marine Biotechnology, Sultan Qaboos University, PO Box 50, Al-Khouthd, Muscat 123, Oman

\*Corresponding Author: [alabri@squ.edu.om](mailto:alabri@squ.edu.om)



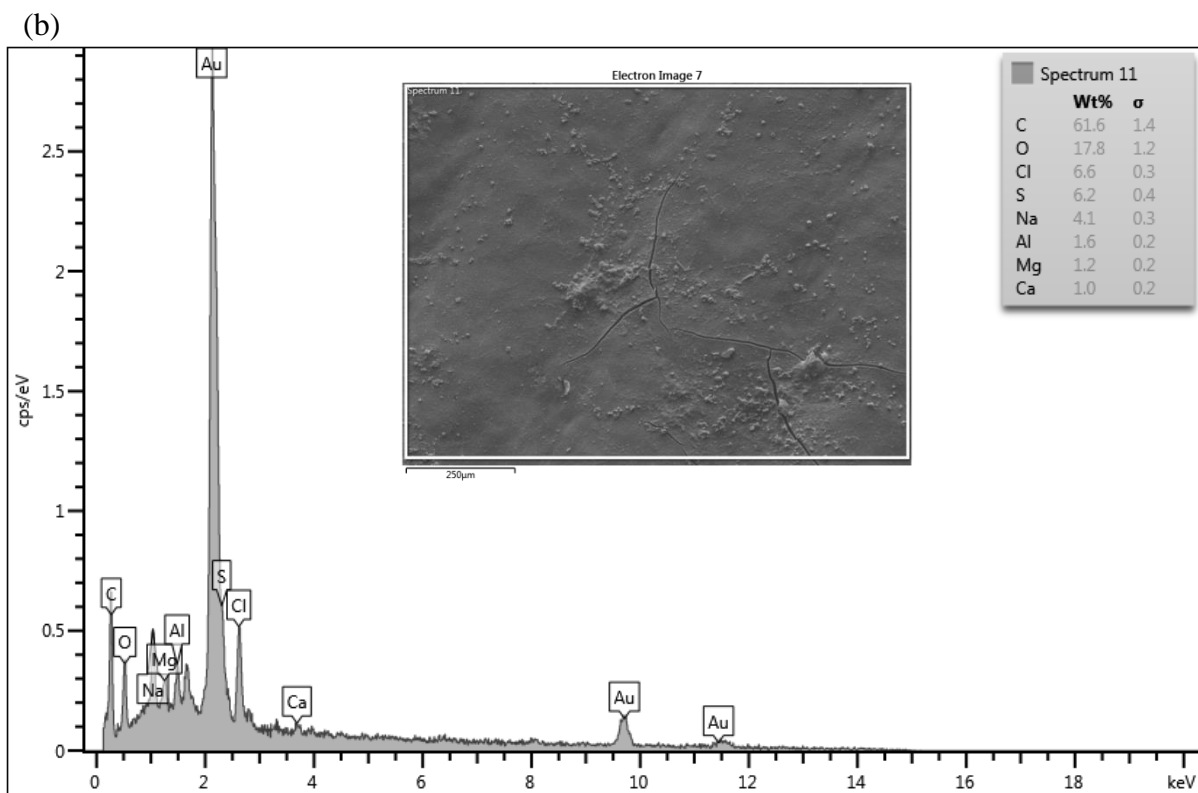
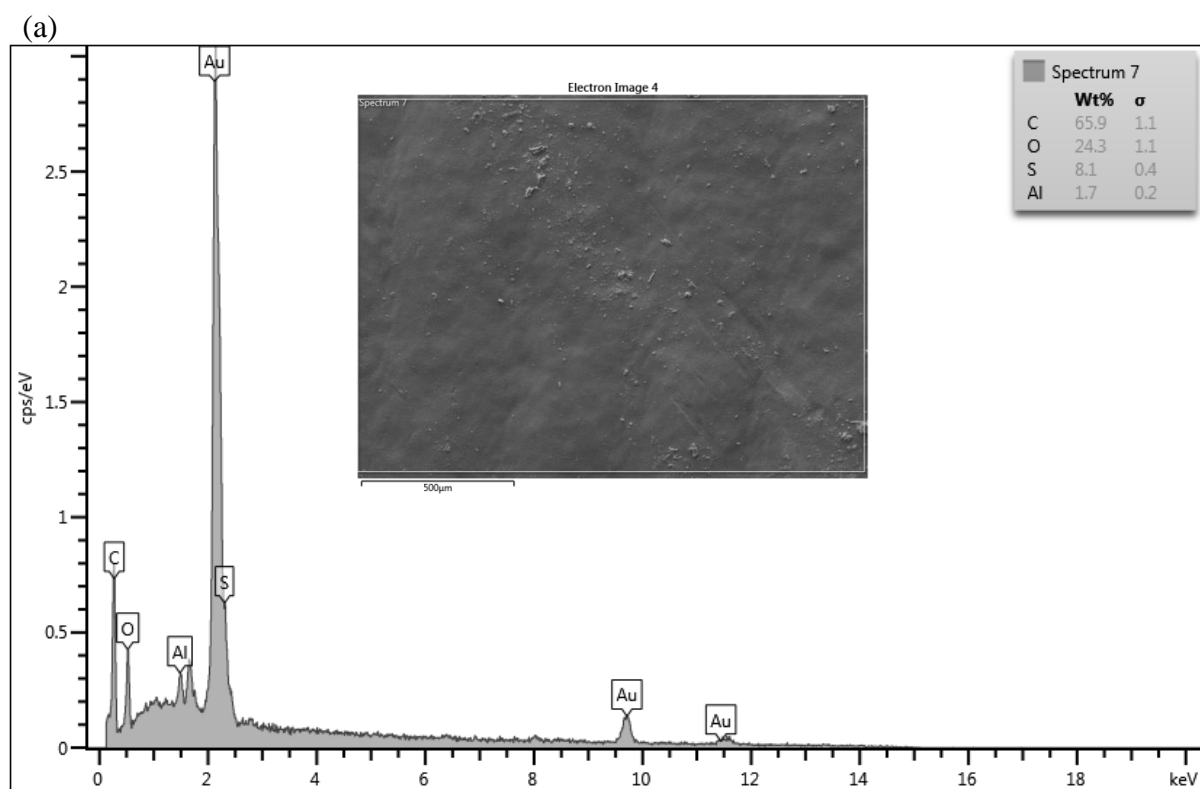


Figure S1. SEM-EDX analysis of (a) P1 and (b) P2 membranes.



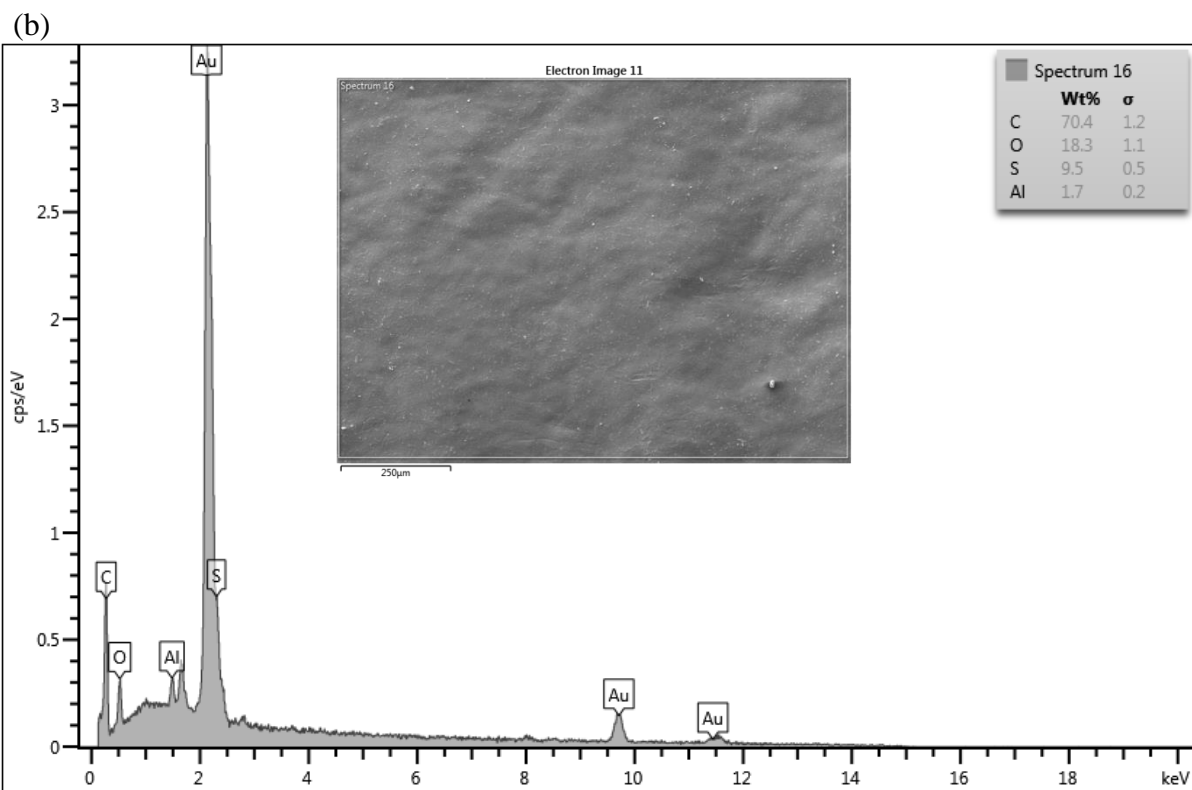


Figure S2. SEM-EDX analysis of (a) P1-clean and (b) P2-clean membranes.

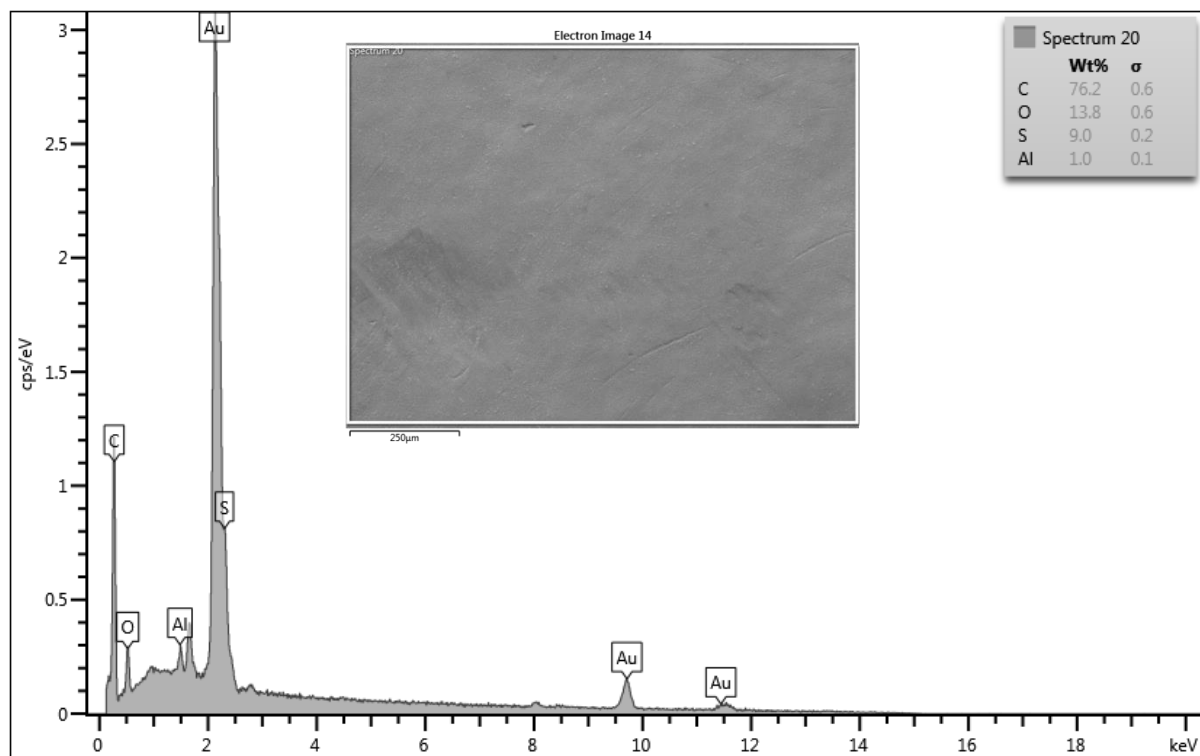


Figure S3. SEM-EDX analysis of virgin sea water membrane

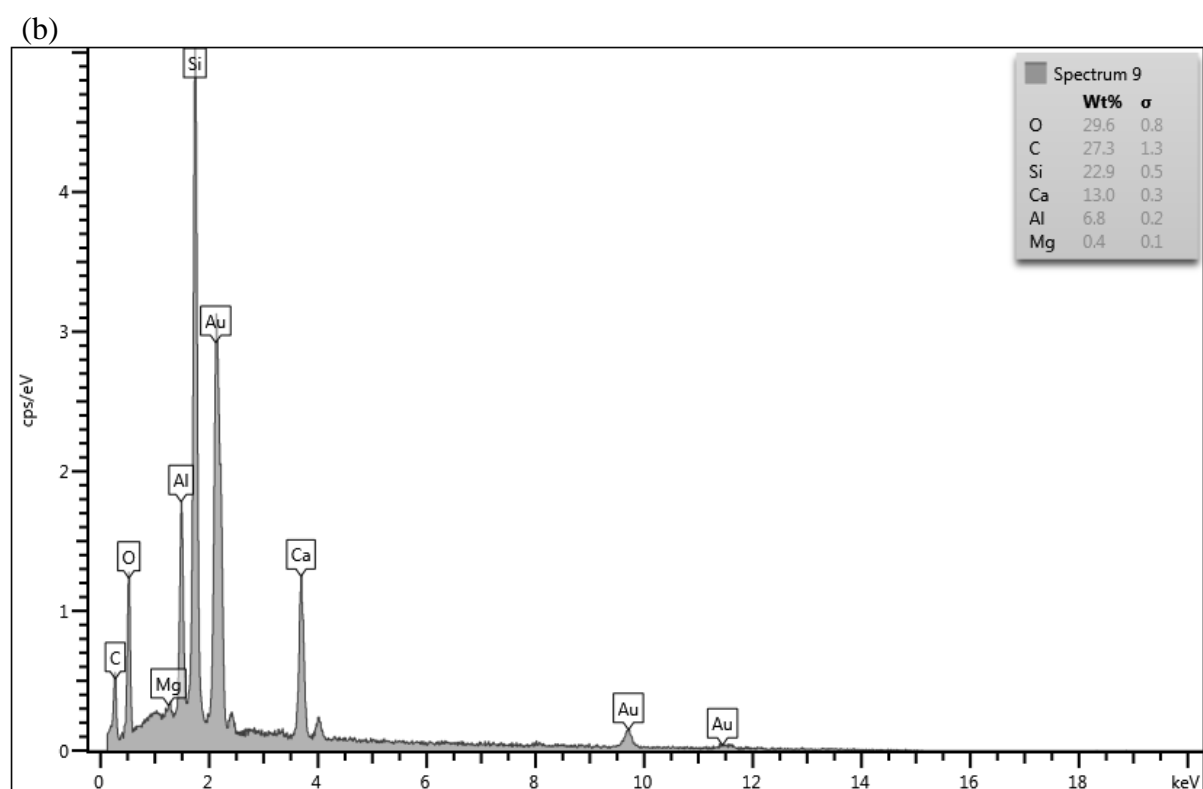
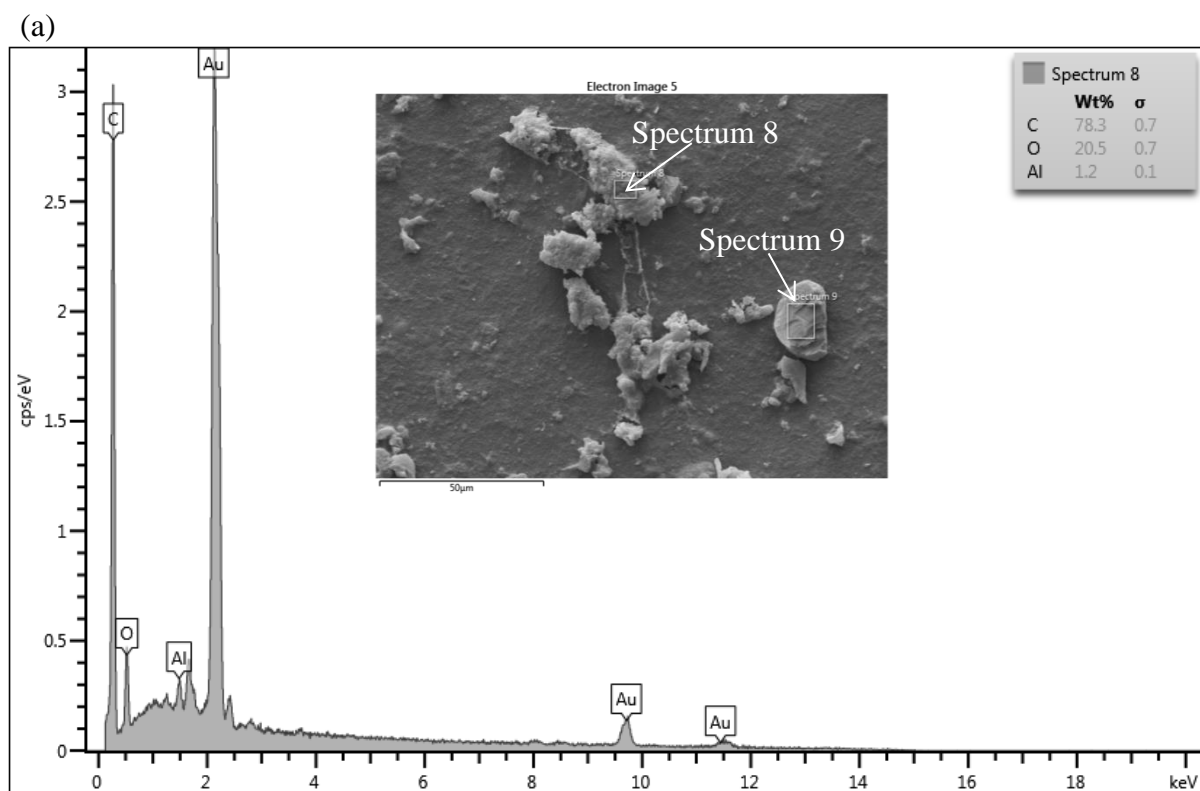


Figure S4. SEM-EDX analysis of some deposits attached on the P1-clean surface (a) spectrum 8 and (b) spectrum 9

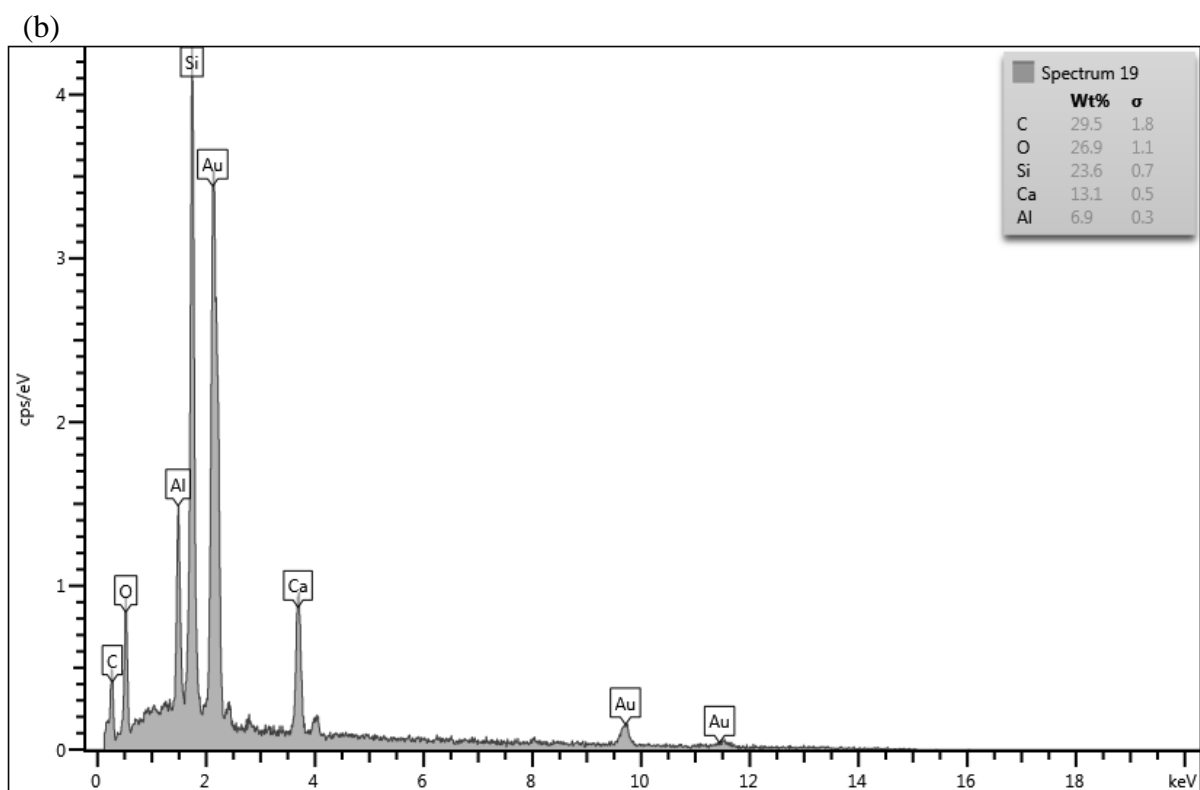
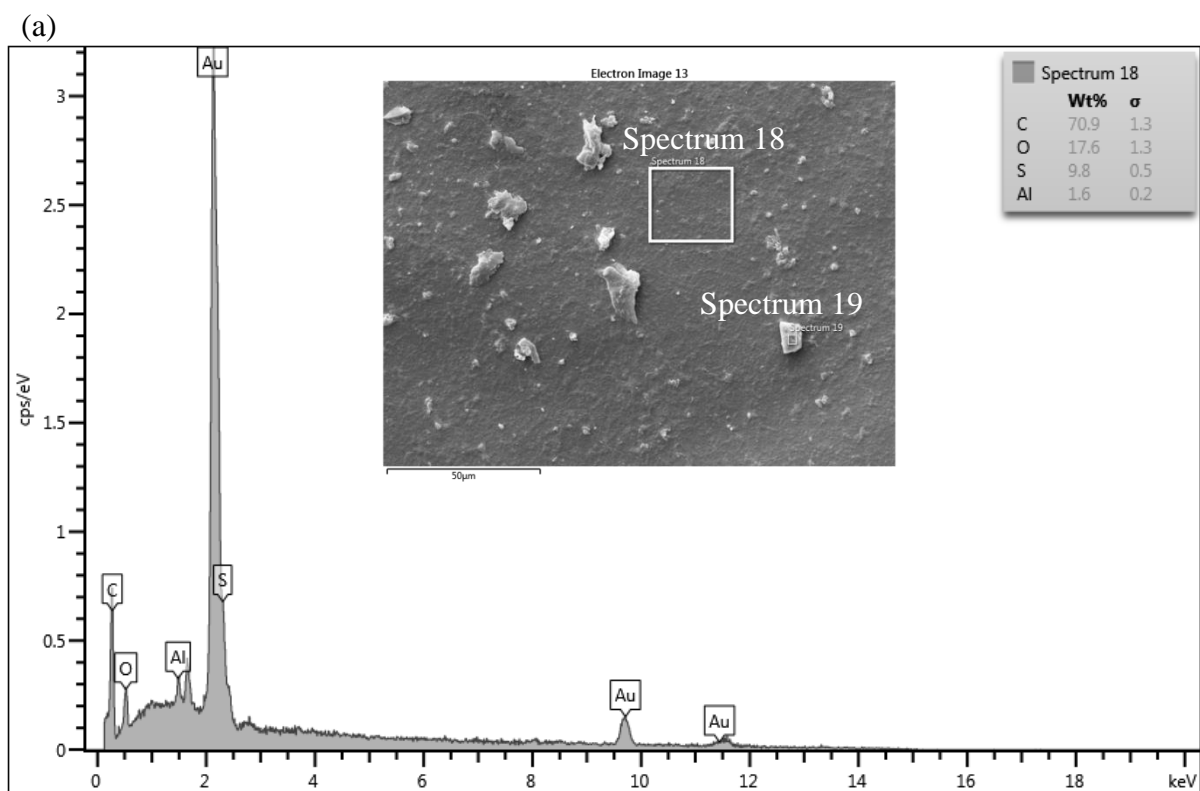


Figure S5. SEM-EDX analysis of some deposits attached on the P2-clean surface (a) spectrum 18 and (b) spectrum 19