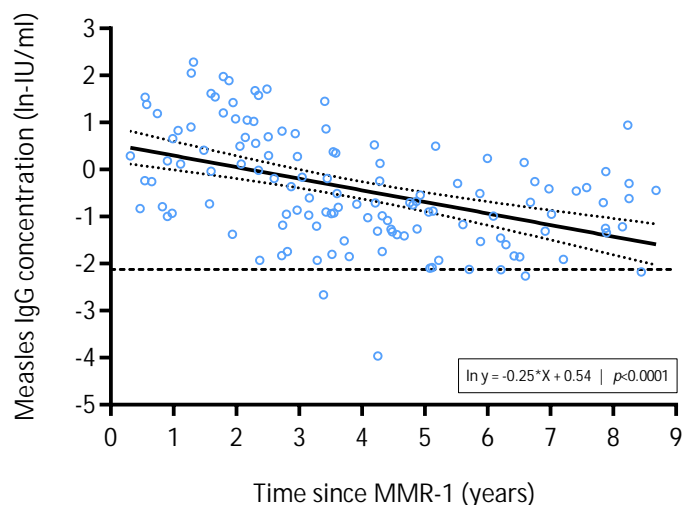


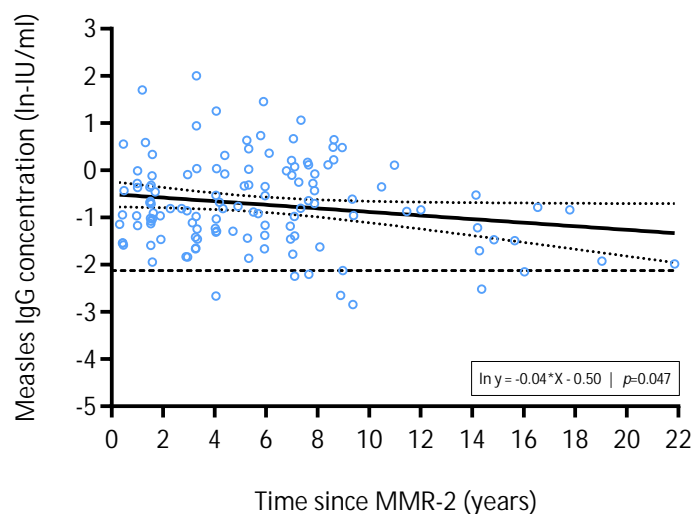
A: Measles 1 dose

$n=128$



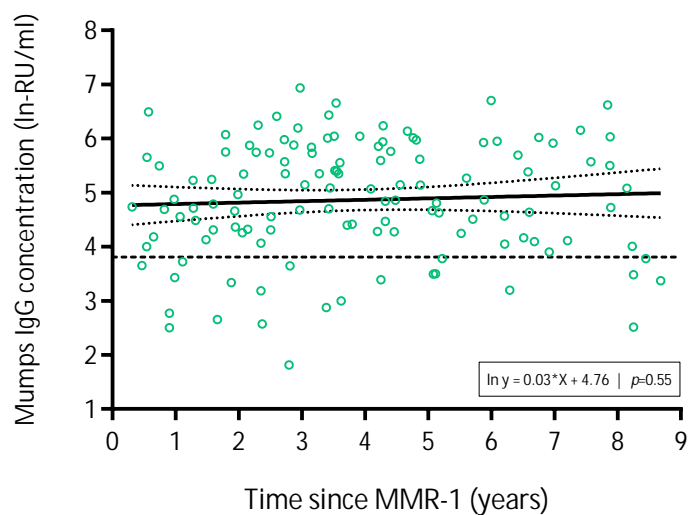
B: Measles 2 doses

$n=126$



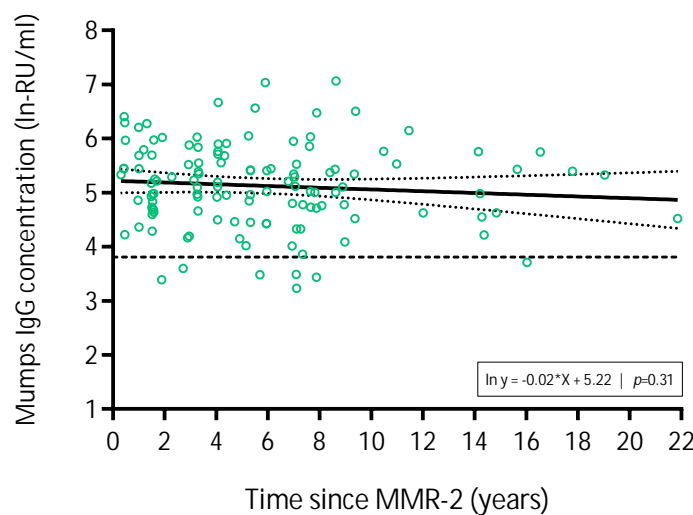
C: Mumps 1 dose

$n=125$



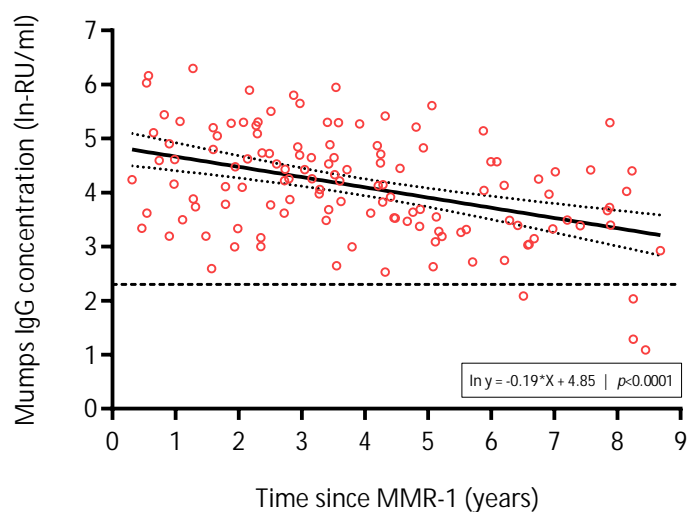
D: Mumps 2 doses

$n=124$



E: Rubella 1 dose

$n=128$



F: Rubella 2 doses

$n=126$

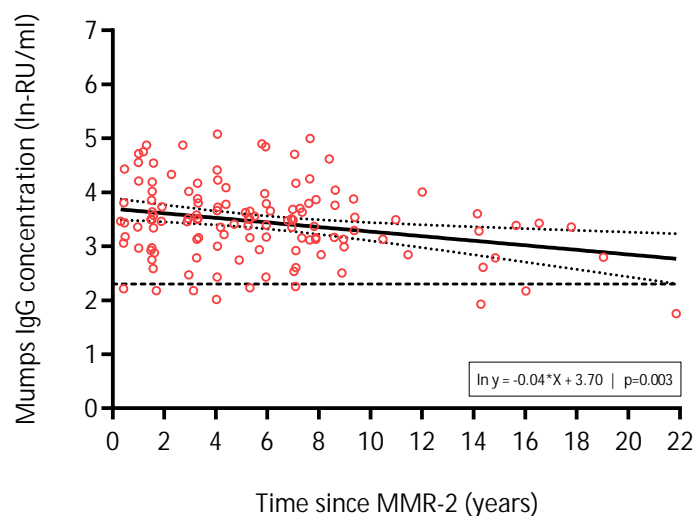


Figure S4. Persistence of measles (A & B), mumps (C & D), and rubella (E & F) IgG antibodies (ln-international units (IU) or RIVM units (RU)/ml) after one and two doses of MMR-vaccination among participants from the Dutch overseas territories. Note: the solid line represents the fitted model via linear regression analyses, the small dotted lines the 95% confidence intervals, and the dashed lines the ln-cutoff for seropositivity.