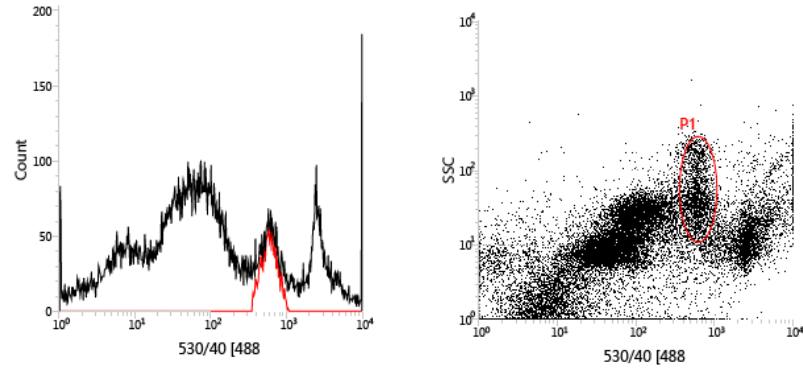
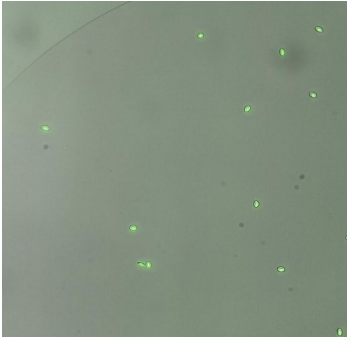


Figure S1: FACS single-cell sorting of HK-RBCs and PB-RBCs. A) Representative dotplot and histogram showing selected population for FACS single-cell sorted HK-RBCs using BD FACSJazz™ cell sorter. B) 10^2 purified HK-RBCs and C) 10^6 purified PB-RBCs stained with SYTO RNaselect and purified by FACS using BD FACSJazz™ cell sorter for transcriptome analysis. Brightfield and FITC images were taken at 10× magnification. D) RBCs after Ficoll gradient purification for proteome analysis. The brightfield image was taken at 20× magnification. Images were taken with the IN Cell Analyzer 6000 Cell Imaging system.

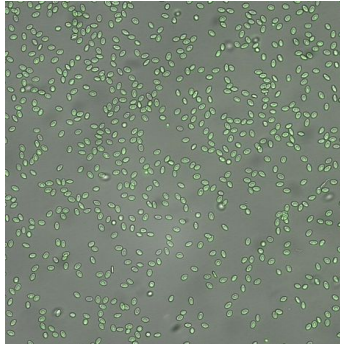
A



B



C



D

