

Figure S1. Flow cytometric analysis of T lymphocyte subsets labeled with rabbit polyclonal antibodies against CD4-1, CD4-2 and CD8 β in PBLs, SPLs and HKLs.

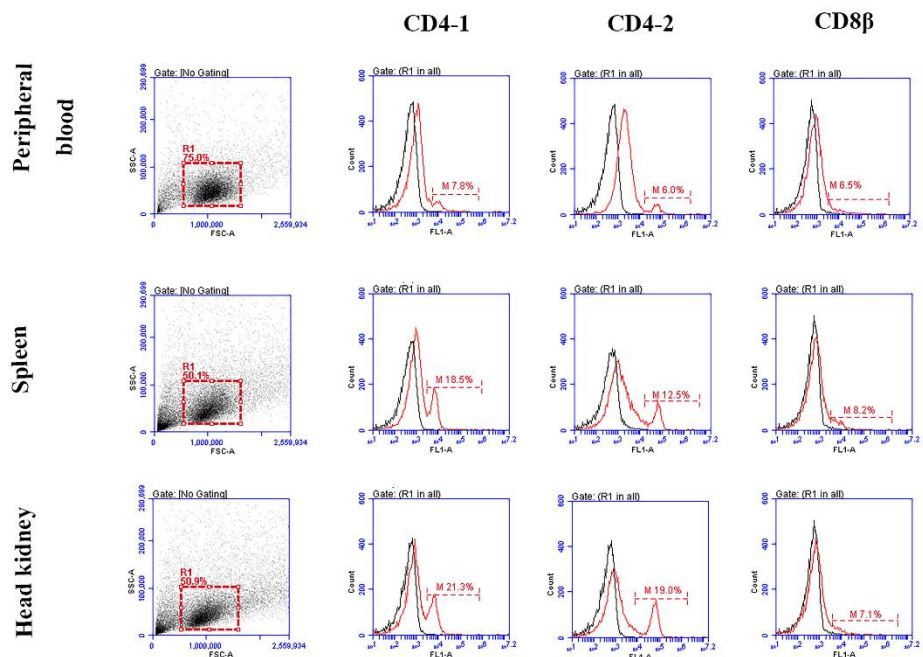


Figure S2. Flow cytometric analysis of IgM+ lymphocytes labeled with anti-serum IgM MAb 2D8.

