

Figure S1.

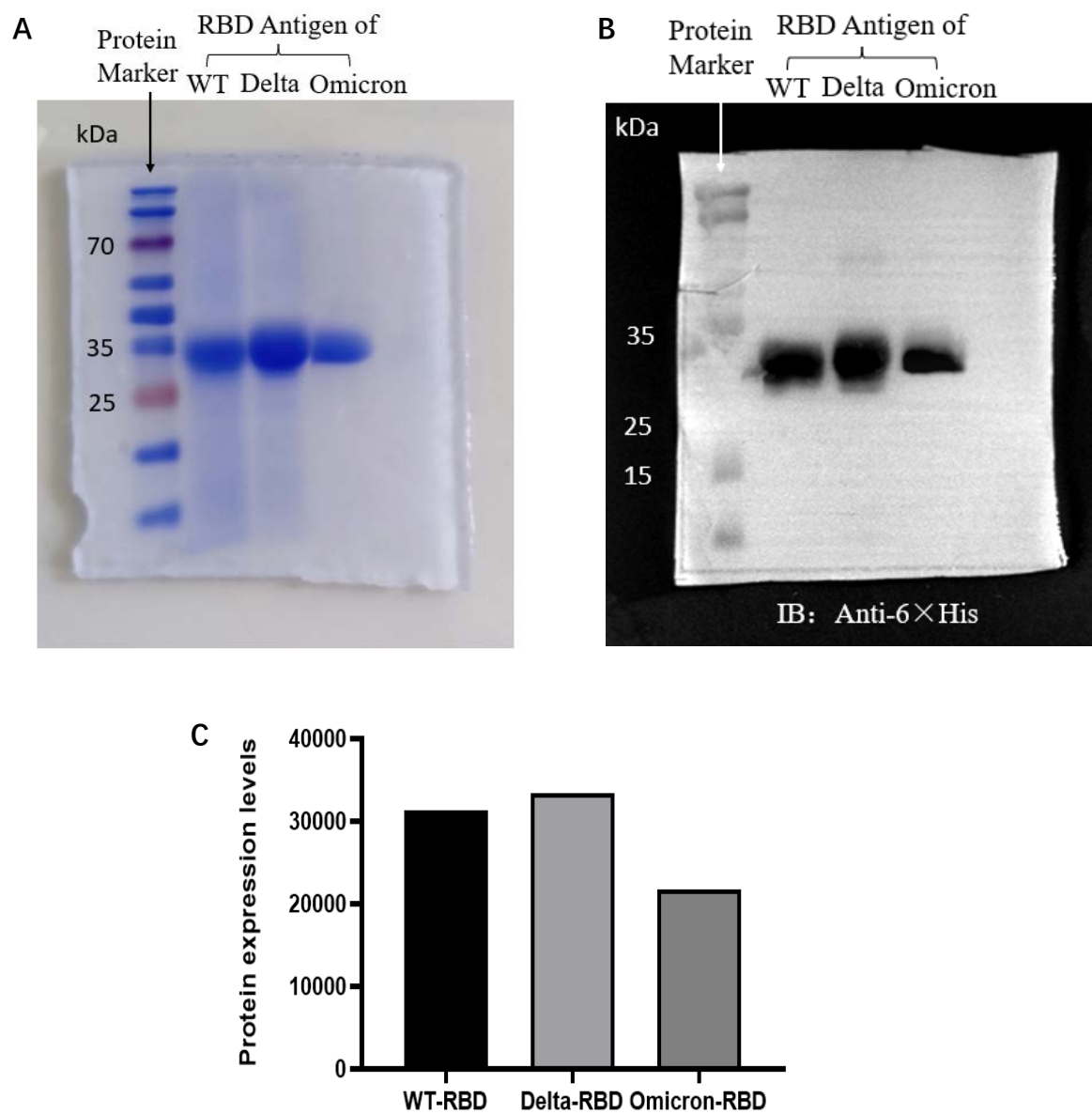


Figure S1. Expression and purification of soluble antigenic protein RBD. (A) The report of Coomassie brilliant blue staining gel, original, uncropped and unadjusted images. (B) The report of western blot, original, uncropped and unadjusted images. (C) The report of Western Blot gray values. (A, B, C) Purchased Omicron-RBD antigen protein was used as a control.