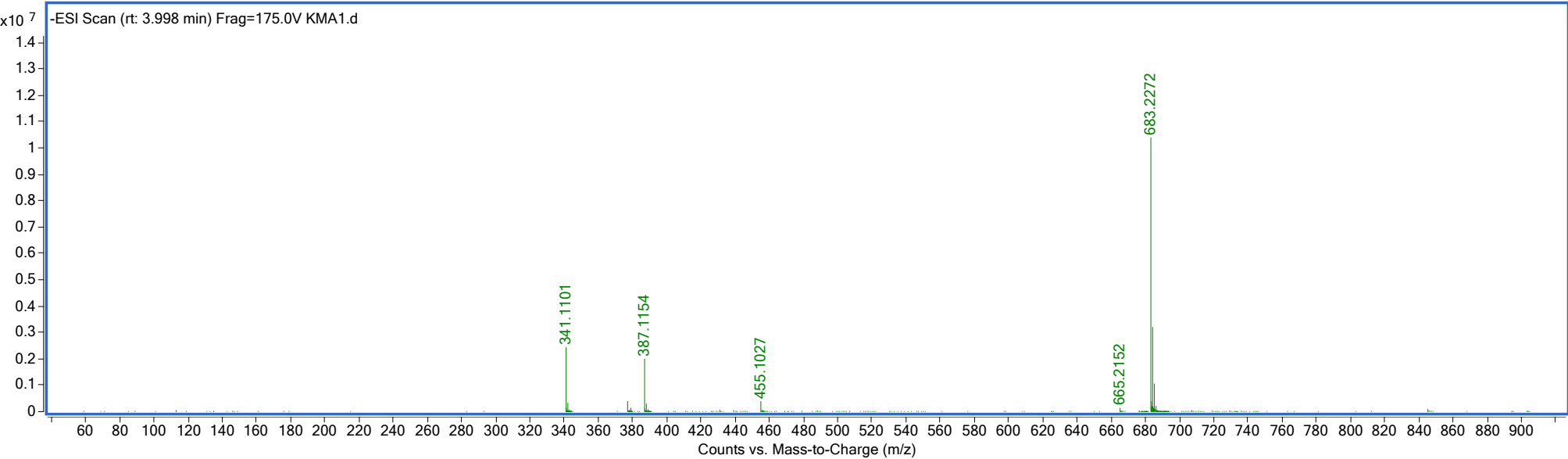
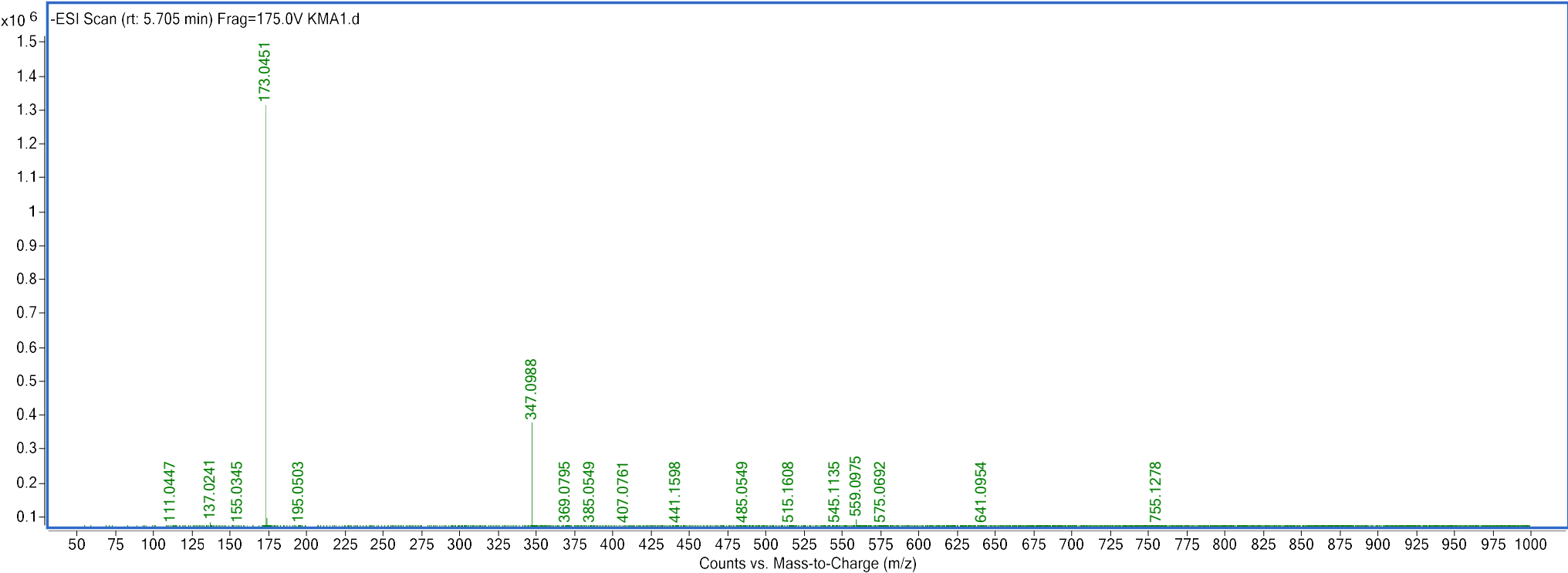


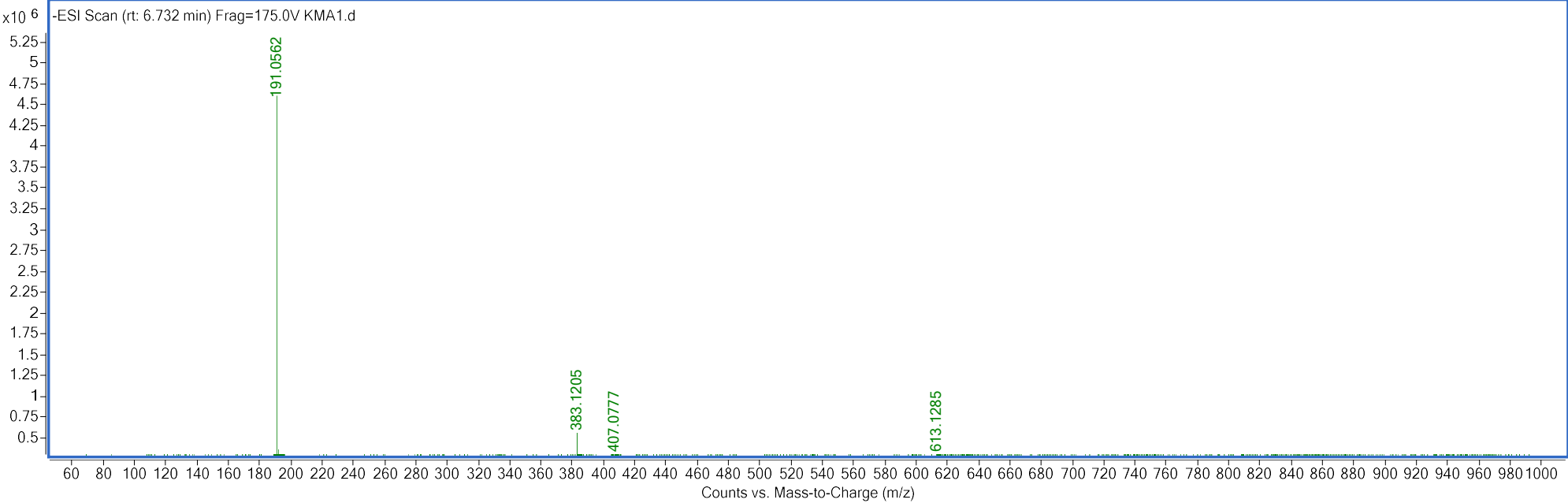
Figure S3. Mass spectra of compounds detected in SKS extract by HPLC-ESI-MS(Q-TOF)
Signal 1: 3.998 min. 3-β-Galactopyrasonyl glucose (C₁₂H₂₂O₁₁)



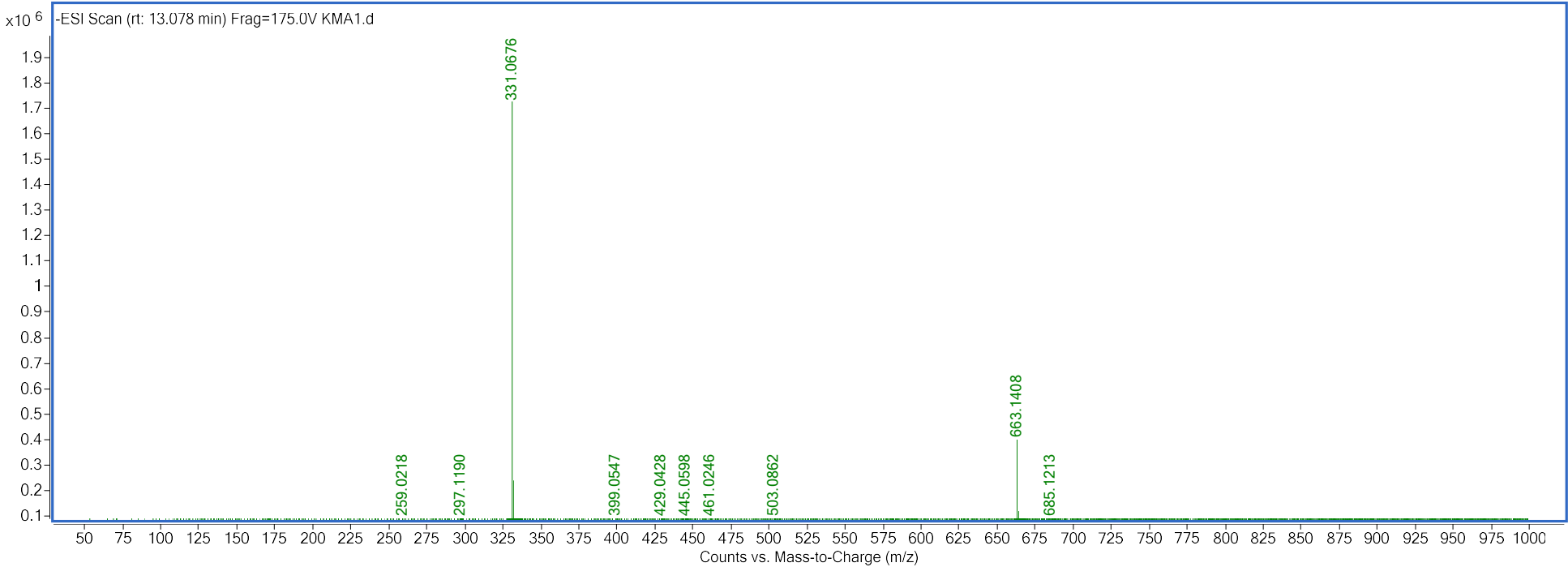
Signal 2: 5.705 min. Shikimic acid (C₇H₁₀O₅)



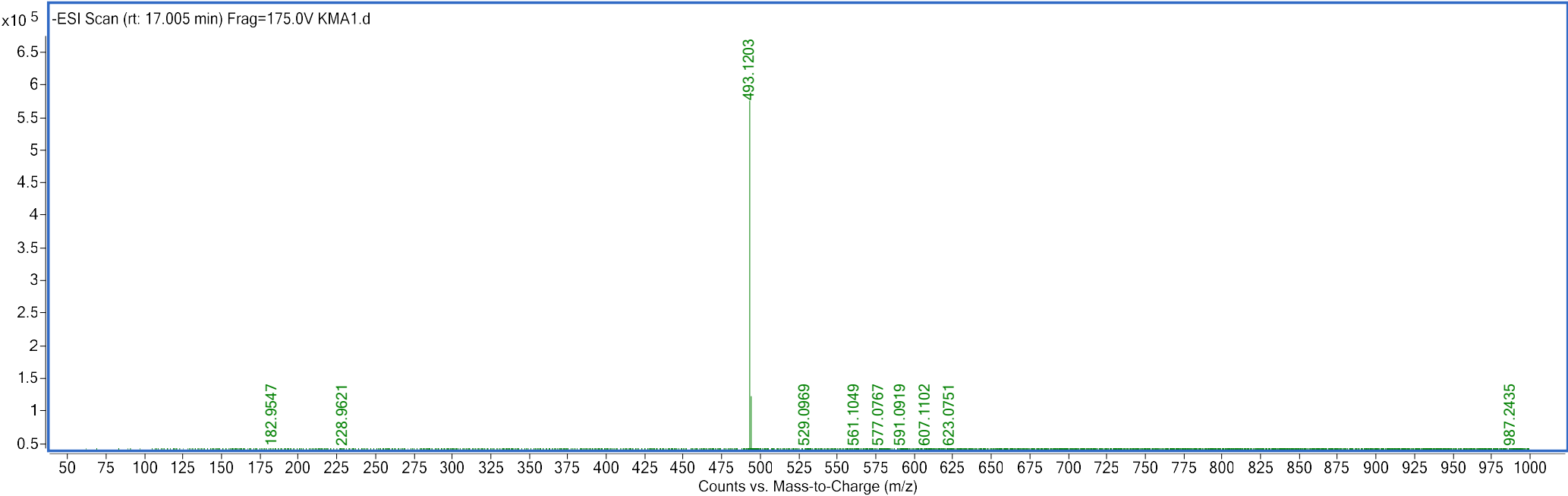
Signal 3: 6.732 min. Quinic acid (C₇H₁₂O₆)



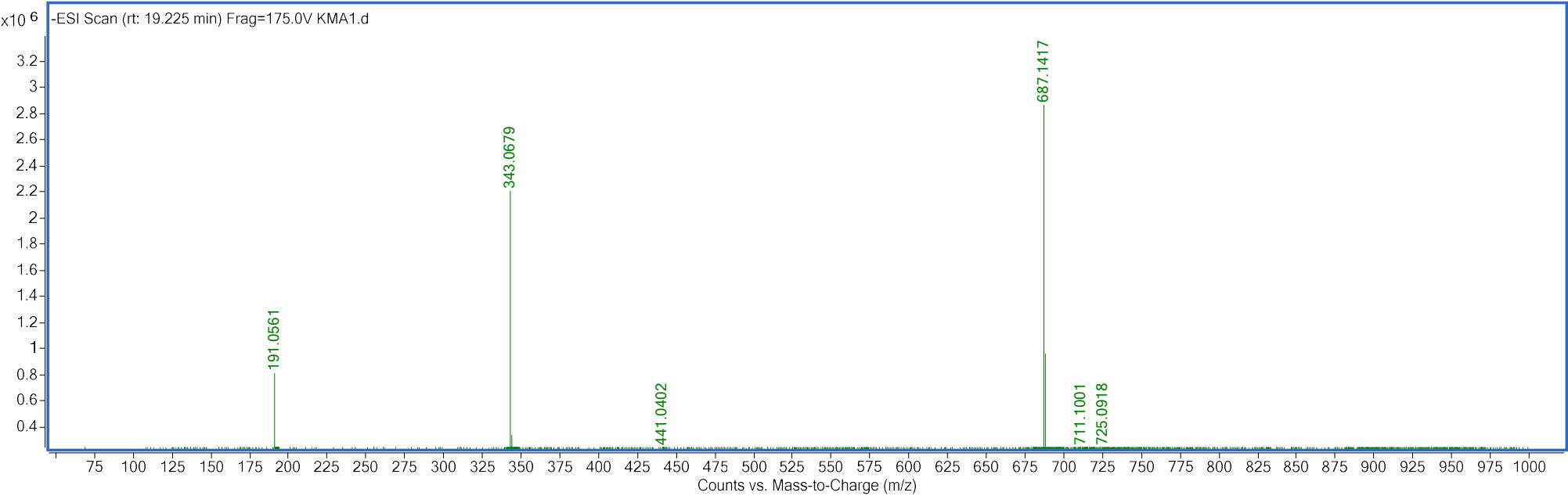
Signal 4: 13.078 min. Galloylglucose (C₁₃H₁₆O₁₀)



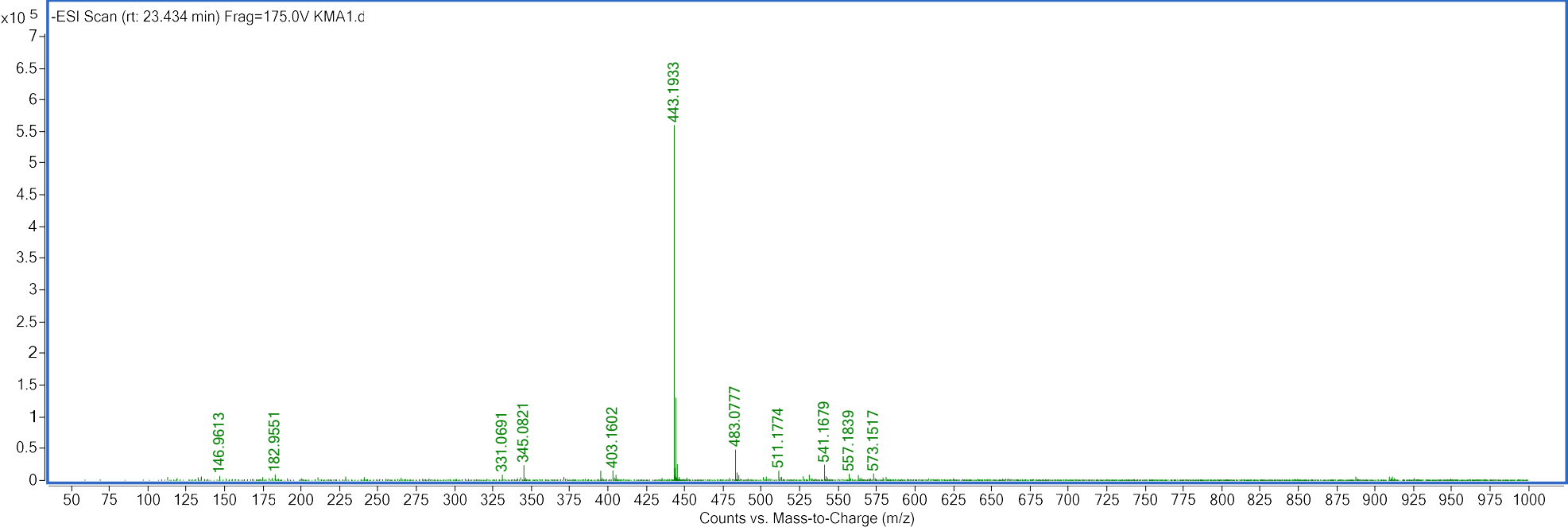
Signal 5: 17.005 min. Galloyl diglucoside (C₁₉H₂₆O₁₅)



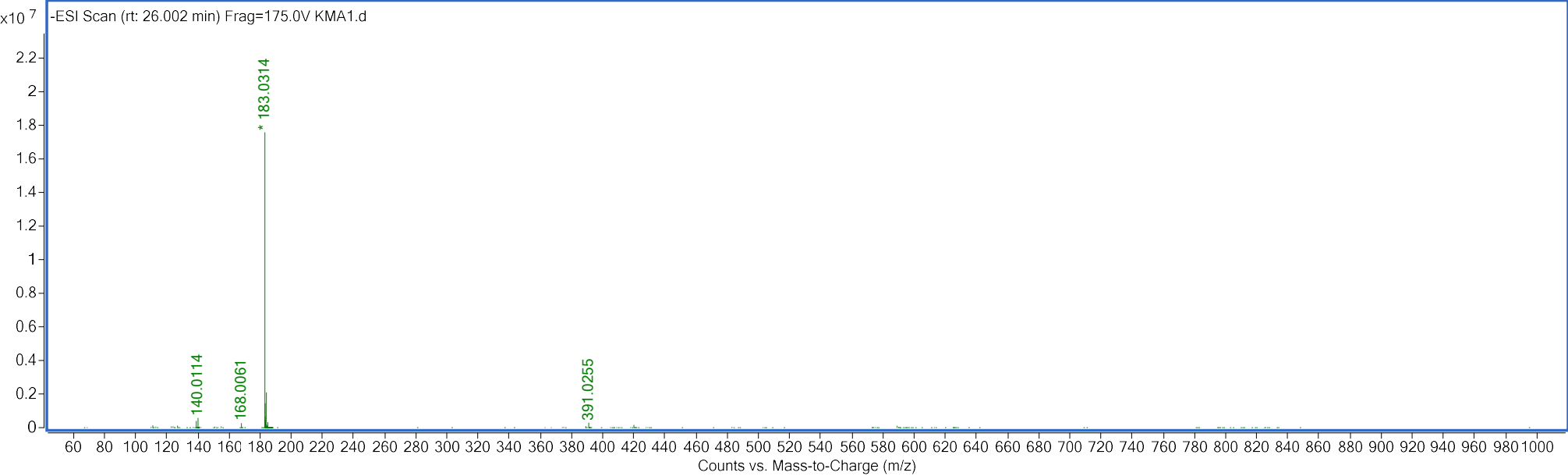
Signal 6: 19.225 min. 5-O-Galloylquinic acid (C₁₄H₁₆O₁₀)



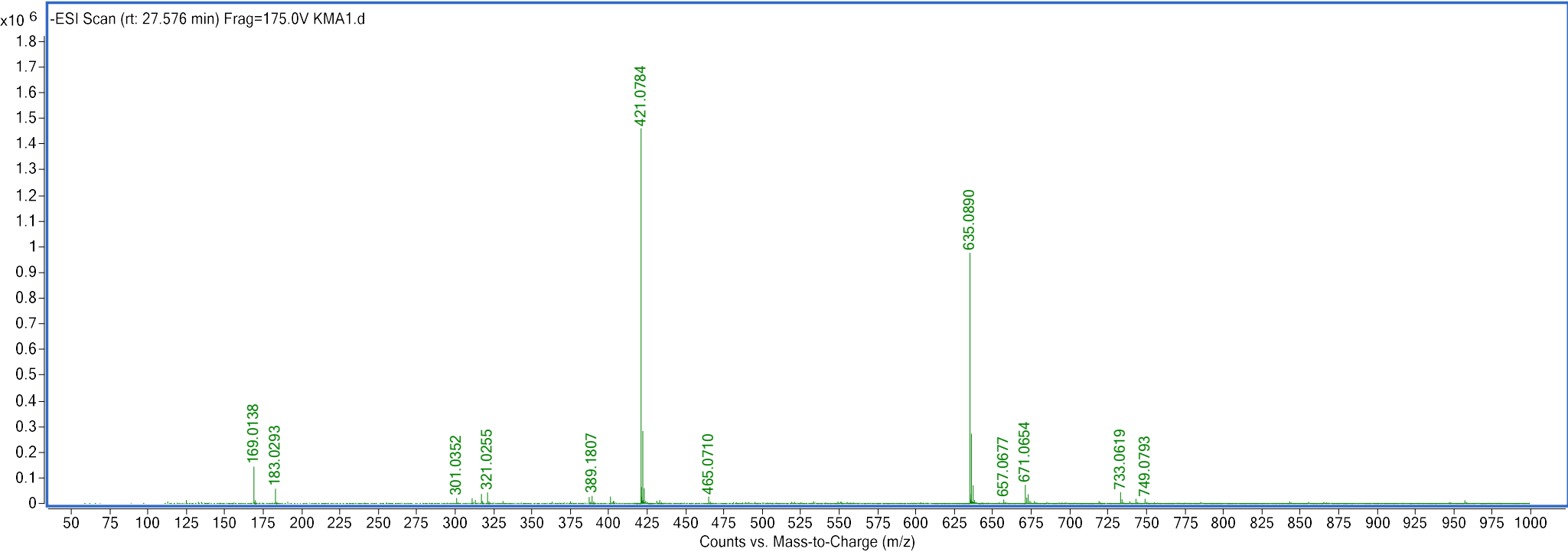
Signal 7: 23.434 min. NI



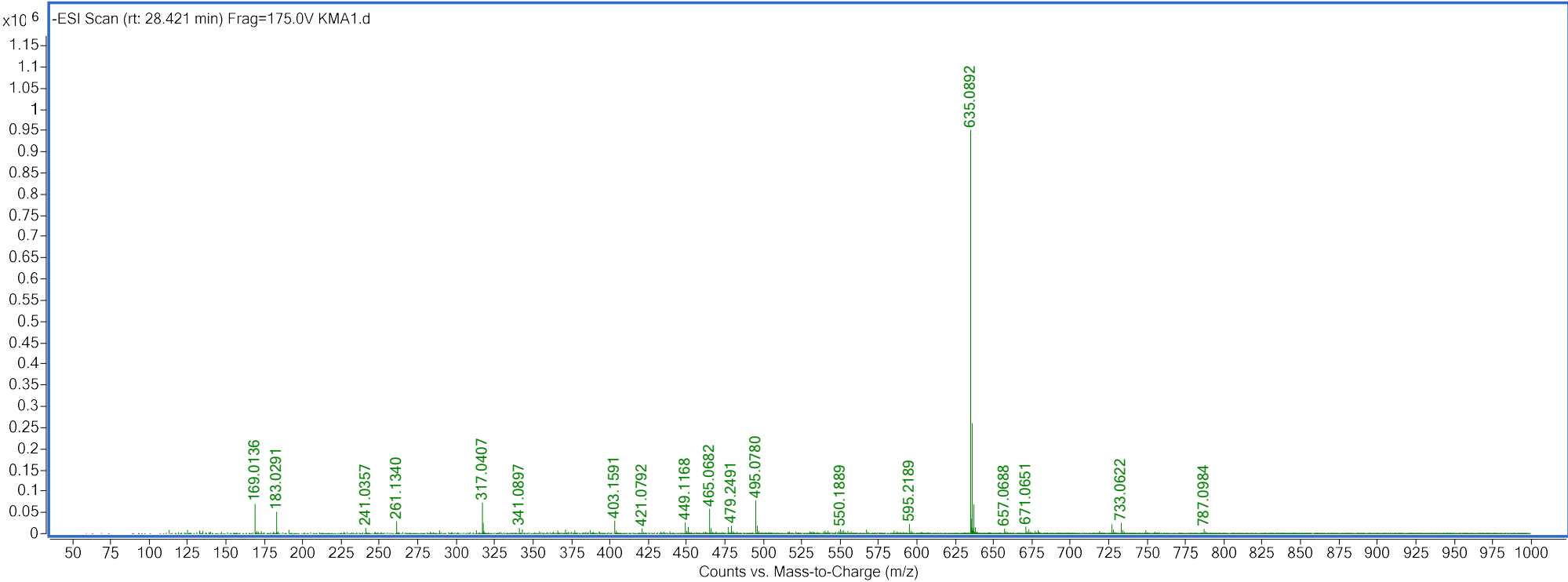
Signal 8: 26.002 min. NI



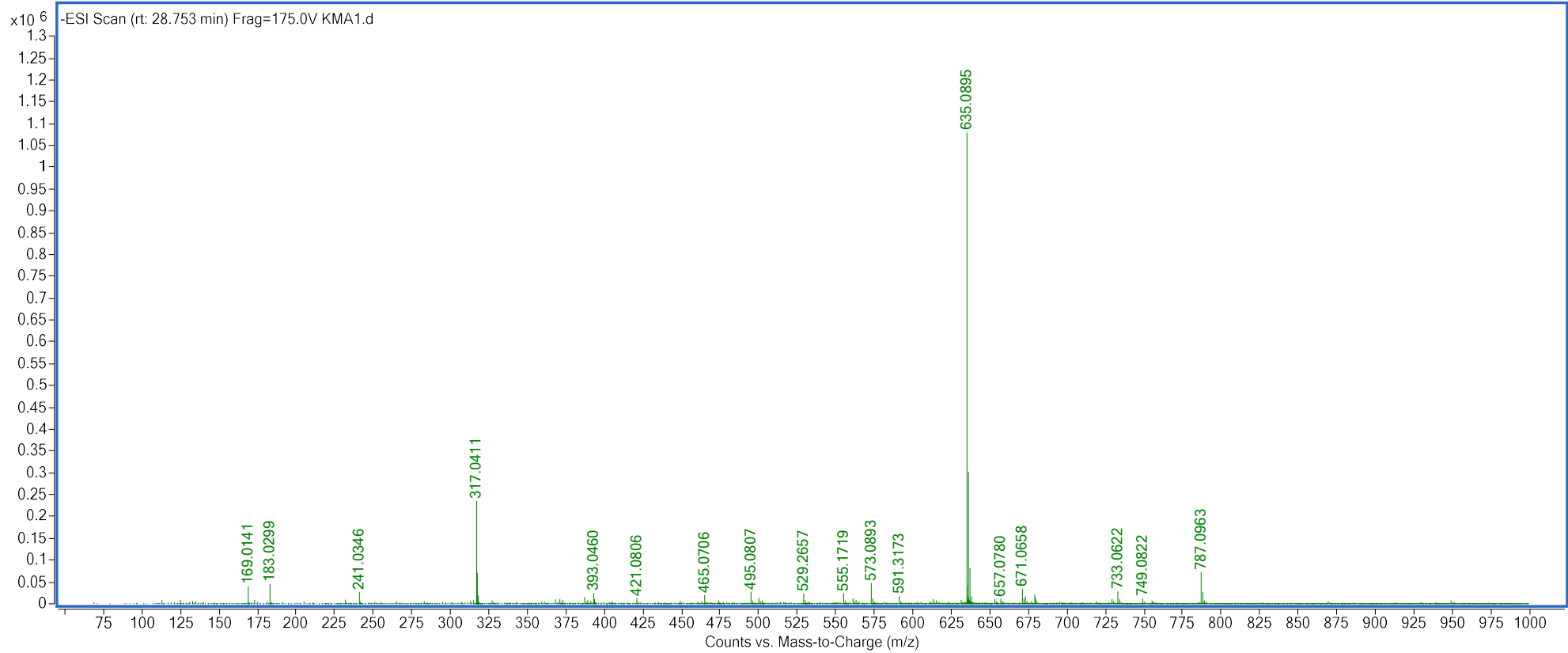
Signal 9: 27.576 min. Mangiferin (C₁₉H₁₈O₁₁)



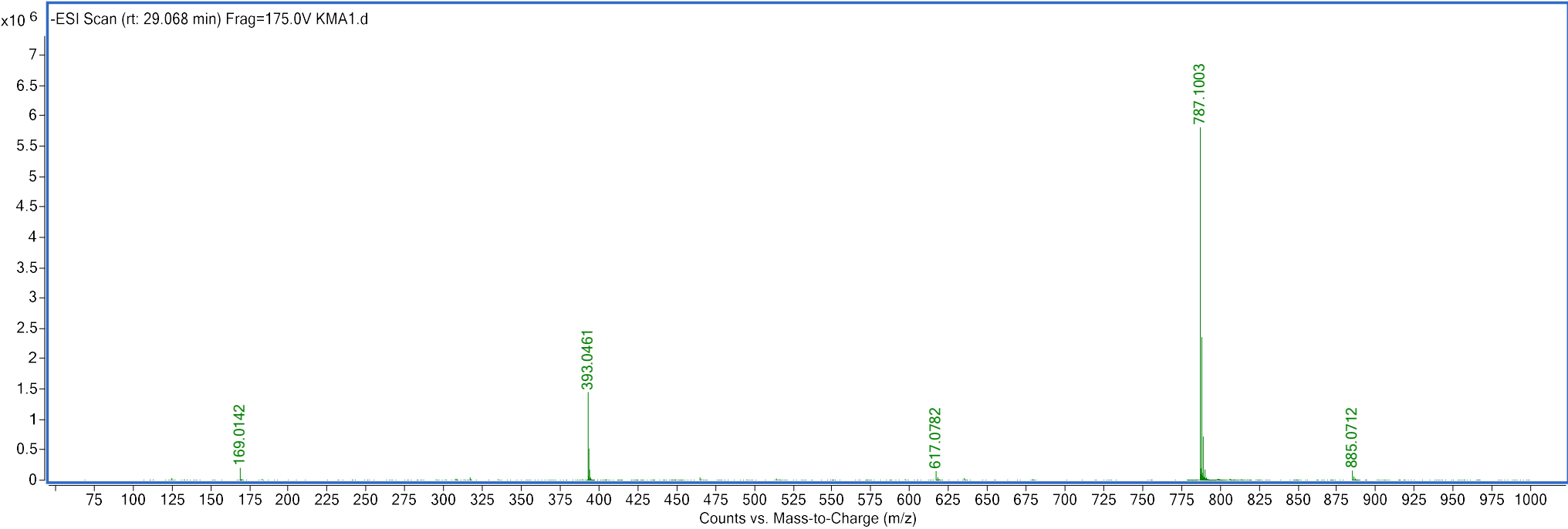
Signal 10: 28.421 min. Trigalloyl glucose Isomer I (C₂₇H₂₄O₁₈)



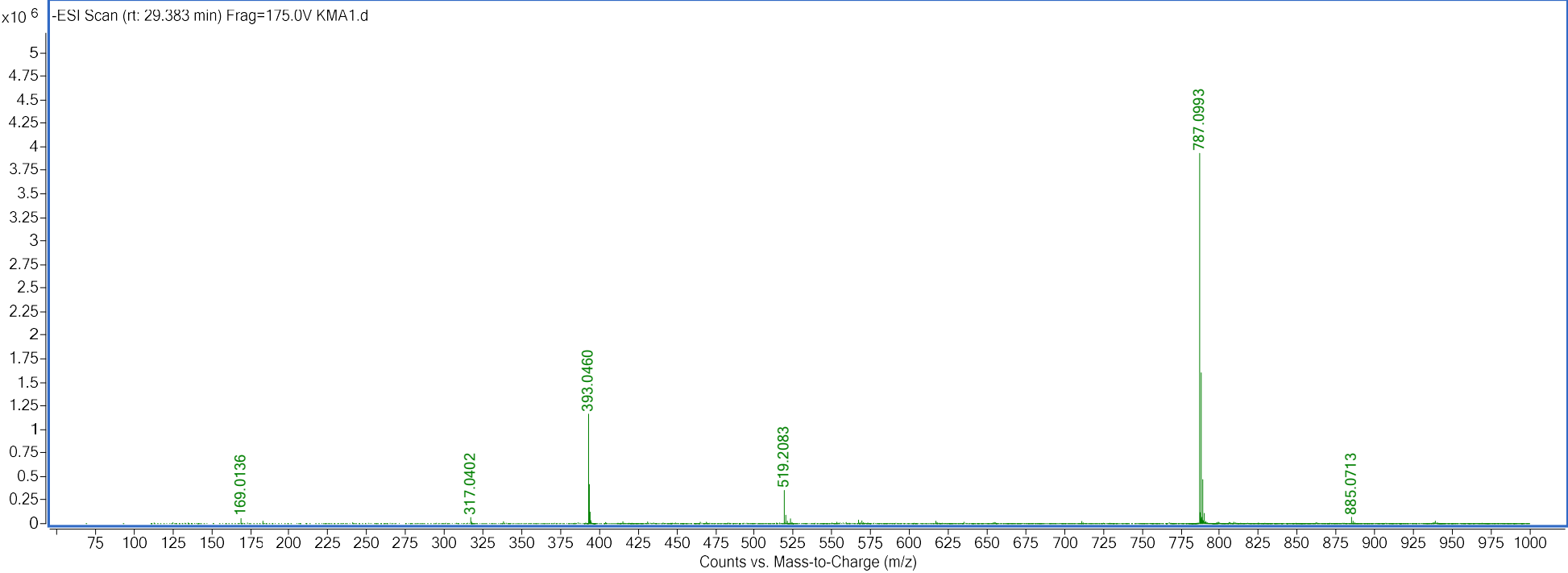
Signal 11: 28.753 min. Trigalloyl glucose Isomer II (C₂₇H₂₄O₁₈)



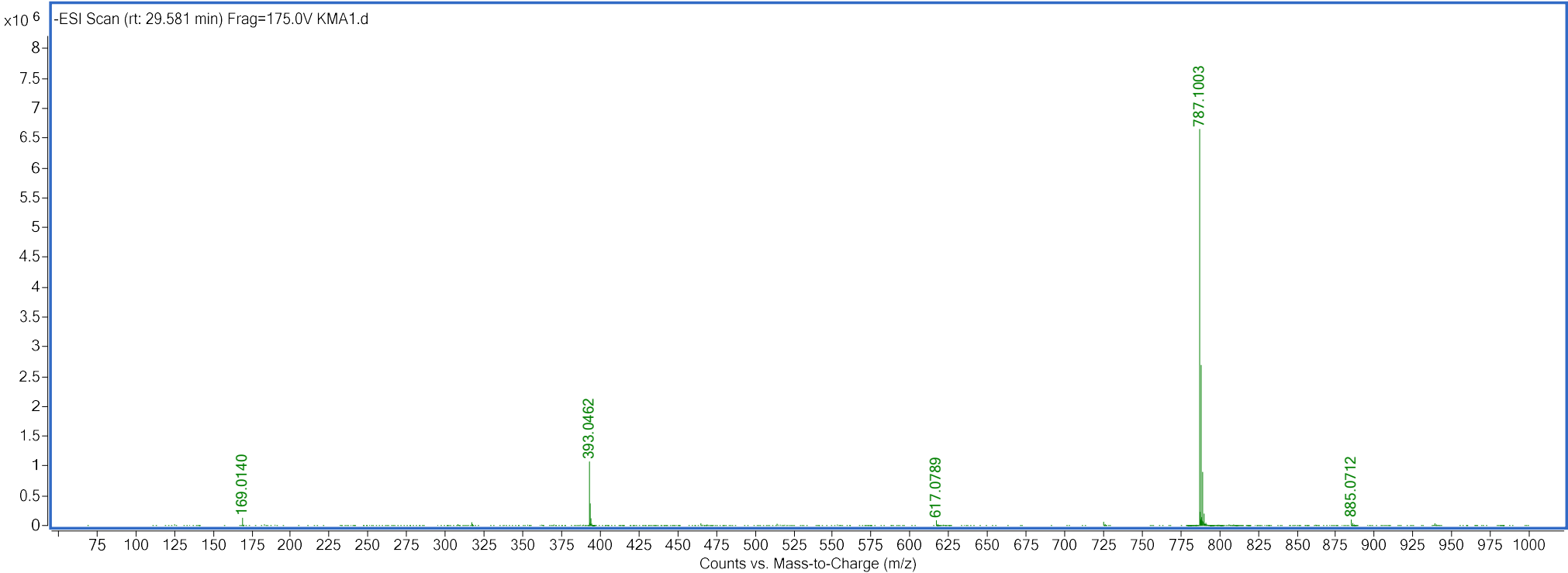
Signal 12: 29.068 min. Tetragalloyl glucose Isomer I (C₃₄H₂₈O₂₂)



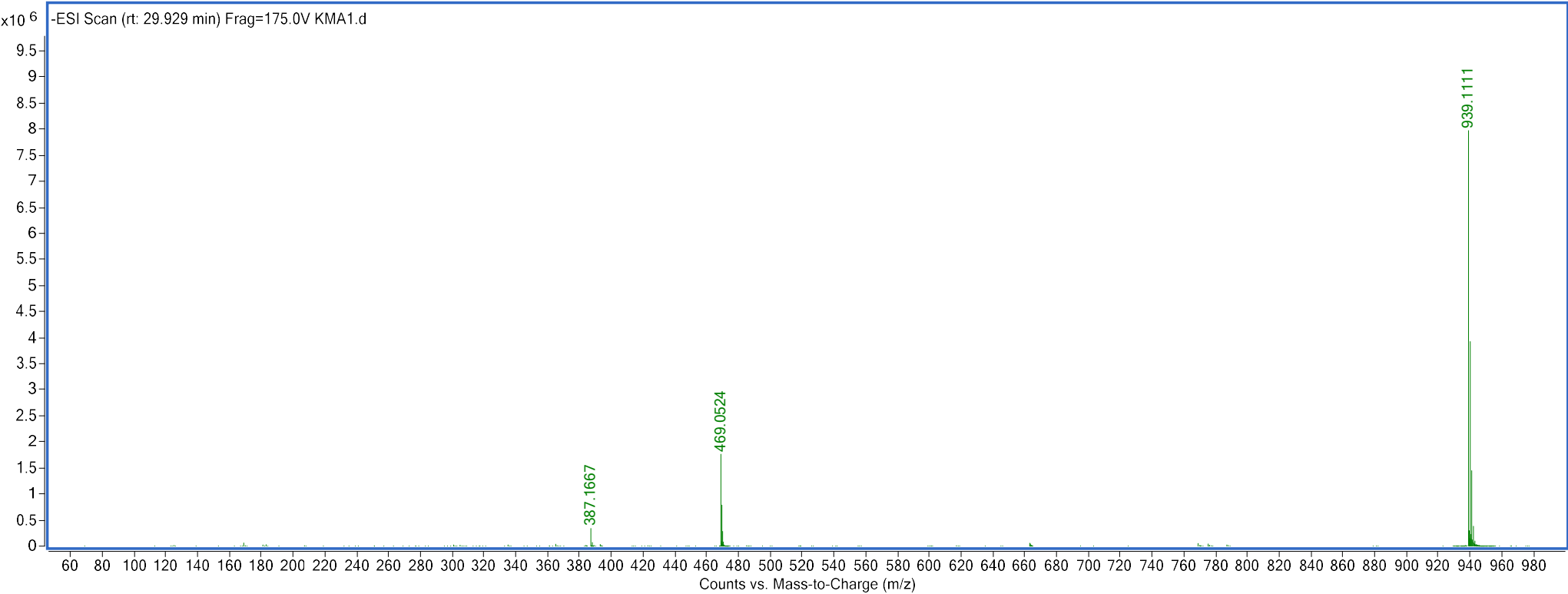
Signal 13: 29.383 min. Tetragalloyl glucose Isomer II (C₃₄H₂₈O₂₂)



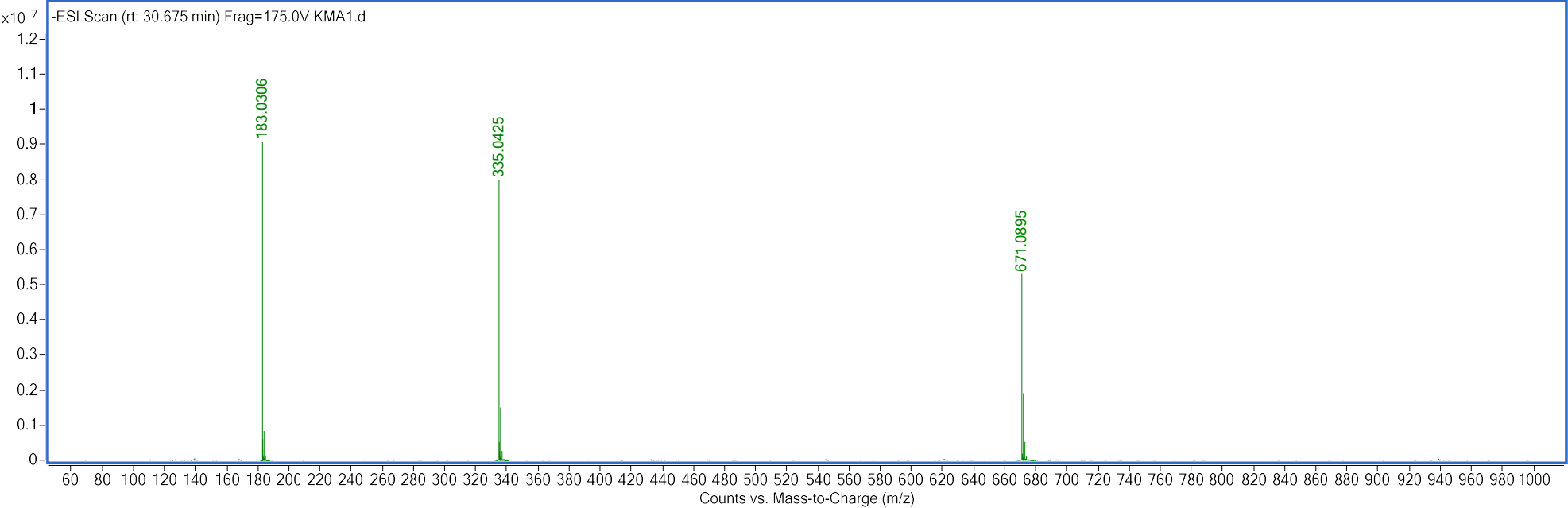
Signal 14: 29.581 min. Tetragalloyl glucose Isomer III (C₃₄H₂₈O₂₂)



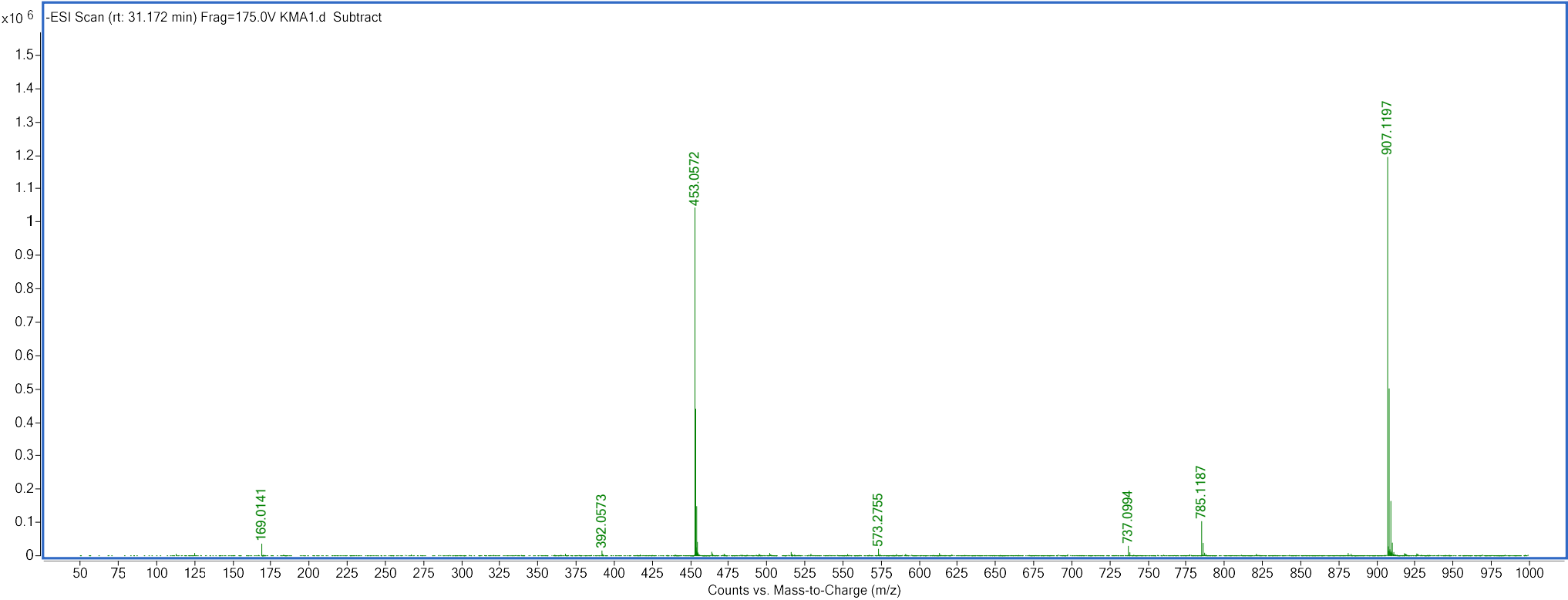
Signal 15: 29.929 min. Pentagalloyl glucose (C₄₁H₃₂O₂₆)



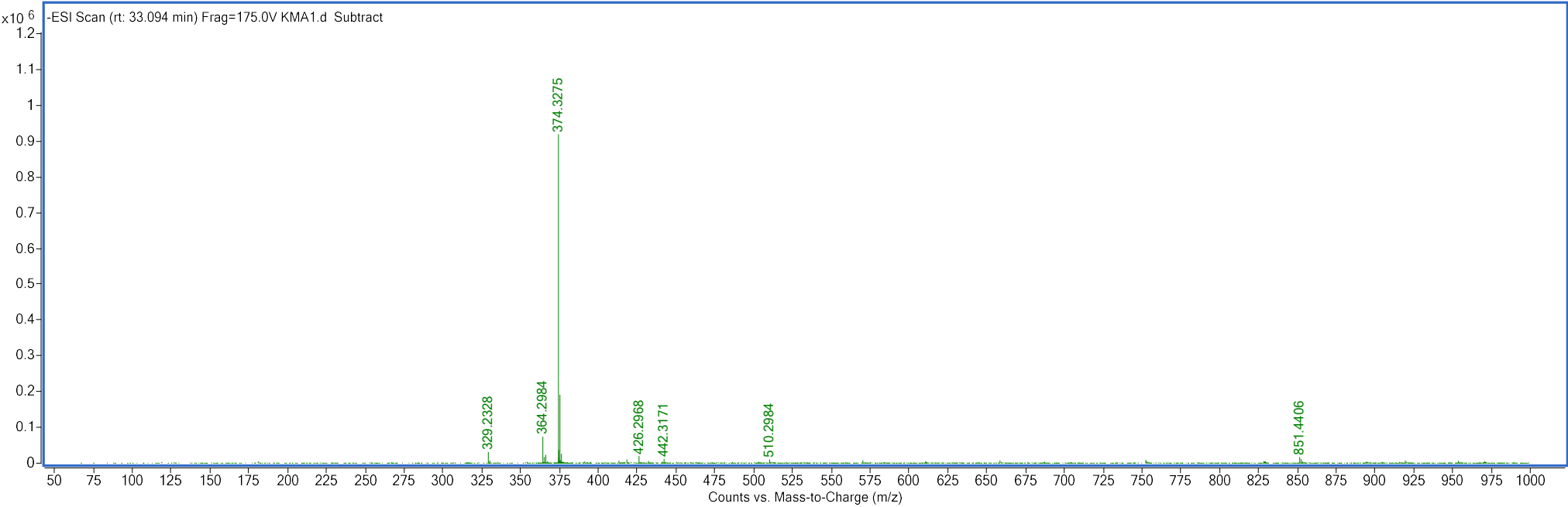
Signal 16: 30.675 min. Methyl-digallate ester (C₁₅H₁₂O₉)



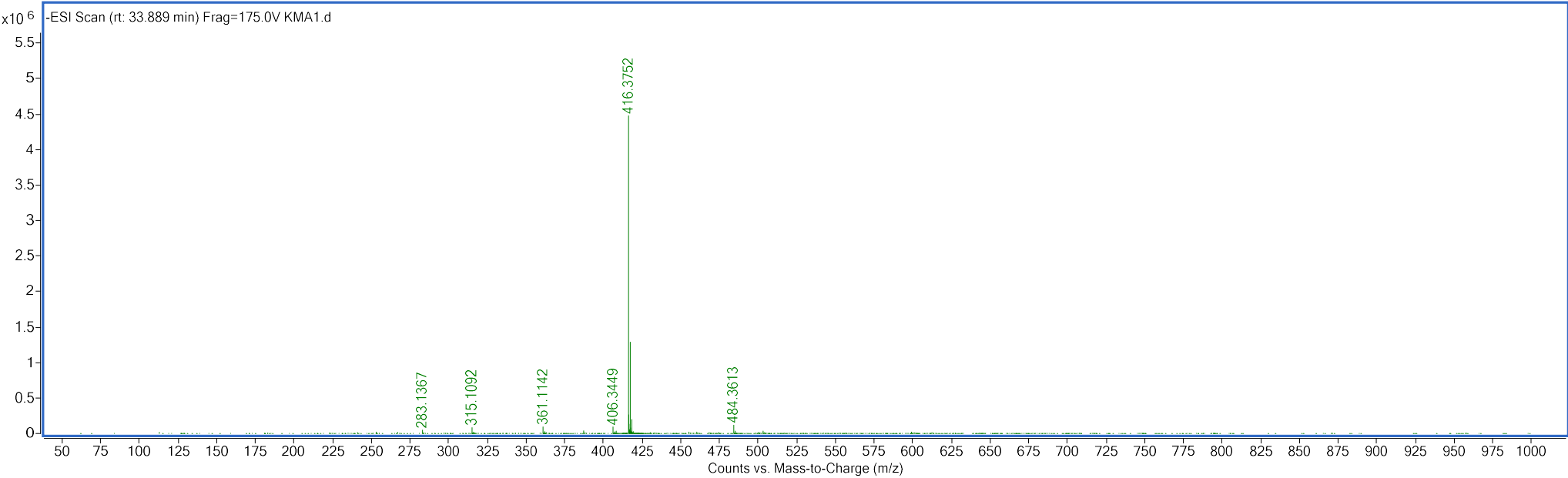
Signal 17: 31.172 min. NI (C₄₁H₃₂O₂₄)



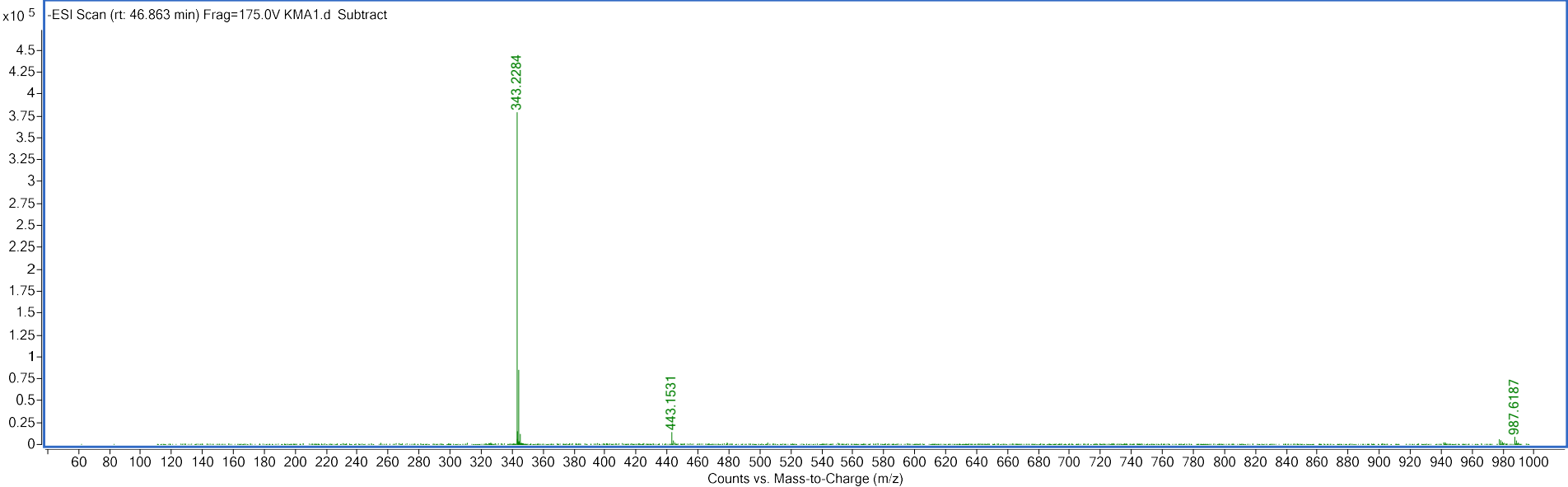
Signal 18: 33.094 min. NI



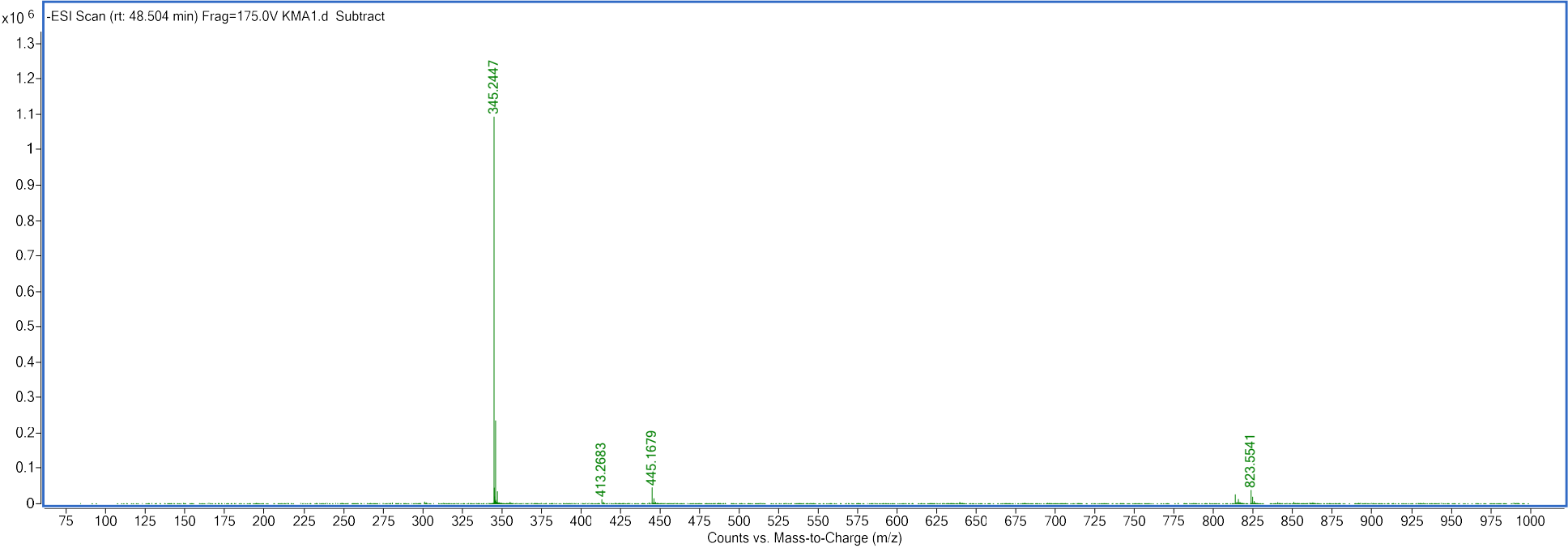
Signal 19: 33.889 min. NI



Signal 20: 46.863 min. Anacardic acid (C₂₂H₃₂O₃)



Signal 21: 48.504 min. Ginkgoic acid (C₂₂H₃₄O₃)



Signal 22: 49.001 min. NI(C₂₄H₃₆O₃)

