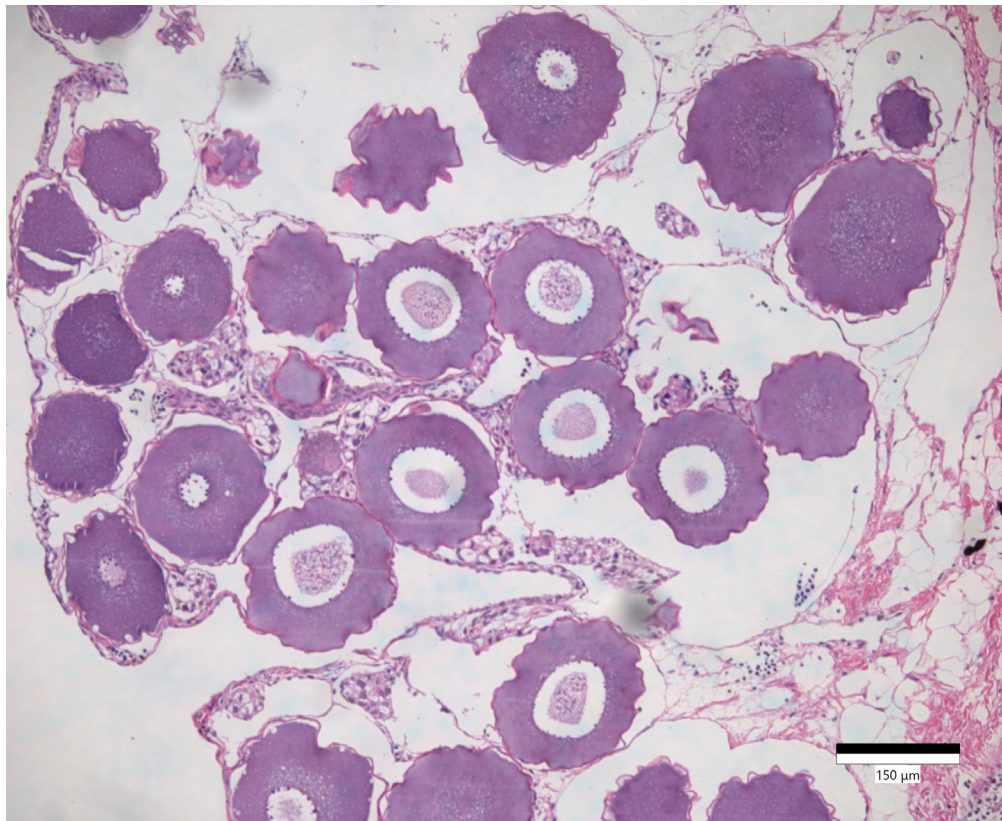
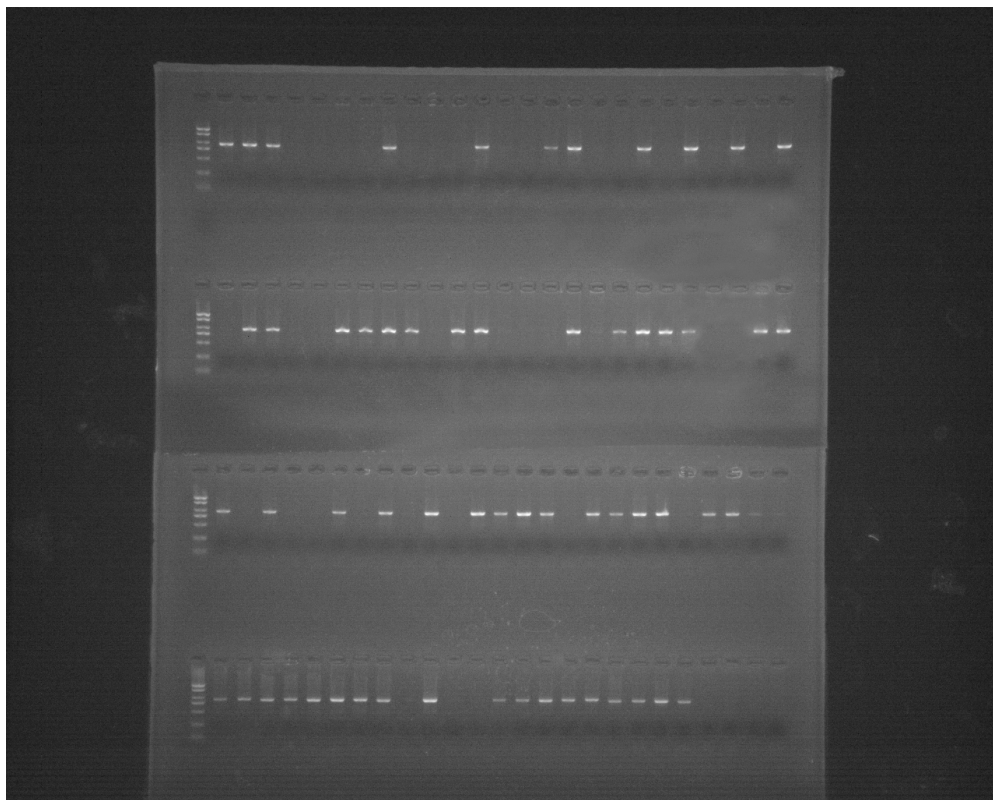


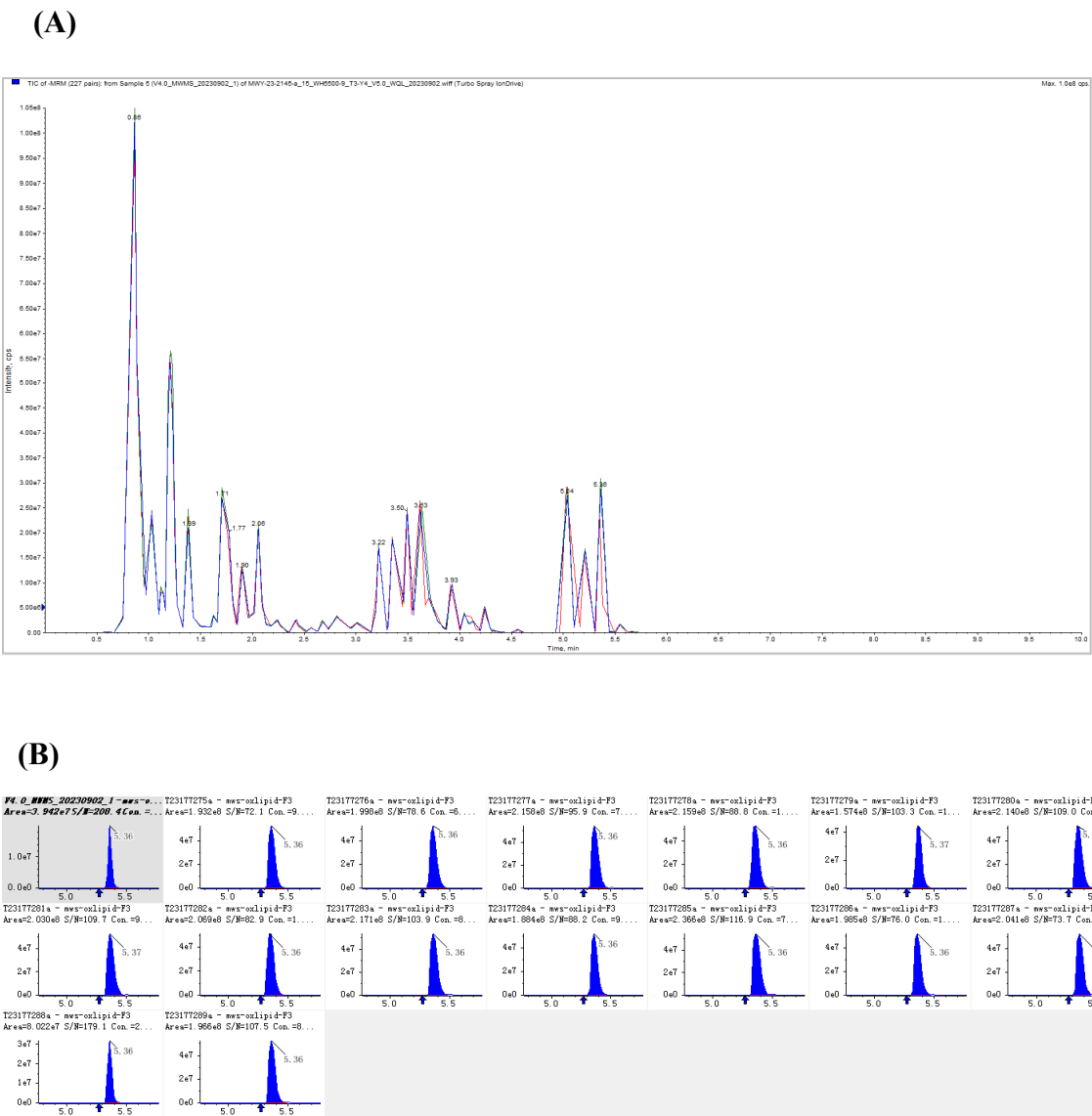
**Figure S1** The Yangtze sturgeon histological section of the stage II ovary.



**Figure S2** The amplified band of Yangtze sturgeon.



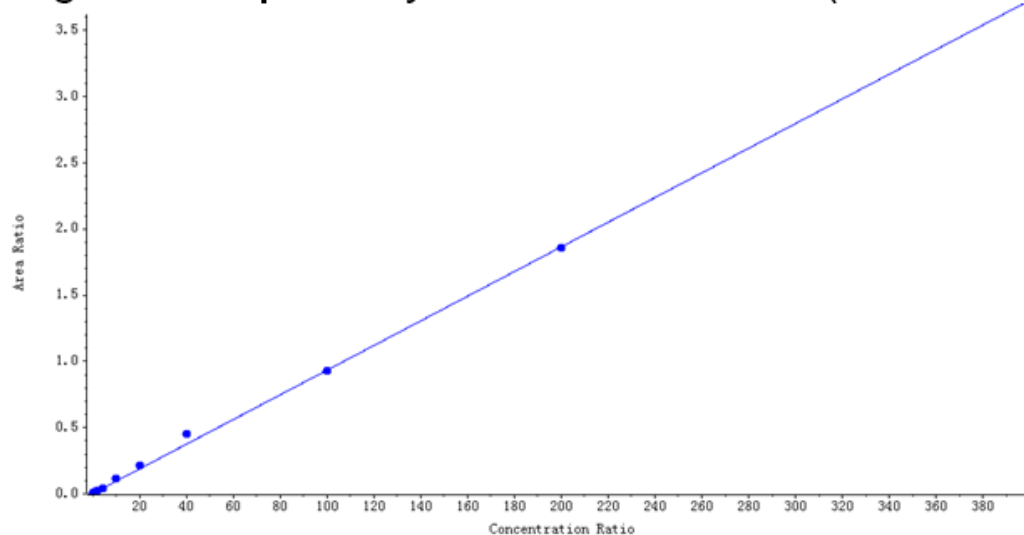
**Figure S3** The quality control of LC-MS/MS used in this study. **(A)** Total ions current (TIC) overlap plot of quality control samples; **(B)** Integral correction diagram; **(C)** Canonical plotting.



(C)

Compound name: mws-oxlipid-A1

Regression Equation:  $y = 0.00931x + 0.00356$  ( $r = 0.99814$ )



Compound name: mws-oxlipid-B1

Regression Equation:  $y = 0.17194x + 0.00333$  ( $r = 0.99786$ )

