

Figure S1. Band intensities of ECM proteins from in-vitro analysis of NRK-52E cells: Band intensities of ECM proteins from in-vitro analysis of NRK-52E cells were quantified by densitometric analysis and have been presented as relative ratio of three repetitive analyses. β -actin was used as the loading control. Statistical analysis was performed using one-way ANOVA followed by Tukey's HSD post-hoc test for multiple comparisons (** $p < 0.001$, * $p < 0.05$). NG, normal glucose; HG, high-glucose.

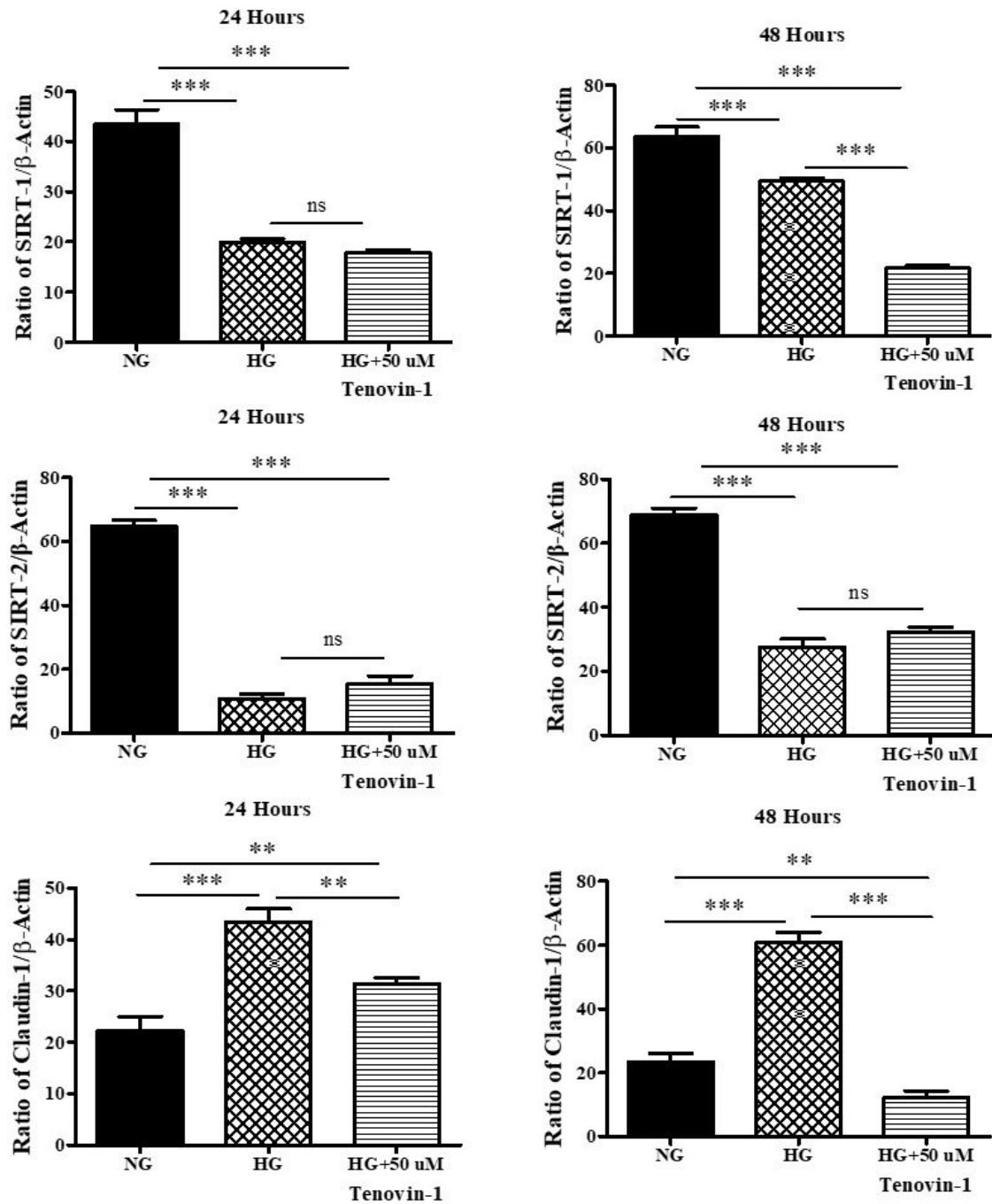


Figure S2. Band intensities of SIRTs and claudin-1 from in-vitro analysis: Band intensities of SIRTs and claudin-1 from in-vitro analysis of NRK-52E cell lysates were quantified by densitometric analysis and have been presented as relative ratio of three repetitive analyses. β -actin was used as the loading control. Statistical analysis was performed using one-way ANOVA followed by Tukey's HSD post-hoc test for multiple comparisons (** $p < 0.01$, *** $p < 0.001$). NG, normal glucose; HG, high-glucose.