

Supporting Information for

Magnolia officinalis bark extract prevents enterocyte death
in a colitis mouse model by inhibiting ROS-mediated necroptosis

Kang-In Lee ¹, Hye Jin Kim ², Hyungjun Kim ¹, Min-Soo Kim ², Jung Im Kim ², and Ki-Sun Park ^{1,*}

¹ KM Science Research Division, Korea Institute of Oriental Medicine, Daejeon 34054, Republic of Korea.

² KM Convergence Research Division, Korea Institute of Oriental Medicine, Daejeon 34054, Republic of Korea.

* Corresponding author

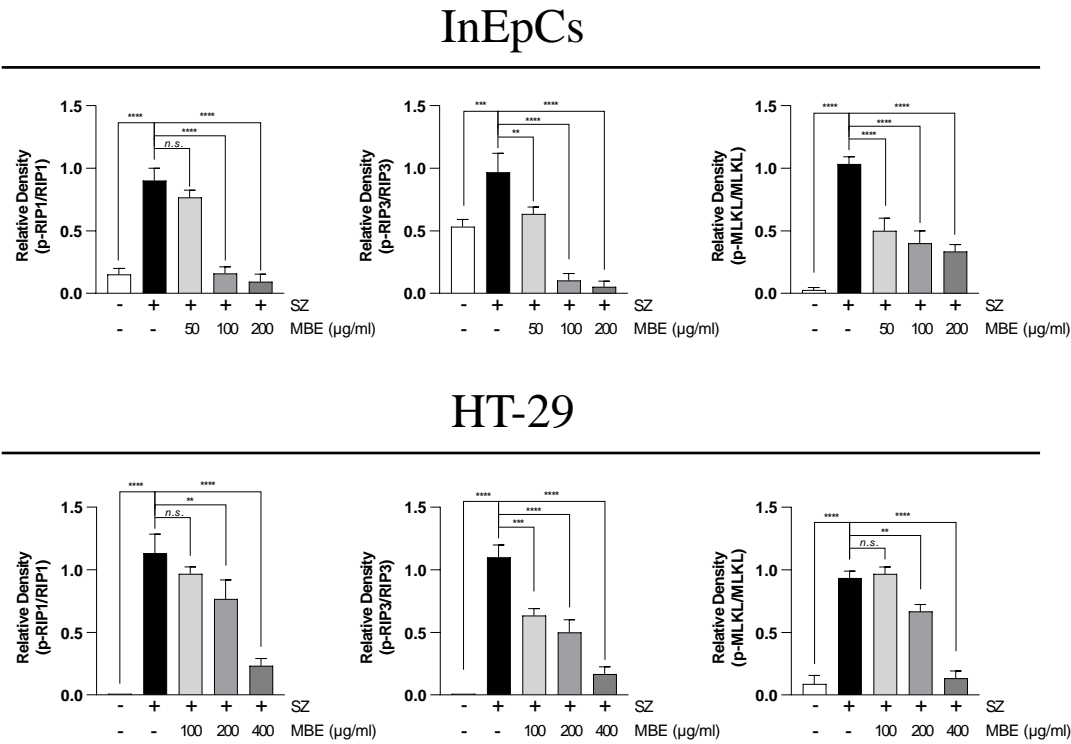
E-mail address: kisunpark@kiom.re.kr

Tel.: +82-42-868-9662

Table S1. Antibodies for immunoblot & immunohistochemistry

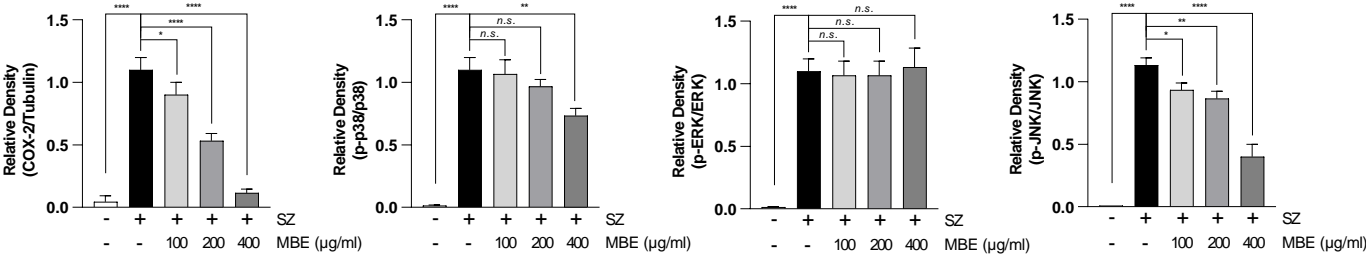
| Antibody | Source | Catalog No. |
|-----------------|----------------|--------------------|
| RIP1 | Cell signaling | #3493 |
| p-RIP1 | Cell signaling | #65746 |
| RIP3 | Cell signaling | #10188 |
| p-RIP3 | Cell signaling | #93654 |
| MLKL | Cell signaling | #14993 |
| p-MLKL | Cell signaling | #91689 |
| p38 | Cell signaling | #9212 |
| p-p38 | Cell signaling | #9211 |
| ERK | Cell signaling | #9102 |
| p-ERK | Cell signaling | #4370 |
| JNK | Cell signaling | #3708 |
| p-JNK | Cell signaling | #4668 |
| COX-2 | Abcam | Ab52237 |
| Tubulin | Abcam | Ab7291 |

Figure S1. Graph indicates quantification of Figure 3 immunoblot data.



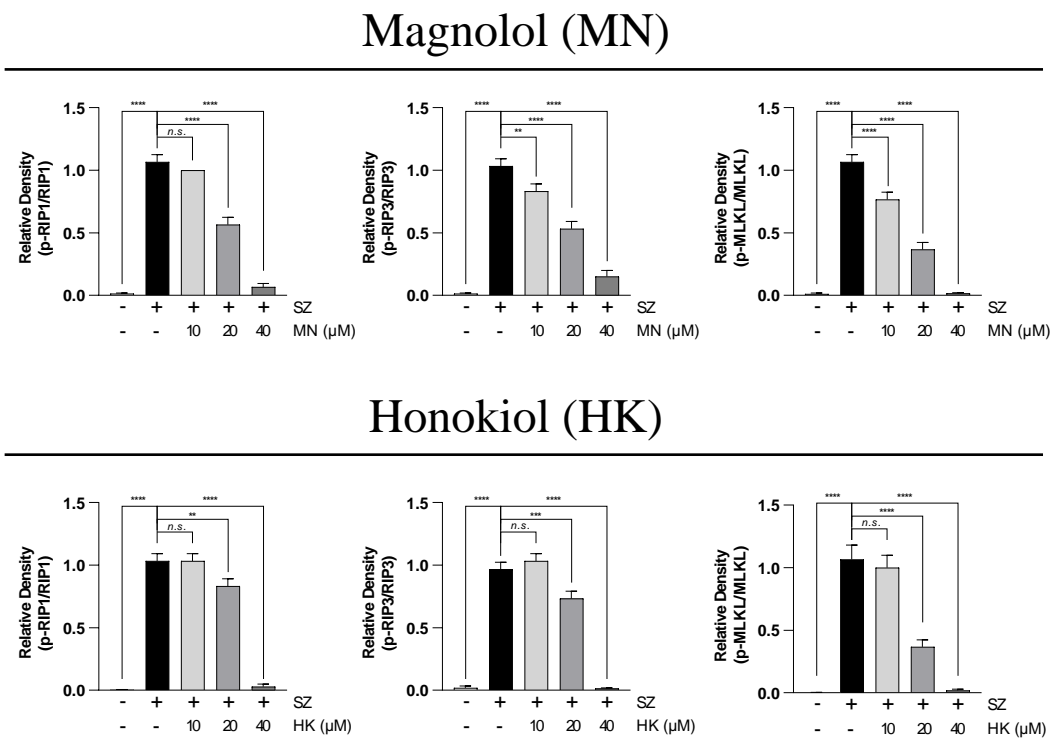
** $P < 0.01$, *** $P < 0.001$, and **** $P < 0.0001$ (data were analyzed using the ANOVA); ns, not significant. (data were analyzed using the ANOVA).

Figure S2. Graph indicates quantification of Figure 4 immunoblot data.



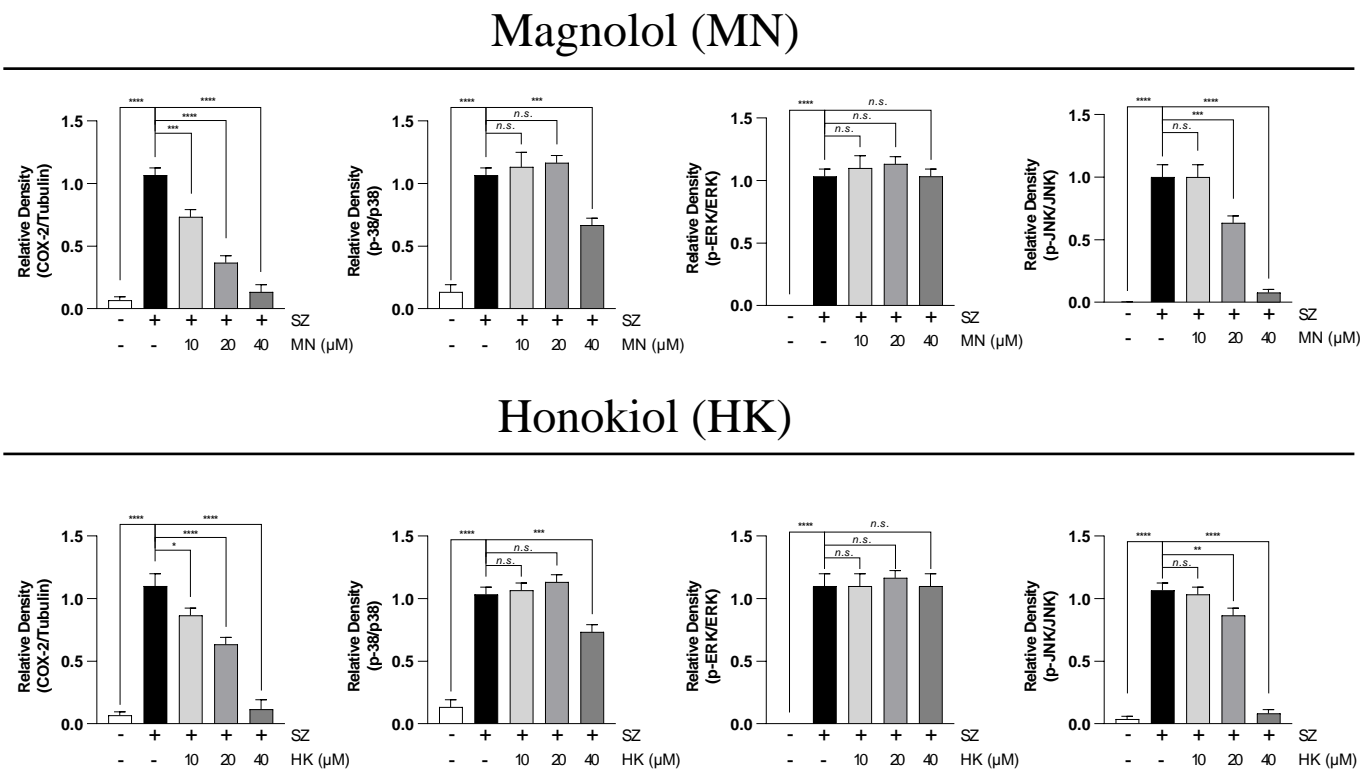
* $P < 0.05$, ** $P < 0.01$, *** $P < 0.001$, and **** $P < 0.0001$ (data were analyzed using the ANOVA); ns, not significant. (data were analyzed using the ANOVA).

Figure S3. Graph indicates quantification of Figure 6 immunoblot data.



* $P < 0.05$, ** $P < 0.01$, *** $P < 0.001$, and **** $P < 0.0001$ (data were analyzed using the ANOVA); ns, not significant. (data were analyzed using the ANOVA).

Figure S4. Graph indicates quantification of Figure 7 immunoblot data.



* $P < 0.05$, ** $P < 0.01$, *** $P < 0.001$, and **** $P < 0.0001$ (data were analyzed using the ANOVA); ns, not significant. (data were analyzed using the ANOVA).

Fig 3 D

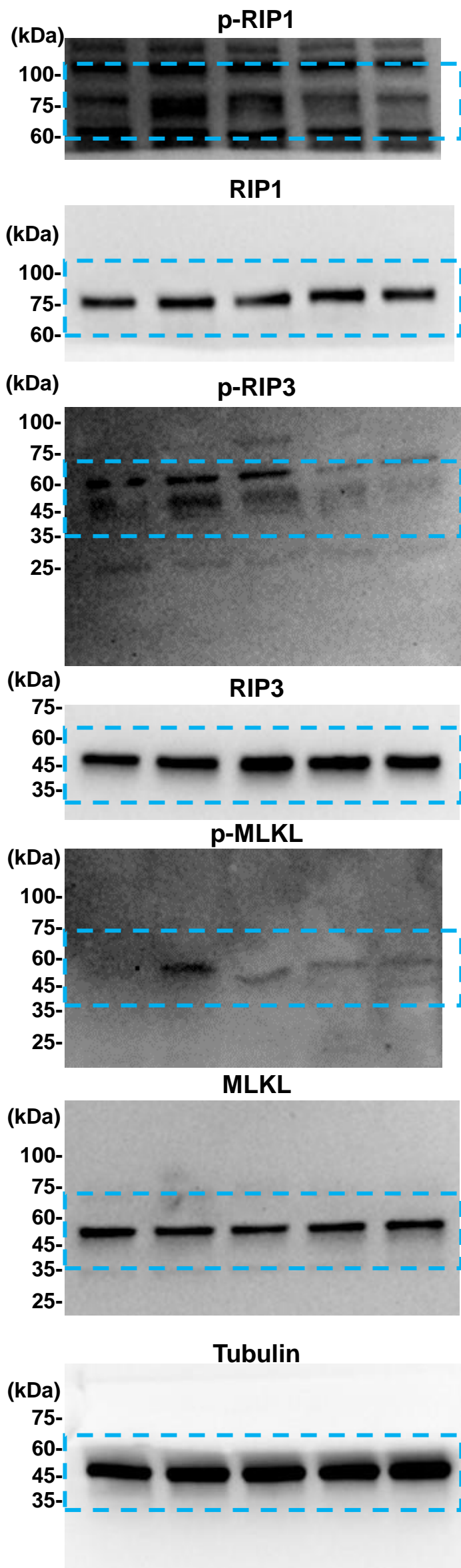


Fig 3 H

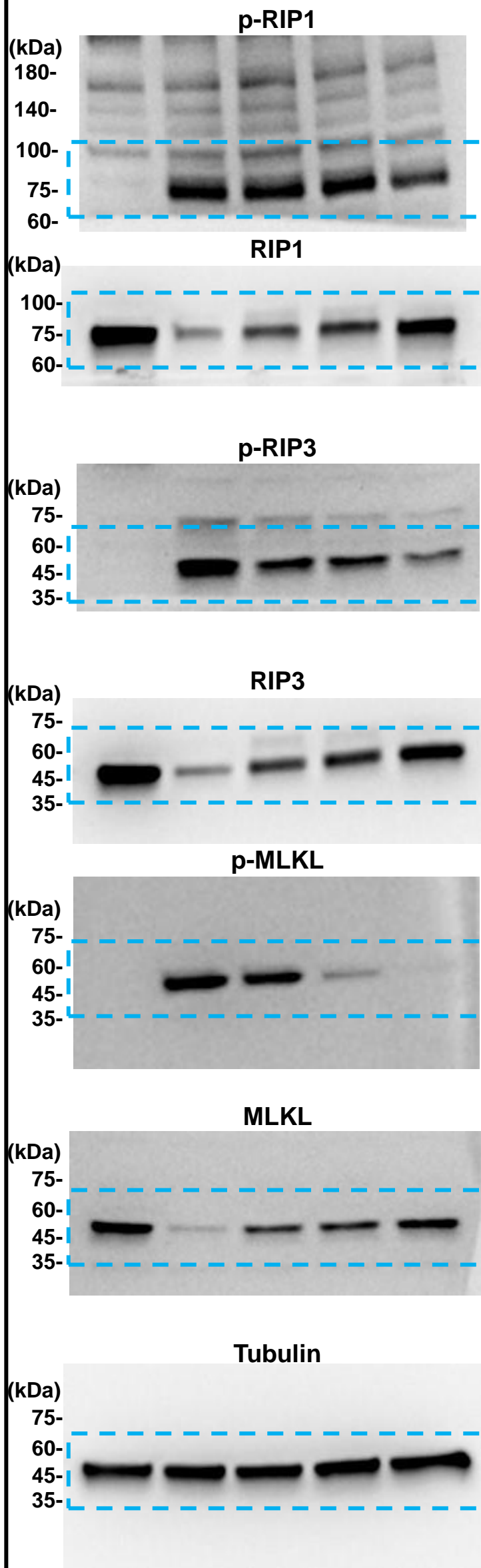


Fig 4 C

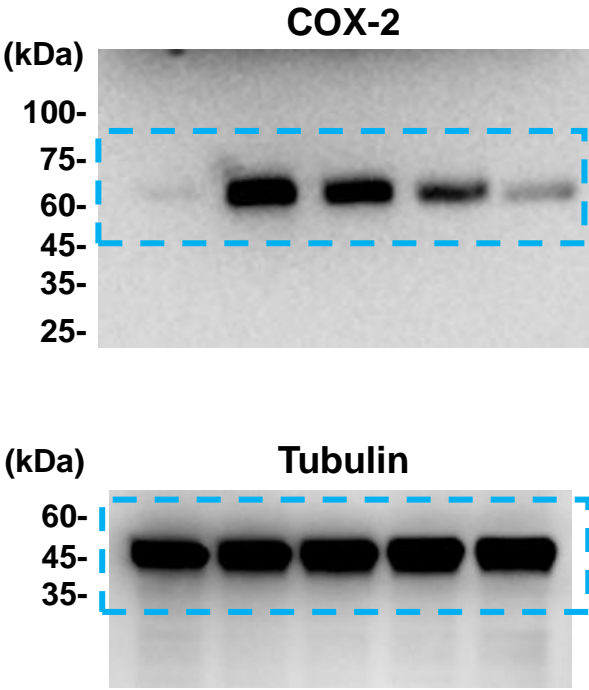


Fig 4 E

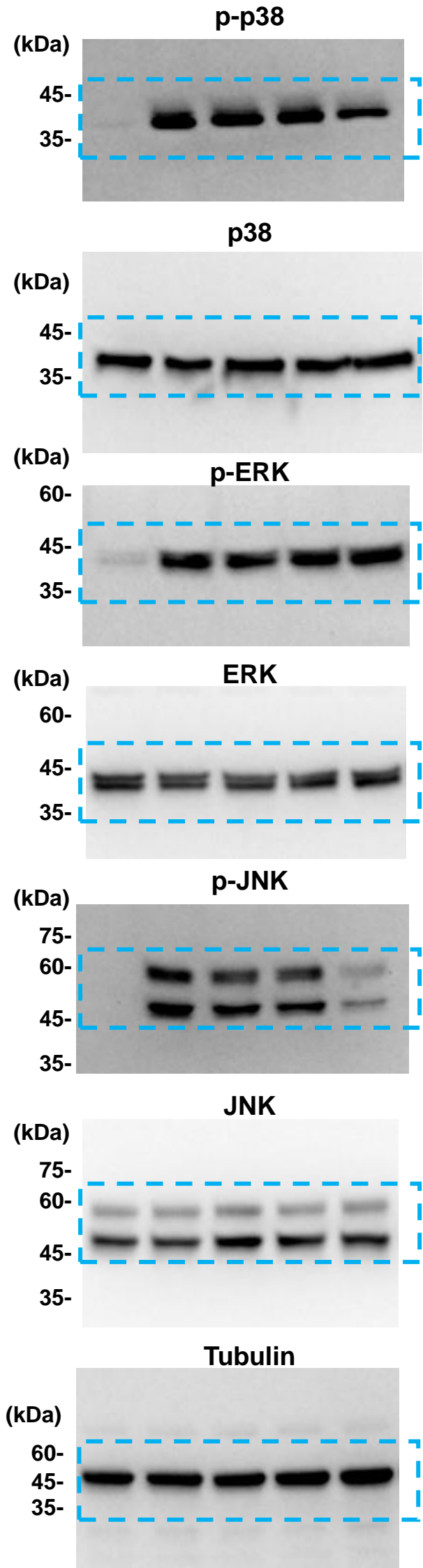


Fig 6 C

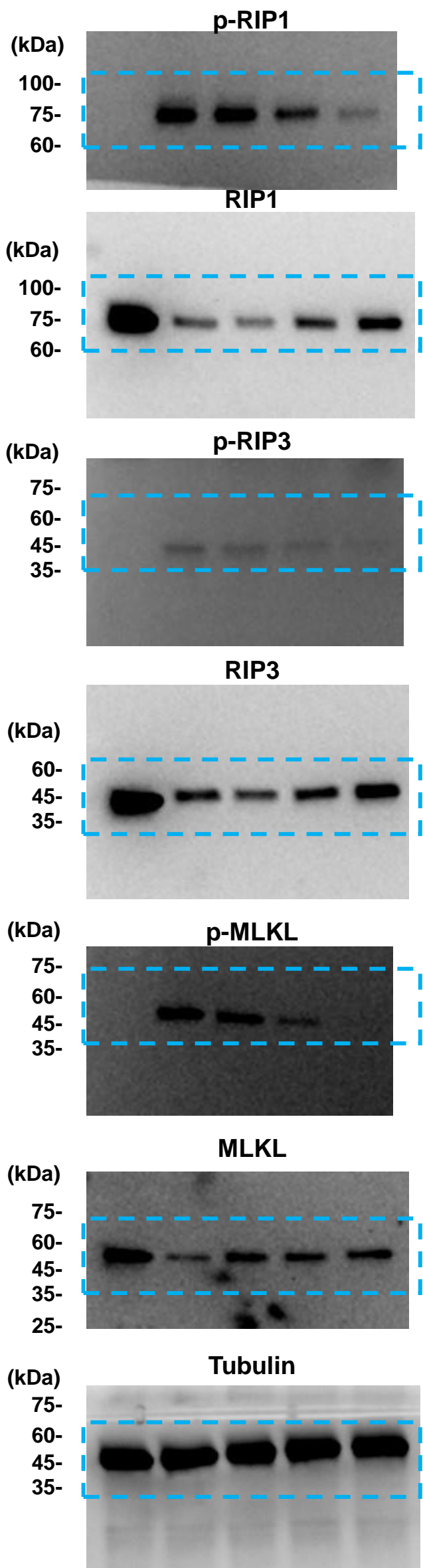


Fig 6 F

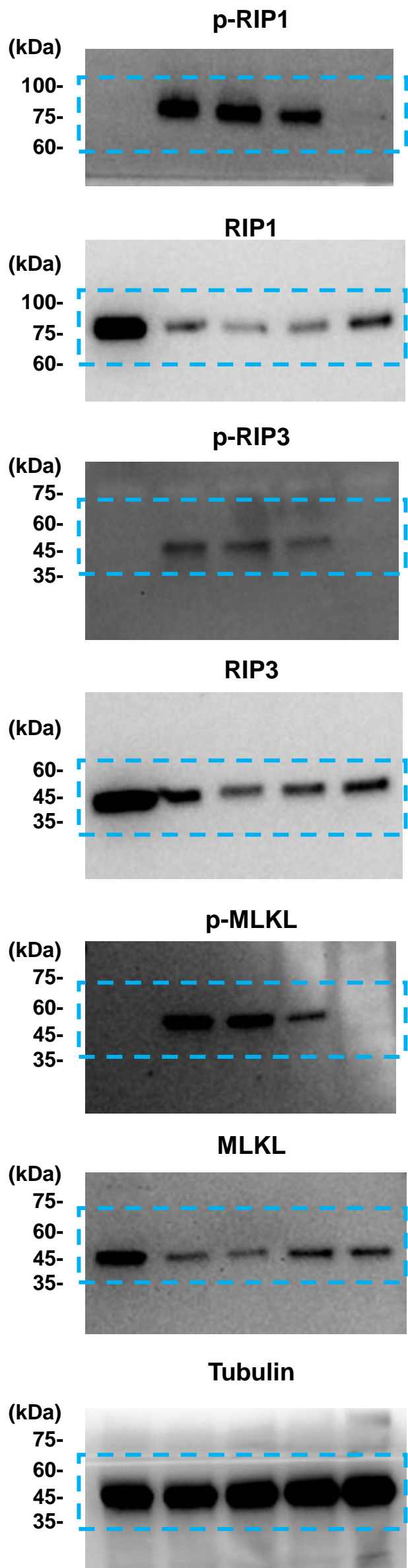


Fig 7 C

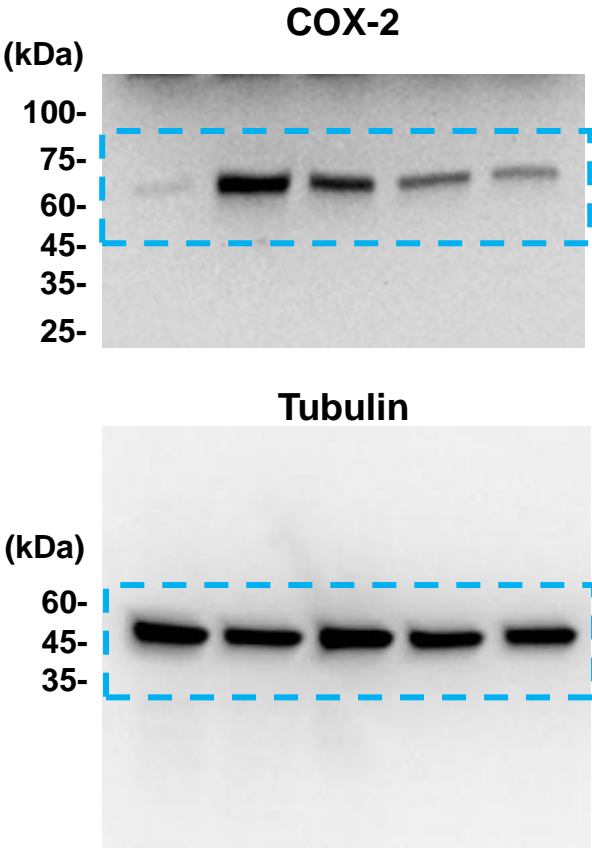


Fig 7 D

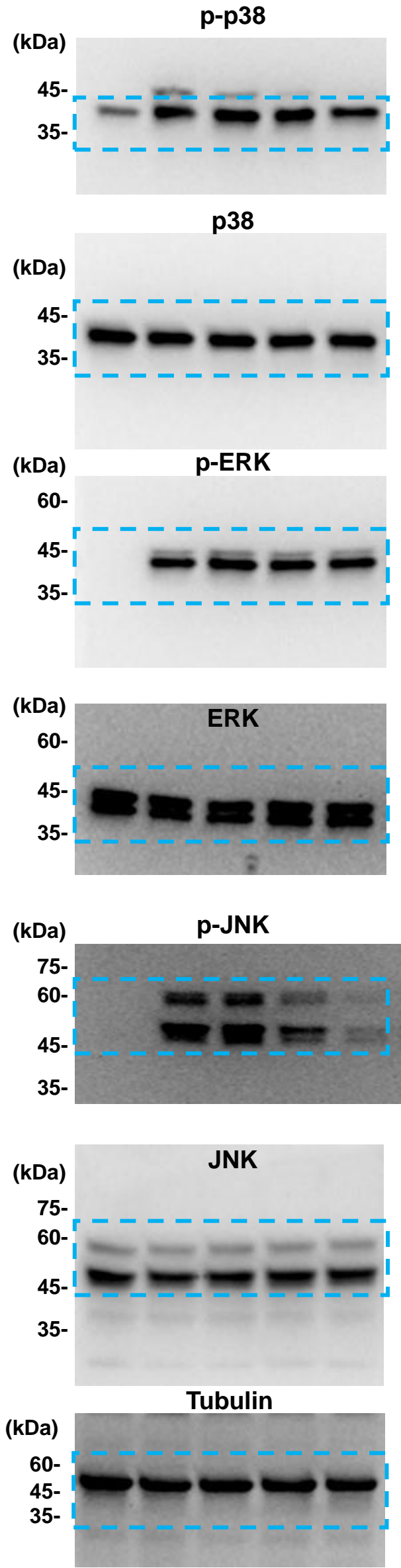


Fig 7 G

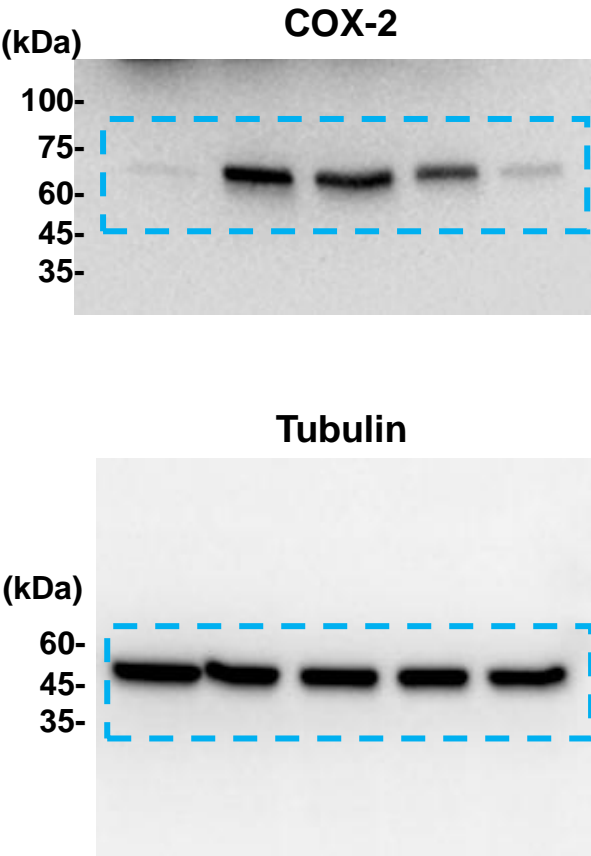


Fig 7 H

