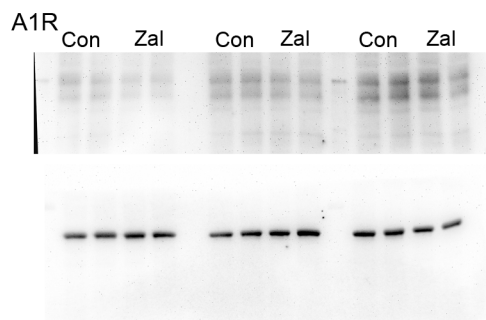
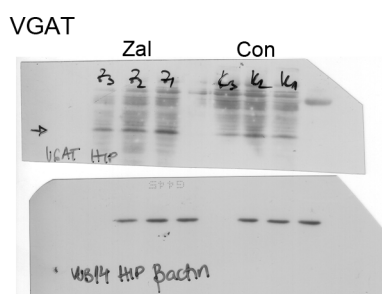
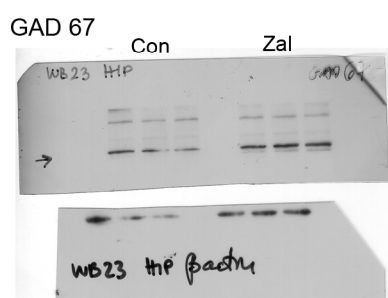
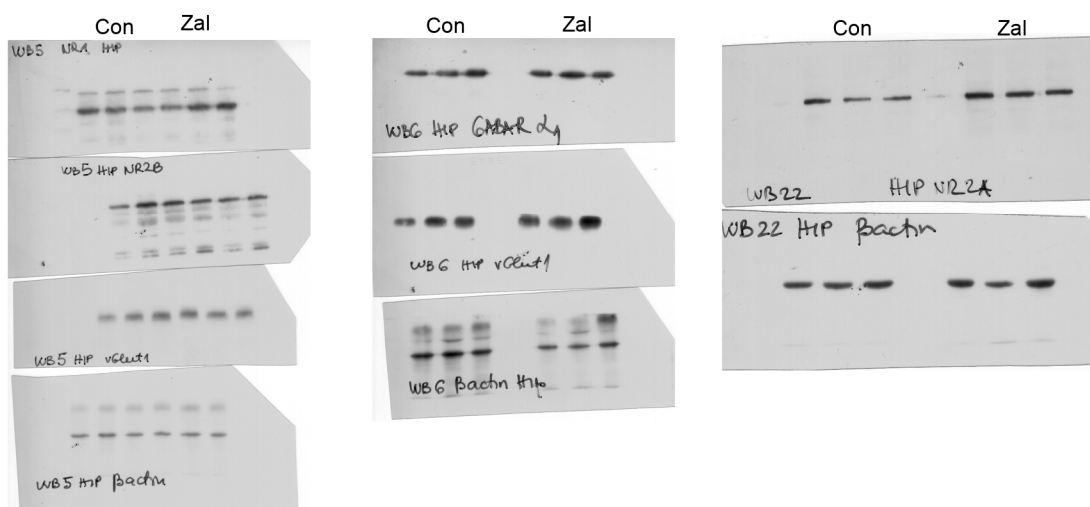


## Original (unprocessed) images of representative blots

Note: Due to the different molecular weight of the proteins the membranes were cut (where possible) or stripped and reprobed for another protein.



Special note: Unlike other blots, A1R chemiluminiscent signals were detected by ChemiDoc-It Imager (Ultra-Violet Products Ltd., Cambridge, United Kingdom)