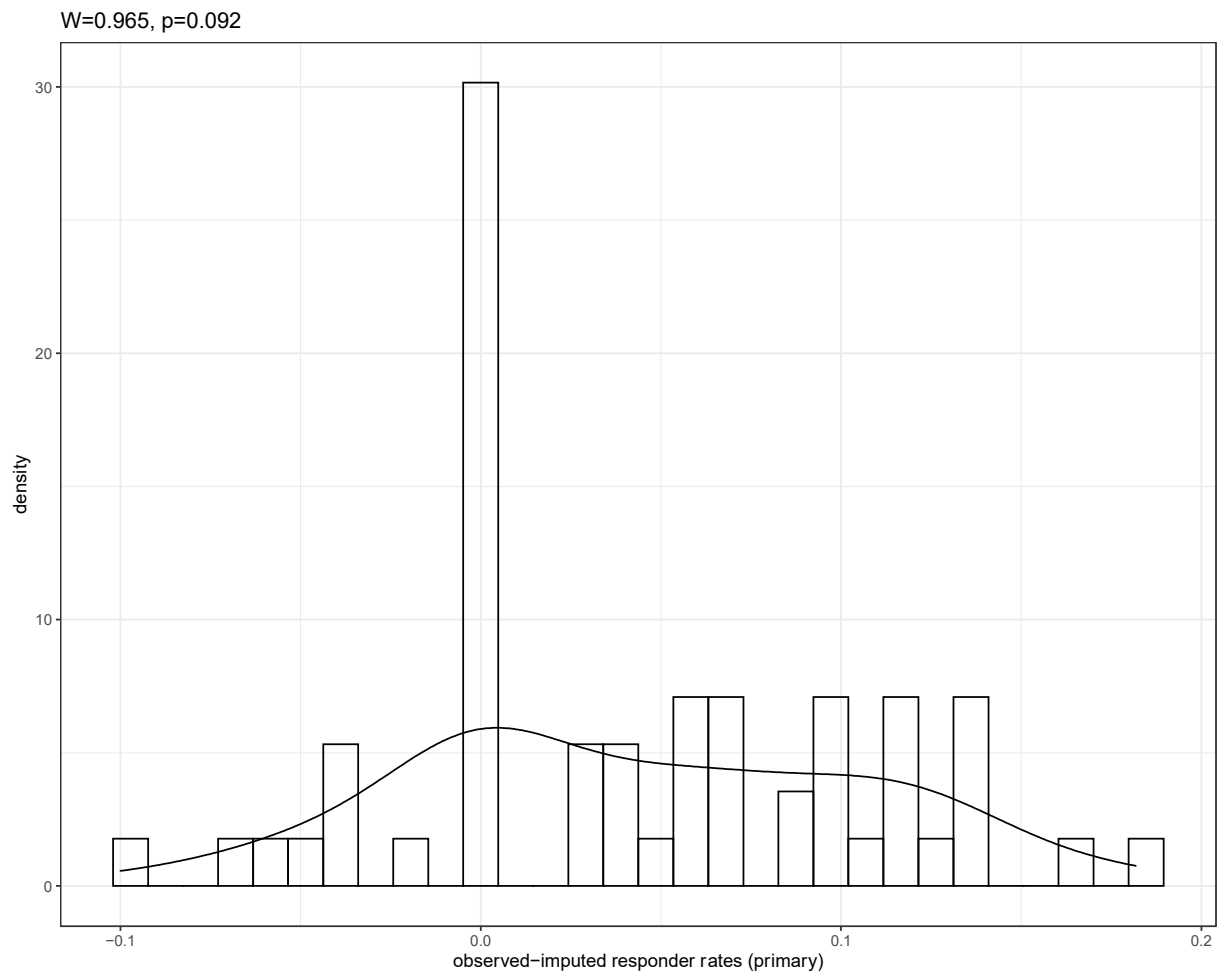


Supplementary content

Figure-S1 Histogram and QQ plot of original-imputed responder rates (primary threshold)



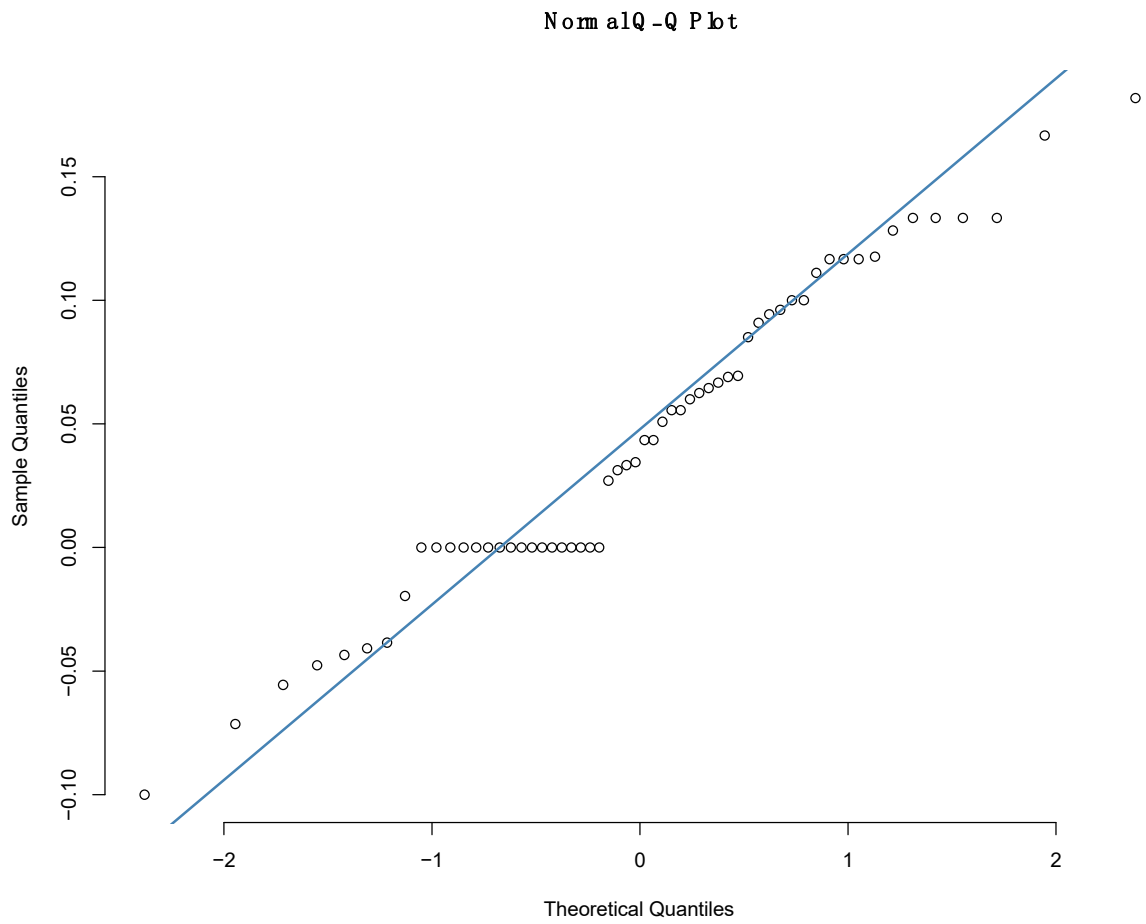
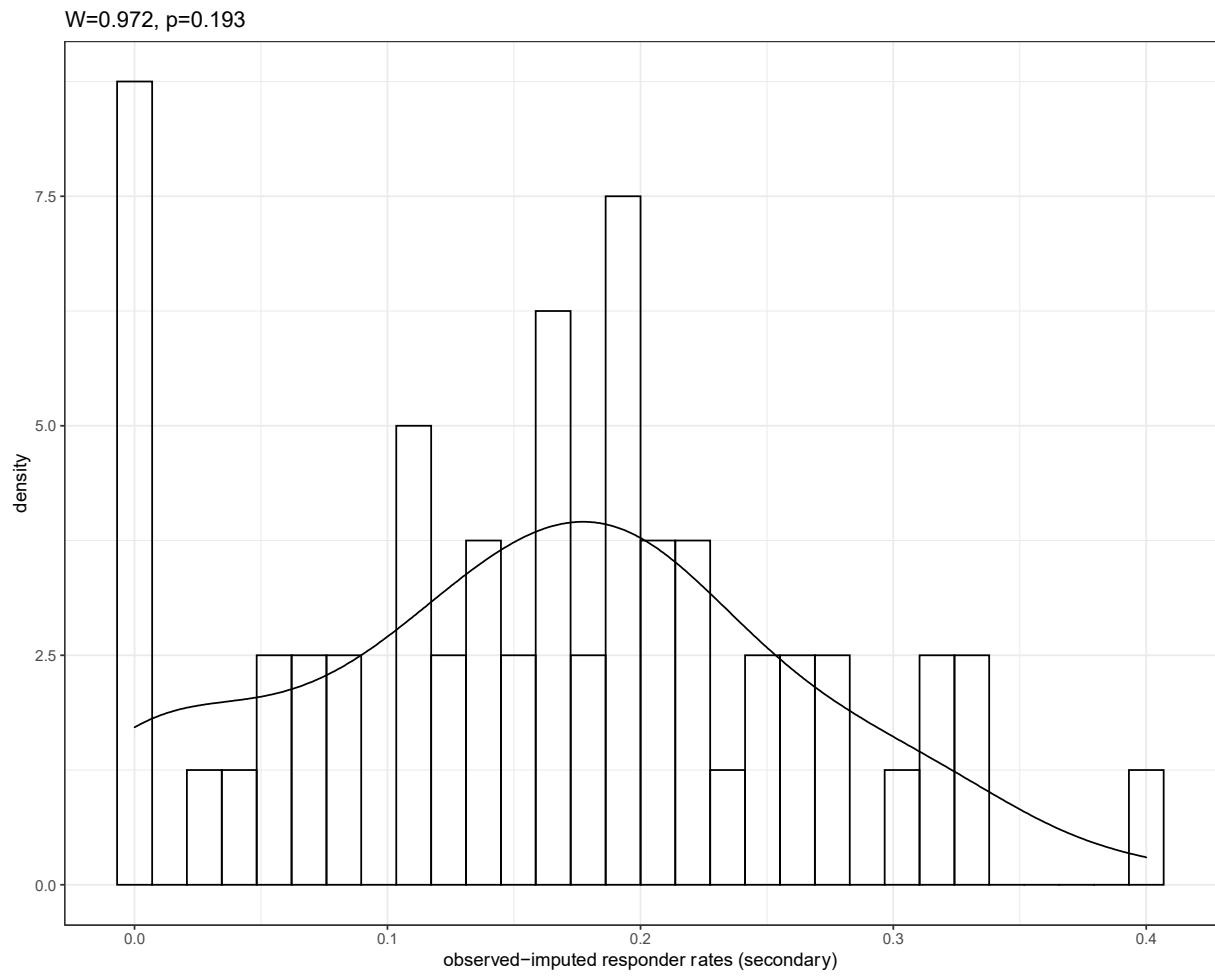


Figure-S2 Histogram and QQ plot of original-imputed responder rates (secondary threshold)



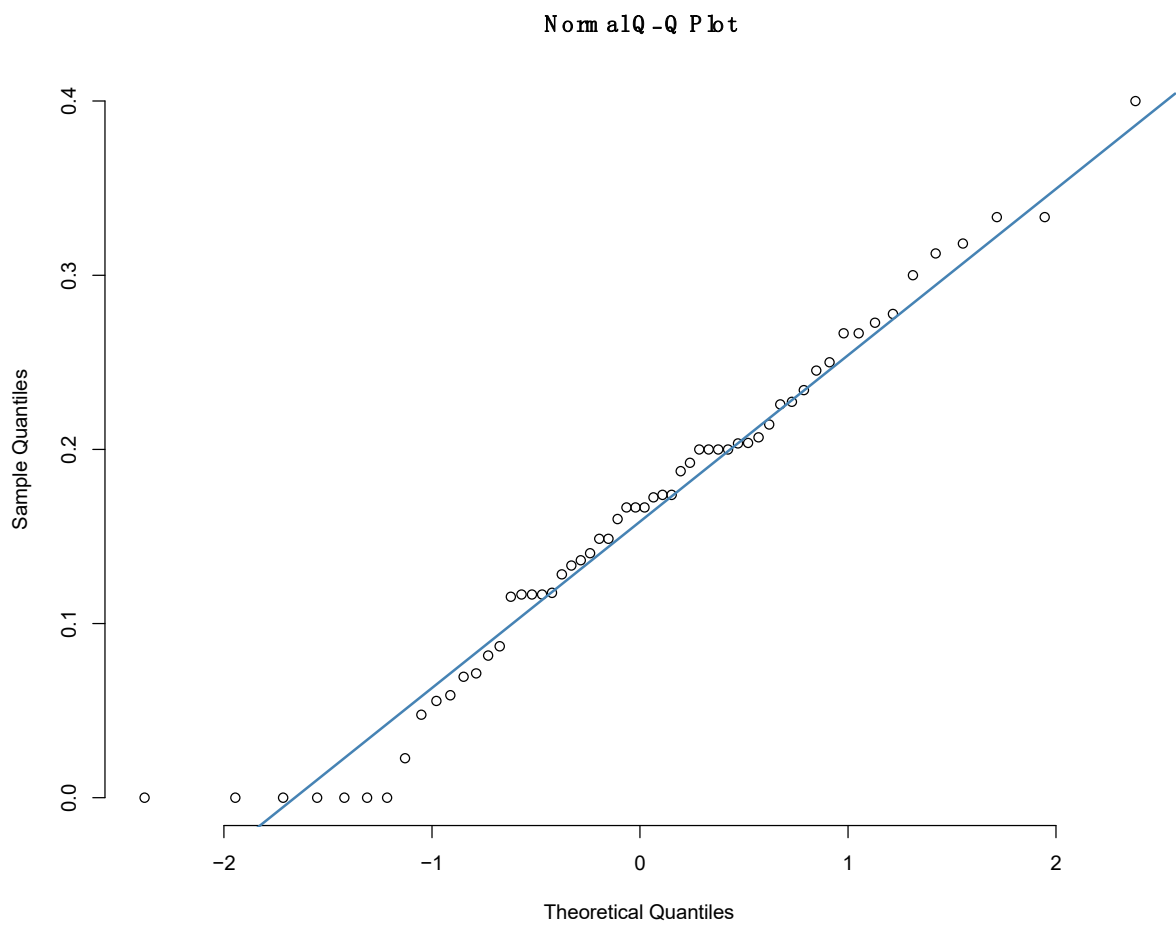
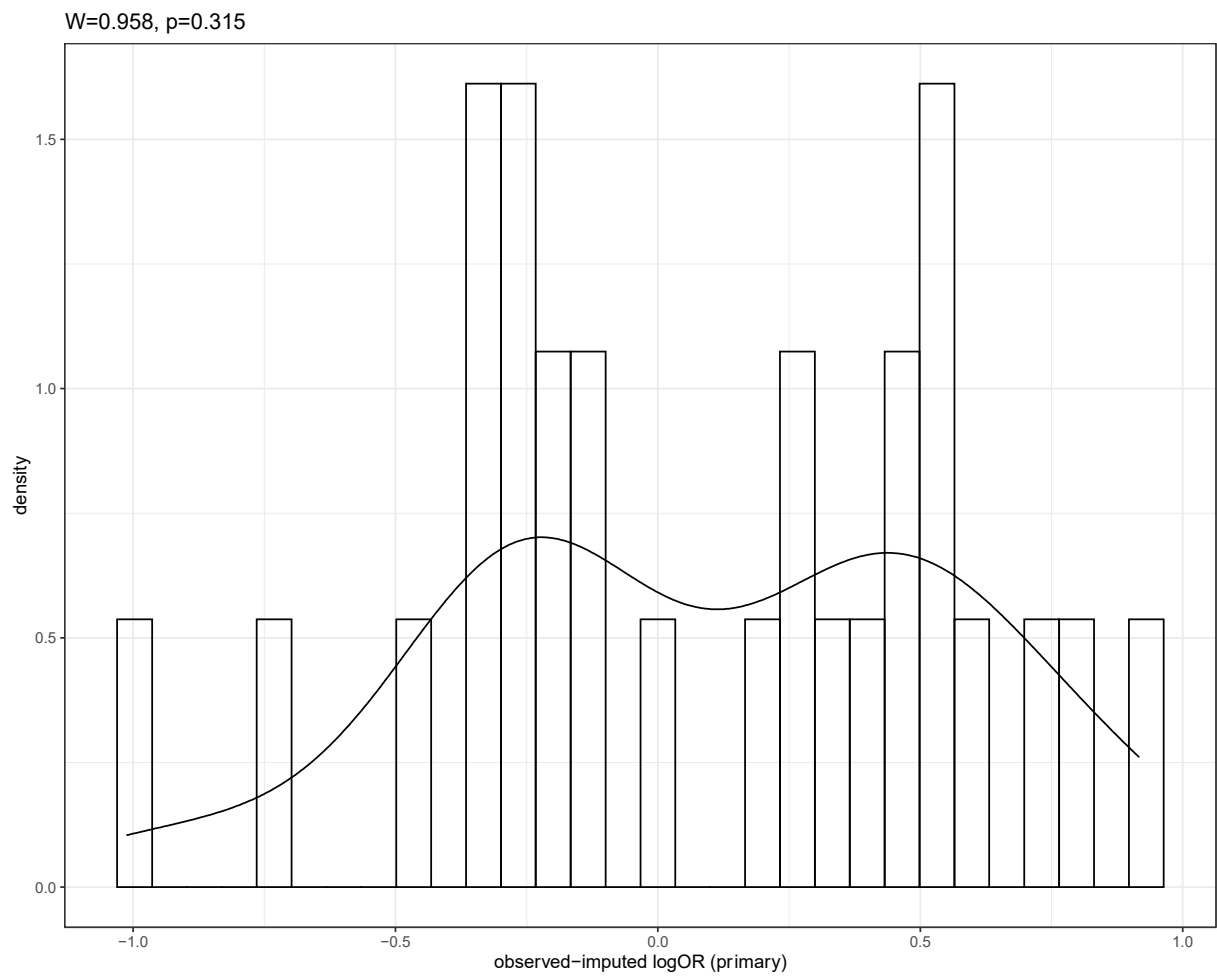


Figure-S3 Histogram and QQ plot of original-imputed lnOR (primary threshold)



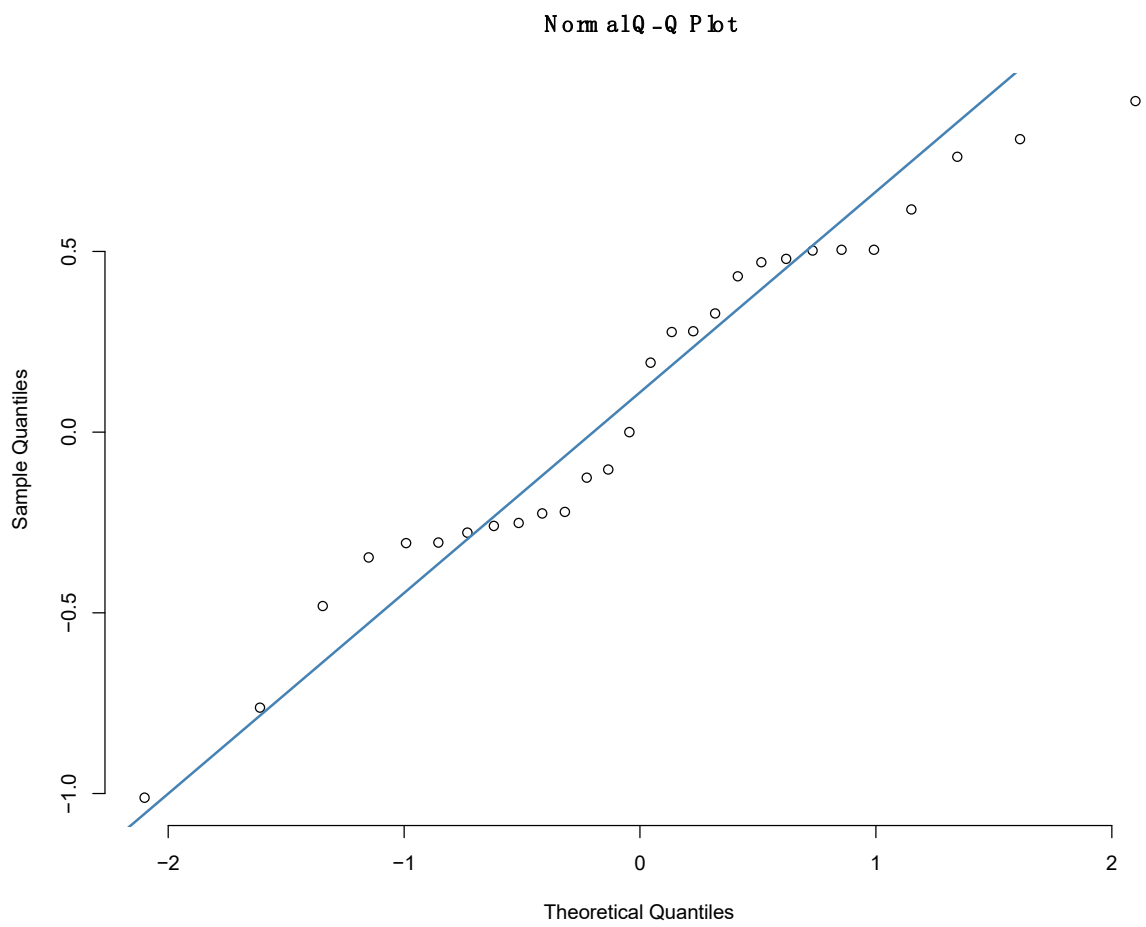
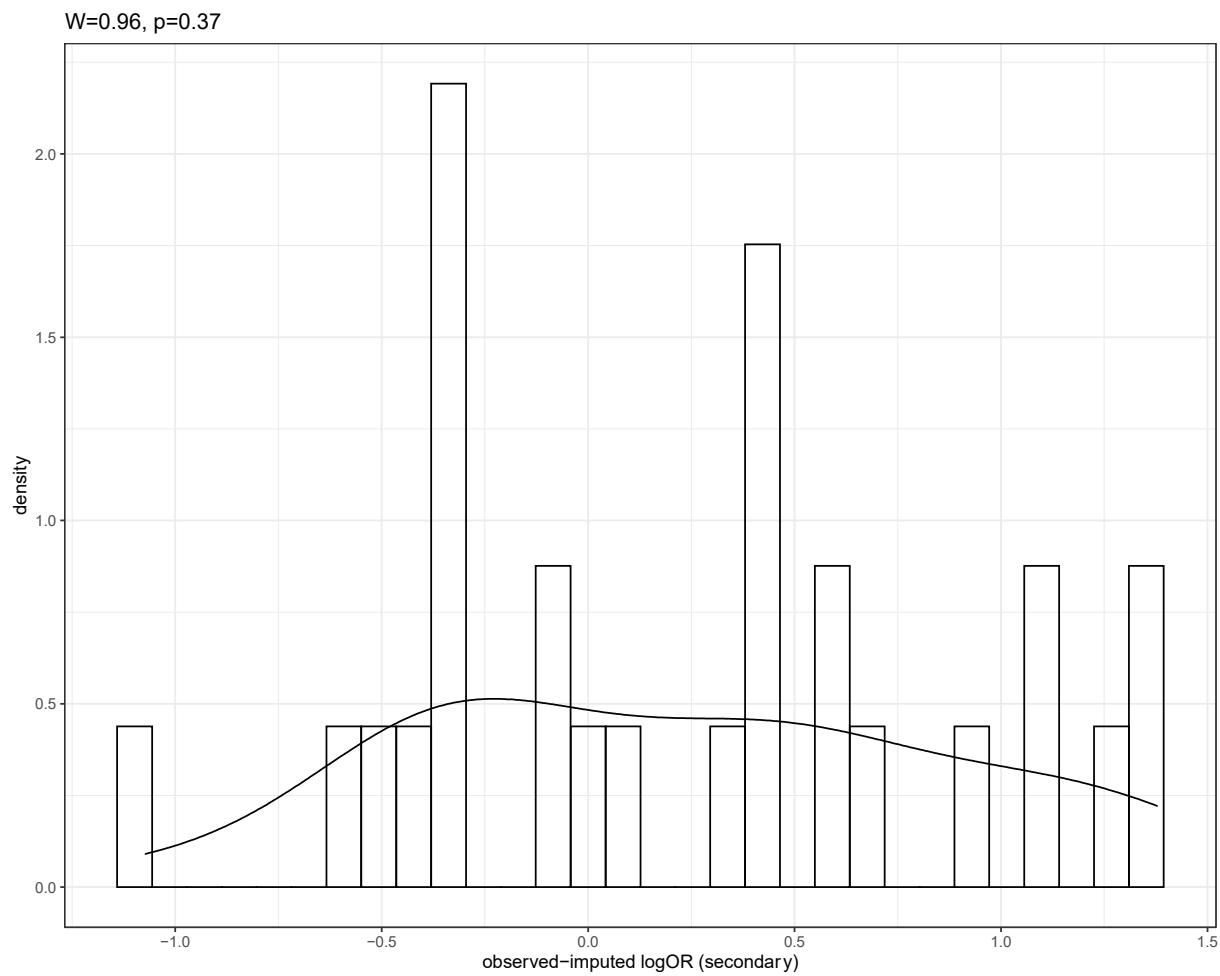


Figure-S4 Histogram and QQ plot of original-imputed lnOR (secondary threshold)



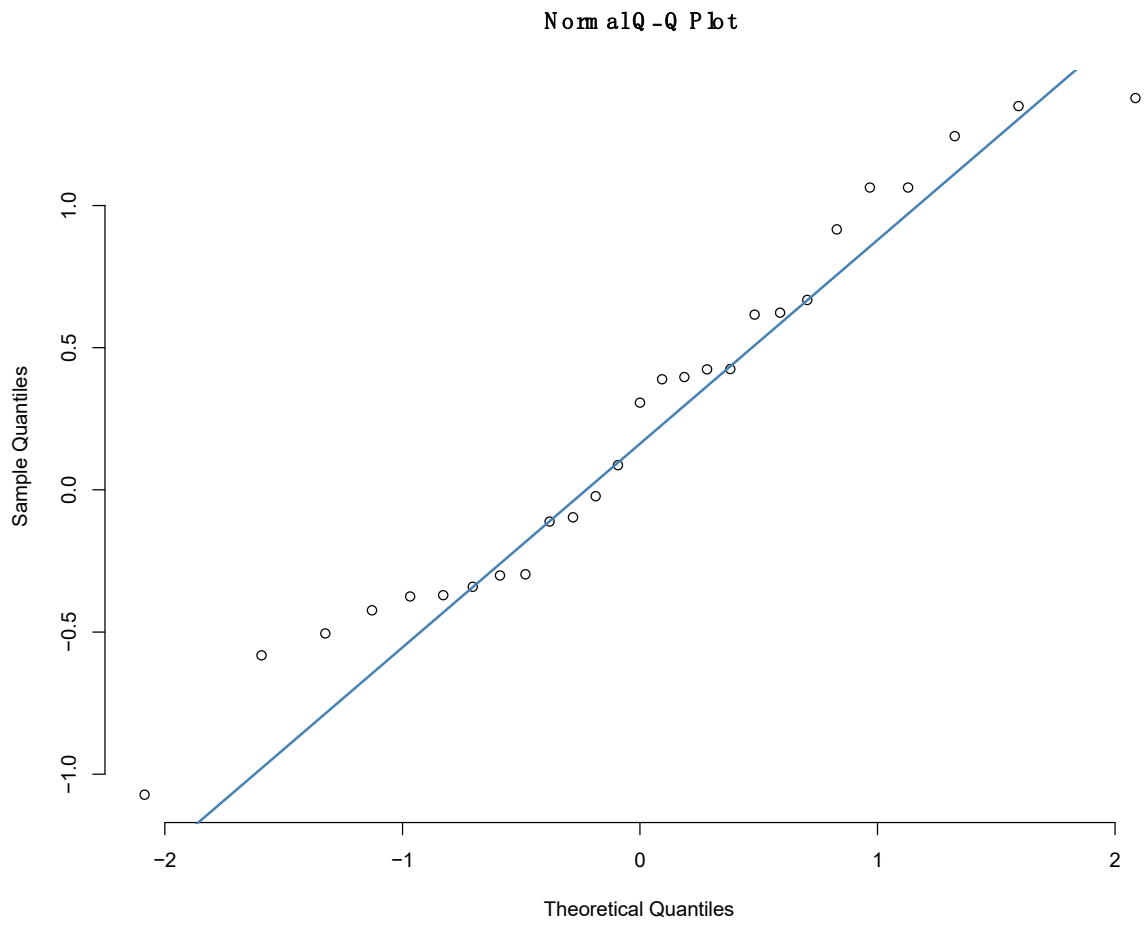
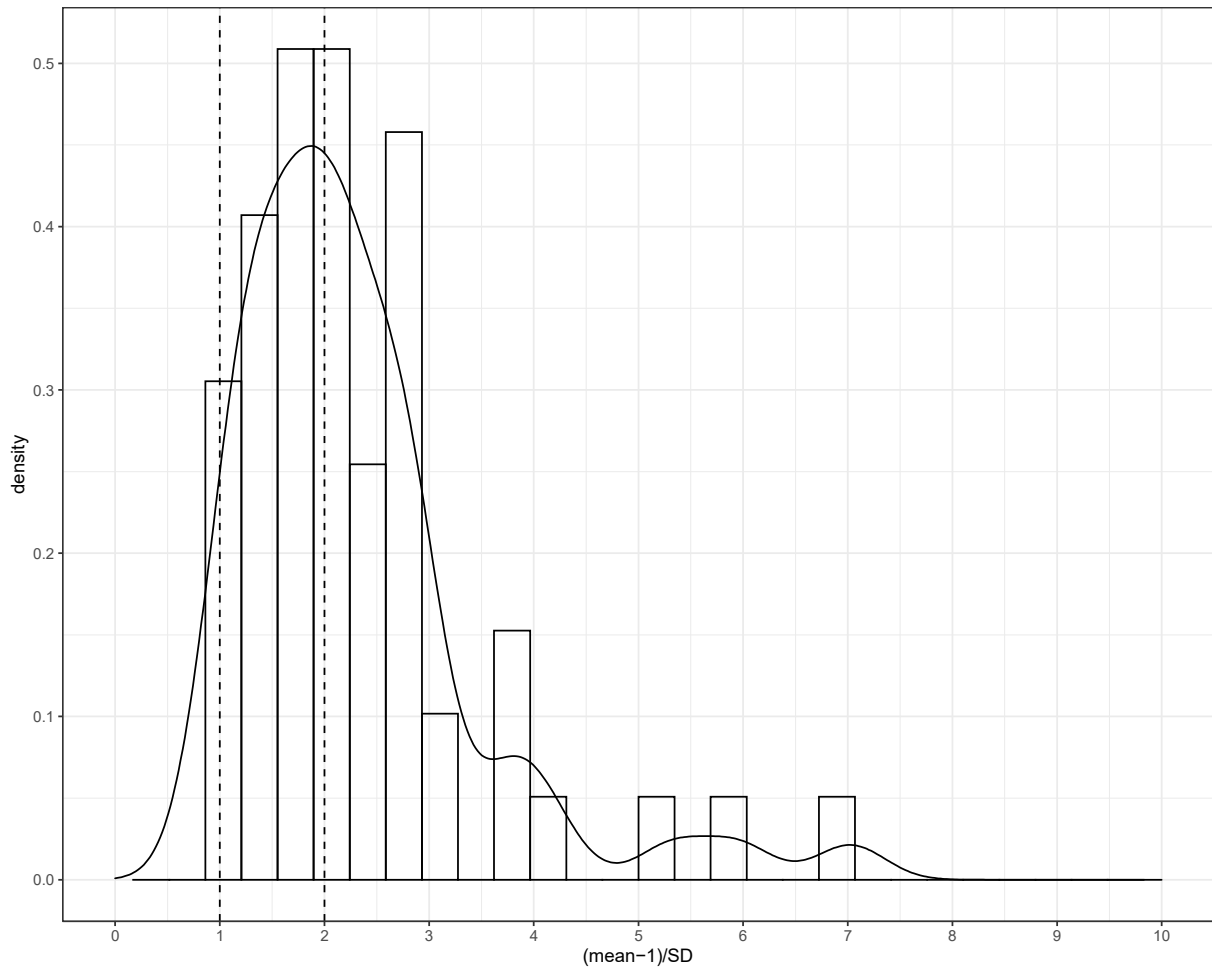


Figure-S5 Investigation of skewness of CGI-I scores



To investigate potential skewness of CGI-I scores from summary data, we followed the Cochrane Handbook and calculated the ratio of mean CGI – 1 (the minimum score of CGI-I) divided by the standard deviation. From the 58 arms, 45 had a ratio below 2 suggesting potential skewness, and 3 had smaller than 1 indicating strong evidence of skewness. The ratio had a median of 2.1 IQR [1.59, 2.75].