

Figure S1-S2: Mean values and confidence intervals of latency (Figure S1) and amplitude (Figure S2) of main ERPs by odd ball paradigm in pwMS and HCs.

Figure S1

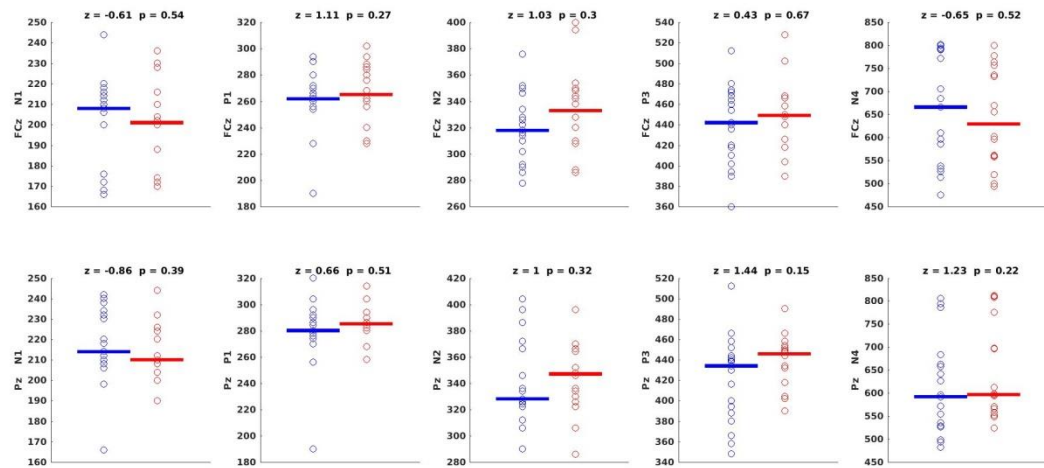


Figure S2

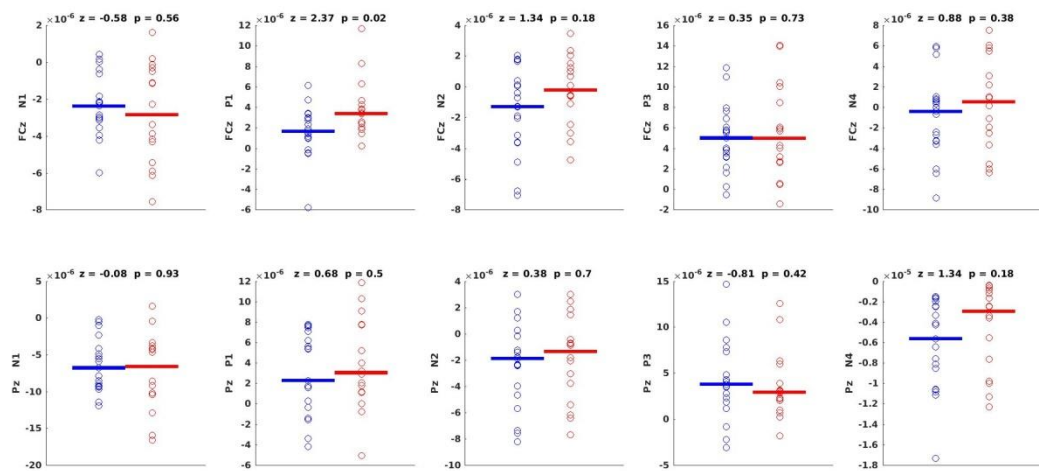
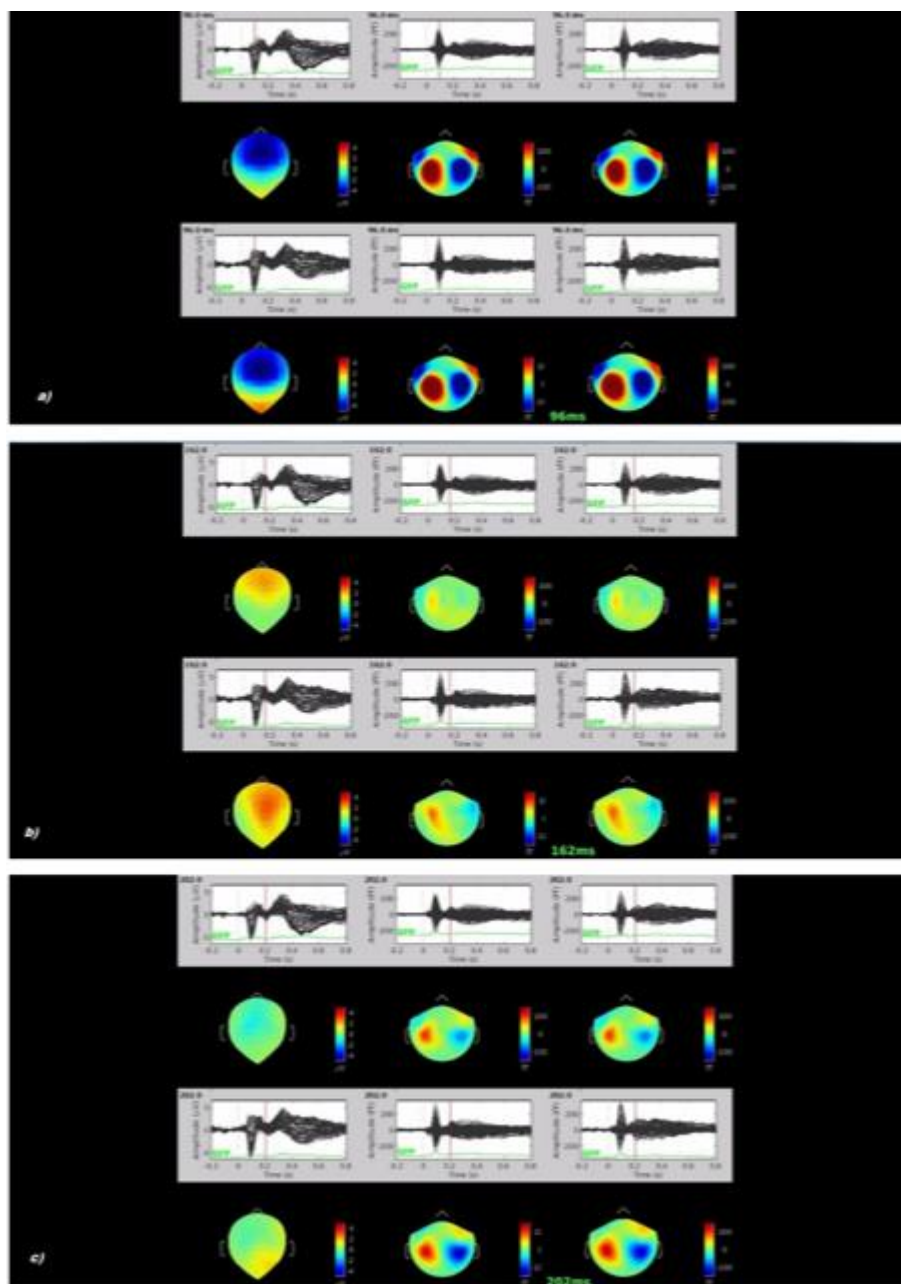
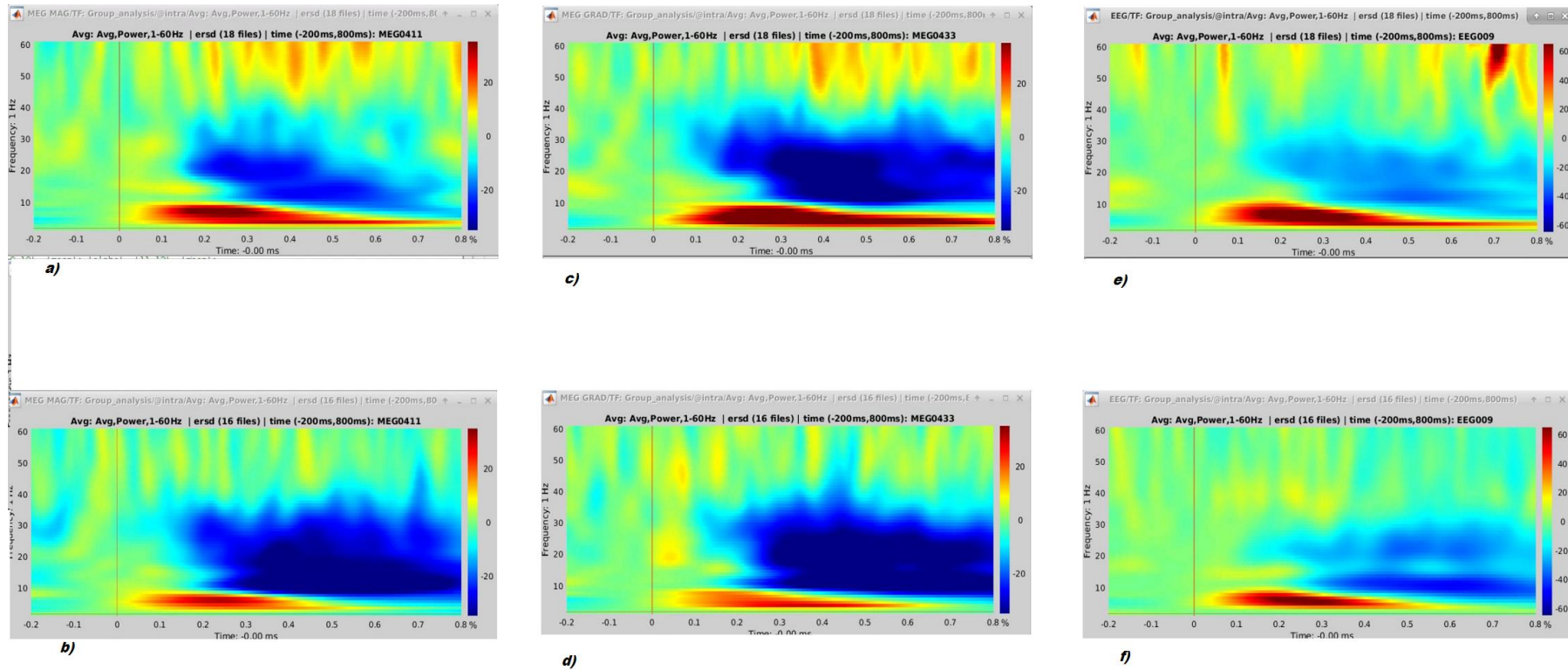


Figure S3. Topographical representation of Grand Average of ERP-ERF peaks in 16 pwMS (above) and 19 HCs (below).



From left to right: EEG-ERP, MEG-magnetometers-ERF, MEG-gradiometers-ERF. a) N1 component; b) P2 component; c) N2 component

Figure S4 Deviant trial.



Representative parietal midline gradiometer (a,b), magnetometer (c,d) and EEG derivation (e,f) for controls (top) and patients (bottom). The gradiometers showed a not significant increase of negative modulation induced by deviant stimulus in patients as compared to controls.